



Chipsmall Limited consists of a professional team with an average of over 10 year of expertise in the distribution of electronic components. Based in Hongkong, we have already established firm and mutual-benefit business relationships with customers from,Europe,America and south Asia,supplying obsolete and hard-to-find components to meet their specific needs.

With the principle of “Quality Parts,Customers Priority,Honest Operation,and Considerate Service”,our business mainly focus on the distribution of electronic components. Line cards we deal with include Microchip,ALPS,ROHM,Xilinx,Pulse,ON,Everlight and Freescale. Main products comprise IC,Modules,Potentiometer,IC Socket,Relay,Connector.Our parts cover such applications as commercial,industrial, and automotives areas.

We are looking forward to setting up business relationship with you and hope to provide you with the best service and solution. Let us make a better world for our industry!



## Contact us

Tel: +86-755-8981 8866 Fax: +86-755-8427 6832

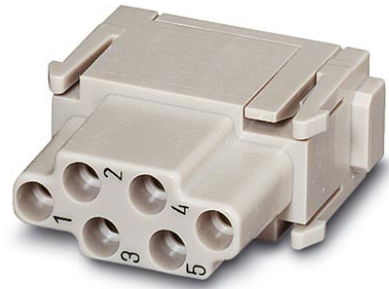
Email & Skype: info@chipsmall.com Web: www.chipsmall.com

Address: A1208, Overseas Decoration Building, #122 Zhenhua RD., Futian, Shenzhen, China




# HC-M-06-MOD-BU

Order No.: 1663462

<http://eshop.phoenixcontact.de/phoenix/treeViewClick.do?UID=1663462>

HEAVYCON contact insert module, female, 6-pos., crimp connection

**Commercial data**

|                          |  |
|--------------------------|--|
| GTIN (EAN)               | <br>4 017918 123277 |
| sales group              | D042   |
| Pack                     | 2 pcs.   |
| Customs tariff           | 85369010   |
| Catalog page information | Page 456 (PC-2009)   |

**Product notes**WEEE/RoHS-compliant since:  
04/27/2006

<http://www.download.phoenixcontact.com>  
Please note that the data given here has been taken from the online catalog. For comprehensive information and data, please refer to the user documentation. The General Terms and Conditions of Use apply to Internet downloads.

**Technical data****Electrical characteristics**

|                                 |  |
|---------------------------------|--|
| Note                            | For housing HC-B6 to B48, for housing HC-ADVANCE-B6 to B24, hinged retaining frame HC-M-MHR... necessary, crimp contacts CK2,5-ED... (crimp contacts not in scope of supply) |
| Rated voltage (III/3)           | 500 V  |
| Rated current                   | 16 A   |
| Rated surge voltage             | 6 kV   |
| Ambient temperature (operation) | -40 °C ... 125 °C  |
| Number of positions             | 6  |

**Mechanical characteristics**

|   |   |
|---|---|
| Conductor cross-section                 | 0.5 mm <sup>2</sup> ... 4 mm <sup>2</sup> |
| Connection cross-section AWG            | 20 ... 12                                 |
| Stripping length of the individual wire | 7.5 mm                                    |
| Insertion/withdrawal cycles             | ≥ 500                                     |

**General characteristics**

|                                    |  |
|------------------------------------|--|
| Number of module slots             | 1  |
| Connection method                  | Crimp connection   |
| Inflammability class acc. to UL 94 | V0   |
| Pollution degree                   | 3  |
| Surge voltage category             | III  |
| Assembly instructions              | Housing height ≥ 52 mm. Plug-in connections may only be operated only when there is no load/voltage. |

**Material data**

|                          |                       |
|--------------------------|-----------------------|
| Contact material         | Copper alloy          |
| Contact surface material | Ag (alternatively Au) |
| Contact carrier material | PC                    |

**Certificates / Approvals**



Certification

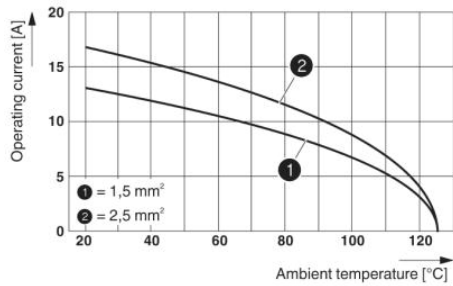
CSA, GOST, UL

**Accessories**

| Item           | Designation | Description  |
|----------------|-------------|--|
| <b>General</b> |             |  |
| 1584693        | CK2,5-ED-BB | Dummy socket for contact carrier with turned CK 1,6-ED.. female contacts |

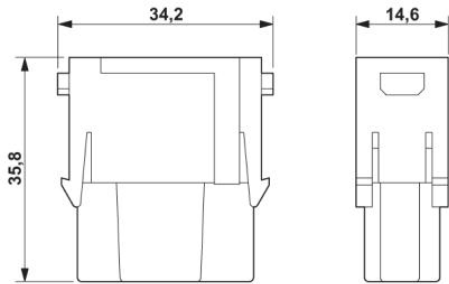
**Diagrams/Drawings**

Diagram



Derating diagram (6 modules in HC-B 24 housing)

Dimensioned drawing

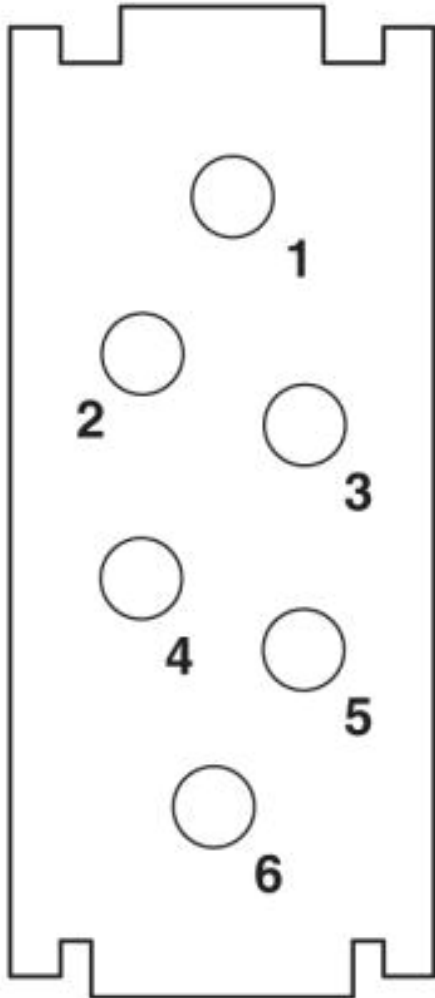


Female insert

Schematic diagram

---

Connector pin assignment, connection side



**Address**

PHOENIX CONTACT Deutschland GmbH  
Flachmarktstr. 8  
32825 Blomberg, Germany  
Phone +49 5235 3 12000  
Fax +49 5235 3 41200  
<http://www.phoenixcontact.de>



© 2010 Phoenix Contact  
Technical modifications reserved;