



Chipsmall Limited consists of a professional team with an average of over 10 year of expertise in the distribution of electronic components. Based in Hongkong, we have already established firm and mutual-benefit business relationships with customers from,Europe,America and south Asia,supplying obsolete and hard-to-find components to meet their specific needs.

With the principle of "Quality Parts,Customers Priority,Honest Operation,and Considerate Service",our business mainly focus on the distribution of electronic components. Line cards we deal with include Microchip,ALPS,ROHM,Xilinx,Pulse,ON,Everlight and Freescale. Main products comprise IC,Modules,Potentiometer,IC Socket,Relay,Connector.Our parts cover such applications as commercial,industrial, and automotives areas.

We are looking forward to setting up business relationship with you and hope to provide you with the best service and solution. Let us make a better world for our industry!



Contact us

Tel: +86-755-8981 8866 Fax: +86-755-8427 6832

Email & Skype: info@chipsmall.com Web: www.chipsmall.com

Address: A1208, Overseas Decoration Building, #122 Zhenhua RD., Futian, Shenzhen, China

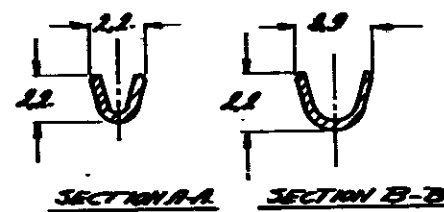
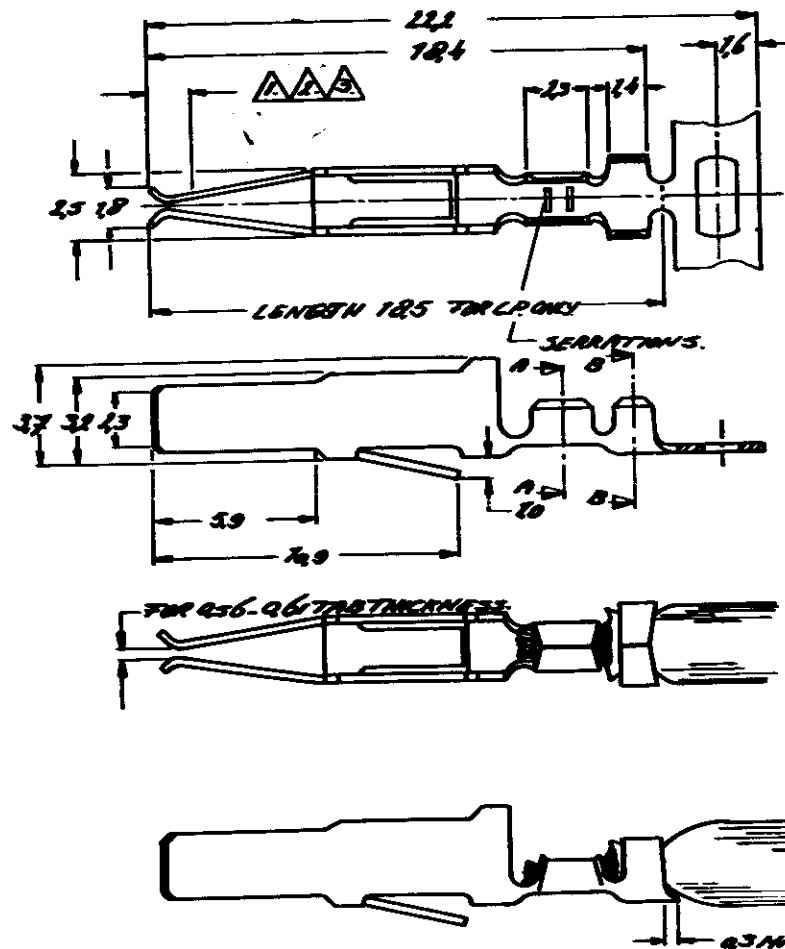
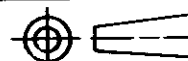


DO NOT SCALE

DIMENSIONS IN mm

METRIC

THIRD ANGLE PROJECTION



FOR REFERENCE ONLY
WILL NOT BE UP - DATED

- NOTES:**
- △ 125 μm SELECTIVE GOLD OVER 125 μm NICKEL REMAINDER 125 μm Ni
 - △ 875 μm SELECTIVE GOLD OVER 125 μm NICKEL REMAINDER 125 μm Ni
 - △ 0.4 μm SELECTIVE GOLD OVER 125 μm NICKEL REMAINDER 125 μm Ni

16632.3.	SEE NOTE A	R.H. BRONZE	166460.4.
16632.2.	SEE NOTE A	R.H. BRONZE	166460.3.
16632.1.	SEE NOTE A	R.H. BRONZE	166460.2.
LOOSE PIECE.	FINISH	MATERIAL	PART NUMBER
CUSTOMER DRAWING	AMP		AMP-HOLLAND B.V. 's-Hertogenbosch, The Netherlands
FOR REFERENCE ONLY WILL NOT BE UPDATED	THIS DRAWING IS UNPUBLISHED		RELEASED FOR PUBLICATION
	© COPYRIGHT IS ALL INTERNATIONAL RIGHTS RESERVED. AMP PRODUCTS MAY BE COVERED BY U.S. AND FOREIGN PATENTS AND/OR PATE. ITS PENDING.		BY AMP-HOLLAND B.V.
DR. <i>TR. HUISMAN 12.3.83</i>	WIRE RANGE 0.2-0.5 mm	NAME CRIMP ON / SNAP-IN	
CHK. <i>[Signature]</i>	DATE 12-3-83	TAB RECEPTACLE STRIP	
REV. <i>[Signature]</i>	SIZE AS	SHEET 1 OF 1	DRAWING NO C-166460-E
			REV. DATE D M Y 11 05 83
			REV. LTR. C

8 7 6 5 4 3 2 1