



Chipsmall Limited consists of a professional team with an average of over 10 year of expertise in the distribution of electronic components. Based in Hongkong, we have already established firm and mutual-benefit business relationships with customers from,Europe,America and south Asia,supplying obsolete and hard-to-find components to meet their specific needs.

With the principle of “Quality Parts,Customers Priority,Honest Operation,and Considerate Service”,our business mainly focus on the distribution of electronic components. Line cards we deal with include Microchip,ALPS,ROHM,Xilinx,Pulse,ON,Everlight and Freescale. Main products comprise IC,Modules,Potentiometer,IC Socket,Relay,Connector.Our parts cover such applications as commercial,industrial, and automotives areas.

We are looking forward to setting up business relationship with you and hope to provide you with the best service and solution. Let us make a better world for our industry!



Contact us

Tel: +86-755-8981 8866 Fax: +86-755-8427 6832

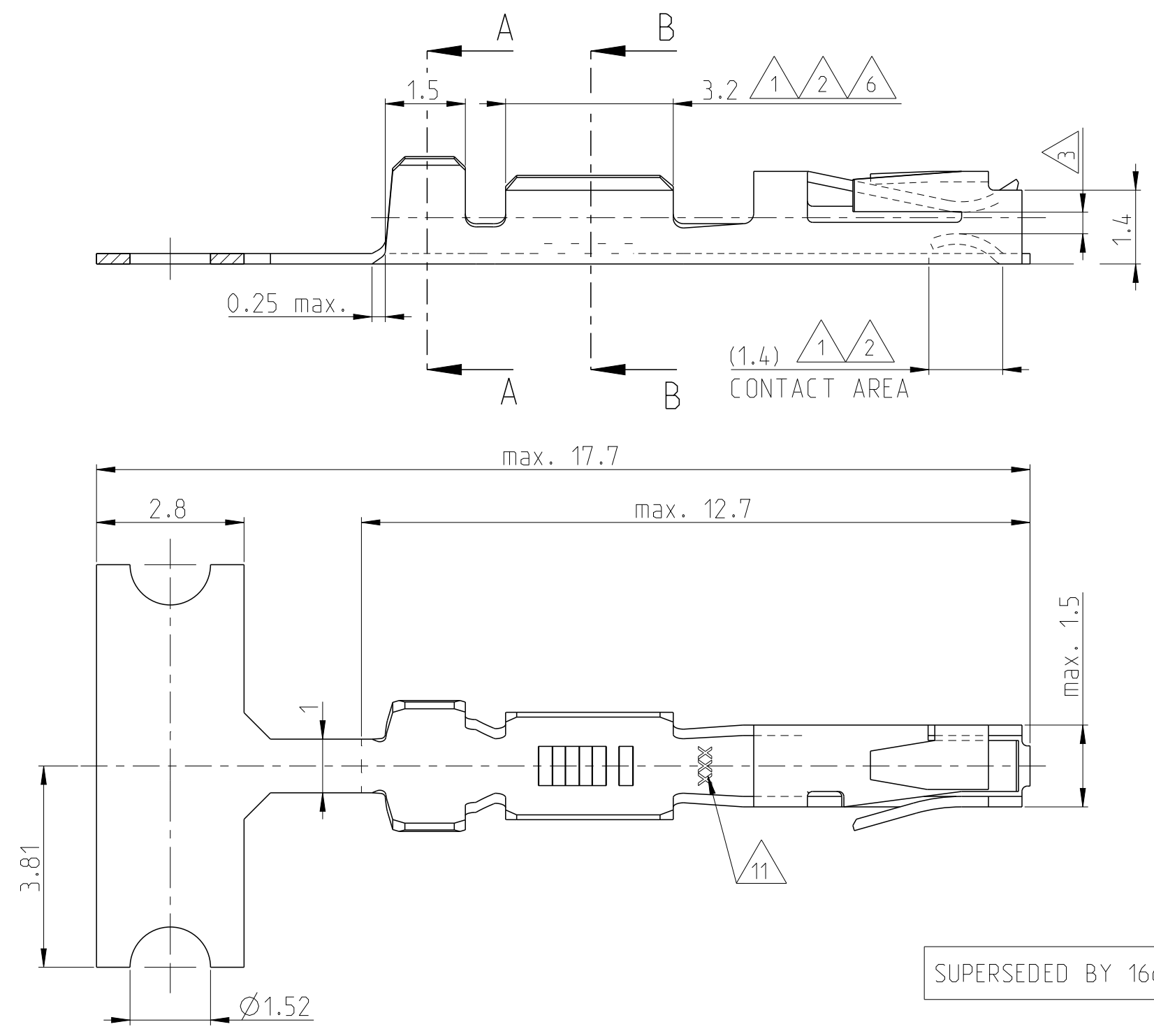
Email & Skype: info@chipsmall.com Web: www.chipsmall.com

Address: A1208, Overseas Decoration Building, #122 Zhenhua RD., Futian, Shenzhen, China



THIS DRAWING IS UNPUBLISHED. RELEASED FOR PUBLICATION 20
 © COPYRIGHT - BY - ALL RIGHTS RESERVED.

REVISIONS					
P	LTR	DESCRIPTION	DATE	DWN	APVD
	Z1	REVISED PER ECO-11-005150	21MAR2011	RK	HMR
	Z2	NEW DRAWING CREATED IN CREO	26JUNE2014	JBHJ	BRUN
	Z3	NOTE 8 MODIFIED	18NOV2015	MAH.	BRUN
	Z4	TOLERANCES ADDED AT SECTION A-A AND B-B	21JAN2016	MAH.	BRUN

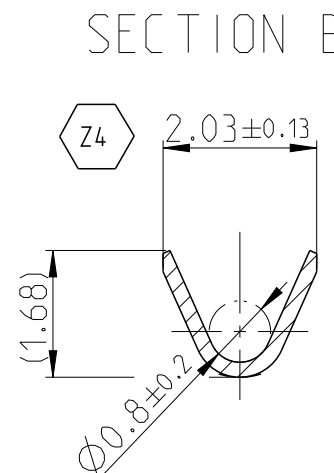
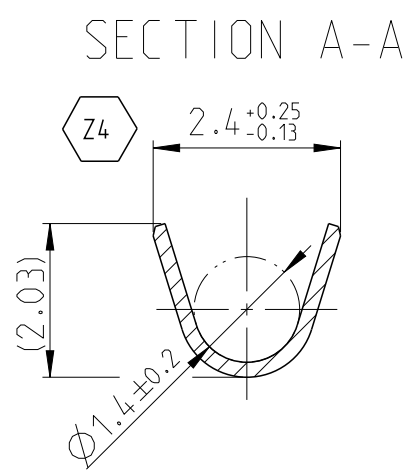


- NOTES:
- 1 UNDERCOATING: 0.8 µm NICKEL OVERALL
CONTACT AREA: 0.8 µm GOLD
CRIMP AREA: GOLDFLASH
 - 2 UNDERCOATING: 0.8 µm NICKEL OVERALL
CONTACT AREA: 1.25 µm GOLD
CRIMP AREA: GOLDFLASH
 - 3 SUITABLE FOR 0.64x0.64 POST
 - 6 UNDERCOATING: 0.8 µm NICKEL OVERALL
CONTACT AREA: 0.4 µm GOLD
CRIMP AREA: GOLDFLASH
 - 7 ADVANCED PROD. NRS. FOR DIN 41612 PART 5 SPEC
 - 8 PLATING: 2.0 µm TIN OVER MIN. 0.5 µm Ni OVERALL
 - 9 REVERSE REELED FOR USE WITH MINI APPLICATOR.
 - 10 STANDARD REELED FOR USE WITH STANDARD APPLICATOR.
 - 11 TRADE MARK.

WIRE RANGE:
20-24 (26) AWG
INSULATION RANGE:
1.40 MAX DIA.

SUPERSEDED BY 166500-2

166722-1	1	PHOSPHORBRONZE	1-166500-2	10	Z
166722-6	8		1-166500-1	10	Z
166722-6	8		166500-9	9	Z
166722-4	6		166500-7	9	W
166722-2	2		166500-4	9	Z
166722-1	1		166500-2	9	Z
LOOSE PIECE NUMBER	PLATING		MATERIAL	STRIPNUMBER	REV



THIS DRAWING IS A CONTROLLED DOCUMENT.

DWN	M.Pfeilschiffer	18JUL2000
CHK	V.Huhn	18JUL2000
APVD	-	-
PRODUCT SPEC	-	-
APPLICATION SPEC	-	-
WEIGHT	-	-
CUSTOMER DRAWING	-	-

DIMENSIONS:	TOLERANCES UNLESS OTHERWISE SPECIFIED:
mm	n. ISO 8015 n. ISO 2768-mH
	0 PLC ±0.2
	1 PLC ±0.2
	2 PLC ±0.2
	3 PLC ±0.2
	4 PLC ±0.2
ANGLES	±1°
MATERIAL	FINISH
-	-
-	-

DWN M.Pfeilschiffer 18JUL2000
 CHK V.Huhn 18JUL2000
 APVD -
 PRODUCT SPEC -
 APPLICATION SPEC -
 WEIGHT -

STE TE Connectivity

NAME STANDARD TANDEM SPRING RECEPTACLE

SIZE	CAGE CODE	DRAWING NO	RESTRICTED TO
A3	00779	166500	-

SCALE 10:1 SHEET 1 OF 1 REV Z4