



Chipsmall Limited consists of a professional team with an average of over 10 year of expertise in the distribution of electronic components. Based in Hongkong, we have already established firm and mutual-benefit business relationships with customers from,Europe,America and south Asia,supplying obsolete and hard-to-find components to meet their specific needs.

With the principle of “Quality Parts,Customers Priority,Honest Operation,and Considerate Service”,our business mainly focus on the distribution of electronic components. Line cards we deal with include Microchip,ALPS,ROHM,Xilinx,Pulse,ON,Everlight and Freescale. Main products comprise IC,Modules,Potentiometer,IC Socket,Relay,Connector.Our parts cover such applications as commercial,industrial, and automotives areas.

We are looking forward to setting up business relationship with you and hope to provide you with the best service and solution. Let us make a better world for our industry!



Contact us

Tel: +86-755-8981 8866 Fax: +86-755-8427 6832

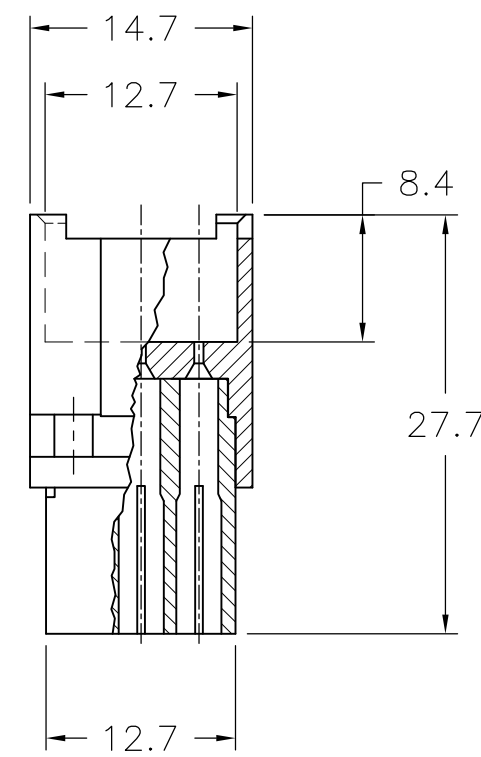
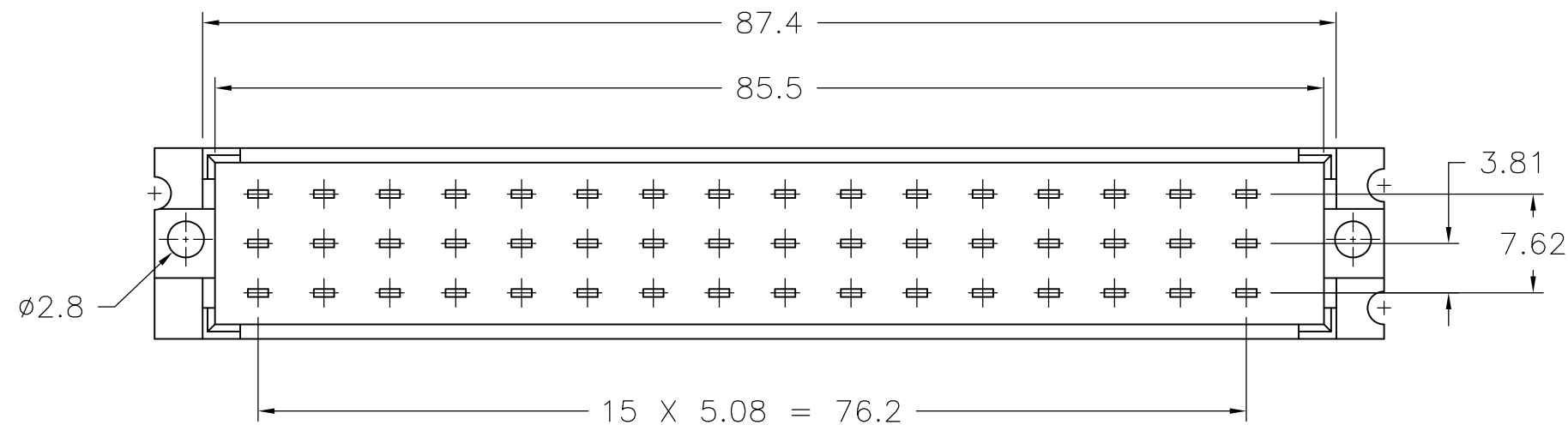
Email & Skype: info@chipsmall.com Web: www.chipsmall.com

Address: A1208, Overseas Decoration Building, #122 Zhenhua RD., Futian, Shenzhen, China

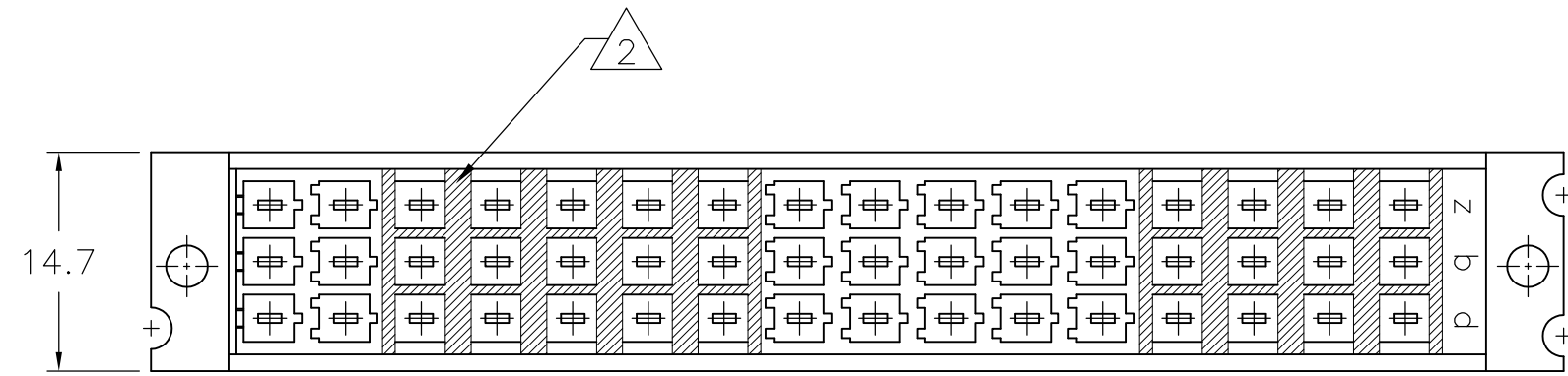
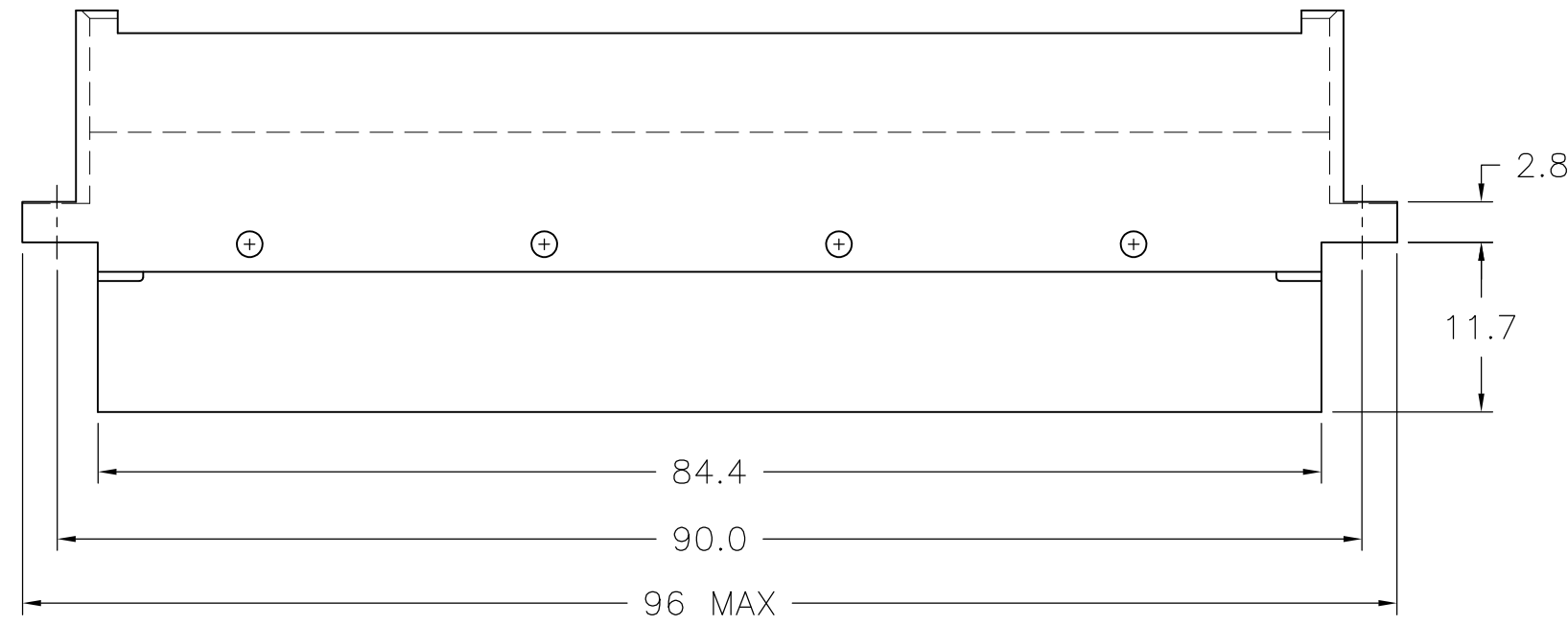


THIS DRAWING IS UNPUBLISHED. RELEASED FOR PUBLICATION
 © COPYRIGHT - By - ALL RIGHTS RESERVED.

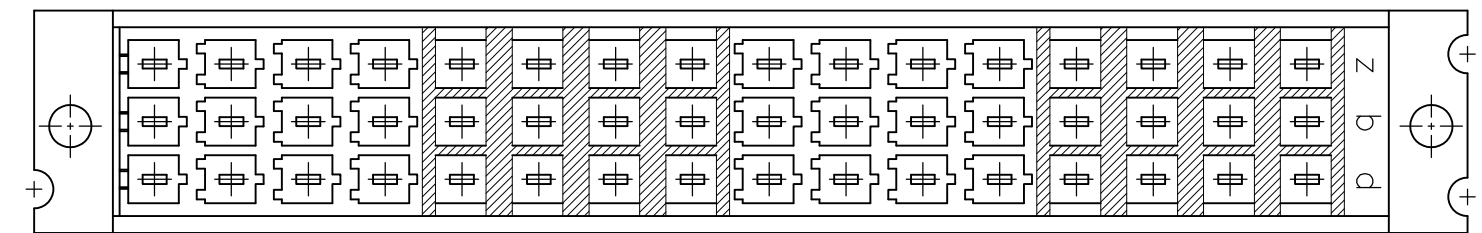
LOC		DIST		REVISIONS			
P	LTR	DESCRIPTION		DATE	DWN	APVD	
AD	00	D2	REDRAWN & REV PER ECO-12-018940		16JAN2013	BC	RP



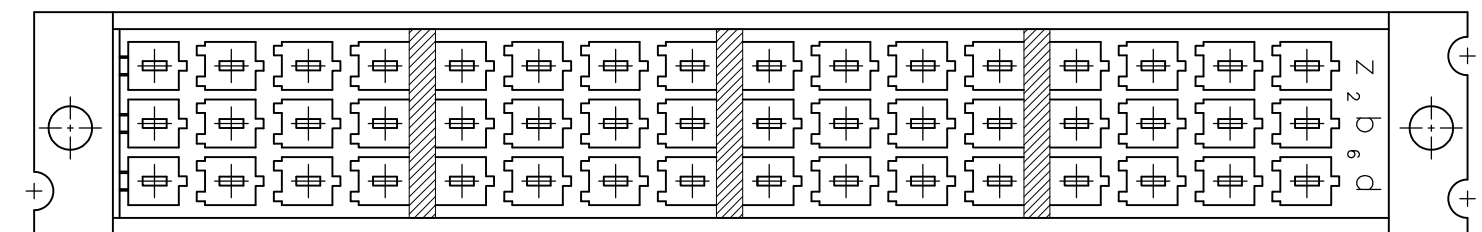
- 1 MATERIAL: 20% GLASS FILLED NORYL, COLOR: GREY RAL 7032.
- 2 BLOCK MARKING AND CAVITY NUMBERS PRINTED IN GREEN COLOR.



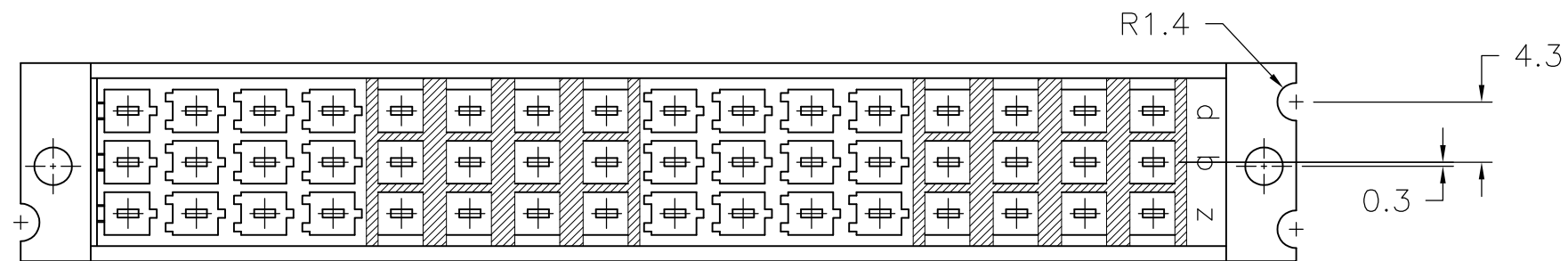
STYLE 3 FURTHER EQUAL TO 4



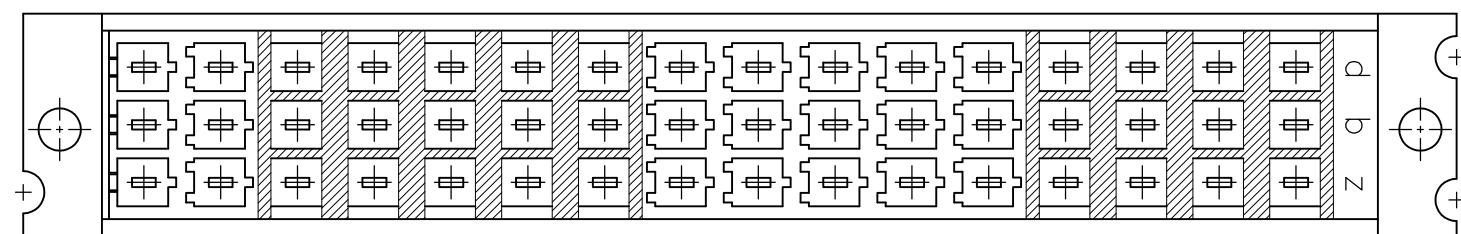
STYLE 4



STYLE 5



STYLE 2



STYLE 1

	5	1-166570-0
OBSOLETE	4	166570-9
	3	166570-8
OBSOLETE	1	166570-7
	2	166570-1
	STYLE	PART NUMBER

THIS DRAWING IS A CONTROLLED DOCUMENT.		DWN	B.CARBO	16JAN2013	 TE Connectivity
DIMENSIONS: mm		CHK	R.PATTERSON	16JAN2013	
TOLERANCES UNLESS OTHERWISE SPECIFIED:		APVD	R.PATTERSON	16JAN2013	
0 PLC ± - 1 PLC ± - 2 PLC ± .02 3 PLC ± .005 4 PLC ± .0005 ANGLES ± - FINISH -		PRODUCT SPEC	NAME		
MATERIAL 1		APPLICATION SPEC	NAME		48 POS, MALE CONN ASSY, FOR COSI CONTACTS, ACC. DIN 41612
		WEIGHT	-	SIZE	A2
		CUSTOMER DRAWING	SCALE	2:1	SHEET 1 of 1
				CAGE CODE	00779
				DRAWING NO	C=166570
				RESTRICTED TO	-
				REV	D2