



Chipsmall Limited consists of a professional team with an average of over 10 year of expertise in the distribution of electronic components. Based in Hongkong, we have already established firm and mutual-benefit business relationships with customers from,Europe,America and south Asia,supplying obsolete and hard-to-find components to meet their specific needs.

With the principle of “Quality Parts,Customers Priority,Honest Operation,and Considerate Service”,our business mainly focus on the distribution of electronic components. Line cards we deal with include Microchip,ALPS,ROHM,Xilinx,Pulse,ON,Everlight and Freescale. Main products comprise IC,Modules,Potentiometer,IC Socket,Relay,Connector.Our parts cover such applications as commercial,industrial, and automotives areas.

We are looking forward to setting up business relationship with you and hope to provide you with the best service and solution. Let us make a better world for our industry!



## Contact us

Tel: +86-755-8981 8866 Fax: +86-755-8427 6832

Email & Skype: info@chipsmall.com Web: www.chipsmall.com

Address: A1208, Overseas Decoration Building, #122 Zhenhua RD., Futian, Shenzhen, China



# Low Voltage/Filament - Economical Single Primary 166 Series

## Series

### Open Style, Chassis Mount - 115 V Primary

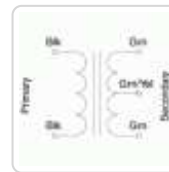
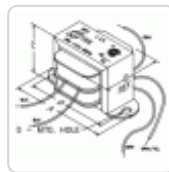
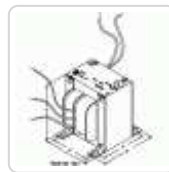


### Features

- Economical single primary 115 VAC, 60 Hz. (or 117 50/60 Hz. see table) - (If you require 117/234 or 50/60 Hz. operation or dual secondaries check out our versatile **266 Series**.)
- Most secondaries are center tapped (C.T.), VAC (RMS) - see table for details.
- Open style, channel bracket, two hole chassis mount.
- Minimum 6" long leads.
- Dual bobbin design - no electrostatic shield required.
- We use Class B insulation (130 degrees, C) for extra protection - UL listed as a Class A (105 degree, C) design
- Hi-Pot test of 2,000V RMS.
- UL listed.
- CSA certified.



### Gallery



Part No.	VA	Primary (VAC)	Secondary (R.M.S.)		Overall Dimensions					Mounting Dimensions	Ref
			VAC	Amps	A	B	C	D	E		
166S2	25	115V 60 Hz.	2.5 C.T.	10	3.69	2.00	2.31	3.13	0.19	C	
166F2	0.63	115V 60 Hz.	2.5 C.T.	0.25	2.06	1.25	1.19	1.75	0.19	C	
166G2	1.25	115V 60 Hz.	2.5 C.T.	0.5	2.06	1.25	1.19	1.75	0.19	C	
166J2	2.5	115V 60 Hz.	2.5 C.T.	1	2.06	1.38	1.19	1.75	0.19	C	
166K2	3.75	115V 60 Hz.	2.5 C.T.	1.5	2.38	1.38	1.38	2.00	0.19	C	
166L2	6.25	115V 60 Hz.	2.5 C.T.	2.5	2.81	1.50	1.69	2.38	0.19	C	
166M2	7.5	115V 60 Hz.	2.5 C.T.	3	2.81	1.50	1.69	2.38	0.19	C	
166Q2	15	115V 60 Hz.	2.5 C.T.	6	3.25	1.63	2.00	2.81	0.19	C	
166R5	40	115V 60 Hz.	5 C.T.	8	3.69	2.00	2.31	3.13	0.19	C	
166S5	50	115V 60 Hz.	5 C.T.	10	3.69	2.13	2.31	3.13	0.19	C	
166U5	75	115V 60 Hz.	5 C.T.	15	4.03	2.25	2.63	3.56	0.19	C	
166RS	40	115V 60 Hz.	5 C.T.	8	4.50	2.50	3.00	4.00	0.20	C	
166V5	100	115V 60 Hz.	5 C.T.	20	4.50	2.50	3.00	4.00	0.20	C	
166F5	1.25	115V 60 Hz.	5 C.T.	0.25	2.06	1.25	1.19	1.75	0.19	C	
166G5	2.5	115V 60 Hz.	5 C.T.	0.5	2.06	1.38	1.19	1.75	0.19	C	
166J5	5	115V 60 Hz.	5 C.T.	1	2.38	1.50	1.38	2.00	0.19	C	
166L5	10	115V 60 Hz.	5 C.T.	2	2.81	1.63	1.69	2.38	0.19	C	

Part No.	VA	Primary	Secondary (R.M.S.)		Overall Dimensions					Mounting	
		(VAC)	VAC	Amps	A	B	C	D	E	Dimensions	Ref
166MS	15	115V 60 Hz.	5 C.T.	3	3.25	1.75	2.00	2.81	0.19	C	
166M6	18.9	117V 50/60 Hz.	6.3 C.T.	3	3.25	2.00	2.00	2.81	0.19	C	
166Q6	37.8	115V 60 Hz.	6.3 C.T.	6	3.69	2.00	2.31	3.13	0.19	C	
166S6	63	115V 60 Hz.	6.3 C.T.	10	4.03	2.25	2.63	3.56	0.19	C	
166E6	0.95	115V 60 Hz.	6.3 C.T.	0.15	2.06	1.25	1.19	1.75	0.19	C	
166F6	1.89	115V 60 Hz.	6.3 C.T.	0.3	2.06	1.38	1.19	1.75	0.19	C	
166G6	3.78	115V 60 Hz.	6.3 C.T.	0.6	2.38	1.38	1.38	2.00	0.19	C	
166G6B	3.78	117V 50/60 Hz.	6.3 C.T.	0.6	2.38	1.38	1.38	2.00	0.19	C	
166J6	6.3	115V 60 Hz.	6.3 C.T.	1	2.81	1.50	1.69	2.38	0.19	C	
166K6	7.56	115V 60 Hz.	6.3 C.T.	1.2	2.81	1.50	1.69	2.38	0.19	C	
166K6B	7.56	117V 50/60 Hz.	6.3 C.T.	1.2	2.81	1.50	1.69	2.38	0.19	C	
166L6	12.6	115V 60 Hz.	6.3 C.T.	2	2.81	1.63	1.69	2.38	0.19	C	
166N6	25.2	115V 60 Hz.	6.3 C.T.	4	3.25	1.75	2.00	2.81	0.19	C	
166G7	4.9	115V 60 Hz.	7 C.T.	0.7	2.38	1.50	1.38	2.00	0.19	C	
166U7	112.5	115V 60 Hz.	7.5 C.T.	15	4.50	2.50	3.00	4.00	0.20	C	
166G8	4	115V 60 Hz.	8 C.T.	0.5	2.38	1.38	1.38	2.00	0.19	C	
166N8	34	115V 60 Hz.	8.5 C.T.	4	3.25	2.00	2.00	2.81	0.19	C	
166J8	8.5	115V 60 Hz.	8.5 C.T.	1	2.81	1.50	1.69	2.38	0.19	C	
166L8	17	115V 60 Hz.	8.5 C.T.	2	3.25	1.63	2.00	2.81	0.19	C	
166M8	25.5	115V 60 Hz.	8.5 C.T.	3	3.25	1.75	2.00	2.81	0.19	C	
166G9	4.5	115V 60 Hz.	9 C.T.	0.5	2.38	1.38	1.38	2.00	0.19	C	
166M10	30	115V 60 Hz.	10 C.T.	3	3.25	2.00	2.00	2.81	0.19	C	
166N10	40	115V 60 Hz.	10 C.T.	4	3.69	2.00	2.31	3.13	0.19	C	
166P10	50	115V 60 Hz.	10 C.T.	5	3.69	2.13	2.31	3.13	0.19	C	
166R10	80	115V 60 Hz.	10 C.T.	8	4.03	2.50	2.63	3.56	0.19	C	
166S10	100	115V 60 Hz.	10 C.T.	10	4.50	2.50	3.00	4.00	0.20	C	
166F10	3	115V 60 Hz.	10 C.T.	0.3	2.06	1.38	1.19	1.75	0.19	C	
166G10	5	115V 60 Hz.	10 C.T.	0.5	2.38	1.50	1.38	2.00	0.19	C	
166J10	10	115V 60 Hz.	10 C.T.	1	2.81	1.63	1.69	2.38	0.19	C	
166L10	20	115V 60 Hz.	10 C.T.	2	3.25	1.75	2.00	2.81	0.19	C	
166P11	55	115V 60 Hz.	11 C.T.	5	3.69	2.13	2.31	3.13	0.19	C	
166S11	110	115V 60 Hz.	11 C.T.	10	4.50	2.50	3.00	4.00	0.20	C	
166C12	0.63	115V 60 Hz.	6.3/12.6 C.T.	.1/0.05	2.06	1.25	1.19	1.75	0.19	C	
166N12B	48	117V 50/60 Hz.	12 C.T.	4	3.69	2.00	2.31	3.13	0.19	C	
166E12	1.8	115V 60 Hz.	12 C.T.	0.15	2.06	1.38	1.19	1.75	0.19	C	
166F12B	3.6	115V 60 Hz.	12 C.T.	0.3	2.38	1.38	1.38	2.00	0.19	C	
166F12C	4.2	115V 60 Hz.	12 C.T.	0.35	2.38	1.38	1.38	2.00	0.19	C	
166F12D	4.2	117V 50/60 Hz.	12	0.35	2.38	1.38	1.38	2.00	0.19	C	
166GD12	8.4	117V 50/60 Hz.	12	0.7	2.81	1.63	1.69	2.38	0.19	C	
166JA12	12	115V 60 Hz.	12 C.T.	1	2.81	1.63	1.69	2.38	0.19	C	
166K12	14.4	115V 60 Hz.	12 C.T.	1.2	3.25	1.63	2.00	2.81	0.19	C	
166JB12	14.4	117V 50/60 Hz.	12	1.2	3.25	1.75	2.00	2.81	0.19	C	
166LA12	24	115V 60 Hz.	12 C.T.	2	3.25	1.75	2.00	2.81	0.19	C	
166K12B	18.9	117V 50/60 Hz.	12.6 C.T.	1.5	3.25	2.00	2.00	2.81	0.19	C	
166L12B	25.2	117V 50/60 Hz.	12.6 C.T.	2	3.25	2.00	2.00	2.81	0.19	C	
166L12	31.5	115V 60 Hz.	12.6 C.T.	2.5	3.25	2.00	2.00	2.81	0.19	C	
166M12	37.8	117V 50/60 Hz.	12.6 C.T.	3	3.69	2.13	2.31	3.13	0.19	C	
166N12	50.4	115V 60 Hz.	12.6 C.T.	4	3.69	2.13	2.31	3.13	0.19	C	
166Q12	75.6	115V 60 Hz.	12.6 C.T.	6	4.03	2.25	2.63	3.56	0.19	C	
166R12	100.8	115V 60 Hz.	12.6 C.T.	8	4.50	2.50	3.00	4.00	0.20	C	
166F12	3.78	115V 60 Hz.	12.6 C.T.	0.3	2.38	1.38	1.38	2.00	0.19	C	
166G12	6.3	115V 60 Hz.	12.6 C.T.	0.5	2.81	1.50	1.69	2.38	0.19	C	
166J12	12.6	115V 60 Hz.	12.6 C.T.	1	2.81	1.63	1.69	2.38	0.19	C	



Part No.	VA	Primary	Secondary (R.M.S.)		Overall Dimensions					Mounting		Ref
		(VAC)	VAC	Amps	A	B	C	D	E	Dimensions		
166J12B	12.6	117V 50/60 Hz.	12.6 C.T.	1	3.25	1.75	2.00	2.81		0.19		C
166L14	28	115V 60 Hz.	14 C.T.	2	3.25	2.00	2.00	2.81		0.19		C
166Q14	84	115V 60 Hz.	14 C.T.	6	4.03	2.50	2.63	3.56		0.19		C
166F14	3.5	115V 50/60 Hz.	14 C.T.	0.25	2.38	1.35	1.43	2.00		0.19		C
166E14	2.1	115V 60 Hz.	14 C.T.	0.15	2.06	1.38	1.19	1.75		0.19		C
166G14	7	115V 60 Hz.	14 C.T.	0.5	2.81	1.50	1.69	2.38		0.19		C
166J14	14	115V 60 Hz.	14 C.T.	1	2.81	1.63	1.69	2.38		0.19		C
166L16	35.2	115V 60 Hz.	16 C.T.	2.2	3.25	2.00	2.00	2.81		0.19		C
166M16	48	115V 60 Hz.	16 C.T.	3	3.69	2.13	2.31	3.13		0.19		C
166F16	4	115V 60 Hz.	16 C.T.	0.25	2.38	1.38	1.38	2.00		0.19		C
166G16	8	115V 60 Hz.	16 C.T.	0.5	2.81	1.50	1.69	2.38		0.19		C
166J16	16	115V 60 Hz.	16 C.T.	1	3.25	1.63	2.00	2.81		0.19		C
166B18	0.54	115V 60 Hz.	9/18 C.T.	.06/.03	2.06	1.25	1.19	1.75		0.19		C
166J18	18	115V 50/60 Hz.	18 C.T.	1	3.25	2.00	2.00	2.81		0.19		C
166L18	36	115V 50/60 Hz.	18 C.T.	2	3.69	2.13	2.31	3.13		0.19		C
166M18	54	115V 60 Hz.	18 C.T.	3	3.69	2.13	2.31	3.13		0.19		C
166P18	90	115V 60 Hz.	18 C.T.	5	4.03	2.50	2.63	3.56		0.19		C
166E18	5.4	115V 60 Hz.	18 C.T.	0.3	2.38	1.50	1.38	2.00		0.19		C
166K18	27	115V 60 Hz.	18 C.T.	1.5	3.25	1.75	2.00	2.81		0.19		C
166L20	40	115V 60 Hz.	20 C.T.	2	3.69	1.88	2.31	3.13		0.19		C
166D20	2	115V 60 Hz.	20 C.T.	0.1	2.06	1.38	1.19	1.75		0.19		C
166E20	3	115V 60 Hz.	20 C.T.	0.15	2.06	1.38	1.19	1.75		0.19		C
166F20	6	115V 60 Hz.	20 C.T.	0.3	2.38	1.50	1.38	2.00		0.19		C
166G20	10	115V 60 Hz.	20 C.T.	0.5	2.81	1.63	1.69	2.38		0.19		C
166J20	20	115V 60 Hz.	20 C.T.	1	3.25	1.75	2.00	2.81		0.19		C
166L22	44	115V 60 Hz.	22 C.T.	2	3.69	2.13	2.31	3.13		0.19		C
166A24	0.63	115V 60 Hz.	12.6/25.2 C.T.	.05/.025	2.06	1.25	1.19	1.75		0.19		C
166T24	288	117V 50/60 Hz.	24 C.T.	12	3.75	3.60	4.63	3.00	3.00	0.20	0.38	B
166J24	24	117V 50/60 Hz.	24	1	3.25	2.00	2.00	2.81		0.19		C
166L24	48	115V 60 Hz.	24 C.T.	2	3.69	2.13	2.31	3.13		0.19		C
166M24	72	115V 60 Hz.	24 C.T.	3	4.03	2.25	2.63	3.56		0.19		C
166N24	96	115V 60 Hz.	24 C.T.	4	4.50	2.50	3.00	4.00		0.20		C
166C24	2.04	115V 60 Hz.	24 C.T.	0.085	2.06	1.38	1.19	1.75		0.19		C
166EA24	4.8	115V 60 Hz.	24 C.T.	0.2	2.38	1.50	1.38	2.00		0.19		C
166FB24	9.6	117V 50/60 Hz.	24 C.T.	0.4	2.81	1.63	1.69	2.38		0.19		C
166GD24B	16.8	117V 50/60 Hz.	24 C.T.	0.7	3.25	1.75	2.00	2.81		0.19		C
166JB24	24	115V 60 Hz.	24 C.T.	1	3.25	1.75	2.00	2.81		0.19		C
166J25B	25	117V 50/60 Hz.	25 C.T.	1	3.25	2.00	2.00	2.81		0.19		C
166K25	37.5	115V 60 Hz.	25 C.T.	1.5	3.69	1.88	2.31	3.13		0.19		C
166L25	50	115V 60 Hz.	25 C.T.	2	3.69	2.13	2.31	3.13		0.19		C
166M25	75	115V 60 Hz.	25 C.T.	3	4.03	2.25	2.63	3.56		0.19		C
166D25	2.5	115V 60 Hz.	25 C.T.	0.1	2.06	1.38	1.19	1.75		0.19		C
166E25	3.75	115V 60 Hz.	25 C.T.	0.15	2.38	1.38	1.38	2.00		0.19		C
166F25	7.5	115V 60 Hz.	25 C.T.	0.3	2.81	1.50	1.69	2.38		0.19		C
166G25	12.5	115V 60 Hz.	25 C.T.	0.5	2.81	1.63	1.69	2.38		0.19		C
166J25C	25	117V 50/60 Hz.	25	1	3.25	2.00	2.00	2.38		0.19		C
166J25	25	115V 60 Hz.	25 C.T.	1	3.25	1.75	2.00	2.81		0.19		C
166L25B	50.4	115V 50/60 Hz.	25.2 C.T.	2	4.03	2.25	2.63	3.56		0.19		C
166J28	28	115V 60 Hz.	28 C.T.	1	3.25	2.00	2.00	2.81		0.19		C
166L28	56	115V 60 Hz.	28 C.T.	2	3.69	2.13	2.31	3.13		0.19		C
166F28	7	115V 60 Hz.	28 C.T.	0.25	2.81	1.50	1.69	2.38		0.19		C
166G28	14	115V 60 Hz.	28 C.T.	0.5	2.81	1.63	1.69	2.38		0.19		C
166E30	4.5	115V 60 Hz.	30 C.T.	0.15	2.38	1.38	1.38	2.00		0.19		C

Part No.	VA	Primary (VAC)	Secondary (R.M.S.)		Overall Dimensions					Mounting		Ref
			VAC	Amps	A	B	C	D	E	Dimensions		
166F30	7.5	115V 60 Hz.	30 C.T.	0.25	2.81	1.50	1.69	2.38		0.19		C
166G30	15	115V 60 Hz.	30 C.T.	0.5	3.25	1.63	2.00	2.81		0.19		C
166J33	33	115V 60 Hz.	33 C.T.	1	3.25	2.00	2.00	2.81		0.19		C
166K35	52.5	115V 60 Hz.	35 C.T.	1.5	3.69	2.13	2.31	3.13		0.19		C
166J36	36	115V 60 Hz.	36 C.T.	1	3.69	1.88	2.31	3.13		0.19		C
166E36	5.4	115V 60 Hz.	36 C.T.	0.15	2.38	1.50	1.38	2.00		0.19		C
166F36	10.8	115V 60 Hz.	36 C.T.	0.3	2.81	1.63	1.69	2.38		0.19		C
166F36A	10.8	117V 50/60 Hz.	36 C.T.	0.3	2.81	1.63	1.69	2.38		0.19		C
166G36	18	115V 60 Hz.	36 C.T.	0.5	3.25	1.63	2.00	2.81		0.19		C
166L42	84	115V 60 Hz.	42 C.T.	2	4.03	2.50	2.63	3.56		0.19		C
166J44	44	115V 60 Hz.	44 C.T.	1	3.69	2.00	2.31	3.13		0.19		C
166E44	6.6	115V 60 Hz.	44 C.T.	0.15	2.81	1.50	1.69	2.38		0.19		C
166F44	11	115V 60 Hz.	44 C.T.	0.25	2.81	1.63	1.69	2.38		0.19		C
166G44	22	115V 60 Hz.	44 C.T.	0.5	3.25	1.75	2.00	2.81		0.19		C
166M48	144	117V 50/60 Hz.	48 C.T.	3	3.44	2.98	4.13	2.75	2.38	0.20	0.38	B
166J50	50	115V 60 Hz.	50 C.T.	1	3.69	2.13	2.31	3.13		0.19		C
166L50	100	115V 60 Hz.	50 C.T.	2	4.50	2.50	3.00	4.00		0.20		C
166C50	3.75	115V 60 Hz.	50 C.T.	0.075	2.38	1.38	1.38	2.00		0.19		C
166F50	15	115V 60 Hz.	50 C.T.	0.3	3.25	1.63	2.00	2.81		0.19		C
166G50	25	115V 60 Hz.	50 C.T.	0.5	3.25	1.75	2.00	2.81		0.19		C
166G60	30	115V 60 Hz.	60 C.T.	0.5	3.25	2.00	2.00	2.81		0.19		C
166M72	216	117V 50/60 Hz.	72 C.T.	3	3.75	3.56	4.50	3.00	3.00	0.20	0.38	B
166G80	40	115V 60 Hz.	80 C.T.	0.5	3.69	1.88	2.31	3.13		0.19		C
166G100	50	115V 60 Hz.	100 C.T.	0.5	3.69	2.13	2.31	3.13		0.19		C
166F120	36	115V 60 Hz.	120 C.T.	0.3	3.69	1.88	2.31	3.13		0.19		C

*Data subject to change without notice*