



Chipsmall Limited consists of a professional team with an average of over 10 year of expertise in the distribution of electronic components. Based in Hongkong, we have already established firm and mutual-benefit business relationships with customers from,Europe,America and south Asia,supplying obsolete and hard-to-find components to meet their specific needs.

With the principle of “Quality Parts,Customers Priority,Honest Operation,and Considerate Service”,our business mainly focus on the distribution of electronic components. Line cards we deal with include Microchip,ALPS,ROHM,Xilinx,Pulse,ON,Everlight and Freescale. Main products comprise IC,Modules,Potentiometer,IC Socket,Relay,Connector.Our parts cover such applications as commercial,industrial, and automotives areas.

We are looking forward to setting up business relationship with you and hope to provide you with the best service and solution. Let us make a better world for our industry!



## Contact us

Tel: +86-755-8981 8866 Fax: +86-755-8427 6832

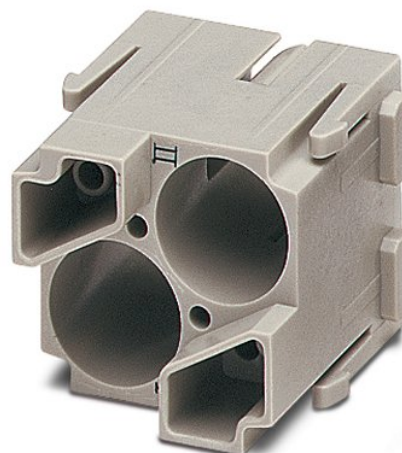
Email & Skype: info@chipsmall.com Web: www.chipsmall.com

Address: A1208, Overseas Decoration Building, #122 Zhenhua RD., Futian, Shenzhen, China




# HC-M-EMV-MOD-ST

Order No.: 1678567

<http://eshop.phoenixcontact.de/phoenix/treeViewClick.do?UID=1678567>

HEAVYCON contact insert module, series M EMV (EMC), male, 2-  
pos., for HC-M-EMV male contacts

## Commercial data

GTIN (EAN)	 4 017918 167639
sales group	D042
Pack	2 pcs.
Customs tariff	85369010
Catalog page information	Page 460 (PC-2009)

## Product notes

WEEE/RoHS-compliant since:  
11/29/2006



[http://  
www.download.phoenixcontact.com](http://www.download.phoenixcontact.com)  
Please note that the data given  
here has been taken from the  
online catalog. For comprehensive  
information and data, please refer  
to the user documentation. The  
General Terms and Conditions of  
Use apply to Internet downloads.

## Technical data

### Electrical characteristics

Note	For housing HC-B6 to B48, for housing HC-ADVANCE-B6 to B24, hinged retaining frame HC-M-MHR... necessary
Ambient temperature (operation)	-40 °C ... 125 °C

### Mechanical characteristics

Insertion/withdrawal cycles	≥ 500
-----------------------------	-------

### General characteristics

Number of module slots	2
Inflammability class acc. to UL 94	V0
Assembly instructions	Housing height ≥ 72 mm. Plug-in connections may only be operated only when there is no load/voltage.

### Material data

Contact carrier material	PC
--------------------------	----

### Certificates / Approvals

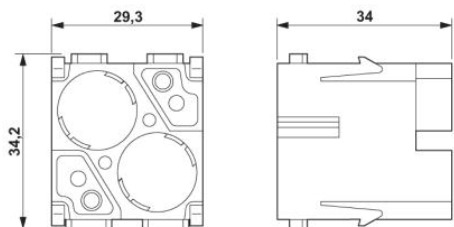


Certification

CUL, GOST, UL

### Diagrams/Drawings

Dimensioned drawing



Male insert

**Address**

PHOENIX CONTACT Deutschland GmbH  
Flachmarktstr. 8  
32825 Blomberg, Germany  
Phone +49 5235 3 12000  
Fax +49 5235 3 41200  
<http://www.phoenixcontact.de>



© 2010 Phoenix Contact  
Technical modifications reserved;