



Chipsmall Limited consists of a professional team with an average of over 10 year of expertise in the distribution of electronic components. Based in Hongkong, we have already established firm and mutual-benefit business relationships with customers from,Europe,America and south Asia,supplying obsolete and hard-to-find components to meet their specific needs.

With the principle of "Quality Parts,Customers Priority,Honest Operation,and Considerate Service",our business mainly focus on the distribution of electronic components. Line cards we deal with include Microchip,ALPS,ROHM,Xilinx,Pulse,ON,Everlight and Freescale. Main products comprise IC,Modules,Potentiometer,IC Socket,Relay,Connector.Our parts cover such applications as commercial,industrial, and automotives areas.

We are looking forward to setting up business relationship with you and hope to provide you with the best service and solution. Let us make a better world for our industry!



Contact us

Tel: +86-755-8981 8866 Fax: +86-755-8427 6832

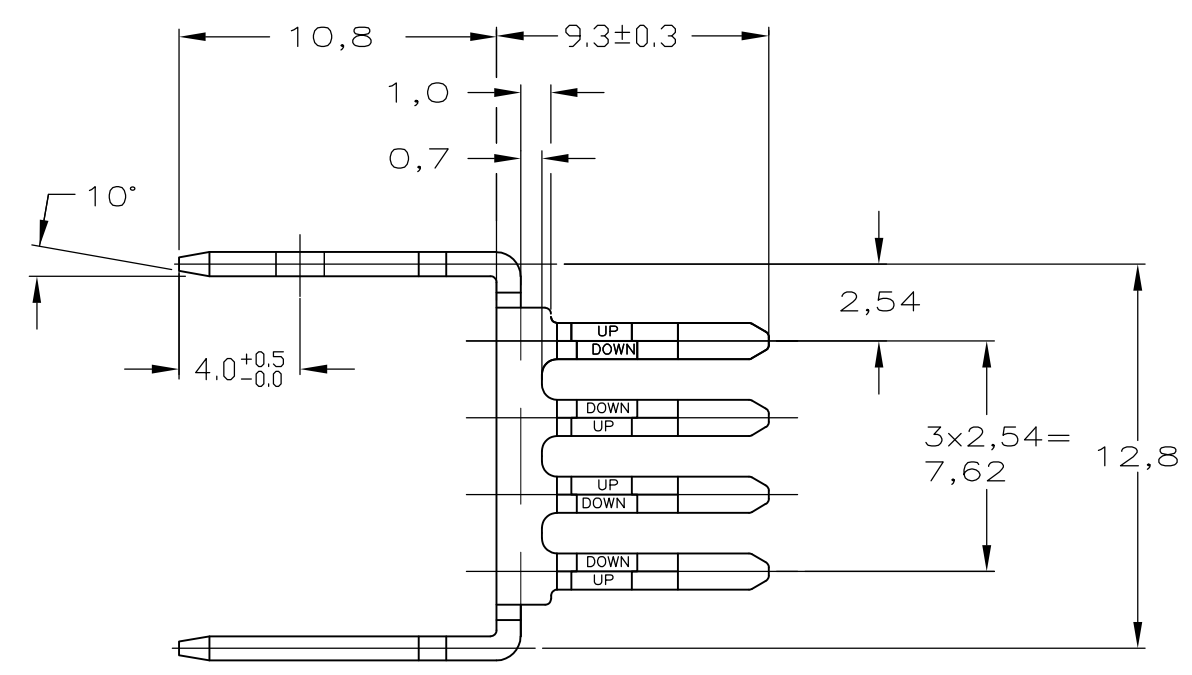
Email & Skype: info@chipsmall.com Web: www.chipsmall.com

Address: A1208, Overseas Decoration Building, #122 Zhenhua RD., Futian, Shenzhen, China



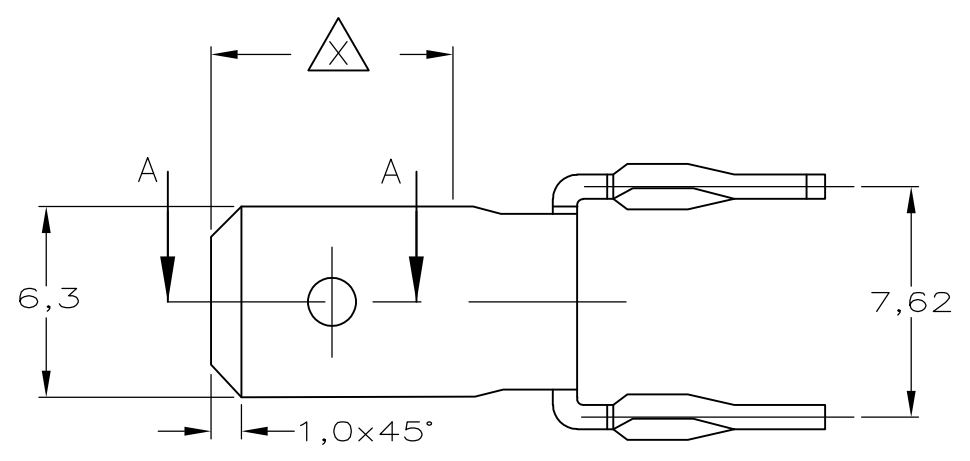
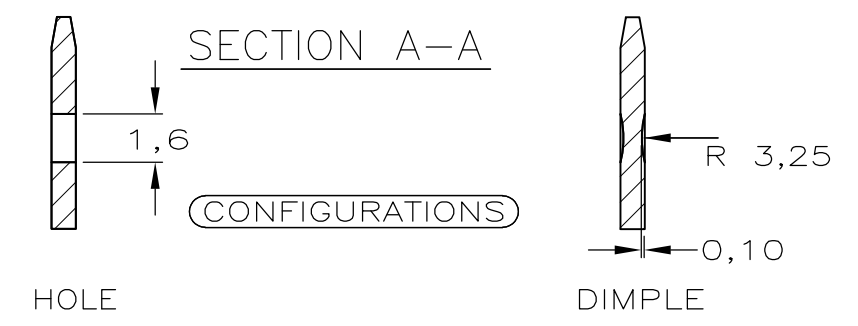
THIS DRAWING IS UNPUBLISHED. RELEASED FOR PUBLICATION
 © COPYRIGHT - By - ALL RIGHTS RESERVED.

LOC	DIST	REVISIONS					
H	-	P	LTR	DESCRIPTION	DATE	DWN	APVD
		F		ECR-12-014360	21SEP2012	SS	RRP



NOTES:

- ① PHOSPHORBRONZE.
- ② PLATING : AREA Δ Sn PLATE TO ASTM B 545. NI UNDERCOAT TO ASTM B 571 ALL OVER
- ③ PLATING : Sn PLATE TO ASTM B 545 AND NI UNDERCOAT TO ASTM B 571 ALL OVER
- ④ QUANTITY PER PACKAGE 1500 PCS.



DIMPLE	④②	①	1-167892-2
HOLE	②	①	167892-7
HOLE	③	①	167892-6
-			-
DIMPLE	③	①	167892-3
DIMPLE	②	①	167892-2
CONFIGURATION	FINISH	MATERIAL	PARTNUMBER

THIS DRAWING IS A CONTROLLED DOCUMENT.		DWN S.Meeuwsen 15JAN93	TE Connectivity 8 POS. POWER LINKING TERMINAL WITH ACTION PIN				
DIMENSIONS: mm		CHK R.v.Lokven 22JAN93				NAME	
TOLERANCES UNLESS OTHERWISE SPECIFIED:		APVD L.v.Soest 26JAN93				PRODUCT SPEC	108-19059
0 PLC ± - 1 PLC ± 0,2 2 PLC ± 0,1 3 PLC ± - 4 PLC ± - ANGLES ± 5°		APPLICATION SPEC					
MATERIAL -	FINISH -	WEIGHT -	SIZE	CAGE CODE	DRAWING NO	RESTRICTED TO	
CUSTOMER DRAWING			A3	00779	C-167892	-	
			SCALE	SHEET	REV		
			4:1	1 OF 1	F		