



Chipsmall Limited consists of a professional team with an average of over 10 year of expertise in the distribution of electronic components. Based in Hongkong, we have already established firm and mutual-benefit business relationships with customers from,Europe,America and south Asia,supplying obsolete and hard-to-find components to meet their specific needs.

With the principle of "Quality Parts,Customers Priority,Honest Operation,and Considerate Service",our business mainly focus on the distribution of electronic components. Line cards we deal with include Microchip,ALPS,ROHM,Xilinx,Pulse,ON,Everlight and Freescale. Main products comprise IC,Modules,Potentiometer,IC Socket,Relay,Connector.Our parts cover such applications as commercial,industrial, and automotives areas.

We are looking forward to setting up business relationship with you and hope to provide you with the best service and solution. Let us make a better world for our industry!



## Contact us

Tel: +86-755-8981 8866 Fax: +86-755-8427 6832

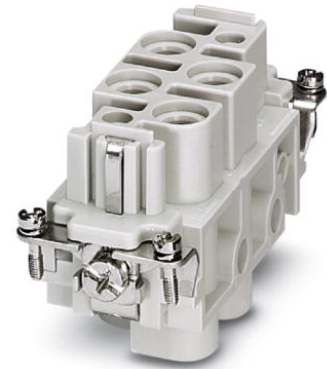
Email & Skype: info@chipsmall.com Web: www.chipsmall.com

Address: A1208, Overseas Decoration Building, #122 Zhenhua RD., Futian, Shenzhen, China




# HC-K 4/0-EBUS

Order No.: 1679427

<http://eshop.phoenixcontact.de/phoenix/treeViewClick.do?UID=1679427>

HEAVYCON female insert, K4/0 series, 4-pos., screw connection

**Commercial data**

GTIN (EAN)	 4 017918 168865
sales group	D007
Pack	1 pcs.
Customs tariff	85366990
Catalog page information	Page 445 (PC-2009)

**Product notes**WEEE/RoHS-compliant since:  
05/19/2006

<http://www.download.phoenixcontact.com>  
Please note that the data given here has been taken from the online catalog. For comprehensive information and data, please refer to the user documentation. The General Terms and Conditions of Use apply to Internet downloads.

**Technical data****General data**

Note	For HEAVYCON-ADVANCE housings of B16 type and HEAVYCON housings of B16 and B32 types
Connection method	Screw connection

Tightening torque	3 Nm (4.0 mm <sup>2</sup> ... 16 mm <sup>2</sup> )
	2 Nm (2.5 mm <sup>2</sup> )
	1.2 Nm (1.5 mm <sup>2</sup> )
Ambient temperature (operation)	-40 °C ... 125 °C
Pollution degree	3
Surge voltage category	III
Insertion/withdrawal cycles	≥ 500
Design	K4/0
Conductor cross-section	1.5 mm <sup>2</sup> ... 16 mm <sup>2</sup>
Connection cross-section AWG	16 ... 6
Stripping length of the individual wire	14 mm

#### Material data

Inflammability class acc. to UL 94	V0
Contact material	Cu alloy
Contact surface material	Ag
Contact carrier material	PC

#### Electrical characteristics

Rated voltage (III/3)	830 V
Rated surge voltage	8 kV
Rated current	80 A (power contacts)

#### Certificates / Approvals

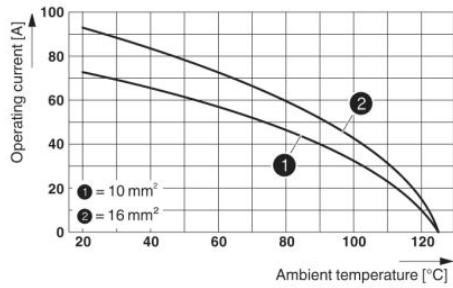


Certification

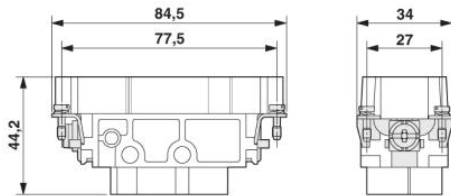
CSA, GOST, UL

## Diagrams/Drawings

### Diagram



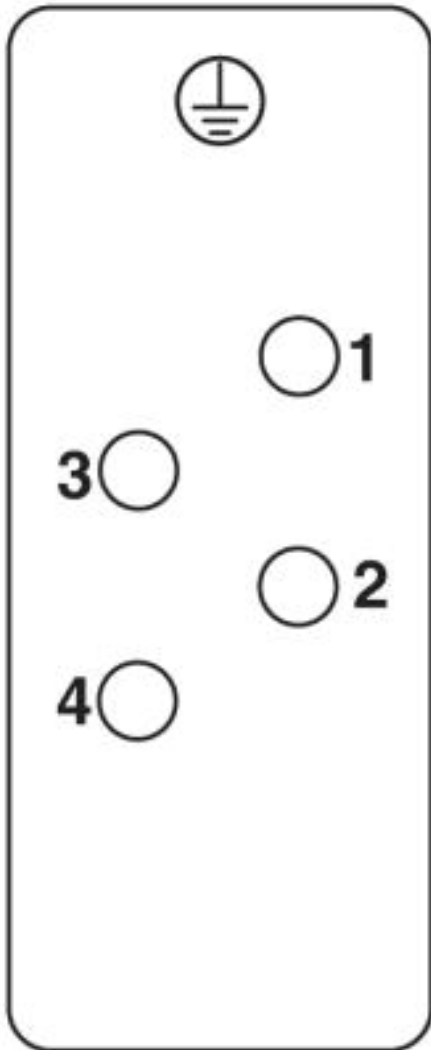
### Dimensioned drawing



Female insert

Schematic diagram

---



**Address**

PHOENIX CONTACT Deutschland GmbH  
Flachmarktstr. 8  
32825 Blomberg, Germany  
Phone +49 5235 3 12000  
Fax +49 5235 3 41200  
<http://www.phoenixcontact.de>



© 2010 Phoenix Contact  
Technical modifications reserved;