



Chipsmall Limited consists of a professional team with an average of over 10 year of expertise in the distribution of electronic components. Based in Hongkong, we have already established firm and mutual-benefit business relationships with customers from,Europe,America and south Asia,supplying obsolete and hard-to-find components to meet their specific needs.

With the principle of "Quality Parts,Customers Priority,Honest Operation,and Considerate Service",our business mainly focus on the distribution of electronic components. Line cards we deal with include Microchip,ALPS,ROHM,Xilinx,Pulse,ON,Everlight and Freescale. Main products comprise IC,Modules,Potentiometer,IC Socket,Relay,Connector.Our parts cover such applications as commercial,industrial, and automotives areas.

We are looking forward to setting up business relationship with you and hope to provide you with the best service and solution. Let us make a better world for our industry!



Contact us

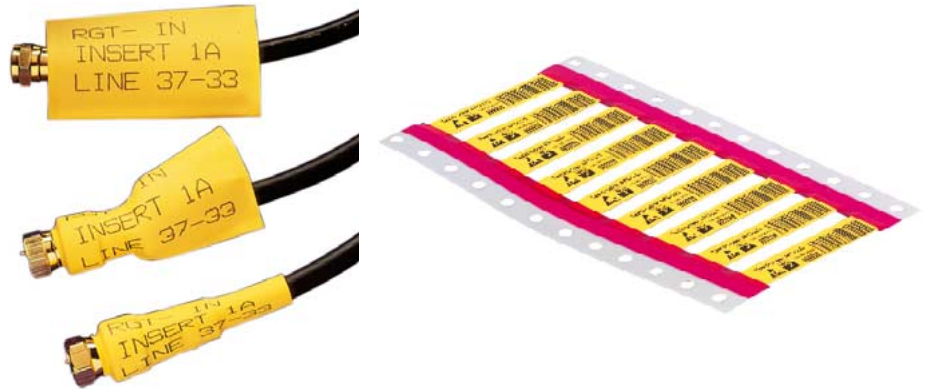
Tel: +86-755-8981 8866 Fax: +86-755-8427 6832

Email & Skype: info@chipsmall.com Web: www.chipsmall.com

Address: A1208, Overseas Decoration Building, #122 Zhenhua RD., Futian, Shenzhen, China



CLS



The **CLS** heat-shrinkable tubes are particularly tight-fitting and as a result sit securely on the cable. They are printed using thermal transfer printers or matrix printers. **CLS** markers are an attractive alternative where installation space is limited. They combine the optimised use of small labelling areas with high-quality printing.

- Extremely tight fit so as to sit securely on the cable
- High-quality printing for small labelling areas
- Fast printing using thermal transfer or matrix printers

M-Label software for printing on page 65.

Technical data

Material	molecularly cross-linked polyolefine		
Flammability	UL 224 VW-1		
Temperature range	CLS: -30°C ... +105°C		
Dimensions	Sizes	External diameter	For cable diameters
		3.2 mm	1.2 - 2.7 mm
		4.8 mm	1.7 - 4.1 mm
		6.4 mm	2.3 - 5.4 mm
		12.7 mm	4.5 - 10.8 mm
		25.4 mm	9.1 - 21.6 mm
	Length: 55 mm (one, two or three-part with perforation)		
Colour	CLS: white or yellow		
Possible marking systems	matrix or thermal transfer printer		
Wipe resistance	against abrasion, cleaning agents after shrinking		
Max. shrinking rate	3 : 1		

Ordering data

Type	Order no.	QTY
Single-part length 48 mm		
CLS 3.2/1 white	1680500000	1000
CLS 4.8/1 white	1680510000	1000
CLS 6.4/1 white	1680520000	1000
CLS 12.7/1 white	1680530000	250
CLS 3.2/1 yellow	1680550000	1000
CLS 4.8/1 yellow	1680560000	1000
CLS 6.4/1 yellow	1680570000	100
CLS 12.7/1 yellow	1680580000	250
Two-part length 24 mm		
CLS 3.2/2 white	1680600000	1000
CLS 4.8/2 white	1680610000	1000
CLS 6.4/2 white	1680620000	1000
CLS 12.7/2 white	1680630000	250
CLS 3.2/2 yellow	1680650000	1000
CLS 4.8/2 yellow	1680660000	1000
CLS 6.4/2 yellow	1680670000	1000
CLS 12.7/2 yellow	1680680000	250

Ordering data

Type	Order no.	QTY
Three-part length 16 mm		
CLS 3.2/3 white	1680700000	1000
CLS 4.8/3 white	1680710000	1000
CLS 6.4/3 white	1680720000	1000
CLS 12.7/3 white	1680730000	250
CLS 3.2/3 yellow	1680750000	1000
CLS 4.8/3 yellow	1680760000	1000
CLS 6.4/3 yellow	1680770000	1000
CLS 12.7/3 yellow	1680780000	250