



Chipsmall Limited consists of a professional team with an average of over 10 year of expertise in the distribution of electronic components. Based in Hongkong, we have already established firm and mutual-benefit business relationships with customers from,Europe,America and south Asia,supplying obsolete and hard-to-find components to meet their specific needs.

With the principle of “Quality Parts,Customers Priority,Honest Operation,and Considerate Service”,our business mainly focus on the distribution of electronic components. Line cards we deal with include Microchip,ALPS,ROHM,Xilinx,Pulse,ON,Everlight and Freescale. Main products comprise IC,Modules,Potentiometer,IC Socket,Relay,Connector.Our parts cover such applications as commercial,industrial, and automotives areas.

We are looking forward to setting up business relationship with you and hope to provide you with the best service and solution. Let us make a better world for our industry!



Contact us

Tel: +86-755-8981 8866 Fax: +86-755-8427 6832

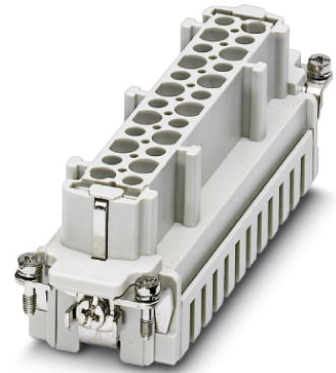
Email & Skype: info@chipsmall.com Web: www.chipsmall.com

Address: A1208, Overseas Decoration Building, #122 Zhenhua RD., Futian, Shenzhen, China




HC-B 24-EBUZ

Order No.: 1687927



<http://eshop.phoenixcontact.de/phoenix/treeViewClick.do?UID=1687927>

HEAVYCON female housing for B24 housing, with 24 contacts, spring-cage connection

| Commercial data | |
|--------------------------|---|
| GTIN (EAN) |  4 017918 849634 |
| sales group | D000 |
| Pack | 1 pcs. |
| Customs tariff | 85369010 |
| Catalog page information | Page 433 (PC-2009) |

Product notes

WEEE/RoHS-compliant since:
06/29/2006



<http://www.download.phoenixcontact.com>
Please note that the data given here has been taken from the online catalog. For comprehensive information and data, please refer to the user documentation. The General Terms and Conditions of Use apply to Internet downloads.

Technical data

| General data | |
|---------------------------------|--|
| Note | For housing HC-B24 |
| Connection method | Spring-cage connection |
| Ambient temperature (operation) | -40 °C ... 125 °C (including heating up of contacts) |
| Pollution degree | 3 |
| Surge voltage category | III |

| | |
|---|--|
| Number of positions | 24 |
| Insertion/withdrawal cycles | ≥ 500 |
| Design | B24 |
| Conductor cross-section | 0.14 mm ² ... 2.5 mm ² |
| Connection cross-section AWG | 26 ... 14 |
| Stripping length of the individual wire | 8 mm +-1 mm |
| Connection | For housings of type B16/B32. Connectors may only be actuated when there is no load/voltage. |

Material data

| | |
|------------------------------------|--------------|
| Inflammability class acc. to UL 94 | V0 |
| Contact material | Copper alloy |
| Contact surface material | Ag |
| Contact carrier material | PC |

Electrical characteristics

| | |
|-----------------------|-------|
| Rated voltage (III/3) | 500 V |
| Rated surge voltage | 6 kV |
| Rated current | 16 A |

Certificates / Approvals



Certification

CUL, GOST, UL

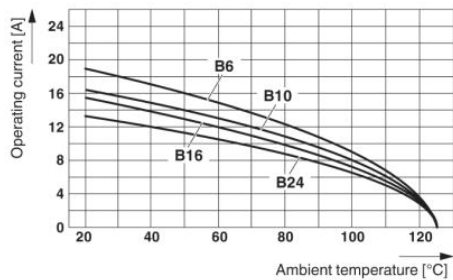
Accessories

| Item | Designation | Description |
|----------------|----------------|--|
| General | | |
| 1586141 | HC-B 24-ANDOCK | Docking frame for racks, for contact inserts of B24 type, with four M5 flat headed screws, rack balance x/y axis +- 1.5 mm |
| 1644326 | HC-B-3PE | PE multiplier, for three PE connections, for HC-B (besides HC-B..E..ZZ) / HC-BB / HC-DD / HC-D40 / HC-D64 contact inserts |
| 1604997 | HC-B-PES | PE screw, for contact inserts HC-B / HC-BB / HC-DD / HC-D40 / HC-D64 |

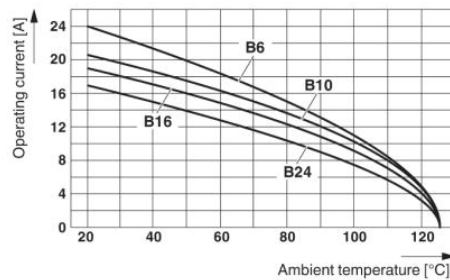
| | | |
|---------|--------------------|---|
| 1685327 | HC-B-ZG | Strain relief clamps contact inserts of series: B-, BB-, D 40, D 64, DD and HV, straight cable exit |
| 1685330 | HC-B-ZS | Strain relief clamps contact inserts of series: B-, BB-, D 40, D 64, DD and HV, lateral cable exit |
| 1772722 | HC-CB | Coding pin, prevents mismatching of up to six plug connectors with an identical number of positions |
| 1676860 | HC-CBU | Keying socket for coding up to 16 plug connectors |
| 1676857 | HC-CST | Keying peg for coding up to 16 plug connectors |
| 1660944 | HC-SMP 150-B24-AMQ | HEAVYCON connector assembly frame with panel mounting base with double locking latch, for contact inserts of type B24 |
| 1687985 | HC-SMR-B24 | HEAVYCON connector assembly frame, for contact inserts of type B24 |

Diagrams/Drawings

Diagram

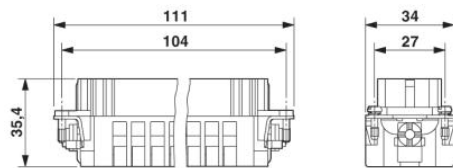


The illustration shows the derating diagram of various series B contact inserts (B6 to B24), conductor cross section 1.5 mm²

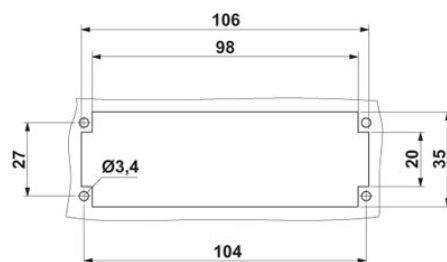


The illustration shows the derating diagram of various series B contact inserts (B6 to B24), conductor cross section 2.5 mm²

Dimensioned drawing



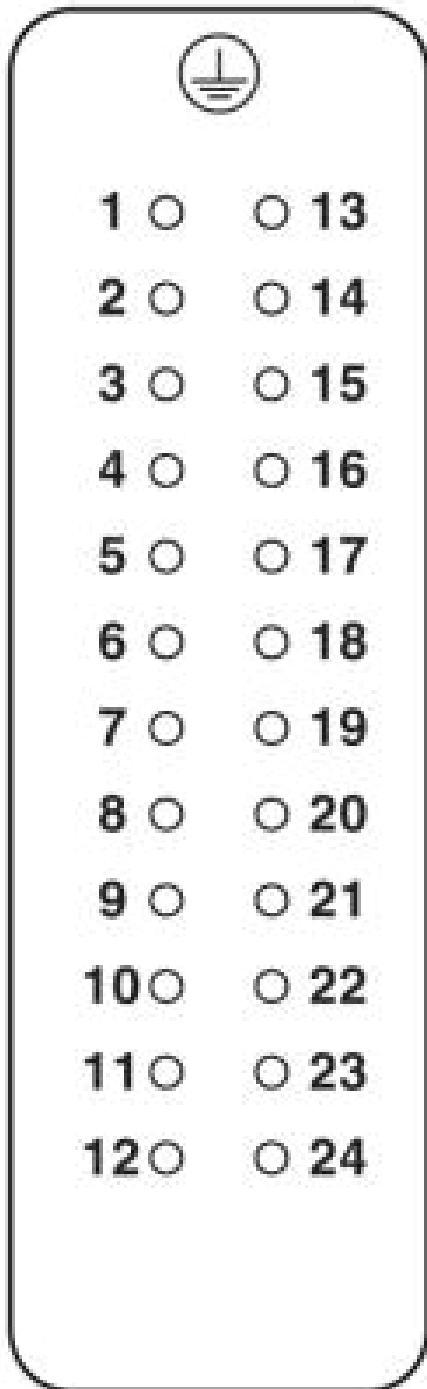
Female insert



Panel cutout

Schematic diagram

Connector pin assignment, connection side



Address

PHOENIX CONTACT Inc., USA
586 Fulling Mill Road
Middletown, PA 17057, USA
Phone (800) 888-7388
Fax (717) 944-1625
<http://www.phoenixcon.com>



© 2010 Phoenix Contact
Technical modifications reserved;