



Chipsmall Limited consists of a professional team with an average of over 10 year of expertise in the distribution of electronic components. Based in Hongkong, we have already established firm and mutual-benefit business relationships with customers from,Europe,America and south Asia,supplying obsolete and hard-to-find components to meet their specific needs.

With the principle of “Quality Parts,Customers Priority,Honest Operation,and Considerate Service”,our business mainly focus on the distribution of electronic components. Line cards we deal with include Microchip,ALPS,ROHM,Xilinx,Pulse,ON,Everlight and Freescale. Main products comprise IC,Modules,Potentiometer,IC Socket,Relay,Connector.Our parts cover such applications as commercial,industrial, and automotives areas.

We are looking forward to setting up business relationship with you and hope to provide you with the best service and solution. Let us make a better world for our industry!



Contact us

Tel: +86-755-8981 8866 Fax: +86-755-8427 6832

Email & Skype: info@chipsmall.com Web: www.chipsmall.com

Address: A1208, Overseas Decoration Building, #122 Zhenhua RD., Futian, Shenzhen, China



RJ45 coupling - VS-08-KU-IP67 - 1689268

Please be informed that the data shown in this PDF Document is generated from our Online Catalog. Please find the complete data in the user's documentation. Our General Terms of Use for Downloads are valid (<http://download.phoenixcontact.com>)



RJ45 coupling, IP67, CAT5e, with protective cover, color: gray



Key commercial data

| | |
|------------------------|---|
| Packing unit | 1 |
| Minimum order quantity | 1 |
| Catalog page | Page 329 (PC-2011) |
| GTIN |  4 017918 938185 |
| Custom tariff number | 85366990 |
| Country of origin | GERMANY |

Technical data

Mechanical characteristics

| | |
|---|------------------|
| Number of positions | 8 |
| Connection profile | RJ45 8(8) |
| Insertion/withdrawal cycles | ≥ 750 |
| Cable exit | Straight |
| Color | gray |
| Ambient temperature (operation) | -10 °C ... 60 °C |
| Ambient temperature (storage/transport) | -40 °C ... 70 °C |

Material data

| | |
|---|------------------|
| Inflammability class according to UL 94 | V0 |
| Housing material | PBT |
| Contact carrier material | Thermoplastic |
| Contact material | Copper alloy |
| Contact surface material | Gold over nickel |
| Sealing material | NBR |
| Seal material | NBR |
| Degree of protection | IP67 |

RJ45 coupling - VS-08-KU-IP67 - 1689268

Technical data

Electrical characteristics

| | |
|---|--|
| Number of positions | 8 |
| Transmission characteristics (category) | CAT5 (IEC 11801:2002), CAT5e (TIA 568B:2001) |
| Rated current | 1 A |
| Surge voltage category | I |
| Pollution degree | 1 |

Classifications

eclass

| | |
|------------|----------|
| eCl@ss 4.0 | 27140816 |
| eCl@ss 4.1 | 27260701 |
| eCl@ss 5.0 | 27260701 |
| eCl@ss 5.1 | 27260701 |
| eCl@ss 6.0 | 27261203 |
| eCl@ss 7.0 | 27440202 |

etim

| | |
|----------|----------|
| ETIM 2.0 | EC000437 |
| ETIM 3.0 | EC000437 |
| ETIM 4.0 | EC000437 |
| ETIM 5.0 | EC001121 |

unspsc

| | |
|---------------|----------|
| UNSPSC 6.01 | 31261501 |
| UNSPSC 7.0901 | 31261501 |
| UNSPSC 11 | 31261501 |
| UNSPSC 12.01 | 31261501 |
| UNSPSC 13.2 | 31261501 |

Approvals

Approvals

Approvals

UL Recognized / cUL Recognized / cULus Recognized

Ex Approvals

Approvals submitted

RJ45 coupling - VS-08-KU-IP67 - 1689268

Approvals

Approval details

| | |
|--------------------------------|--------|
| UL Recognized | |
| Nominal current I _N | 1.75 A |
| Nominal voltage U _N | 50 V |

| | |
|--------------------------------|--------|
| cUL Recognized | |
| Nominal current I _N | 1.75 A |
| Nominal voltage U _N | 50 V |

| | |
|------------------|--|
| cULus Recognized | |
|------------------|--|

Accessories

Accessories

Protective covers

Protective covers - VS-08-SD-F - 1652606

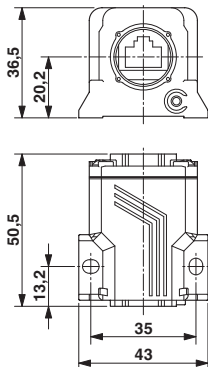
Protective cover, IP67, flat design, to cover the contact insert in the panel mounting frame, color: gray



Drawings

RJ45 coupling - VS-08-KU-IP67 - 1689268

Dimensioned drawing



RJ45 coupling

© Phoenix Contact 2012 - all rights reserved
<http://www.phoenixcontact.com>