



Chipsmall Limited consists of a professional team with an average of over 10 year of expertise in the distribution of electronic components. Based in Hongkong, we have already established firm and mutual-benefit business relationships with customers from,Europe,America and south Asia,supplying obsolete and hard-to-find components to meet their specific needs.

With the principle of “Quality Parts,Customers Priority,Honest Operation,and Considerate Service”,our business mainly focus on the distribution of electronic components. Line cards we deal with include Microchip,ALPS,ROHM,Xilinx,Pulse,ON,Everlight and Freescale. Main products comprise IC,Modules,Potentiometer,IC Socket,Relay,Connector.Our parts cover such applications as commercial,industrial, and automotives areas.

We are looking forward to setting up business relationship with you and hope to provide you with the best service and solution. Let us make a better world for our industry!



## Contact us

Tel: +86-755-8981 8866 Fax: +86-755-8427 6832

Email & Skype: info@chipsmall.com Web: www.chipsmall.com

Address: A1208, Overseas Decoration Building, #122 Zhenhua RD., Futian, Shenzhen, China





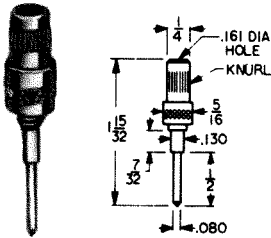
Designers' Choice

# TEST TIPS & PLUGS

**SPECIFICATIONS:** Tips: Brass, Nickel Plate  
 Handles: Nylon 6/6, Available in Red or Black  
 Rating: 10 Amps AC for 100° C temperature rise, continuous duty

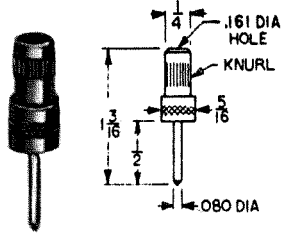
## FORCE FIT SOLDERLESS TIPS

SENIOR



CAT. NO. 1690

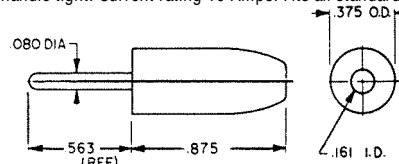
JUNIOR



CAT. NO. 1680

## SOLDERLESS - .080 DIA. TIP PLUGS

Fully insulated molded nylon sleeve. Maximum reliability with minimum contact resistance. Recessed metal head eliminates possibility of shock or grounding. Designed for solderless connection of up to 16 gauge stranded wire which fits through handle and tip and is secured by screwing handle tight. Current rating 10 Amps. Fits all standard tip jacks.

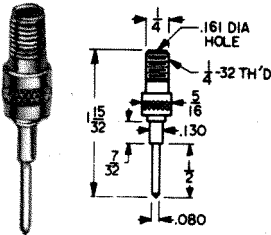


SELECTION OF COLORS

CAT. NO.	COLOR	CAT. NO.	COLOR
6000	WHITE	6003	GREEN
6001	RED	6004	YELLOW
6002	BLACK	6005	BLUE

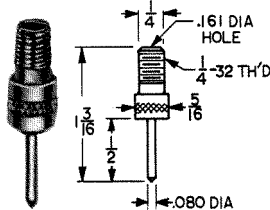
## THREADED SOLDERLESS TIP

SENIOR



CAT. NO. 1691

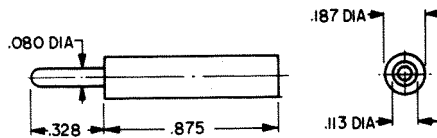
JUNIOR



CAT. NO. 1681

## MINIATURE - .080 DIA. TIP PLUGS

Designed for miniaturization where space is critical. Solder lead connection. Maximum reliability with minimum contact resistance. Base of tip is recessed to eliminate shock or grounding. Fits horizontal tip jacks. Current rating: 10 Amps.

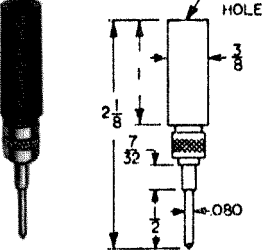


SELECTION OF COLORS

CAT. NO.	COLOR	CAT. NO.	COLOR
6006	WHITE	6009	GREEN
6007	RED	6010	YELLOW
6008	BLACK	6011	BLUE

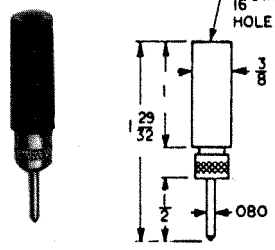
## INSULATED SOLDERLESS TIP

SENIOR



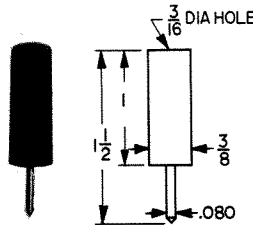
CAT. NO. 1660- RED  
 CAT. NO. 1661- BLACK

JUNIOR

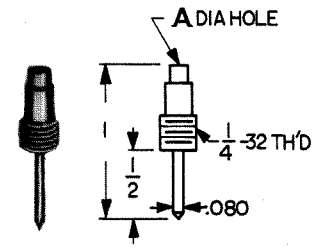


CAT. NO. 1670- RED  
 CAT. NO. 1671- BLACK

## STREAMLINE TIPS

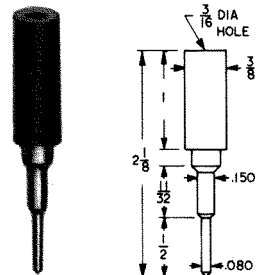


CAT. NO. 1615 - RED  
 CAT. NO. 1616 - BLACK



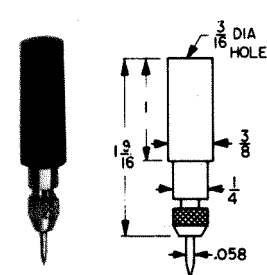
CAT. NO.	A
3022-12	.120
3022-20	.093

## HEAVY DUTY



CAT. NO. 3017 - RED  
 CAT. NO. 3018 - BLACK  
 CAT. NO. 3019 - TIP ONLY

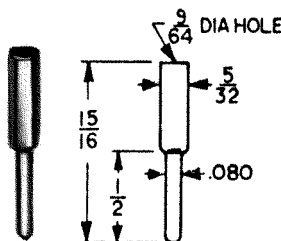
## NEEDLE TIPS



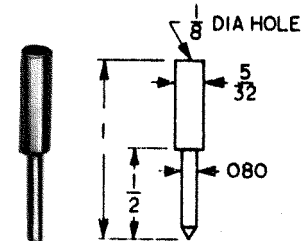
CAT. NO. 3015 - RED  
 CAT. NO. 3016 - BLACK  
 CAT. NO. 3014 - TIP ONLY

## STANDARD PHONE TIPS

Ideal for replacement tip for headset, speaker, or extension cord. Cat. No. 1601 Tip accommodates heavier wire.



CAT. NO. 1600



CAT. NO. 1601