



Chipsmall Limited consists of a professional team with an average of over 10 year of expertise in the distribution of electronic components. Based in Hongkong, we have already established firm and mutual-benefit business relationships with customers from,Europe,America and south Asia,supplying obsolete and hard-to-find components to meet their specific needs.

With the principle of “Quality Parts,Customers Priority,Honest Operation,and Considerate Service”,our business mainly focus on the distribution of electronic components. Line cards we deal with include Microchip,ALPS,ROHM,Xilinx,Pulse,ON,Everlight and Freescale. Main products comprise IC,Modules,Potentiometer,IC Socket,Relay,Connector.Our parts cover such applications as commercial,industrial, and automotives areas.

We are looking forward to setting up business relationship with you and hope to provide you with the best service and solution. Let us make a better world for our industry!



Contact us

Tel: +86-755-8981 8866 Fax: +86-755-8427 6832

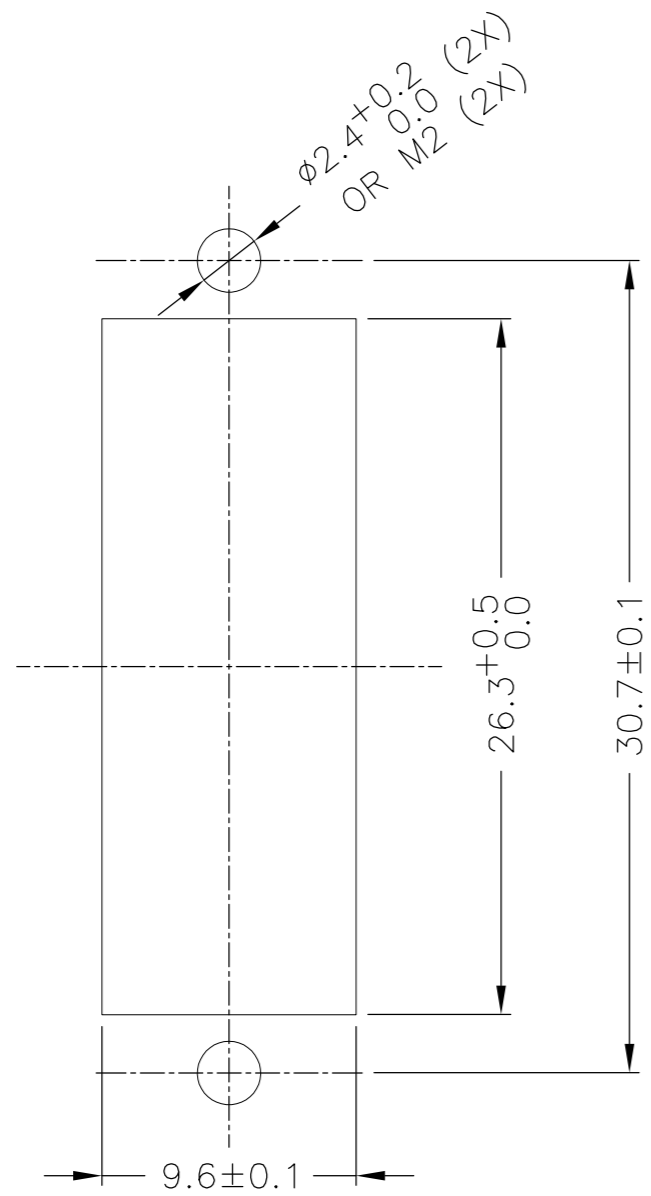
Email & Skype: info@chipsmall.com Web: www.chipsmall.com

Address: A1208, Overseas Decoration Building, #122 Zhenhua RD., Futian, Shenzhen, China

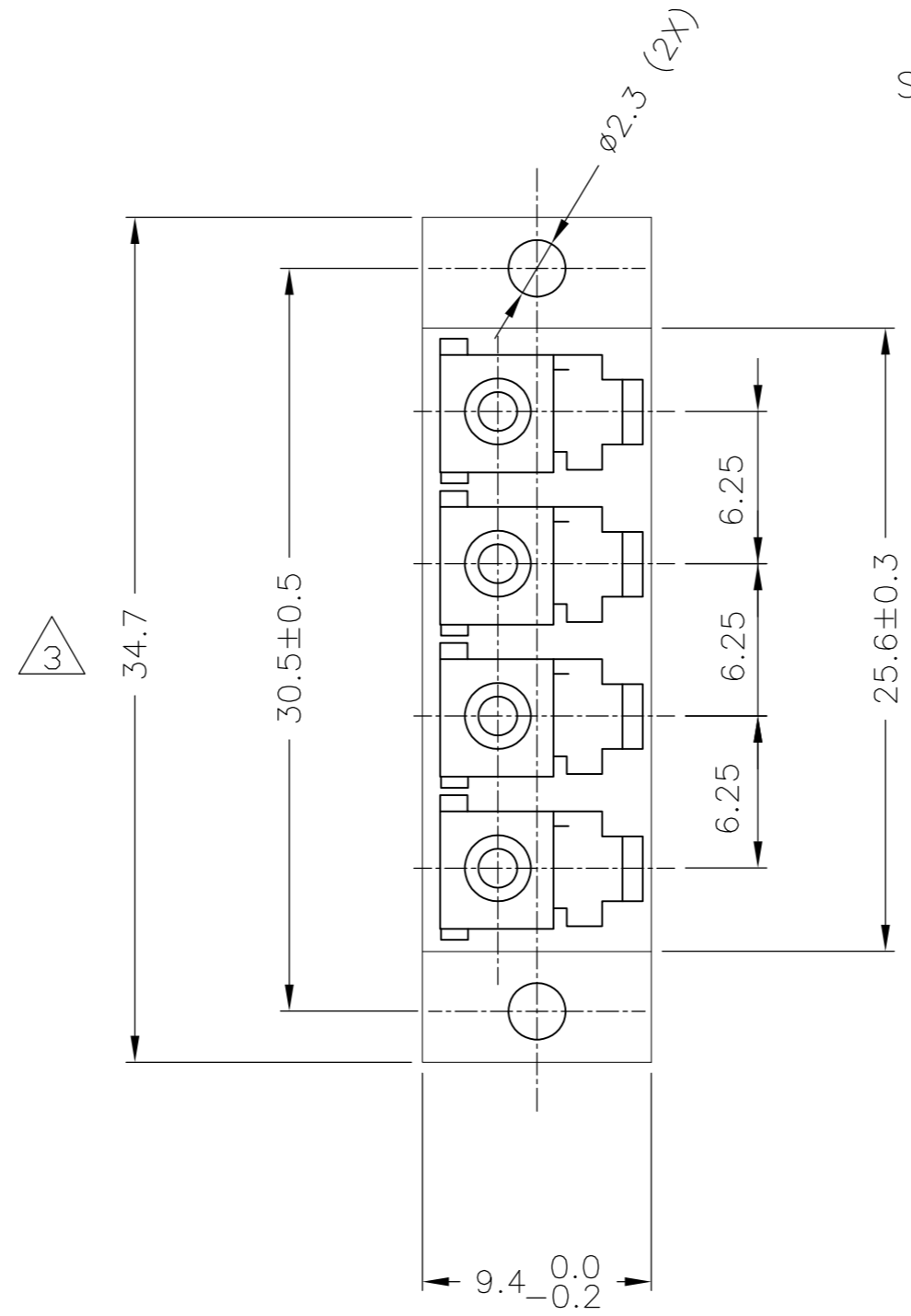


THIS DRAWING IS UNPUBLISHED. RELEASED FOR PUBLICATION
 © COPYRIGHT - By - ALL RIGHTS RESERVED.

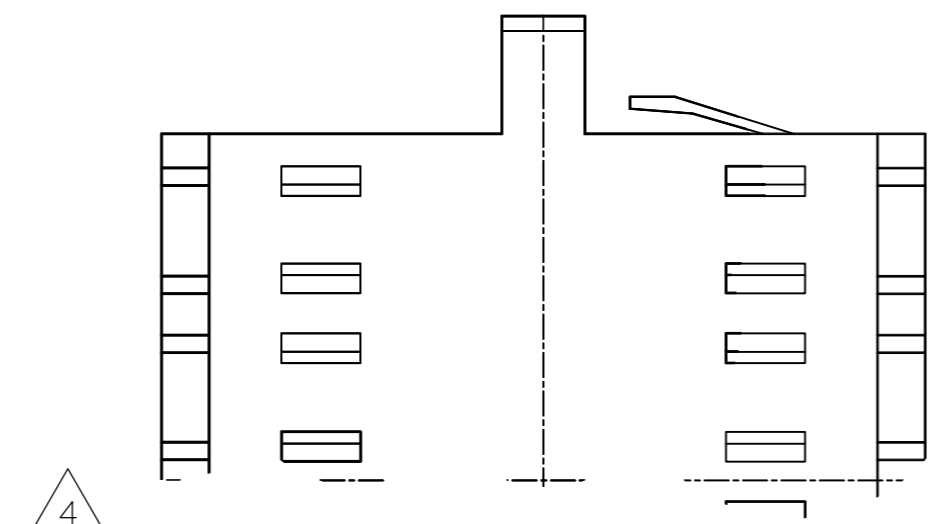
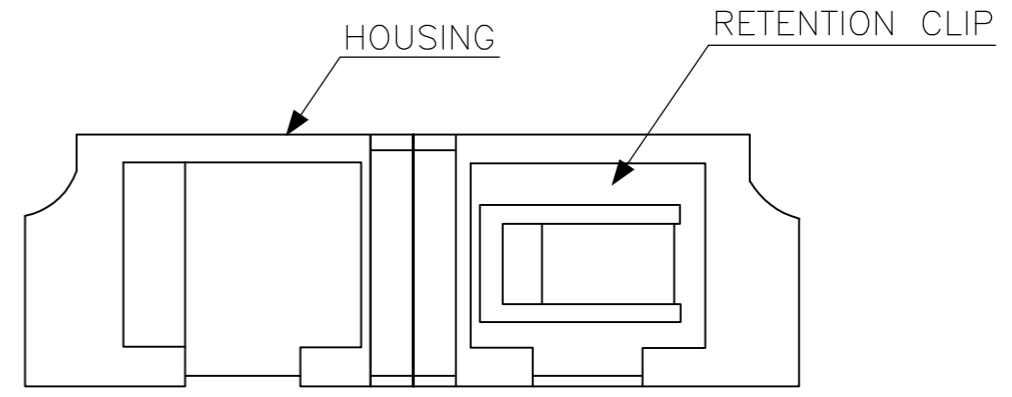
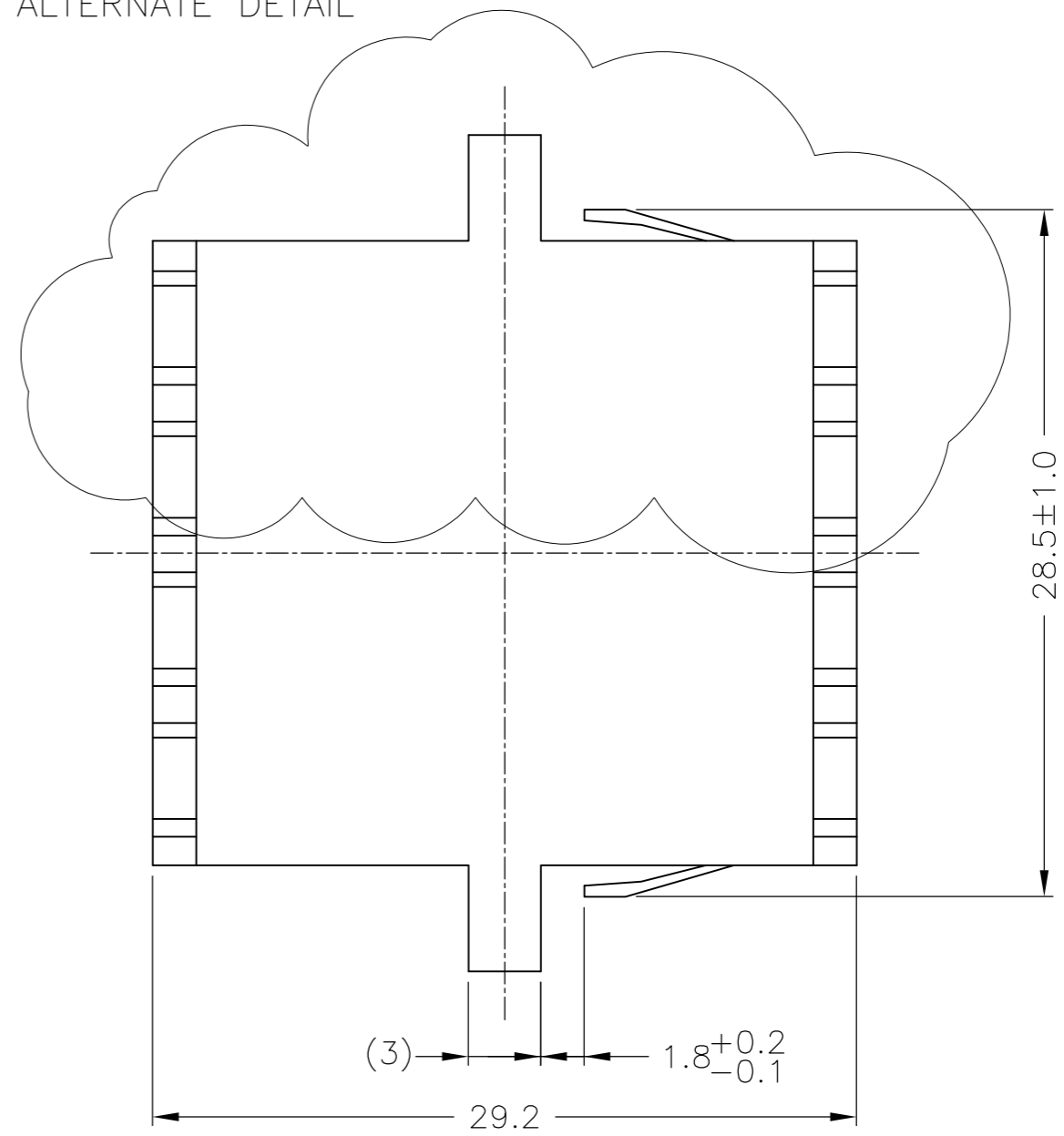
LOC		DIST		REVISIONS			
P	LTR	DESCRIPTION	DATE	DWN	APVD		
H	-	E1	REVISED PER ECO-11-005294	02APR11	RK	HMR	



RECOMMENDED PANEL CUT-OUT
 MAX PANEL THICKNESS 1.7
 (INFORMATIVE REFERENCE)



SEE ALTERNATE DETAIL



ALTERNATE DETAIL WITH SLOTS

NOTES:

- 1 MATERIAL:
 HOUSING: THERMOPLASTIC, UL 94-V0
 ALIGNMENT SLEEVES: SEE TABLE
 RETENTION CLIP: SST
- 2 DUST PLUGS ARE SUPPLIED, NOT SHOWN.
- 3 FLANGELESS VERSION HAS AN OVERALL WIDTH OF 28.5 ±0.5mm
- 4 ALTERNATE DETAIL WITH SLOTS

SLEEVE MAT'L	HOUSING COLOR	DESCRIPTION	PART NUMBER
CERAMIC	AQUA	FLANGELESS	1-1695790-1
CERAMIC	AQUA	FLANGED	1-1695790-0
METAL	AQUA	FLANGED	1695790-9
CERAMIC	BEIGE	FLANGED	1695790-8
METAL	BEIGE	FLANGELESS	1695790-7
CERAMIC	GREEN	FLANGED	1695790-6
METAL	BEIGE	FLANGED	1695790-5
CERAMIC	BLUE	FLANGED	1695790-4
CERAMIC	GREEN	FLANGELESS	1695790-3
CERAMIC	BEIGE	FLANGELESS	1695790-2
CERAMIC	BLUE	FLANGELESS	1695790-1

THIS DRAWING IS A CONTROLLED DOCUMENT.

DWN GIRIYAPPA M 22 SEP 05		TE Connectivity		
CHK A. HENGELMOLEN 30 JUN 06		FOAC LC QUAD ADAPTER		
APVD A. HENGELMOLEN 30 JUN 06		SIZE A2	CAGE CODE 00779	DRAWING NO C=1695790
PRODUCT SPEC APPLICATION SPEC		SCALE NTS	SHEET 1 OF 1	RESTRICTED TO REV E1

MATERIAL: - 1 FINISH: - WEIGHT: - CUSTOMER DRAWING