



Chipsmall Limited consists of a professional team with an average of over 10 year of expertise in the distribution of electronic components. Based in Hongkong, we have already established firm and mutual-benefit business relationships with customers from,Europe,America and south Asia,supplying obsolete and hard-to-find components to meet their specific needs.

With the principle of “Quality Parts,Customers Priority,Honest Operation,and Considerate Service”,our business mainly focus on the distribution of electronic components. Line cards we deal with include Microchip,ALPS,ROHM,Xilinx,Pulse,ON,Everlight and Freescale. Main products comprise IC,Modules,Potentiometer,IC Socket,Relay,Connector.Our parts cover such applications as commercial,industrial, and automotives areas.

We are looking forward to setting up business relationship with you and hope to provide you with the best service and solution. Let us make a better world for our industry!



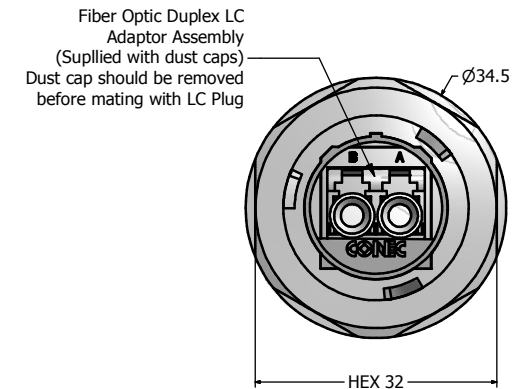
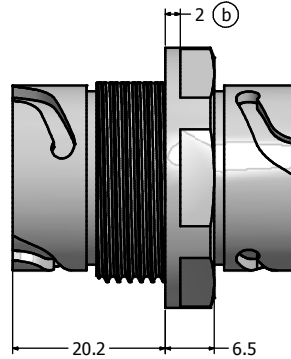
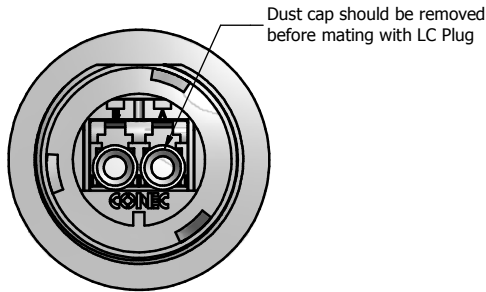
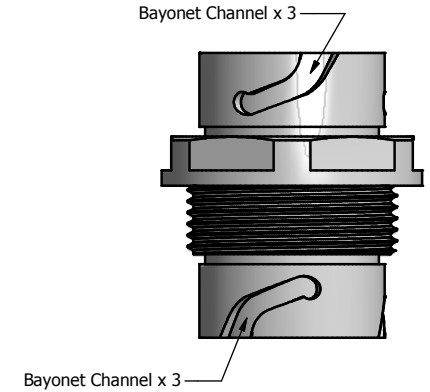
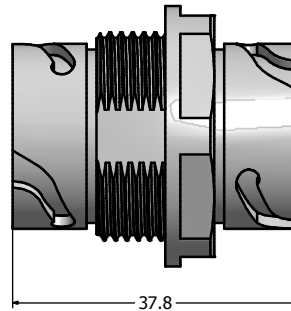
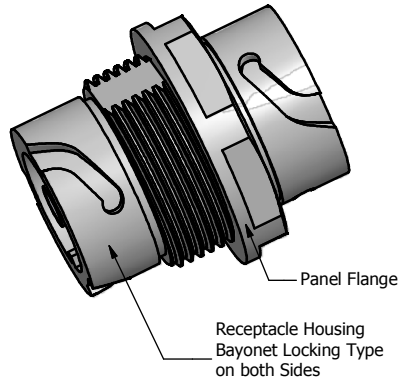
Contact us

Tel: +86-755-8981 8866 Fax: +86-755-8427 6832

Email & Skype: info@chipsmall.com Web: www.chipsmall.com

Address: A1208, Overseas Decoration Building, #122 Zhenhua RD., Futian, Shenzhen, China





Notes:

1. Material and Finish:
 - Receptacle Housing: Polyester (Black), UL94 V-0;
 - (b) or ABS, Nickel Plated, UL94 V-0,
 - Duplex LC Adaptor Assembly:
 - Housing: Mod. PPO, UL94 V-0,
 - Color: **SM Blue/MM Beige/APC SM Green**
 - Alignment Sleeves: SM Ceramic/MM Phosphor Bronze
 - Dust Cap: PP, Color: Neutral transparent
 - Operating Temperature: -40°C to +85°C
2. Connector can be mounted to a maximum panel thickness of 3.2mm.
3. IP67 rated when covered or fully mated with the appropriate mating connector

Directive 2002/95/EC RoHS Compliant

(b)	Description	Plastic Version	Metallized Version
	Single Mode (SM)	17-300790	17-300910
	Multi Mode (MM)	17-300800	17-300920
	APC Single Mode (APC SM)	17-300810	17-300930

THIS DRAWING MAY NOT BE COPIED OR REPRODUCED IN ANY WAY AND MAY NOT BE PASSED ON TO A THIRD PARTY WITHOUT WRITTEN PERMISSION. OWNERSHIP AND COPYRIGHT OF CONEC CORPORATION.	Customer:			Tolerance Unless otherwise specified			Scale:	Dim. in mm	
	Name	Title	Approval Date	0 PLC ±0.50	1 PLC ±0.38		2 PLC ±0.25	3 PLC ±0.10	ANGLES ±3°
				2012	Date	Name	Material: See Notes		
				Draw.	Sept. 28	Vincent Ke	Title: IP67 Industrial Duplex LC Receptacle Assembly Kit		
				Appd.	Sept. 28	J. Chaudry	Plastic Version with bayonet on both sides		
						Norm	Drawing No.: 17K1A332		DIN A3
							Part No.: SEE PART NUMBER TABLE		Sheet 1/1
	Rev.	Changes	Date	Name					