



Chipsmall Limited consists of a professional team with an average of over 10 year of expertise in the distribution of electronic components. Based in Hongkong, we have already established firm and mutual-benefit business relationships with customers from,Europe,America and south Asia,supplying obsolete and hard-to-find components to meet their specific needs.

With the principle of “Quality Parts,Customers Priority,Honest Operation,and Considerate Service”,our business mainly focus on the distribution of electronic components. Line cards we deal with include Microchip,ALPS,ROHM,Xilinx,Pulse,ON,Everlight and Freescale. Main products comprise IC,Modules,Potentiometer,IC Socket,Relay,Connector.Our parts cover such applications as commercial,industrial, and automotives areas.

We are looking forward to setting up business relationship with you and hope to provide you with the best service and solution. Let us make a better world for our industry!



## Contact us

Tel: +86-755-8981 8866 Fax: +86-755-8427 6832

Email & Skype: info@chipsmall.com Web: www.chipsmall.com

Address: A1208, Overseas Decoration Building, #122 Zhenhua RD., Futian, Shenzhen, China

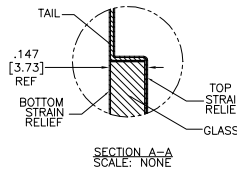


OGA DIAGONAL: 18.25 [463.63]  
 VA DIAGONAL: 17.54 [445.50]  
 PA DIAGONAL: 16.54 [420.12]

TOP LEVEL NUMBER	US NUMBER	TYPE	DIM "A" (TOTAL GLASS TO CONNECTOR)	A/G FINISH	PROD SPEC
17-8421-203	98-0003-2589-8	FFC	4.27" [108.46]	AG500	23655
17-8421-221	98-0003-2596-3	SER	4.27" [108.46]	AG500	23655
17-8421-204	98-0003-2590-6	FFC	6.00" [152.40]	AG500	23655
17-8421-223	98-0003-2597-1	SER	6.00" [152.40]	AG500	23655
17-8421-227	98-0003-2599-7	SER	8.00" [203.20]	AG500	23655
17-8421-205	98-0003-2591-4	FFC	8.00" [203.20]	AG500	23655
17-8421-206	98-0003-2190-5	NOV	SEE DWG	AG500	23655
17-8421-218	98-0003-2594-8	USB R	4.27" [108.46]	AG500	23655
17-8421-220	98-0003-3151-6	USB R	6.00" [152.40]	AG500	23655
17-8421-226	98-0003-3152-4	USB R	8.00" [203.20]	AG500	23655
17-8421-230	98-0003-2276-2	HID M	8.00" [203.20]	AG500	23655
N/A	98-0003-3537-6	HID D	8.00" [203.20]	AG500	23655
N/A	98-0003-3974-1	DUAL	8.00" [203.20]	AG500	23655
N/A	98-1100-0095-1	FFC	8.00" [203.20]	WC100	34523
N/A	98-1100-0096-9	USB R	8.00" [203.20]	WC100	34523

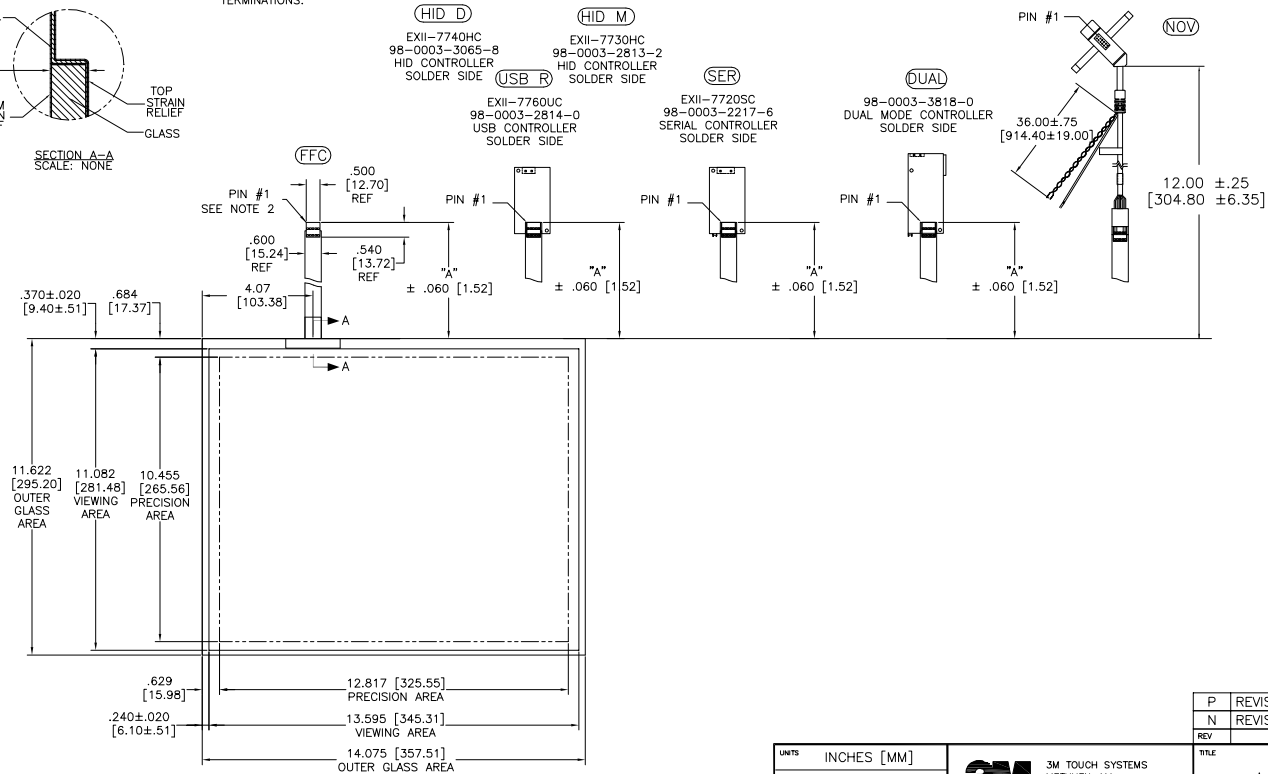


ESD CLAMSHELL CASE IS USED WITH ALL NOV, USB AND SER TERMINATIONS.



.147±.020 [3.73±.51]  
 TOTAL THICKNESS OF GLASS, CABLE AND STRAIN RELIEF

.125 [3.18] REF



NOTES:

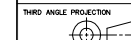
- WEIGHT OF GLASS IN GRAMS: 804±10%
- NICOMATIC HOUSING P/N: OLOS
- NICOMATIC RECEPTACLES (PINS) MATTE TIN PLATED P/N: 14106-12 HOUSING ORIENTED WITH LATCH DOWN

PINOUT	
1	LL
2	UL
3	SHLD
4	UR
5	LR

UNITS INCHES [MM]

TOLERANCES UNLESS OTHERWISE SPECIFIED

.X ±  
 .XX ±.03 [.76]  
 .XXX ±.015 [.38]  
 ANGLES ±1°



DO NOT SCALE DRAWING

SCALE 1 = 1



3M TOUCH SYSTEMS  
 METHUEN, MA  
 USA  
 © COPYRIGHT 2004  
 THIS DOCUMENT IS COPYRIGHTED PROPERTY OF THE 3M COMPANY AND MAY NOT BE REPRODUCED WITHOUT 3M WRITTEN PERMISSION OR USED OR DISCLOSED FOR OTHER THAN 3M AUTHORIZED PURPOSES.

DRAWN K CROWLEY 08/05

P	REVISED PER CO 036265	4/13	SEB
N	REVISED PER CO 036100	2/13	SEB
REV	CHANGE NOTICE	DATE	DRW

TITLE			
MARKETING DRAWING			
SCT32NN 17.54"			
CAD FORMAT	AUTOCAD	SHEET	1 OF 1
SIZE	C	DOCUMENT NO.	TSD-28165
REV	P		