



Chipsmall Limited consists of a professional team with an average of over 10 year of expertise in the distribution of electronic components. Based in Hongkong, we have already established firm and mutual-benefit business relationships with customers from,Europe,America and south Asia,supplying obsolete and hard-to-find components to meet their specific needs.

With the principle of "Quality Parts,Customers Priority,Honest Operation,and Considerate Service",our business mainly focus on the distribution of electronic components. Line cards we deal with include Microchip,ALPS,ROHM,Xilinx,Pulse,ON,Everlight and Freescale. Main products comprise IC,Modules,Potentiometer,IC Socket,Relay,Connector.Our parts cover such applications as commercial,industrial, and automotives areas.

We are looking forward to setting up business relationship with you and hope to provide you with the best service and solution. Let us make a better world for our industry!



## Contact us

Tel: +86-755-8981 8866 Fax: +86-755-8427 6832

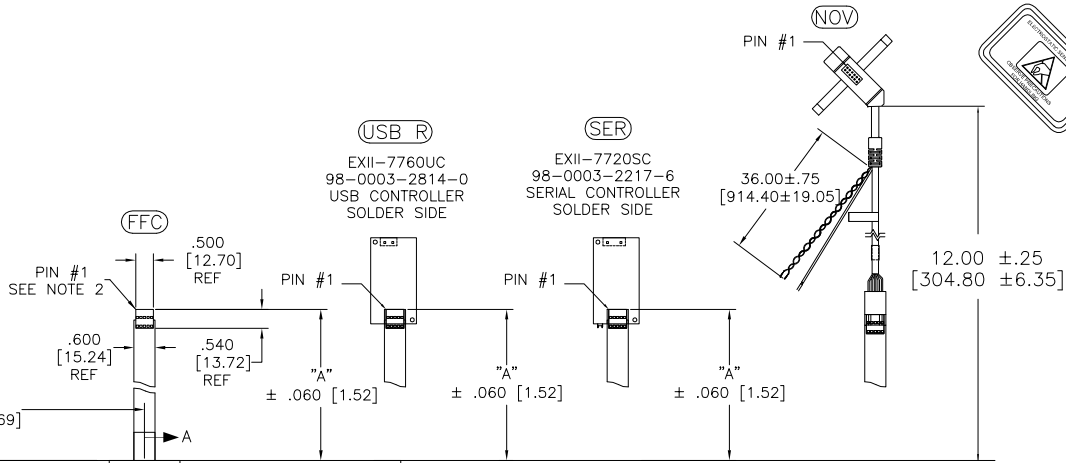
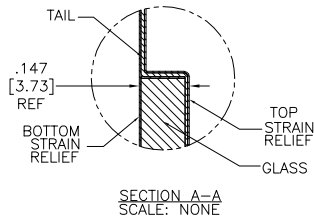
Email & Skype: info@chipsmall.com Web: www.chipsmall.com

Address: A1208, Overseas Decoration Building, #122 Zhenhua RD., Futian, Shenzhen, China

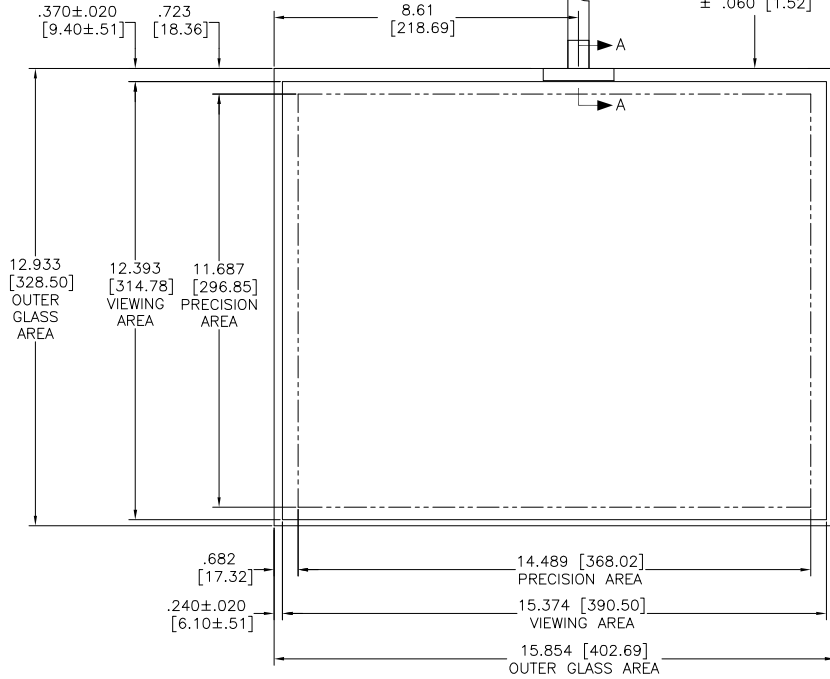


OGA DIAGONAL: 20.46 [519.68]  
 VA DIAGONAL: 19.75 [501.58]  
 PA DIAGONAL: 18.61 [472.82]

TOP LEVEL NUMBER	US NUMBER	TYPE	DIM "A" (TOTAL GLASS TO CONNECTOR)	A/G FINISH	PROD SPEC
17-8511-203	98-0003-2609-4	FFC	4.27" [108.46]	AG500	23655
17-8511-221	98-0003-2613-6	SER	4.27" [108.46]	AG500	23655
17-8511-206	98-0003-2611-0	NOV	SEE DWG	AG500	23655
17-8511-218	98-0003-3156-5	USB R	4.27" [108.46]	AG500	23655
17-8511-205	98-0003-2610-2	FFC	8.00" [203.20]	AG500	23655
17-8511-226	98-0003-3157-3	USB R	8.00" [203.20]	AG500	23655
17-8511-227	98-0003-2615-1	SER	8.00" [203.20]	AG500	23655



.147 ± .020 [3.73 ± .51]  
 TOTAL THICKNESS OF GLASS, CABLE AND STRAIN RELIEF



PINOUT	
1	LL
2	UL
3	SHLD
4	UR
5	LR

H	REVISED PER CO 036256	4/13	SB
G	REVISED PER CO 033533	2/12	SB
F	REVISED PER CO 033457	9/11	SB
REV	CHANGE NOTICE	DATE	DRW

UNITS INCHES [MM]

TOLERANCES UNLESS OTHERWISE SPECIFIED  
 .X ±  
 .XX ±.03 [.76]  
 .XXX ±.015 [.38]  
 ANGLES ±1°

THIRD ANGLE PROJECTION

DO NOT SCALE DRAWING

SCALE 1 = 1

**3M** 3M TOUCH SYSTEMS  
 METHUEN, MA  
 USA

© COPYRIGHT 2004  
 THIS DOCUMENT IS COPYRIGHTED PROPERTY OF THE 3M COMPANY AND MAY NOT BE REPRODUCED WITHOUT 3M WRITTEN PERMISSION OR USED OR DISCLOSED FOR OTHER THAN 3M AUTHORIZED PURPOSES.

DRAWN K CROWLEY 9/05

TITLE

MARKETING DRAWING  
 SCT32NN 19.75"

CAD FORMAT AUTOCAD SHEET 1 OF 1

SIZE C DOCUMENT NO. 28382-MKT REV H

- NOTES:
1. WEIGHT OF GLASS IN GRAMS: 1008 ± 10%
  2. NICOMATIC HOUSING P/N: OLO5  
 NICOMATIC RECEPTACLES (PINS) MATTE TIN PLATED P/N: 14106-12  
 HOUSING ORIENTED WITH LATCH DOWN