



Chipsmall Limited consists of a professional team with an average of over 10 year of expertise in the distribution of electronic components. Based in Hongkong, we have already established firm and mutual-benefit business relationships with customers from,Europe,America and south Asia,supplying obsolete and hard-to-find components to meet their specific needs.

With the principle of “Quality Parts,Customers Priority,Honest Operation,and Considerate Service”,our business mainly focus on the distribution of electronic components. Line cards we deal with include Microchip,ALPS,ROHM,Xilinx,Pulse,ON,Everlight and Freescale. Main products comprise IC,Modules,Potentiometer,IC Socket,Relay,Connector.Our parts cover such applications as commercial,industrial, and automotives areas.

We are looking forward to setting up business relationship with you and hope to provide you with the best service and solution. Let us make a better world for our industry!



Contact us

Tel: +86-755-8981 8866 Fax: +86-755-8427 6832

Email & Skype: info@chipsmall.com Web: www.chipsmall.com

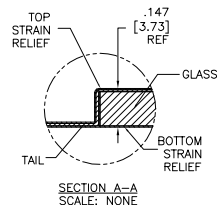
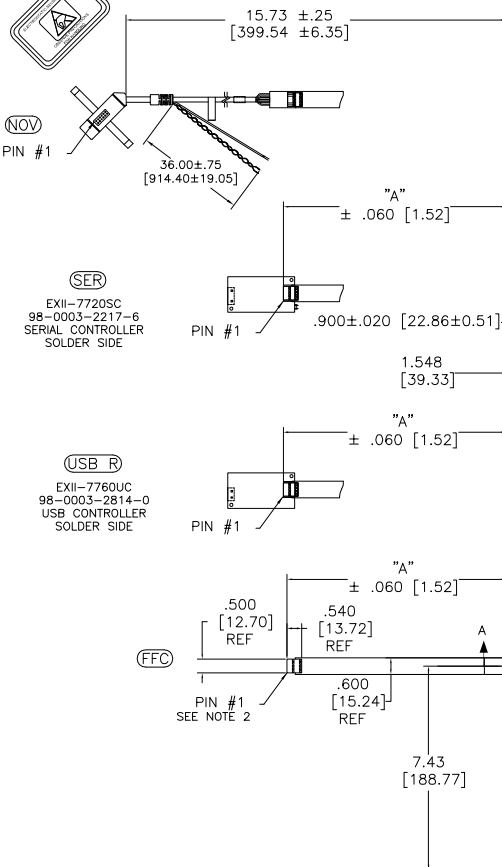
Address: A1208, Overseas Decoration Building, #122 Zhenhua RD., Futian, Shenzhen, China



OGA DIAGONAL: 28.63 [727.24]
 VA DIAGONAL: 26.28 [667.40]
 PA DIAGONAL: 24.80 [629.95]

TOP LEVEL NUMBER	US NUMBER	TYPE	DIM "A" (TOTAL GLASS TO CONNECTOR)	A/G FINISH	PROD SPEC
17-8931-205	98-0003-2673-0	FFC	8.00" [203.20]	AG500	23655
17-8931-227	98-0003-2204-4	SER	8.00" [203.20]	AG500	23655
17-8931-206	98-0003-2674-8	NOV	SEE DWG	AG500	23655
17-8931-226	98-0003-3028-6	USB R	8.00" [203.20]	AG500	23655
N/A	98-0003-3647-3	USB R	8.00" [203.20]	WC100	34523
N/A	98-1100-0124-9	USB R FW9	8.00" [203.20]	AG500	23655
N/A	98-1100-0098-5	FFC	8.00" [203.20]	WC100	34523
N/A	98-1100-0107-4	USB R FW9	8.00" [203.20]	WC100	34523

ESD CLAMHELL CASE IS USED WITH ALL NOV, USB AND SER TERMINATIONS.



.147±.020 [3.73±.51]
 TOTAL THICKNESS
 OF GLASS, CABLE
 AND STRAIN RELIEF

NOTES:

- WEIGHT OF GLASS IN GRAMS: 1788±10%
- NICOMATIC HOUSING P/N: OLOS
 NICOMATIC RECEPTACLES (PINS) MATTE TIN PLATED P/N: 14106-12
 HOUSING ORIENTED WITH LATCH DOWN

PINOUT	
1	LR
2	LL
3	SHLD
4	UL
5	UR

UNIT	INCHES [MM]
.X	±TOL
.XX	±.03 [-.76]
.XXX	±.015 [-.38]
ANGLES	±1°

3M 3M TOUCH SYSTEMS
 WATSONVILLE, CA
 USA

©COPYRIGHT 2006
 THE COMPANY'S CORPORATE PROPERTY OF THE
 3M COMPANY AND MAY NOT BE REPRODUCED OR
 TRANSMITTED IN ANY FORM OR BY ANY MEANS
 WITHOUT THE WRITTEN PERMISSION OF 3M OR
 OTHERWISE FOR OTHER THAN 3M ADVERTISING
 PURPOSES.

DATE: MTD 5/23/06
 DRAWN BY: AUTOCAD
 SHEET: 1 OF 1
 TSD-31971

REV	REVISION	DATE	BY
J	REVISED PER CO 036265	4/13	SB
H	REVISED PER CO 036120	2/13	SB
REV	CHANGE NOTICE	DATE	BY

MARKETING DRAWING
 SCT32NN 26.28" W