



Chipsmall Limited consists of a professional team with an average of over 10 year of expertise in the distribution of electronic components. Based in Hongkong, we have already established firm and mutual-benefit business relationships with customers from,Europe,America and south Asia,supplying obsolete and hard-to-find components to meet their specific needs.

With the principle of “Quality Parts,Customers Priority,Honest Operation,and Considerate Service”,our business mainly focus on the distribution of electronic components. Line cards we deal with include Microchip,ALPS,ROHM,Xilinx,Pulse,ON,Everlight and Freescale. Main products comprise IC,Modules,Potentiometer,IC Socket,Relay,Connector.Our parts cover such applications as commercial,industrial, and automotives areas.

We are looking forward to setting up business relationship with you and hope to provide you with the best service and solution. Let us make a better world for our industry!



Contact us

Tel: +86-755-8981 8866 Fax: +86-755-8427 6832

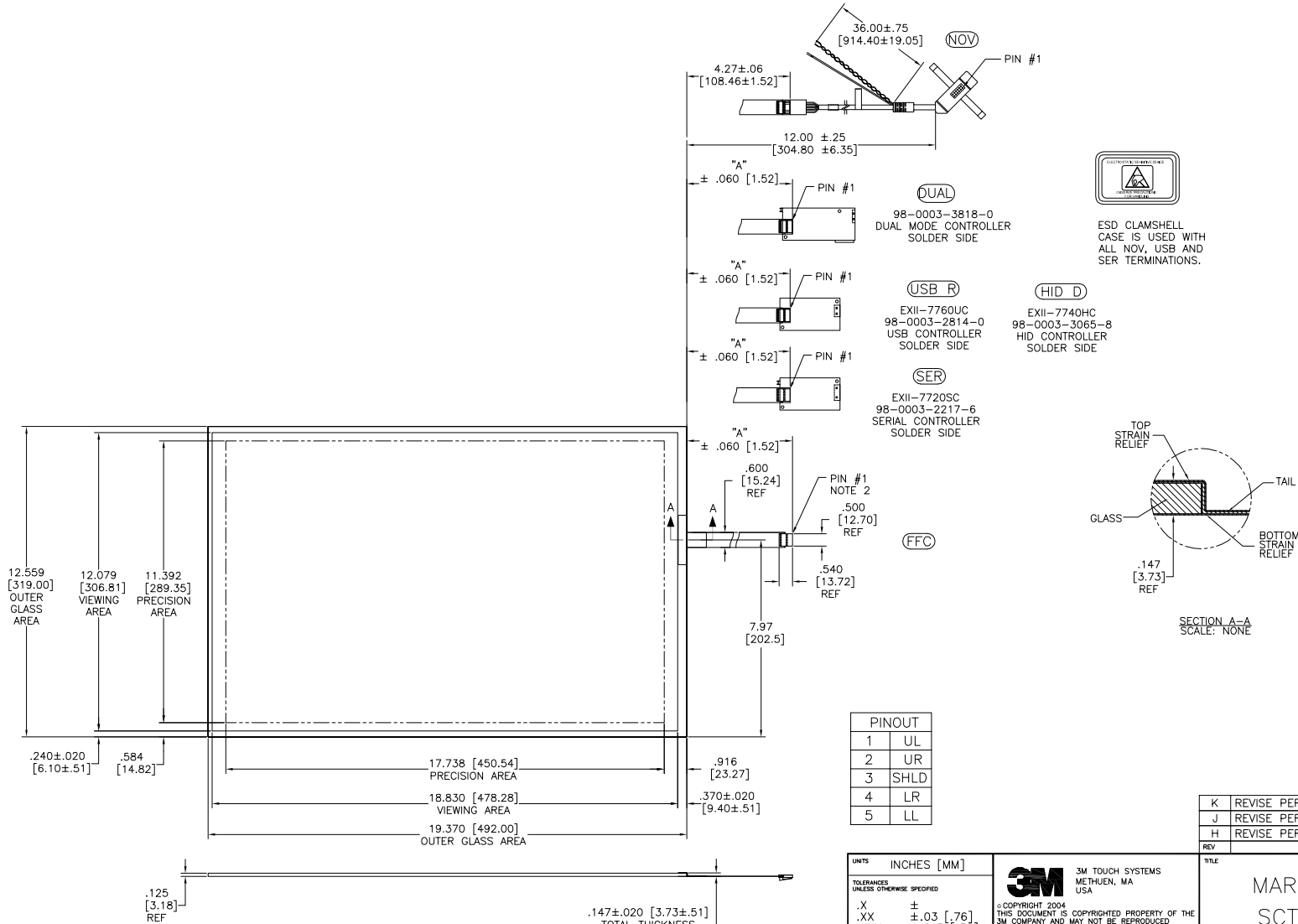
Email & Skype: info@chipsmall.com Web: www.chipsmall.com

Address: A1208, Overseas Decoration Building, #122 Zhenhua RD., Futian, Shenzhen, China



OGA DIAGONAL: 23.09 [586.4]
 VA DIAGONAL: 22.37 [568.2]
 PA DIAGONAL: 21.08 [535.5]

TOP LEVEL NUMBER	US NUMBER	TYPE	DIM "A" (TOTAL GLASS TO CONNECTOR)	A/G FINISH	PROD SPEC
17-9311-205	98-0003-2209-3	FFC	8.00" [203.20]	AG500	23655
17-9311-206	98-0003-2731-6	NOV	SEE DWG	AG500	23655
17-9311-227	98-0003-2734-0	SER	8.00" [203.20]	AG500	23655
17-9311-226	98-0003-3052-6	USB R	8.00" [203.20]	AG500	23655
N/A	98-0003-3652-3	HID D	8.00" [203.20]	AG500	23655
N/A	98-0003-3420-5	FFC	8.00" [203.20]	WC100	34523
N/A	98-0003-3418-9	SER	8.00" [203.20]	WC100	34523
N/A	98-0003-3419-7	USB R	8.00" [203.20]	WC100	34523
N/A	98-0003-3975-8	DUAL	8.00" [203.20]	AG500	23655



ESD CLAMSHELL CASE IS USED WITH ALL NOV, USB AND SER TERMINATIONS.

PINOUT	
1	UL
2	UR
3	SHLD
4	LR
5	LL

REV	REVISION	PER	CO	DATE	DRW
K	REVISE PER	CO	036256	4/13	SB
J	REVISE PER	CO	034069	1/12	SB
H	REVISE PER	CO	033640	10/11	SB

NOTES:

- WEIGHT OF GLASS IN GRAMS: 1196±10%
- NICOMATIC HOUSING P/N: OLOS
 NICOMATIC RECEPTACLES (PINS) MATTE TIN PLATED P/N: 14106-12
 HOUSING ORIENTED WITH LATCH DOWN

.147±.020 [3.73±.51]
 TOTAL THICKNESS OF GLASS, CABLE AND STRAIN RELIEF

UNITS	INCHES [MM]
TOLERANCES UNLESS OTHERWISE SPECIFIED	
.X	± .03 [.76]
.XX	± .015 [.38]
.XXX	± .01 [.25]
ANGLES	± 1°

3M 3M TOUCH SYSTEMS
 METHUEN, MA USA

© COPYRIGHT 2004
 THIS DOCUMENT IS COPYRIGHTED PROPERTY OF THE 3M COMPANY AND MAY NOT BE REPRODUCED WITHOUT 3M WRITTEN PERMISSION OR USED OR DISCLOSED FOR OTHER THAN 3M AUTHORIZED PURPOSES.

THIRD ANGLE PROJECTION

DO NOT SCALE DRAWING

SCALE 1 = 1

TITLE	
MARKETING DRAWING SCT32NN 22.37" W	
CAD FORMAT	AUTOCAD
SHEET	1 OF 1
SIZE	C
DOCUMENT NO.	34079-MKT
REV	K