



Chipsmall Limited consists of a professional team with an average of over 10 year of expertise in the distribution of electronic components. Based in Hongkong, we have already established firm and mutual-benefit business relationships with customers from,Europe,America and south Asia,supplying obsolete and hard-to-find components to meet their specific needs.

With the principle of “Quality Parts,Customers Priority,Honest Operation,and Considerate Service”,our business mainly focus on the distribution of electronic components. Line cards we deal with include Microchip,ALPS,ROHM,Xilinx,Pulse,ON,Everlight and Freescale. Main products comprise IC,Modules,Potentiometer,IC Socket,Relay,Connector.Our parts cover such applications as commercial,industrial, and automotives areas.

We are looking forward to setting up business relationship with you and hope to provide you with the best service and solution. Let us make a better world for our industry!



## Contact us

Tel: +86-755-8981 8866 Fax: +86-755-8427 6832

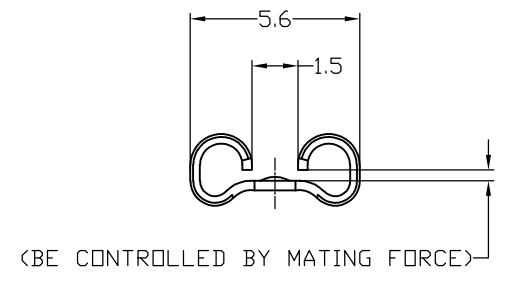
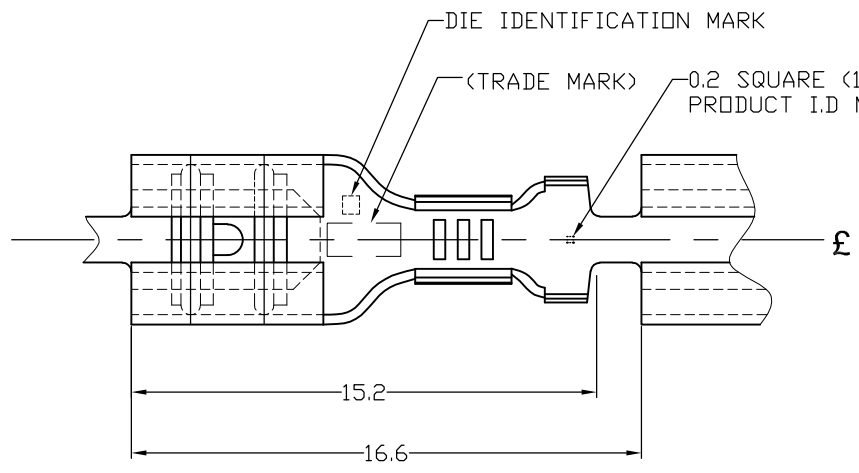
Email & Skype: info@chipsmall.com Web: www.chipsmall.com

Address: A1208, Overseas Decoration Building, #122 Zhenhua RD., Futian, Shenzhen, China



THIS DRAWING IS UNPUBLISHED. RELEASED FOR PUBLICATION  
 © COPYRIGHT - By - ALL RIGHTS RESERVED.

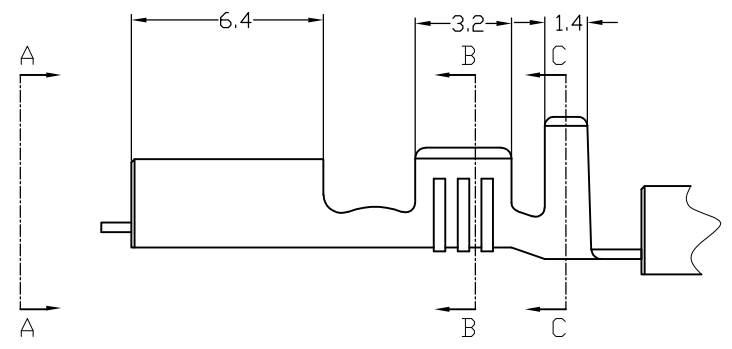
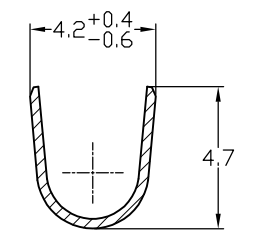
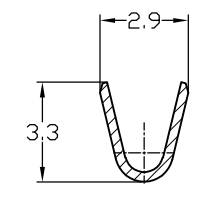
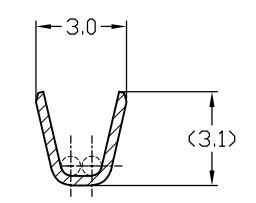
LOC	DIST	REVISIONS					
		P	LTR	DESCRIPTION	DATE	DWN	APVD
J	-	#	L1	REVISED PER ECO-11-005030	11MAR11	RK	HMR



NOTE:

- SEE PRODUCT SPEC FOR THE DETAIL OF MATING TAB

**△** STRESS RELIEVING  
 FINISH IS SUBJECT TO CHANGE BY THE TYPE OF STRESS RELIEVING PROCESS  
 \* INERT GAS FURNACE.....MATTE  
 \* ATMOSPHERIC FURNACE FOLLOWING BY ACID PICKLE...BRIGHT



MATING TAB THK.	PRODUCT SPEC NO.	L.P P/N	MATERIAL	FINISH	P/N
	108-5178	—#—	BRASS 0.32t	ELECTRICAL TIN PLATED WITHOUT STRESS RELIEVE	170037-9
	108-5178	—#—	BRASS 0.32t	ELECTRICAL TIN PLATED	170037-6
	108-5178	170038-5	PRE-TIN BRASS		170037-5
	108-5178	170038-4	PHOSBRO 0.32t	ELECTRICAL TIN PLATED	170037-4
	108-5178	170038-3	PHOSBRO 0.32t	—#— △	170037-3
	108-5178	170038-2	BRASS 0.32t	ELECTRICAL TIN PLATED	170037-2
0.51t	108-5008	170038-1	BRASS 0.32t	—#— △	170037-1

WIRE RANGE 0.5~1.42 mm <sup>f</sup> (AWG #20~#16)	THIS DRAWING IS A CONTROLLED DOCUMENT.		DWN LI HELEN 27AUG2004	TE Connectivity	187 SERIES FASTON RECEPTACLE
	INSULATION DIA 2.29~3.3	DIMENSIONS: 単位: 耗 mm	TOLERANCES UNLESS OTHERWISE SPECIFIED: 一般公差		
TOLERANCES ±0.4	MATERIAL 材料 SEE TABLE	FINISH 仕上 SEE TABLE	APVD Mikio Shindo 30 Aug. 04	NAME 名称	RESTRICTED TO
			PRODUCT SPEC 製品規格 108-5008	SIZE	CAGE CODE
			APPLICATION SPEC 取付適用規格 114-5084	DRAWING NO 番号 A300779	SCALE 尺度 4:1
			WEIGHT 0.35g/ea	170037	SHEET 1 OF 1
			CUSTOMER DRAWING	REV L1	