



Chipsmall Limited consists of a professional team with an average of over 10 year of expertise in the distribution of electronic components. Based in Hongkong, we have already established firm and mutual-benefit business relationships with customers from,Europe,America and south Asia,supplying obsolete and hard-to-find components to meet their specific needs.

With the principle of “Quality Parts,Customers Priority,Honest Operation,and Considerate Service”,our business mainly focus on the distribution of electronic components. Line cards we deal with include Microchip,ALPS,ROHM,Xilinx,Pulse,ON,Everlight and Freescale. Main products comprise IC,Modules,Potentiometer,IC Socket,Relay,Connector.Our parts cover such applications as commercial,industrial, and automotives areas.

We are looking forward to setting up business relationship with you and hope to provide you with the best service and solution. Let us make a better world for our industry!



## Contact us

Tel: +86-755-8981 8866 Fax: +86-755-8427 6832

Email & Skype: [info@chipsmall.com](mailto:info@chipsmall.com) Web: [www.chipsmall.com](http://www.chipsmall.com)

Address: A1208, Overseas Decoration Building, #122 Zhenhua RD., Futian, Shenzhen, China



4

3

2

1

THIS DRAWING IS UNPUBLISHED.

RELEASED FOR PUBLICATION

COPYRIGHT

ALL RIGHTS RESERVED.

LOC DIST  
J 01

REVISIONS

P LTR

DESCRIPTION

DATE

DWN

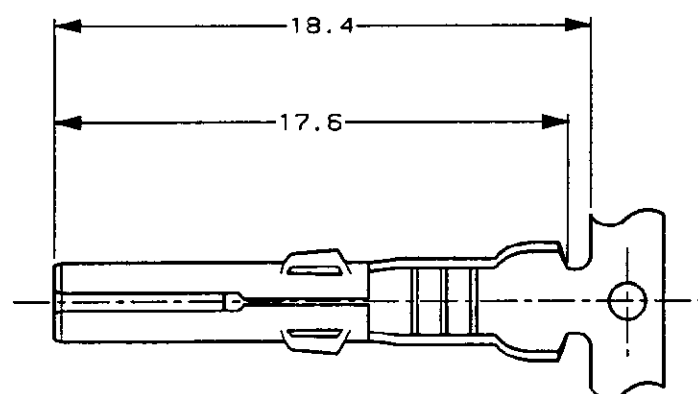
APVD

C1 REVISED PER ECO-11-005294

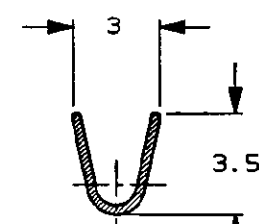
05APR11

RK

HMR



VIEW A



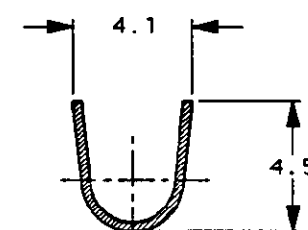
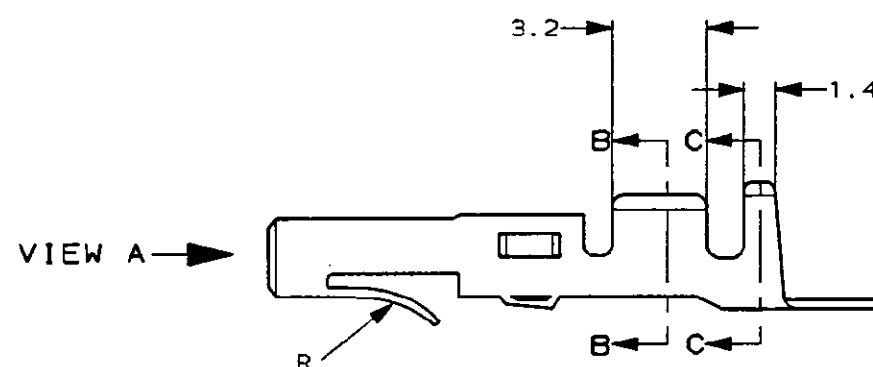
SECT B-B

注記

① 製品規格 108-5037

NOTE

① PRODUCT SPEC. 108-5037



SECT C-C

170120-4	リン青銅 0.32t	錫めっき済	170121-4
170120-1	黄銅 0.32t	錫めっき済	170121-1
型番	材料	仕上	LP型番

DIMENSIONS 単位: 概 mm		TOLERANCES UNLESS OTHERWISE SPECIFIED	
		一般公差	
		10% ±0.2	
		30% ±0.25	
MATERIAL 材料		FINISH 仕上	
SEE TABLE 表参照		SEE TABLE 表参照	
DOWNS Y. TANAKA 8/FEB/'74		CHK T. IMAIZUMI 8/FEB/'74	
APVD Y. SATO 12/FEB/'74		PRODUCT SPEC 製品規格	
APPLICATION SPEC 取付適用規格		WEIGHT	
CUSTOMER DRAWING			

WIRE RANGE  
包合電線断面積  
0.50-2.27mm<sup>2</sup>/AWG#20-#14INSULATION DIA  
被覆外径  
MAX 3.3mm  
最大 3.3mm

TE

TE Connectivity

MATE-N-LOK SOCKET  
メイテンロック ソケットSIZE  
A3CAGE CODE  
00779DRAWING NO  
番号  
C=

170120

SCALE  
尺度 4-1

SHEET 1 OF 1

REV C1

参考図面