



Chipsmall Limited consists of a professional team with an average of over 10 year of expertise in the distribution of electronic components. Based in Hongkong, we have already established firm and mutual-benefit business relationships with customers from,Europe,America and south Asia,supplying obsolete and hard-to-find components to meet their specific needs.

With the principle of “Quality Parts,Customers Priority,Honest Operation,and Considerate Service”,our business mainly focus on the distribution of electronic components. Line cards we deal with include Microchip,ALPS,ROHM,Xilinx,Pulse,ON,Everlight and Freescale. Main products comprise IC,Modules,Potentiometer,IC Socket,Relay,Connector.Our parts cover such applications as commercial,industrial, and automotives areas.

We are looking forward to setting up business relationship with you and hope to provide you with the best service and solution. Let us make a better world for our industry!



Contact us

Tel: +86-755-8981 8866 Fax: +86-755-8427 6832

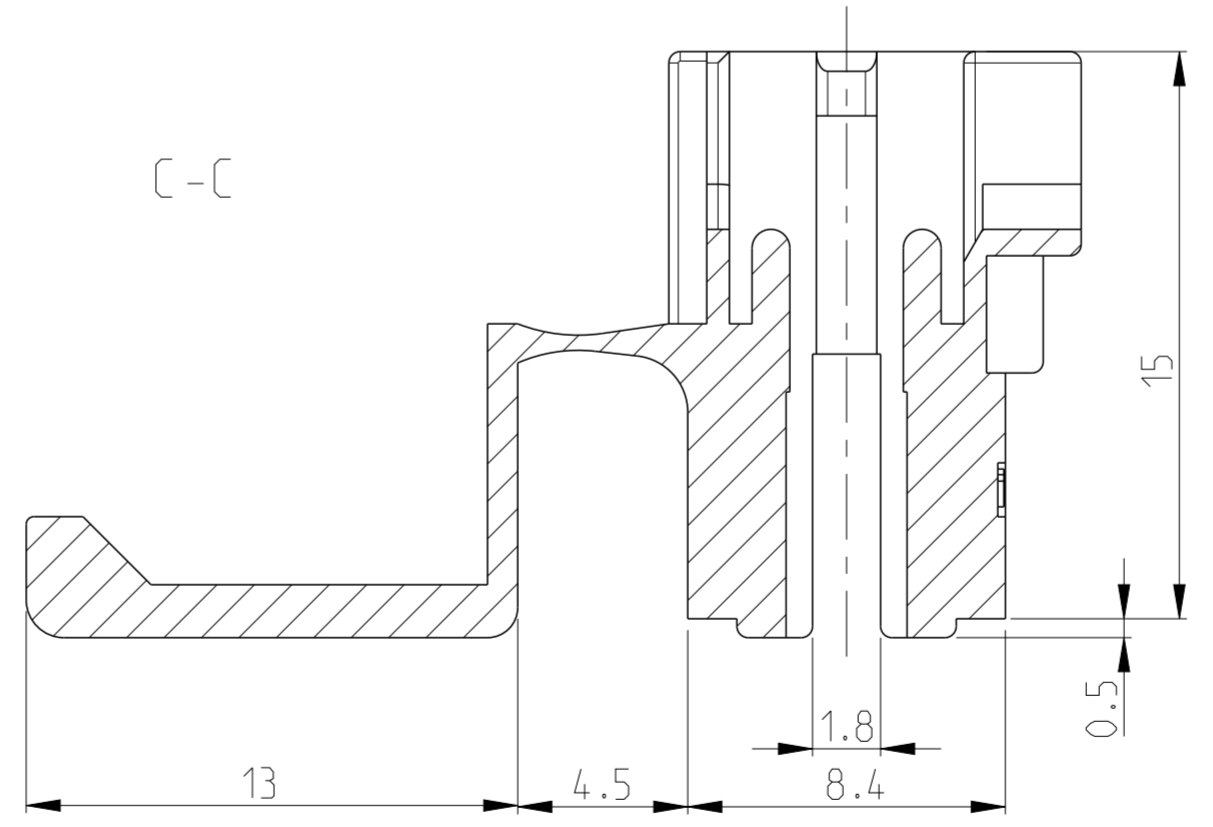
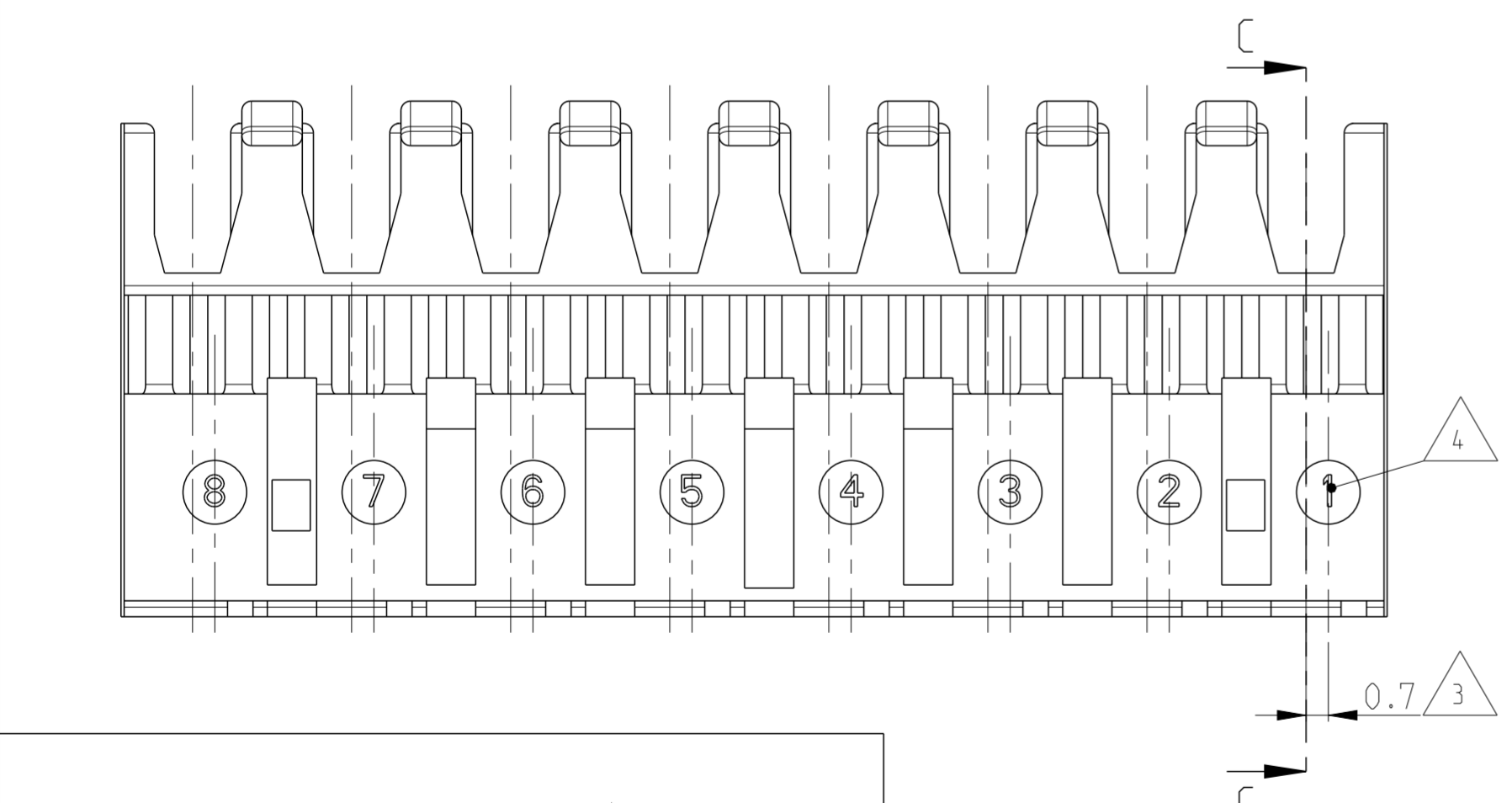
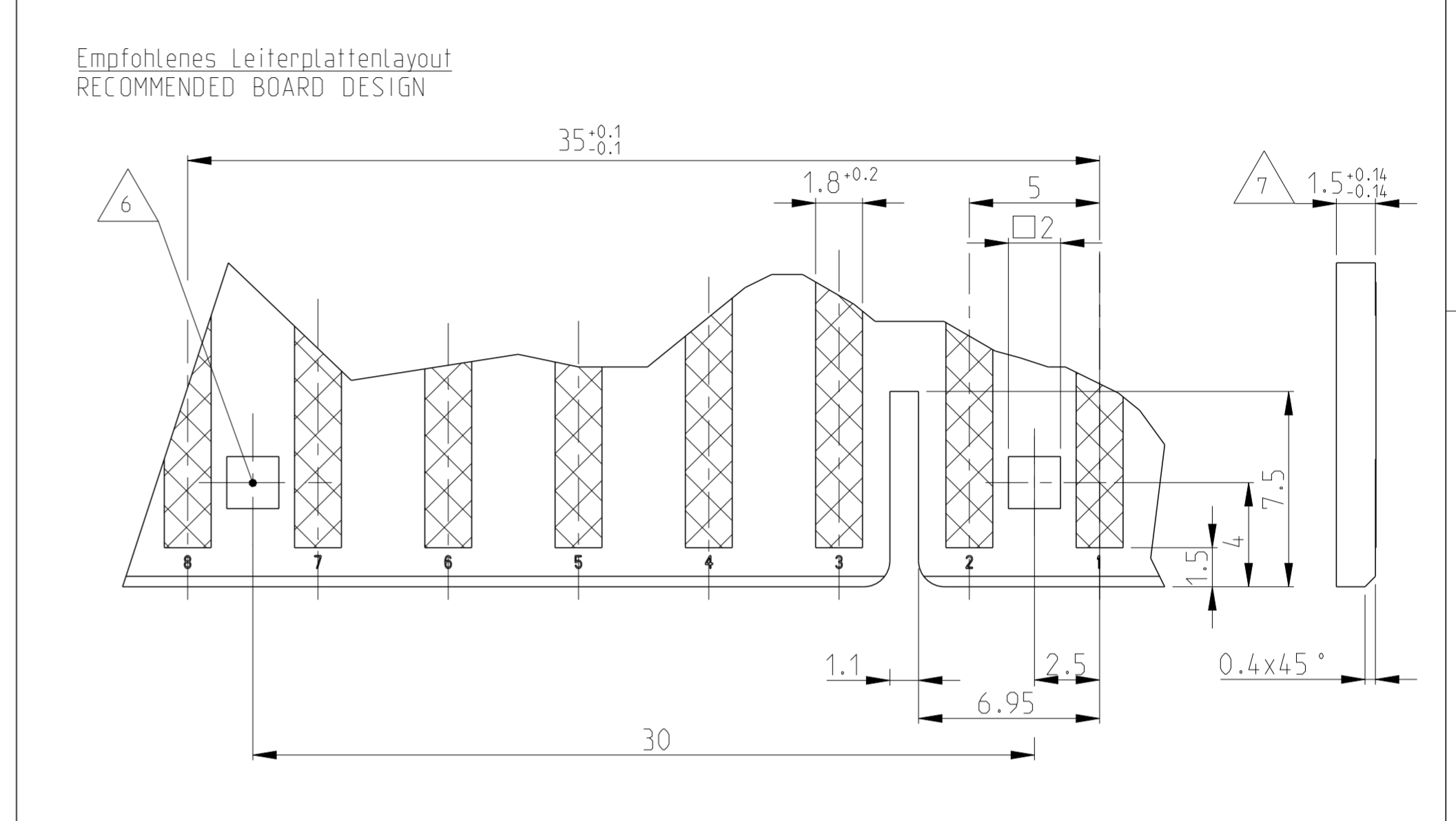
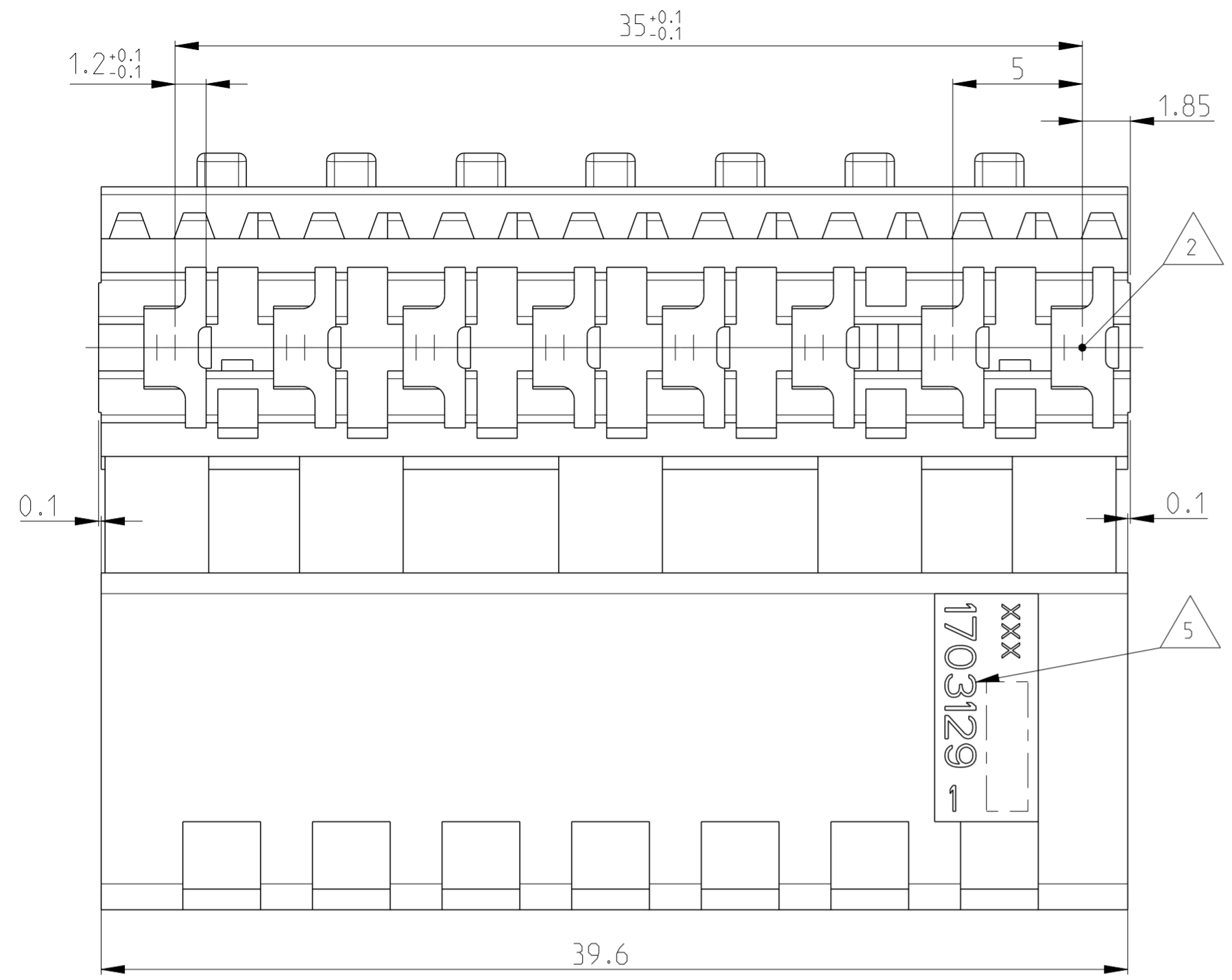
Email & Skype: info@chipsmall.com Web: www.chipsmall.com

Address: A1208, Overseas Decoration Building, #122 Zhenhua RD., Futian, Shenzhen, China

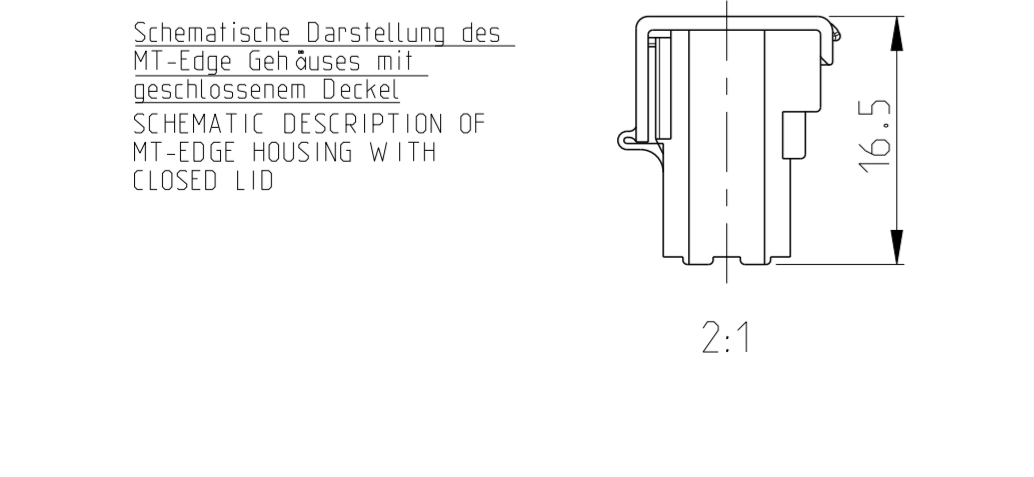


THIS DRAWING IS UNPUBLISHED. RELEASED FOR PUBLICATION 2003
 © COPYRIGHT 2003 ALL RIGHTS RESERVED.

LOC	DIST	REVISIONS			
P	LTR	DESCRIPTION	DATE	DWN	APVD
A1	-				
	C	ECR-10-007169	01APR2010	MKD	RRP
	C1	ECR-12-002845	12APR2012	MKD	RRP
	C2	ECR-13-010494	08JUL2013	MKD	RRP



- Bemerkungen**
NOTES
- 1 Massgebend ist der deutsche Text
ONLY THE GERMAN-LANGUAGE VERSION SHALL BE BINDING
 - 2 Lage des Kontaktpunktes auf der Leiterplatte; Abweichung ±0.4
POSITION OF CONTACT POINT ON BOARD; DEVIATION ±0.4
 - 3 Kontaktierung zur Drahtmitte um 0.7mm versetzt
CONTACTING 0.7mm DISPLACED TO WIRE CENTRELINE
 - 4 Kontaktkammer-Nr.
CONTACT CAVITY #
 - 5 Firmenlogo und Leergehäuse-Nr.
ARTWORK LOGO AND HOUSING # (NON LOADED)
 - 6 Vierkantloch 2x2 mm wahlweise Rastloch Ø2.5 mm
SQUARE HOLE 2x2 mm OPTIONAL LOCKING HOLE Ø2.5 mm
 - 7 Ausführung nach DIN 60249-2-4
BOARD DESIGN ACCORDING TO DIN 60249-2-4
 - 8 Crimp Kontakt-Nr.
Material: CuSn4 926770-1; 926917-1
CRIMP CONTACT # MATERIAL: CuSn4
 - 9 MATERIAL ACCORDING TO IEC-60335-1 (INCLUDING GWT 750 °C NO FLAME)



PART-NO.:	DESCRIPTION	COLOUR
1703129-5	MT-EDGE HOUSING	NATURE
1703129-1	MT-EDGE HOUSING	NATURE

THIS DRAWING IS A CONTROLLED DOCUMENT.

DIMENSIONS: mm	TOLERANCES UNLESS OTHERWISE SPECIFIED:	DWN MAHNKE, B. 27SEP2004	TE Connectivity 8 POS. MT-EDGE HOUSING RAST 5mm
	0 PLC ±0.2mm	CHK STREDAK, F. 20DEC2004	
	1 PLC ±0.2mm	APVD BLEICHER, M. 21DEC2004	
	2 PLC ±0.2mm	PRODUCT SPEC 108-18003	
	3 PLC ±0.2mm	APPLICATION SPEC 114-18002	SIZE CAGE CODE DRAWING NO RESTRICTED TO
MATERIAL PA6.6 UL94V-2	FINISH	WEIGHT 3.920 g	A2 C-1703129 -
CUSTOMER DRAWING			SCALE 5:1 SHEET 1 OF 1 REV C2