



Chipsmall Limited consists of a professional team with an average of over 10 year of expertise in the distribution of electronic components. Based in Hongkong, we have already established firm and mutual-benefit business relationships with customers from,Europe,America and south Asia,supplying obsolete and hard-to-find components to meet their specific needs.

With the principle of “Quality Parts,Customers Priority,Honest Operation,and Considerate Service”,our business mainly focus on the distribution of electronic components. Line cards we deal with include Microchip,ALPS,ROHM,Xilinx,Pulse,ON,Everlight and Freescale. Main products comprise IC,Modules,Potentiometer,IC Socket,Relay,Connector.Our parts cover such applications as commercial,industrial, and automotives areas.

We are looking forward to setting up business relationship with you and hope to provide you with the best service and solution. Let us make a better world for our industry!



Contact us

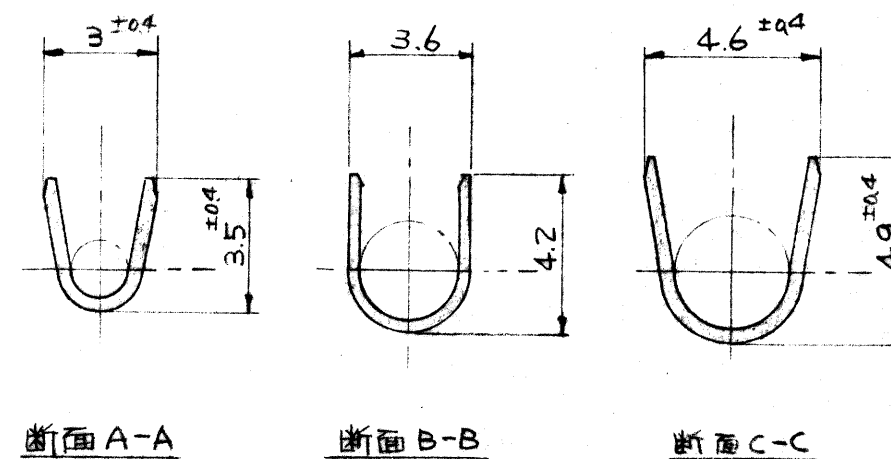
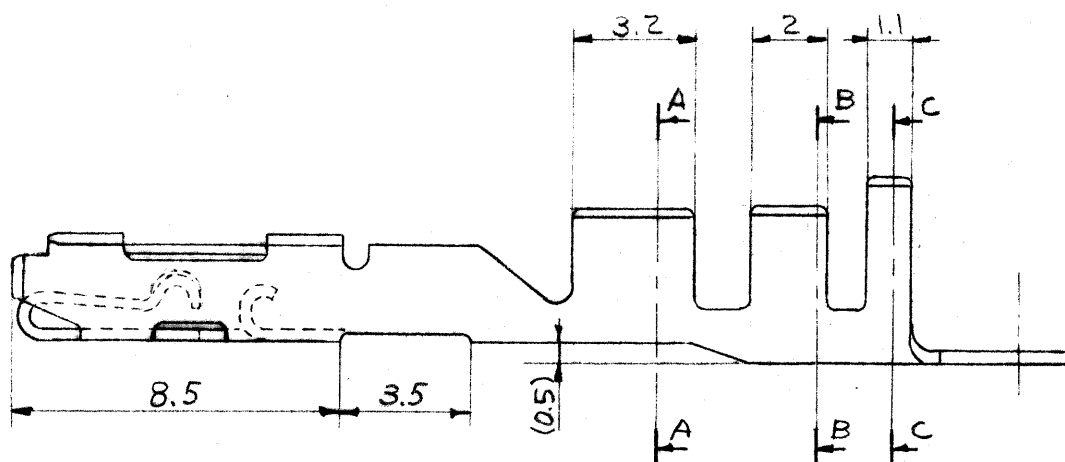
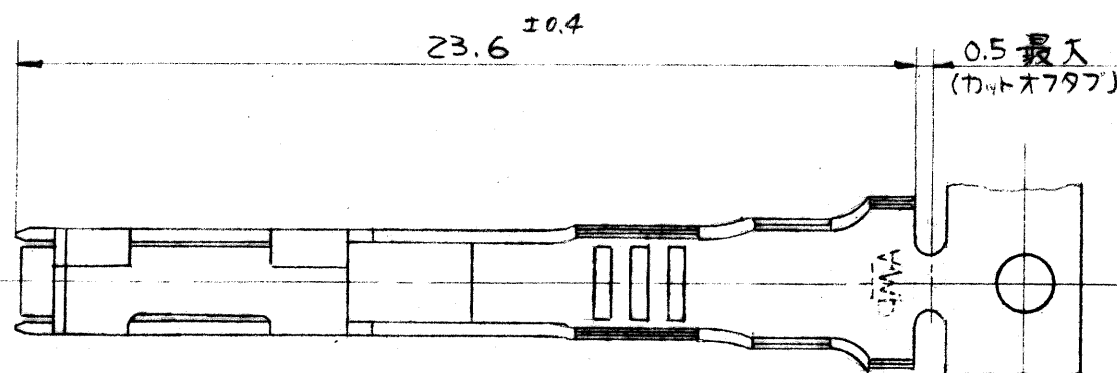
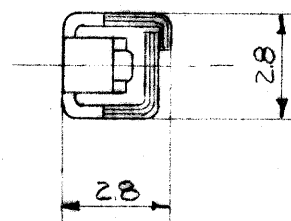
Tel: +86-755-8981 8866 Fax: +86-755-8427 6832

Email & Skype: info@chipsmall.com Web: www.chipsmall.com

Address: A1208, Overseas Decoration Building, #122 Zhenhua RD., Futian, Shenzhen, China



一般公差	
10以下	± 0.2
10を越え30以下	± 0.25
30を越え100以下	± 0.3
角 度	$\pm 3^{\circ}$



1. 使用するプラグハウジング型番 172315

A	変更	381-6176 (P-DWG Rev. A)	ym	9/18/81
O	作成	381-6083 (P-DWG Rev. O)	HS	9/18/81
LTR.	変更 (REVISION RECORD)		DR.	CHK. DATE

	170353-2	リセブタフル・コンタクト	リ:青銅 t0.32	部分金め	
	170353-1	リセブタフル・コンタクト	錫めき青銅 t0.32	—	
抱合電線断面積	型番	名称	材質	仕上	
0.5~1.25 mm ² (AWG #20-16)	材料 (MATERIAL)	<div style="border: 1px solid black; padding: 5px;"> 一般公差 <div style="display: flex; justify-content: space-between;"> <div style="border: 1px solid black; padding: 2px;">TOLERANCE</div> <div>±</div> </div> <div style="display: flex; justify-content: space-between;"> <div style="border: 1px solid black; padding: 2px;">EXCEPT</div> <div>±</div> </div> <div style="display: flex; justify-content: space-between;"> <div style="border: 1px solid black; padding: 2px;">AS NOTED</div> <div>±</div> </div> </div>	<div style="border: 1px solid black; padding: 5px; display: flex; align-items: center;"> <div> 日本エー・エム・ピー株式会社 TOKYO, JAPAN </div> </div>		
表参照			名称 (NAME) リセブタフル コンタクト パルス ロック コネクタ		
電線被覆外径	仕上 (FINISH)	DR. H. Sakamoto 4/19/61 CHK. <i>[Signature]</i> 4/19/61 DE. <i>[Signature]</i> 4/27/61 APP. <i>[Signature]</i> 4/27/61	SIZE B	LOC J	番号 (NO.) C-170353
2~2.9 mm	表参照		尺度 (SCALE) 5/1	REV. A	SHEET 1/1