



Chipsmall Limited consists of a professional team with an average of over 10 year of expertise in the distribution of electronic components. Based in Hongkong, we have already established firm and mutual-benefit business relationships with customers from,Europe,America and south Asia,supplying obsolete and hard-to-find components to meet their specific needs.

With the principle of "Quality Parts,Customers Priority,Honest Operation,and Considerate Service",our business mainly focus on the distribution of electronic components. Line cards we deal with include Microchip,ALPS,ROHM,Xilinx,Pulse,ON,Everlight and Freescale. Main products comprise IC,Modules,Potentiometer,IC Socket,Relay,Connector.Our parts cover such applications as commercial,industrial, and automotives areas.

We are looking forward to setting up business relationship with you and hope to provide you with the best service and solution. Let us make a better world for our industry!



Contact us

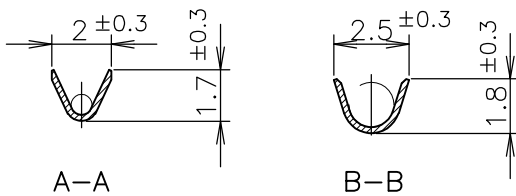
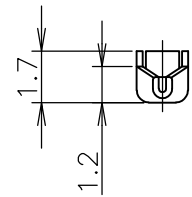
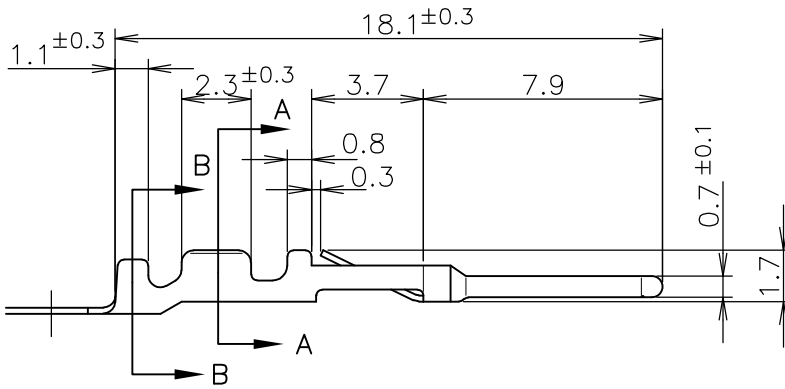
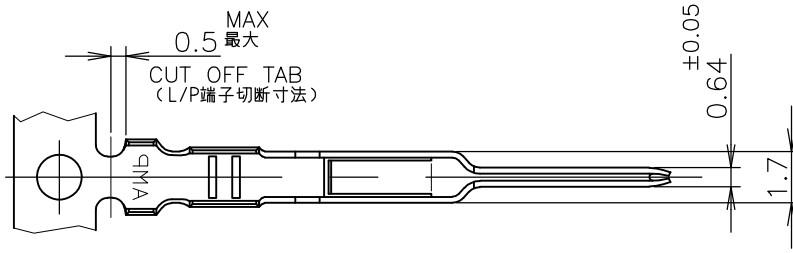
Tel: +86-755-8981 8866 Fax: +86-755-8427 6832

Email & Skype: info@chipsmall.com Web: www.chipsmall.com

Address: A1208, Overseas Decoration Building, #122 Zhenhua RD., Futian, Shenzhen, China



LOC J	DIST /	REVISIONS 変更			DATE 11MAR11	DWN RK	APVD HMR
		P	LTR	DESCRIPTION			
		C2	REVISED PER ECO-11-005030				



- | | |
|---|--|
| 1 使用ハウジング
172213-*: パネル取付型
172211-*: 宙吊り型 | 1 APPLICABLE HOUSINGS
172213-*: PANEL MOUNT TYPE
172211-*: FREE HANGING TYPE |
| 2 適用規格
製品規格: 108-5118
取付適用規格: 114-5035 | 2 SPECIFICATIONS
PRODUCT SPEC.: 108-5118
APPLICATION SPEC.: 114-5035 |
| 3 バラ状端子用手工工具 724685-1 | 3 HAND TOOL: 724685-1 |
| ④ めっき仕様: ニッケル下地、
接触ピン部のみ金めっき 0.38μ以上 | ④ FINISH: 0.00038 MIN GOLD PLT AT PIN AREA
OVER Ni PLT |

↑	-3	磷青銅0.2厚 ④	PHOS-BZ 0.2t ④	↑	-3
	-2	錫めっき済磷青銅0.2厚	PRE-TIN PLT PHOS-BZ 0.2t		-2
	170429-1	錫めっき済黄銅0.2厚	PRE-TIN PLT BRASS 0.2THK		170376-1
	バラ状端子 LOOSE PIECE	材質・仕上	MATERIAL & FINISH		型番 PART NO

WIRE RANGE 包含電線断面積	(AWG#20-#26) 0.14~0.52 mm ²	INSULATION DIA 被覆外径	1.1~1.9 mm
-----------------------	---	------------------------	------------

GENERAL TOLERANCE
一般公差

10 ≥ : ±0.2
30 ≥ > 10: ±0.25
100 ≥ > 30: ±0.3
ANGLES: ±3°

DIMENSIONS:
単位: 耗
mm

DWN TSUKAKOSHI 26MAY1980

MATERIAL 材料 表参照 SEE TABLE

FINISH 仕上 表参照 SEE TABLE

CHK N.ONOUE 30MAY1980

APVD 30MAY1980

PRODUCT SPEC 製品規格

APPLICATION SPEC 取付適用規格

WEIGHT



TE Connectivity

NAME 名称 EI シリーズ コネクタ ピンコンタクト (AWG#20-#26)
PIN CONTACT, AWG 20-26

EI SERIES CONNECTOR

SIZE	CAGE CODE	DRAWING NO 番号	RESTRICTED TO
A4	00779	C-170376	

CUSTOMER DRAWING

SCALE 尺度 4:1 SHEET 1 OF 1 REV C2

RELEASED FOR PUBLICATION MAY 1, 1980.

THIS DRAWING IS UNPUBLISHED.

ALL RIGHTS RESERVED.

© COPYRIGHT 1980 By -

0 PLC	± -
1 PLC	± -
2 PLC	± -
3 PLC	± -
4 PLC	± -
ANGLES	± -

