



Chipsmall Limited consists of a professional team with an average of over 10 year of expertise in the distribution of electronic components. Based in Hongkong, we have already established firm and mutual-benefit business relationships with customers from,Europe,America and south Asia,supplying obsolete and hard-to-find components to meet their specific needs.

With the principle of “Quality Parts,Customers Priority,Honest Operation,and Considerate Service”,our business mainly focus on the distribution of electronic components. Line cards we deal with include Microchip,ALPS,ROHM,Xilinx,Pulse,ON,Everlight and Freescale. Main products comprise IC,Modules,Potentiometer,IC Socket,Relay,Connector.Our parts cover such applications as commercial,industrial, and automotives areas.

We are looking forward to setting up business relationship with you and hope to provide you with the best service and solution. Let us make a better world for our industry!



Contact us

Tel: +86-755-8981 8866 Fax: +86-755-8427 6832

Email & Skype: info@chipsmall.com Web: www.chipsmall.com

Address: A1208, Overseas Decoration Building, #122 Zhenhua RD., Futian, Shenzhen, China



Inverted POWER COMBICON feed-through plugs 10.16 mm pitch DFK-IPC 16/...-ST(F)-10,16

In the inverted versions of the DFK-IPC 16 feed-through connectors, the screw connection on the device side is designed with female instead of male contacts. This gives a touch-proof device output. This prevents the user from coming into contact with the live device interiors.

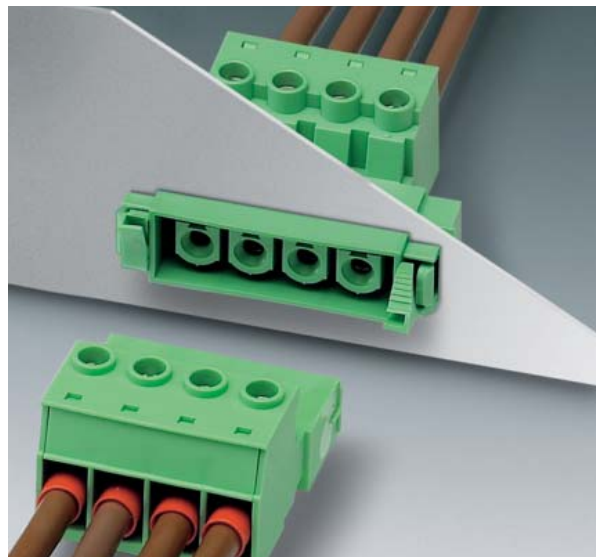
For fastening the feed-through plug connectors in the device housing, there are two possibilities:

- Either the fast snap-lock mechanism without tools or
- The conventional screw fastening.

Both options are included with the product.

The so-called PCB shield metal (in the SH version) provides three options for EMC shielding:

- Discharge of the shielding function to the PCB
- Discharge of the shielding function to the metal housing or
- Discharge through a solder or slip-on connection to the nearest shielding point.



COMBICON Select The COMBICON search engine with CAD downloading



COMBICON Select – the printed circuit board connection software supports your workflow from the PCB and housing layout to the ordering process with:

- Systematic and fast selection of products
- Universal Internet aided engineering with extensive CAD downloading
- Easy-to-use e-shopping functions.

select.phoenixcontact.com/combicon

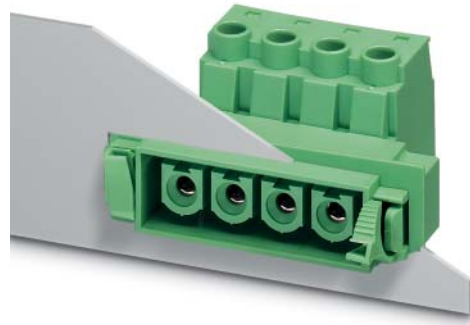
Note:
In compliance with DIN EN 61984, COMBICON plug connectors come without switching capacity. During designated use, they must not be plugged in or disconnected when carrying voltage or under load.



Fast snap-lock mechanism

Screw fastening

Inverted POWER COMBICON feed-through plugs DFK-IPC 16/...-ST-10,16 10.16 mm Pitch



Description	No. of pos.	Dim. a [mm]
Inverted POWER COMBICON plugs, 10.16 mm pitch, color: green	2	10.16
	3	20.32
	4	30.48
	5	40.64
	6	50.80
	7	60.96
	8	71.12
	9	81.28

Keying profile, is inserted into the slot on the plug and header, red insulating material

Screws, (DIN ISO 7049 screw ST 2,9 x 9,5), for fixing feed-through terminal blocks on the housing wall

Screwdriver, to actuate the terminal screws

Marker card, with 10 pcs., 10-section marker strips, white, self-adhesive, for 100 terminal blocks

Crimp pliers, for ferrules of up to 16 mm²

Technical data

Dimensions
Pitch [mm]

Technical data in accordance with IEC/ DIN VDE

Insulating material group	-
Surge voltage category / contamination class	- / -
Rated voltage	[V]
Rated surge voltage	[kV]
Nominal current / cross section	[A] / [mm ²]
Maximum load current / cross section	[A] / [mm ²]

Connection capacity

Solid / stranded / conductor sizes	[mm ²] / [mm ²] / AWG
Stranded with ferrule without / with plastic sleeve	[mm ²]

Multiple connection (2 conductors with same cross section)

Solid / stranded	[mm ²]
Stranded with ferrules without plastic sleeve	[mm ²]
Stranded with TWIN ferrule with plastic sleeve	[mm ²]

Stripping length [mm]

Internal cylindrical gage (IEC 60947-1) -

Screw thread -

Tightening torque [Nm]

Insulation material

Inflammability class acc. to UL 94

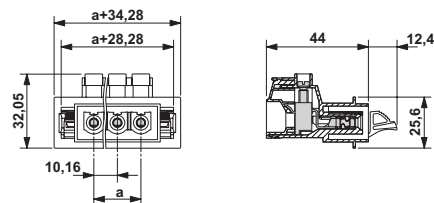
Approval data (UL/CUL and CSA)

Usegroup B	[V] / [A] / AWG
Usegroup C	[V] / [A] / AWG
Usegroup D	[V] / [A] / AWG

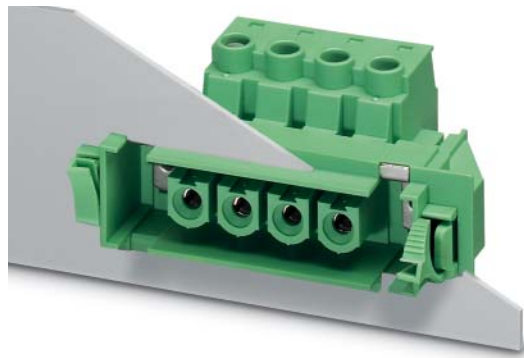
Type	Order No.	Pcs./Pkt.
DFK-IPC 16/ 2-ST-10,16	1703690	10
DFK-IPC 16/ 3-ST-10,16	1703700	10
DFK-IPC 16/ 4-ST-10,16	1703713	10
DFK-IPC 16/ 5-ST-10,16	1703726	10
DFK-IPC 16/ 6-ST-10,16	1703739	10
DFK-IPC 16/ 7-ST-10,16	1703742	10
DFK-IPC 16/ 8-ST-10,16	1703755	10
DFK-IPC 16/ 9-ST-10,16	1703768	10
CP-HCC 4	1600027	100
DFK-PC 16-SS	1705449	20
SZS 1,0 x 4,0	1205066	10
SK 10/5 (see COMBICON catalog)		
CRIMPFOX 16 S	1207983	1
see description 10.16		
	I	
	III/3	III/2
	1000	1000
	8	8
		II / 2
		1000
		6
		57 ¹⁾ / 10
		76 ²⁾ / 16
	0.75 - 16 / 0,75 - 16 / 18 - 6	
	0.5 - 16 ²⁾ / 0,5 - 16 ²⁾	
	0.75 - 6 / 0.75 - 6	
	0.5 - 4	
	0.5 - 6	
	14	
	A6	
	M4	
	1.5 - 1.7	
	PA	
	V0	
	600 / 55 / 20 - 6	
	600 / 55 / 20 - 6	
	on request	

¹⁾ Observe derating curve

²⁾ Only in connection with CRIMPFOX 16 S



Inverted POWER COMBICON feed-through plugs DFK-IPC 16/...-STF-10,16 10.16 mm Pitch



Description	No. of pos.	Dim. a [mm]
Inverted POWER COMBICON feed-through plugs, 10.16 mm pitch, color: green, with screw flange	2	10.16
	3	20.32
	4	30.48
	5	40.64
	6	50.80
	7	60.96
	8	71.12
	9	81.28

Keying profile, is inserted into the slot on the plug and header, red insulating material

Screws, (DIN ISO 7049 screw ST 2,9 x 9,5), for fixing feed-through terminal blocks on the housing wall

Screwdriver, to actuate the terminal screws

Marker card, with 10 pcs., 10-section marker strips, white, self-adhesive, for 100 terminal blocks

Crimp pliers, for ferrules of up to 16 mm²

Technical data

Dimensions
Pitch [mm]

Technical data in accordance with IEC/ DIN VDE

Insulating material group	-
Surge voltage category / contamination class	- / -
Rated voltage	[V]
Rated surge voltage	[kV]
Nominal current / cross section	[A] / [mm ²]
Maximum load current / cross section	[A] / [mm ²]

Connection capacity

Solid / stranded / conductor sizes	[mm ²] / [mm ²] / AWG
Stranded with ferrule without / with plastic sleeve	[mm ²]

Multiple connection (2 conductors with same cross section)

Solid / stranded	[mm ²]
Stranded with ferrules without plastic sleeve	[mm ²]
Stranded with TWIN ferrule with plastic sleeve	[mm ²]

Stripping length [mm]

Internal cylindrical gage (IEC 60947-1) -

Screw thread -

Tightening torque [Nm]

Insulation material

Inflammability class acc. to UL 94

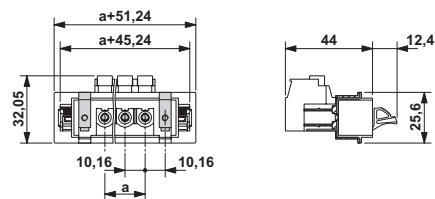
Approval data (UL/CUL and CSA)

Usegroup B	[V] / [A] / AWG
Usegroup C	[V] / [A] / AWG
Usegroup D	[V] / [A] / AWG

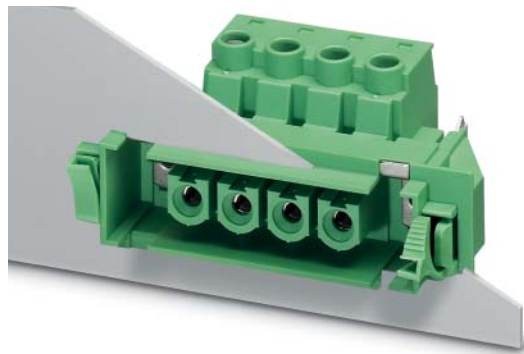
Type	Order No.	Pcs./Pkt.
DFK-IPC 16/ 2-STF-10,16	1703771	10
DFK-IPC 16/ 3-STF-10,16	1703784	10
DFK-IPC 16/ 4-STF-10,16	1703797	10
DFK-IPC 16/ 5-STF-10,16	1703807	10
DFK-IPC 16/ 6-STF-10,16	1703810	10
DFK-IPC 16/ 7-STF-10,16	1703823	10
DFK-IPC 16/ 8-STF-10,16	1703836	10
DFK-IPC 16/ 9-STF-10,16	1703849	10
CP-HCC 4	1600027	100
DFK-PC 16-SS	1705449	20
SZS 1,0 x 4,0	1205066	10
SK 10/5 (see COMBICON catalog)		
CRIMPFOX 16 S	1207983	1
see description		
10.16		
III / 3	I	II / 2
1000	1000	1000
8	8	6
	57 ¹⁾ / 10	
	76 ¹⁾ / 16	
0.75 - 16 / 0.75 - 16 / 18 - 6		
0.5 - 16 ²⁾ / 0.5 - 16 ²⁾		
0.75 - 6 / 0.75 - 6		
0.5 - 4		
0.5 - 6		
14		
A6		
M4		
1.5 - 1.7		
PA		
V0		
600 / 55 / 20 - 6		
600 / 55 / 20 - 6		
on request		

¹⁾ Observe derating curve

²⁾ Only in connection with CRIMPFOX 16 S



Inverted POWER COMBICON feed-through plugs DFK-IPC 16/...-STF-SH-10,16 10.16 mm Pitch



Description	No. of pos.	Dim. a [mm]
Inverted POWER COMBICON plugs, 10.16 mm pitch , color: green, shielded version, with screw flange	2	10.16
	3	20.32
	4	30.48
	5	40.64
	6	50.80
	7	60.96
	8	71.12
	9	81.28

Keying profile, is inserted into the slot on the plug and header, red insulating material

Screws, (DIN ISO 7049 screw ST 2,9 x 9,5), for fixing feed-through terminal blocks on the housing wall

Screwdriver, to actuate the terminal screws

Marker card, with 10 pcs., 10-section marker strips, white, self-adhesive, for 100 terminal blocks

Crimp pliers, for ferrules of up to 16 mm²

Technical data

Dimensions
Pitch [mm]

Technical data in accordance with IEC/ DIN VDE

Insulating material group	-
Surge voltage category / contamination class	- / -
Rated voltage	[V]
Rated surge voltage	[kV]
Nominal current / cross section	[A] / [mm ²]
Maximum load current / cross section	[A] / [mm ²]

Connection capacity

Solid / stranded / conductor sizes	[mm ²] / [mm ²] / AWG
Stranded with ferrule without / with plastic sleeve	[mm ²]

Multiple connection (2 conductors with same cross section)

Solid / stranded	[mm ²]
Stranded with ferrules without plastic sleeve	[mm ²]
Stranded with TWIN ferrule with plastic sleeve	[mm ²]

Stripping length [mm]

Internal cylindrical gage (IEC 60947-1) -

Screw thread -

Tightening torque [Nm]

Insulation material

Inflammability class acc. to UL 94

Approval data (UL/CUL and CSA)

Usegroup B	[V] / [A] / AWG
Usegroup C	[V] / [A] / AWG
Usegroup D	[V] / [A] / AWG

Type	Order No.	Pcs./Pkt.
DFK-IPC 16/ 2-STF-SH-10,16	1703933	10
DFK-IPC 16/ 3-STF-SH-10,16	1703946	10
DFK-IPC 16/ 4-STF-SH-10,16	1703959	10
DFK-IPC 16/ 5-STF-SH-10,16	1703962	10
DFK-IPC 16/ 6-STF-SH-10,16	1703975	10
DFK-IPC 16/ 7-STF-SH-10,16	1703988	10
DFK-IPC 16/ 8-STF-SH-10,16	1703991	10
DFK-IPC 16/ 9-STF-SH-10,16	1704000	10
CP-HCC 4	1600027	100
DFK-PC 16-SS	1705449	20
SZS 1,0 x 4,0	1205066	10
SK 10/5 (see COMBICON catalog)		
CRIMPFOX 16 S	1207983	1

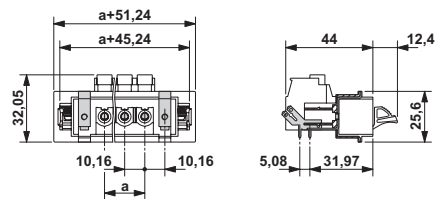
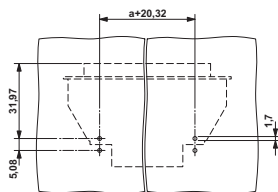
see description

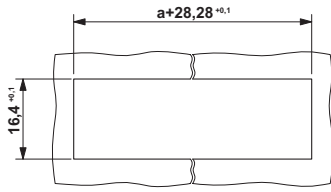
10.16

	I	II / 2
III / 3	III / 2	1000
1000	1000	6
8	8	
	57 ¹⁾ / 10	
	76 ²⁾ / 16	
	0.75 - 16 / 0.75 - 16 / 18 - 6	
	0.5 - 16 ²⁾ / 0.5 - 16 ²⁾	
	0.75 - 6 / 0.75 - 6	
	0.5 - 4	
	0.5 - 6	
	14	
	A6	
	M4	
	1.5 - 1.7	
	PA	
	V0	
	600 / 55 / 20 - 6	
	600 / 55 / 20 - 6	
	on request	

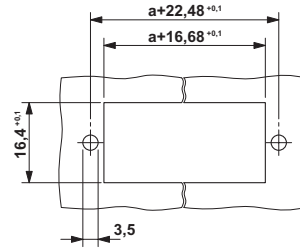
¹⁾ Observe derating curve

²⁾ Only in connection with CRIMPFOX 16 S

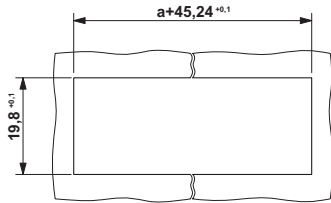




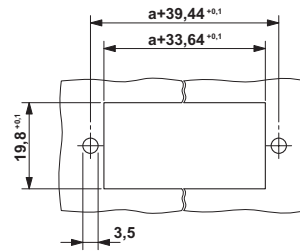
Sheet metal cutout for snap-lock mechanism for "ST" versions



Sheet metal cutout for screw connection for "ST" versions



Sheet metal cutout for snap-lock mechanism for "STF" versions



Sheet metal cutout for screw connection for "STF" versions

Derating curve
 Type: IPC 16/...-ST-10,16 with DFK-IPC 16/...-ST-10,16
 Connected conductor cross section = 16 mm²
 Reduction factor = 0.8
 Number of positions = see diagram

