



Chipsmall Limited consists of a professional team with an average of over 10 year of expertise in the distribution of electronic components. Based in Hongkong, we have already established firm and mutual-benefit business relationships with customers from,Europe,America and south Asia,supplying obsolete and hard-to-find components to meet their specific needs.

With the principle of "Quality Parts,Customers Priority,Honest Operation,and Considerate Service",our business mainly focus on the distribution of electronic components. Line cards we deal with include Microchip,ALPS,ROHM,Xilinx,Pulse,ON,Everlight and Freescale. Main products comprise IC,Modules,Potentiometer,IC Socket,Relay,Connector.Our parts cover such applications as commercial,industrial, and automotives areas.

We are looking forward to setting up business relationship with you and hope to provide you with the best service and solution. Let us make a better world for our industry!



Contact us

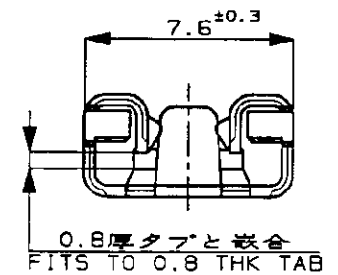
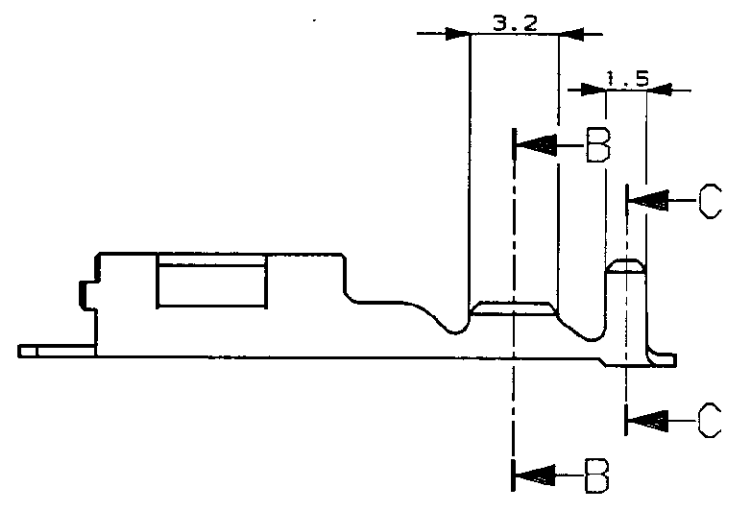
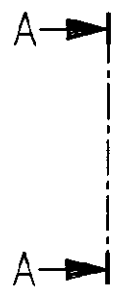
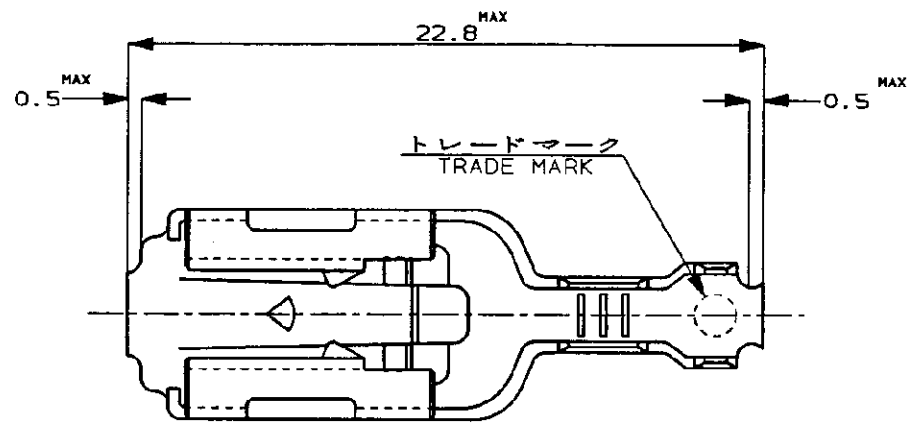
Tel: +86-755-8981 8866 Fax: +86-755-8427 6832

Email & Skype: info@chipsmall.com Web: www.chipsmall.com

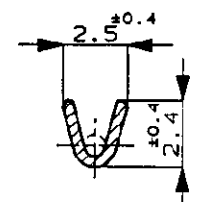
Address: A1208, Overseas Decoration Building, #122 Zhenhua RD., Futian, Shenzhen, China



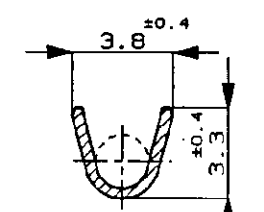
NUMBER C-170452
METRIC
三 角 錐 (3rd ANGLE PROJECTION)



矢視 A-A
VIEW



断面 B-B
SECT.



断面 C-C
SECT.

- 注 ;
1. 製品規格番号 ; 108-5150
 2. 取付通用規格番号 ; 114-5060
 3. 取扱説明書 ; IS-154J

- NOTES ;
1. PRODUCT SPEC No. ; 108-5150
 2. APPLICATION SPEC No. ; 114-5060
 3. CUSTOMER MANUAL No. ; IS-154J
- ⚠ OBSOLETE PARTS: OBSOLETE CIS STREAMLINING PER D.RENAUD/D.SINISI

⚠ OBSOLETE	C-170453-2	PRE-TIN BRASS ±0.41 錫めっき付き黄銅0.41t	C-170452-2
	C-170453-1	BRASS PLAIN ±0.41 黄銅めっきなし0.41t	C-170452-1
	パラ状端子 (LP)	材料 (MATERIAL)	型番 (P/N)



適合電線断面積 (WIRE RANGE) 0.3-0.56 mm ² (AWG22-20)		絶縁外径 (INSULATION DIA.) 1.5-2.4 mmφ	名称 (NAME) 250 SERIES AUTOMOTIVE POSITIVE LOCK RECEPTACLE 250 シリーズオートモーティブポジティブロックリセプタクル	
材料 (MATERIAL) 表参照		仕上 (FINISH) —	一般公差 (GENERAL TOLERANCE) 10mm以下 : ±0.2 10mm以上 30mm以下 : ±0.25 30mm以上 100mm以下 : ±0.3 角 度 : ±3°	LOC B J
DR. <i>K. yuasa</i> 8/24 '92		DE. <i>K. yuasa</i> 8/24 '92		番号 (No.) C-170452
CHK. <i>K. yuasa</i>		APP. <i>O. Tomita</i> 8/25 '92		尺度 (SCALE) 4-1
LTR 変更 (REVISION RECORD)		DR CHK DATE		REV. B2
				SHEET 1 OF 1

B2	REVISD PER ECO-11-005140	RK	HMR	31MAR11
LTR	変更 (REVISION RECORD)	DR	CHK	DATE

単位 : mm DIMENSIONS IN MM. DO NOT SCALE PRINT

PRINT DIST