



Chipsmall Limited consists of a professional team with an average of over 10 year of expertise in the distribution of electronic components. Based in Hongkong, we have already established firm and mutual-benefit business relationships with customers from,Europe,America and south Asia,supplying obsolete and hard-to-find components to meet their specific needs.

With the principle of “Quality Parts,Customers Priority,Honest Operation,and Considerate Service”,our business mainly focus on the distribution of electronic components. Line cards we deal with include Microchip,ALPS,ROHM,Xilinx,Pulse,ON,Everlight and Freescale. Main products comprise IC,Modules,Potentiometer,IC Socket,Relay,Connector.Our parts cover such applications as commercial,industrial, and automotives areas.

We are looking forward to setting up business relationship with you and hope to provide you with the best service and solution. Let us make a better world for our industry!



## Contact us

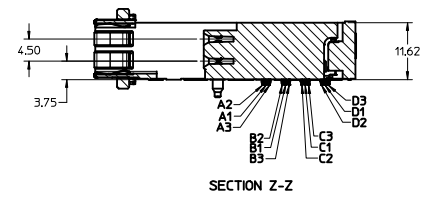
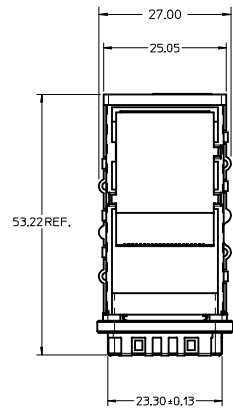
Tel: +86-755-8981 8866 Fax: +86-755-8427 6832

Email & Skype: info@chipsmall.com Web: www.chipsmall.com

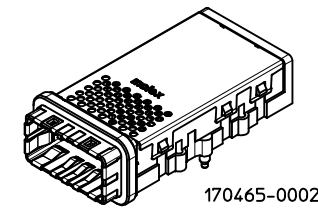
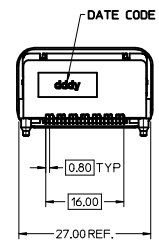
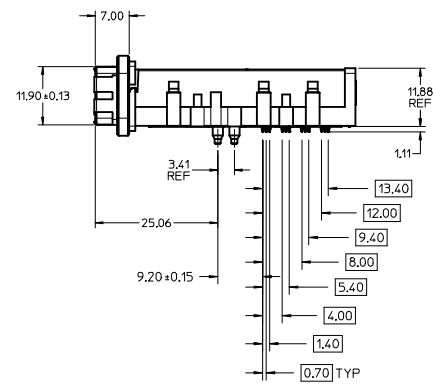
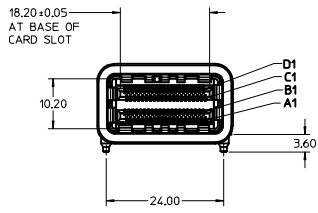
Address: A1208, Overseas Decoration Building, #122 Zhenhua RD., Futian, Shenzhen, China



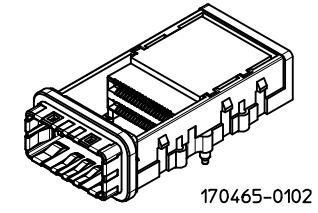
PART NUMBER	DESCRIPTION / OPTIONS	TOOLING STATUS
170465-0002	ASSEMBLY WITH COVER AND EMI GASKET	TOOLED
170465-0102	ASSEMBLY NO COVER AND EMI GASKET	TOOLED
170465-0003	ASSEMBLY WITH COVER AND EMI SPRINGS	TOOLED
170465-0103	ASSEMBLY NO COVER AND EMI SPRINGS	TOOLED



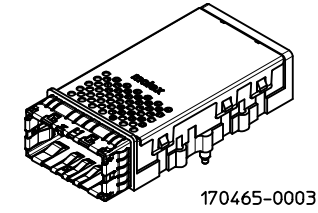
170465-0102  
SHOWN



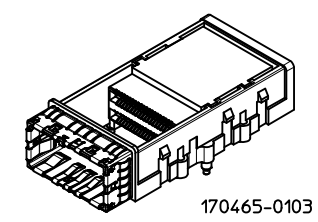
170465-0002



170465-0102



170465-0003

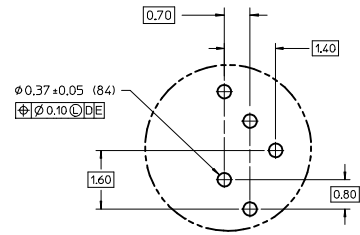
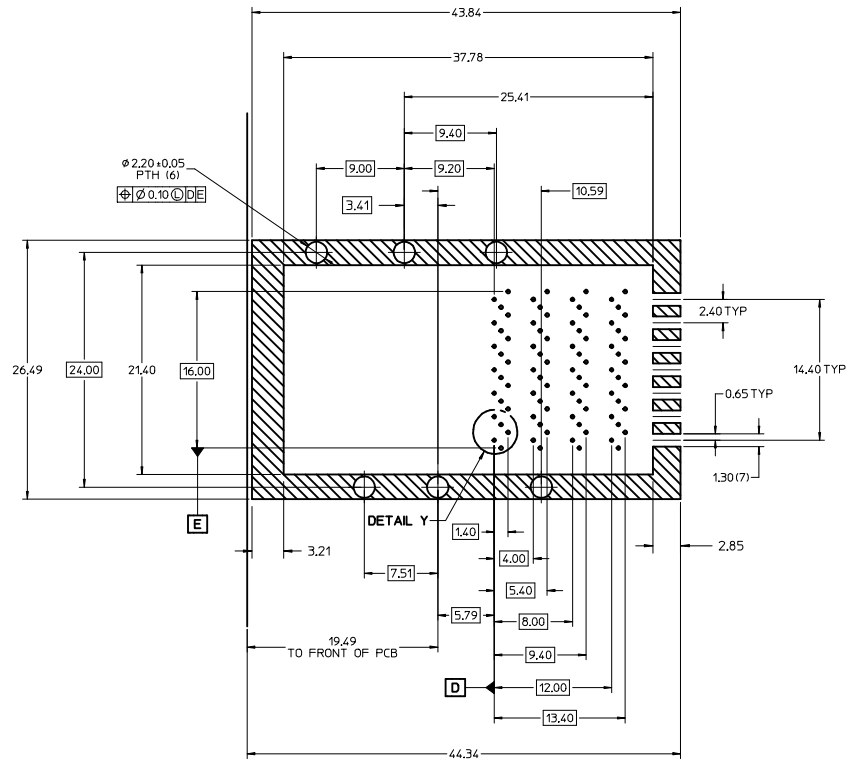


170465-0103

- NOTES:
- MATERIALS:  
CONNECTOR HOUSING: HIGH TEMPERATURE THERMOPLASTIC GLASS-FILLED, UL 94V-0  
EMI HOUSING: NICKEL PLATED DIE CAST ALLOY  
COVER: STAINLESS STEEL ALLOY  
EMI GASKET: CONDUCTIVE POLYMER  
EMI SPRINGS: COPPER ALLOY, TIN PLATED  
TERMINALS: COPPER ALLOY
  - TERMINAL PLATING:  
CONTACT AREA: 0.76mm MIN, GOLD OVER 2.54mm MIN, NICKEL  
TIN TAIL AREA: 0.76mm - 1.52mm TIN OVER 1.27mm MIN NICKEL
  - THIS CONNECTOR IS DESIGNED TO MATE WITH MOLEX CABLE SERIES INDICATED IN THE MOLEX PRODUCT SPEC, PS-170465-0001.
  - REFER TO ROUTING GUIDE AS-170465-0002 FOR PCB TRACE INFORMATION.
  - PACKAGING SPECIFICATION: TRAY PACK PER PK-170465-0001.
  - REFER TO AS-170465-0001 FOR THE APPLICATION SPECIFICATION.
  - MOUNTING HARDWARE REQUIRED: M2x0.4 CAP SCREWS (4)  
MOUNTING SCREW LENGTH: BOARD THICKNESS + 4mm MAX

ADD DIM SHT1 0L15 IEC NO: UCP2015-2915 DRAWN BY: CHYOMBRANKIS 2015/01/20 CHECKED BY: APPR:MBANKIS 2015/01/21 REV: H1	QUALITY SYMBOLS ∇=0 ∇=0 ∇=0	GENERAL TOLERANCES (UNLESS SPECIFIED) mm INCH		DIMENSION STYLE MM ONLY	SCALE 2:1	DESIGN UNITS METRIC	THIRD ANGLE PROJECTION	
		4 PLACES ± --- ± --- 3 PLACES ± --- ± --- 2 PLACES ± 0.25 ± --- 1 PLACE ± --- ± --- 0 PLACE ± --- ± ---	ANGULAR ±1/2° DRAFT WHERE APPLICABLE MUST REMAIN WITHIN DIMENSIONS	DRAWN BY: SBOGIEL CHECKED BY: GPRATT APPROVED BY:	DATE: 2014/03/27 DATE: 2014/07/02 DATE:	TITLE I-PASS PLUS CXP EF 84 CIRCUIT		MATERIAL NO. SEE CHART

THIS DRAWING CONTAINS INFORMATION THAT IS PROPRIETARY TO MOLEX INCORPORATED AND SHOULD NOT BE USED WITHOUT WRITTEN PERMISSION



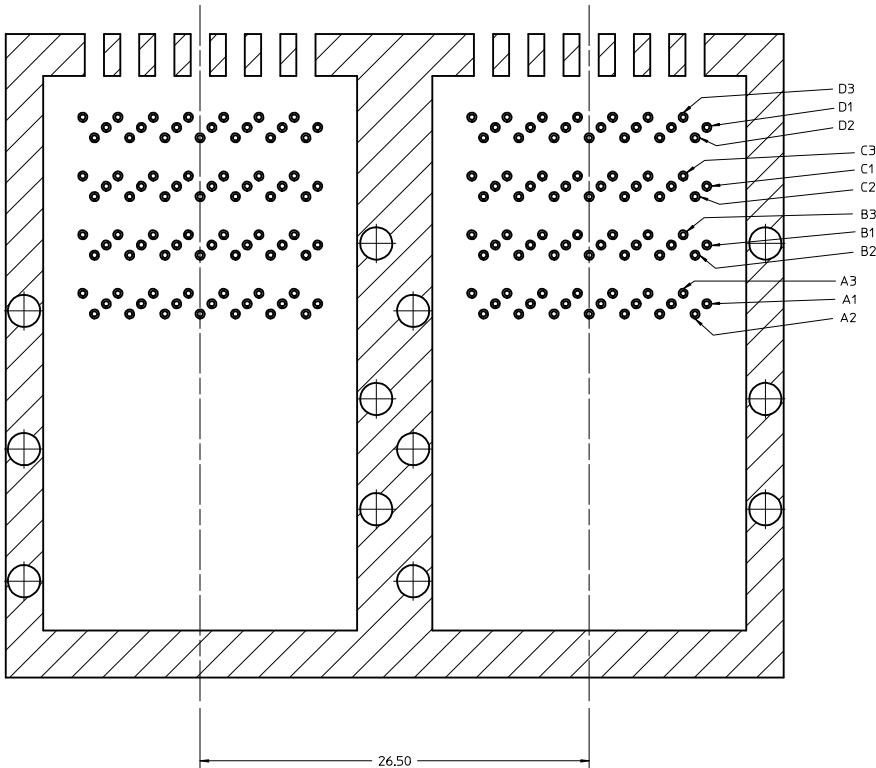
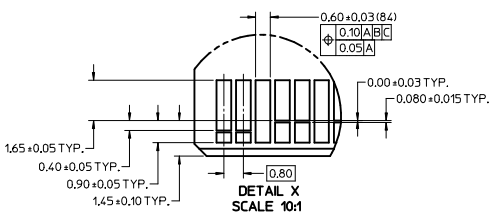
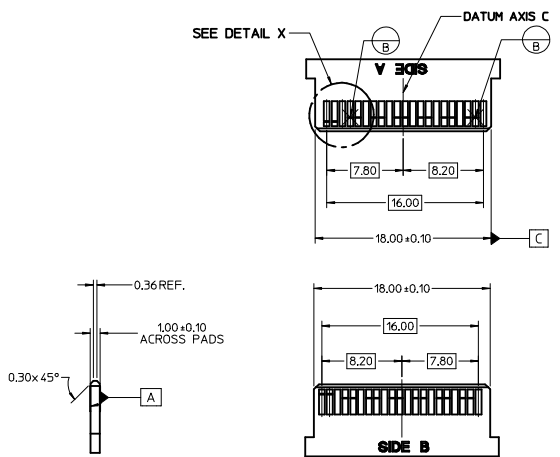
RECOMMENDED PCB LAYOUT  
COMPONENT SIDE SHOWN  
PCB THICKNESS: 1.57mm MIN.

NOTES:

- CROSS-HATCHED AREA TO BE CONDUCTIVE ON THE PCB.
- CROSS-HATCHED AREA MUST BE INCORPORATED IN THE FLAT ROCK PRESS-FIT TOOLING.
- REFER TO THE PLATING DETAIL OF THE COMPLIANT PIN HOLES IN THE APPLICATION SPEC AS-170465-0002 FOR THE DRILL SIZE AND ANNULAR RING FOR THE 0.37 $\phi$  FINISHED HOLE.
- MINIMUM RECOMMENDED SPACING: 26.50mm

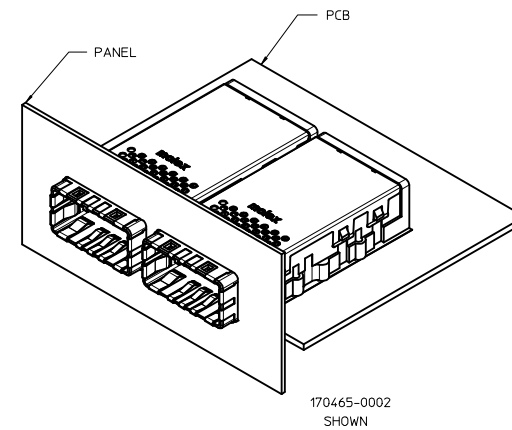
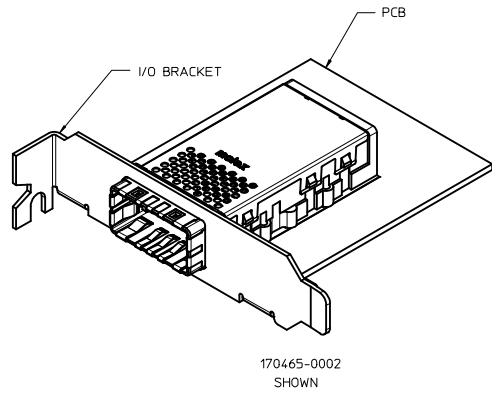
SEE SHEET 1 SEC NO: UCP2015-2915 DRAWN BY: GPRATT 2015/01/20 CHKD BY: BRANKIS 2015/01/20 APPR: BRANKIS 2015/01/21 REV: H1	QUALITY SYMBOLS	GENERAL TOLERANCES (UNLESS SPECIFIED)	DIMENSION STYLE	SCALE	DESIGN UNITS	THIRD ANGLE PROJECTION
	$\nabla=0$ $\nabla=0$ $\nabla=0$	mm INCH 4 PLACES +--- +--- 3 PLACES +--- +--- 2 PLACES +0.25 +--- 1 PLACE +--- +--- 0 PLACE +--- +---	MM ONLY	4:1	METRIC	DRAWN BY: SBGIEL DATE: 2014/03/27 CHECKED BY: GPRATT DATE: 2014/07/02 APPROVED BY: DATE:
DRAFT WHERE APPLICABLE MUST REMAIN WITHIN DIMENSIONS		ANGULAR $\pm 1/2^\circ$ SIZE D	MATERIAL NO. SEE CHART DOCUMENT NO. SD-170465-0001	TITLE: I-PASS PLUS CXP EF 84 CIRCUIT		SHEET NO. 2 OF 5

THIS DRAWING CONTAINS INFORMATION THAT IS PROPRIETARY TO MOLEX INCORPORATED AND SHOULD NOT BE USED WITHOUT WRITTEN PERMISSION

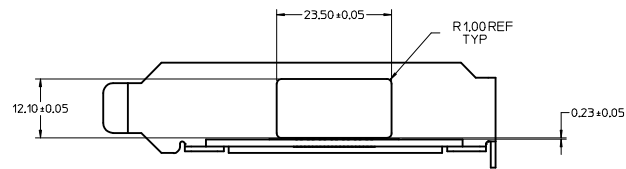


- NOTES:
- 0.03 MINIMUM KEEP OUT FOR SOLDER MASK AROUND ALL PADS
  - DATUM B TARGETS ARE DEFINED BY THE RESPECTIVE PAD CENTER LINES AND THE LEADING EDGE OF THE TARGET PADS

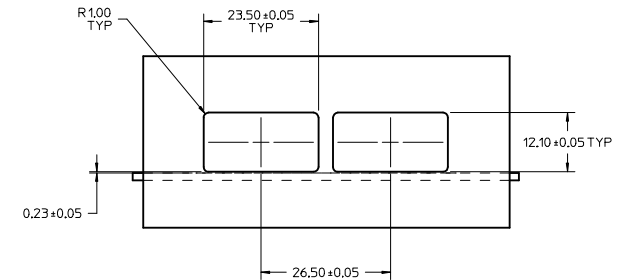
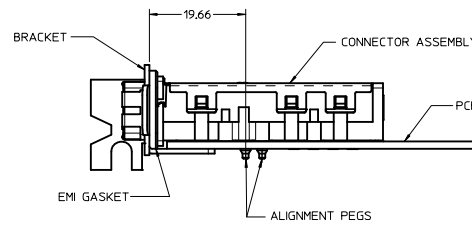
SEE SHEET 1 SEC NO: UCP2015-2915 DRAWING: GPRATT 2015/01/20 CHECKED: CHYKOBANKIS 2015/01/20 APPROVED: CHYKOBANKIS 2015/01/21	QUALITY SYMBOLS	GENERAL TOLERANCES (UNLESS SPECIFIED)	DIMENSION STYLE	SCALE	DESIGN UNITS	THIRD ANGLE PROJECTION
	∇=0 ∇=0 ∇=0	4 PLACES ± --- + --- 3 PLACES ± --- + --- 2 PLACES ± 0.25 + --- 1 PLACE ± --- + --- 0 PLACE ± --- + ---	mm    INCH + ---    + --- + ---    + --- + ---    + --- + ---    + --- + ---    + ---	MM ONLY DRAWN BY: SBGIEL    DATE: 2014/03/27 CHECKED BY:    DATE: GPRATT    2014/07/02 APPROVED BY:    DATE:	6:1	METRIC
	ANGULAR ±1/2° DRAFT WHERE APPLICABLE MUST REMAIN WITHIN DIMENSIONS		SEE CHART SIZE D			SHEET NO. 3 OF 5 THIS DRAWING CONTAINS INFORMATION THAT IS PROPRIETARY TO MOLEX INCORPORATED AND SHOULD NOT BE USED WITHOUT WRITTEN PERMISSION



FOR ASSEMBIES  
170465-0002 & 170465-0102



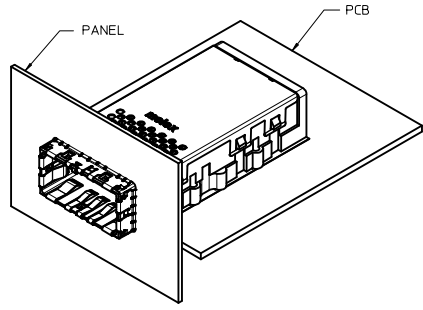
RECOMMENDED I/O BRACKET CUT-OUT  
(NOT SUPPLIED)



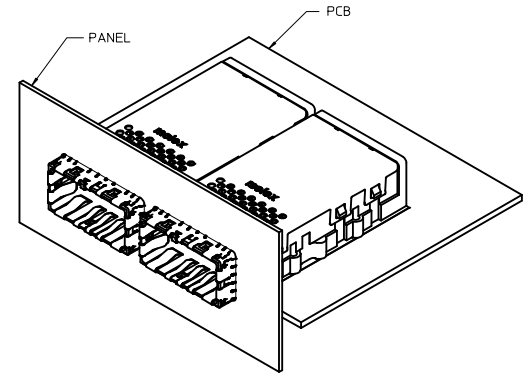
RECOMMENDED PANEL CUT-OUT  
(NOT SUPPLIED)

SEE SHEET 1 ELEC NO: UCP2015-2915 DRAWN BY: GPRATT 2015/01/20 CHECKED BY: CHYKORANKA 2015/01/20 APPROVED BY: APPR:MBANK IS 2015/01/21	QUALITY SYMBOLS ▽=0 ▽=0 ▽=0	GENERAL TOLERANCES (UNLESS SPECIFIED) <table border="1"> <thead> <tr> <th></th> <th>mm</th> <th>INCH</th> </tr> </thead> <tbody> <tr> <td>4 PLACES</td> <td>±---</td> <td>±---</td> </tr> <tr> <td>3 PLACES</td> <td>±---</td> <td>±---</td> </tr> <tr> <td>2 PLACES</td> <td>±0.25</td> <td>±---</td> </tr> <tr> <td>1 PLACE</td> <td>±---</td> <td>±---</td> </tr> <tr> <td>0 PLACE</td> <td>±---</td> <td>±---</td> </tr> </tbody> </table>		mm	INCH	4 PLACES	±---	±---	3 PLACES	±---	±---	2 PLACES	±0.25	±---	1 PLACE	±---	±---	0 PLACE	±---	±---	DIMENSION STYLE <b>MM ONLY</b>	SCALE <b>2:1</b>	DESIGN UNITS <b>METRIC</b>	THIRD ANGLE PROJECTION
		mm	INCH																					
4 PLACES	±---	±---																						
3 PLACES	±---	±---																						
2 PLACES	±0.25	±---																						
1 PLACE	±---	±---																						
0 PLACE	±---	±---																						
MATERIAL NO. <b>SEE CHART</b>	DOCUMENT NO. <b>SD-170465-0001</b>	SHEET NO. <b>4 OF 5</b>	TITLE <b>I-PASS PLUS CXP EF 84 CIRCUIT</b>																					

THIS DRAWING CONTAINS INFORMATION THAT IS PROPRIETARY TO MOLEX INCORPORATED AND SHOULD NOT BE USED WITHOUT WRITTEN PERMISSION

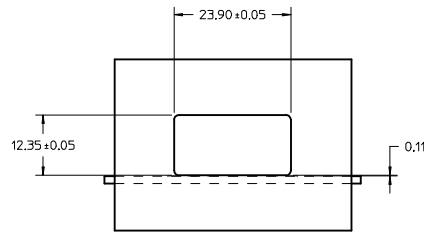


170465-0003  
SHOWN

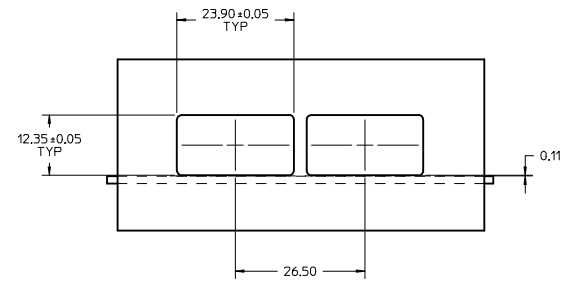
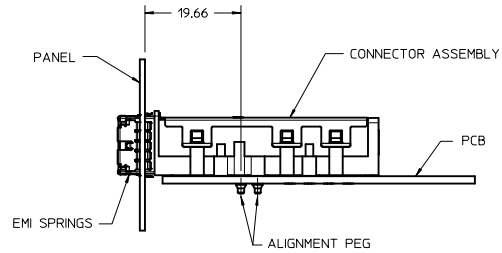


170465-0003  
SHOWN

FOR ASSEMBLIES  
170465-0003 & 170465-0103



RECOMMENDED SINGLE PANEL CUT-OUT  
(NOT SUPPLIED)



RECOMMENDED DUAL PANEL CUT-OUT  
(NOT SUPPLIED)

<b>SEE SHEET 1</b> IEC NO: UCP2015-2915 DRAWN BY: DRWNGPRATT 2015/01/20 CHECKED BY: CHYKHANKIS 2015/01/20 APPROVED BY: APPRMBANKIS 2015/01/21 REV DESCRIPTION	QUALITY SYMBOLS	GENERAL TOLERANCES (UNLESS SPECIFIED)	DIMENSION STYLE	SCALE	DESIGN UNITS	THIRD ANGLE PROJECTION
	▽=0	mm INCH	MM ONLY	2:1	METRIC	☉
	▽=0	4 PLACES ± --- ± --- 3 PLACES ± --- ± --- 2 PLACES ± 0.25 ± --- 1 PLACE ± --- ± --- 0 PLACE ± --- ± ---	DRAWN BY: SBGIEL DATE: 2014/03/27 CHECKED BY: GPRATT DATE: 2014/07/02 APPROVED BY: DATE:	TITLE	I-PASS PLUS CXP EF 84 CIRCUIT	
	▽=0	ANGULAR ±1/2° DRAFT WHERE APPLICABLE MUST REMAIN WITHIN DIMENSIONS	MATERIAL NO. SEE SHEET 1 SIZE D	DOCUMENT NO. SD-170465-0001	SHEET NO. 5 OF 5	