



Chipsmall Limited consists of a professional team with an average of over 10 year of expertise in the distribution of electronic components. Based in Hongkong, we have already established firm and mutual-benefit business relationships with customers from,Europe,America and south Asia,supplying obsolete and hard-to-find components to meet their specific needs.

With the principle of “Quality Parts,Customers Priority,Honest Operation,and Considerate Service”,our business mainly focus on the distribution of electronic components. Line cards we deal with include Microchip,ALPS,ROHM,Xilinx,Pulse,ON,Everlight and Freescale. Main products comprise IC,Modules,Potentiometer,IC Socket,Relay,Connector.Our parts cover such applications as commercial,industrial, and automotives areas.

We are looking forward to setting up business relationship with you and hope to provide you with the best service and solution. Let us make a better world for our industry!



## Contact us

Tel: +86-755-8981 8866 Fax: +86-755-8427 6832

Email & Skype: info@chipsmall.com Web: www.chipsmall.com

Address: A1208, Overseas Decoration Building, #122 Zhenhua RD., Futian, Shenzhen, China



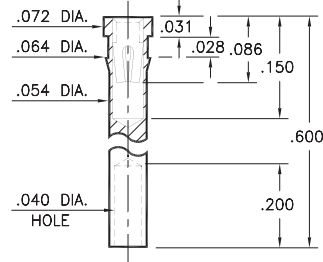
# PIN RECEPTACLES

FOR .015" - .025" DIAMETER PINS

## 1707

1707-0-19-XX-30-XX-10-0

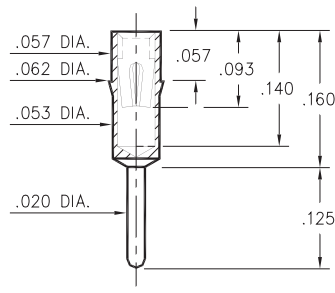
Press-fit in .061 mounting hole  
Wire Crimp Termination. Accepts wire sizes 22 AWG Max. / 24 AWG Min.



## 0240

0240-0-15-XX-30-XX-04-0

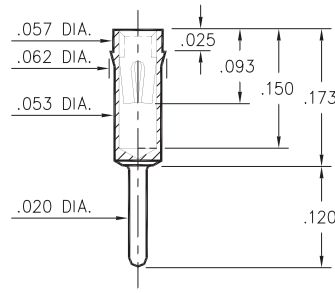
Press-fit in .059 mounting hole



## 0307

0307-0-15-XX-30-XX-04-0

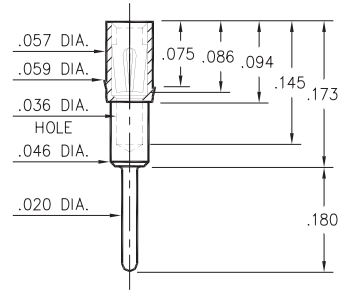
Press-fit in .059 mounting hole



## 1753

1753-0-15-XX-30-XX-04-0

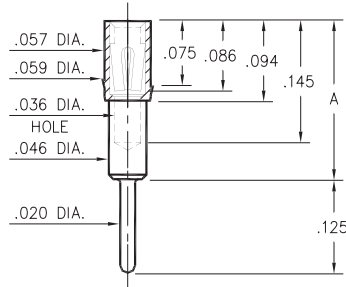
Press-fit in .057 mounting hole



## 1705/1706/1762

17XX-0-15-XX-3X-XX-04-0

Press-fit in .057 mounting hole

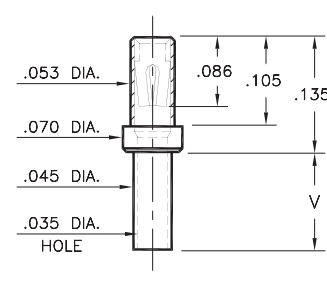


Basic Part Number	Height A
1705-0	.165
1706-0	.218
1762-0	.300

## 0672

0672-X-15-XX-30-XX-10-0

Swage mount in .049 hole

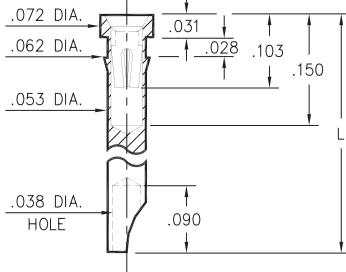


Basic Part Number	Board Thickness	Length V
0672-1	.031	.052
0672-2	.062	.084
0672-3	.094	.115
0672-4	.125	.146

## 1024/1104

1XX4-0-18-XX-30-XX-10-0

Press-fit in .059 mounting hole  
Accepts wire sizes up to .028" dia.

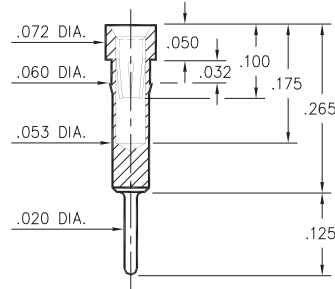


Basic Part Number	Length L
1024-0	.290
1104-0	.450

## 0498

0498-0-15-XX-35-XX-04-0

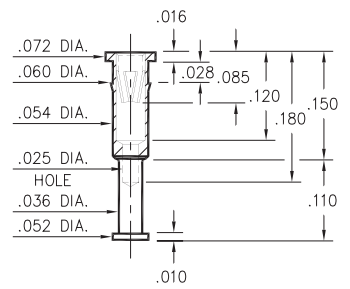
Press-fit in .057 mounting hole



## 8131

8131-0-15-XX-30-XX-10-0

Press-fit in .057 mounting hole



### SPECIFICATIONS:

Shell Material: Brass Alloy 360, 1/2 Hard

Contact Material: Beryllium Copper Alloy 172, HT

Dimensions: Inches

Tolerances On: Lengths: ±.005

Diameters: ±.002

Angles: ± 2°



ORDER CODE: **XXXX - X - 1X - XX - XX - XX - XX - 0**

BASIC PART #

SPECIFY SHELL FINISH:

- 01 200 μ" TIN/LEAD OVER NICKEL
- ◆ 80 200 μ" TIN OVER NICKEL (RoHS)
- ◆ 15 10 μ" GOLD OVER NICKEL (RoHS)

SPECIFY CONTACT FINISH:

- 02 100 μ" TIN/LEAD OVER NICKEL
- ◆ 84 100 μ" TIN OVER NICKEL (RoHS)
- ◆ 27 30 μ" GOLD OVER NICKEL (RoHS)

SELECT CONTACT:

#30 or #35 CONTACT (DATA ON PAGE 253 & 254)

(For alternate contact choices, see groups B and C on page 248)

