



Chipsmall Limited consists of a professional team with an average of over 10 year of expertise in the distribution of electronic components. Based in Hongkong, we have already established firm and mutual-benefit business relationships with customers from,Europe,America and south Asia,supplying obsolete and hard-to-find components to meet their specific needs.

With the principle of “Quality Parts,Customers Priority,Honest Operation,and Considerate Service”,our business mainly focus on the distribution of electronic components. Line cards we deal with include Microchip,ALPS,ROHM,Xilinx,Pulse,ON,Everlight and Freescale. Main products comprise IC,Modules,Potentiometer,IC Socket,Relay,Connector.Our parts cover such applications as commercial,industrial, and automotives areas.

We are looking forward to setting up business relationship with you and hope to provide you with the best service and solution. Let us make a better world for our industry!



## Contact us

Tel: +86-755-8981 8866 Fax: +86-755-8427 6832

Email & Skype: info@chipsmall.com Web: www.chipsmall.com

Address: A1208, Overseas Decoration Building, #122 Zhenhua RD., Futian, Shenzhen, China

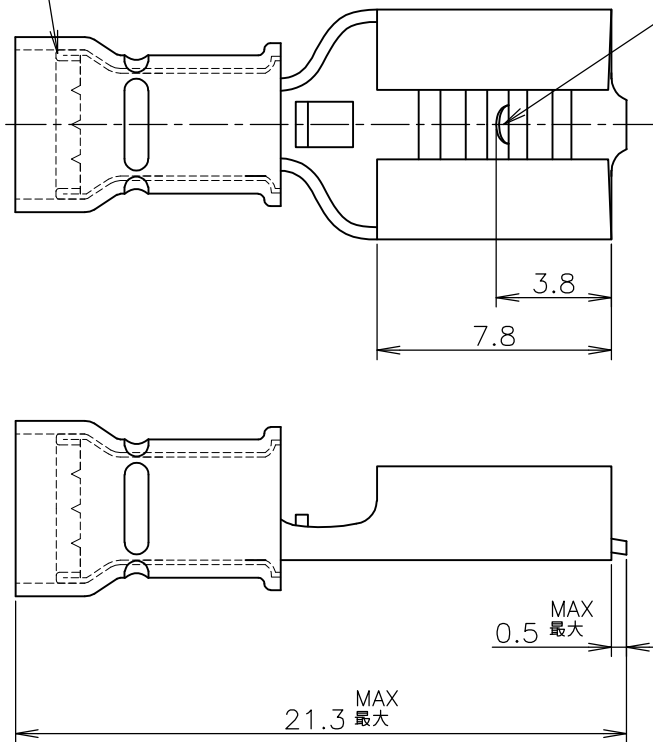


LOC J	DIST —	REVISIONS 変更			DATE	DWN	APVD
		P	LTR	DESCRIPTION			
			E	REDRAWN ECR-11-002811	09FEB2011	T.T	T.M

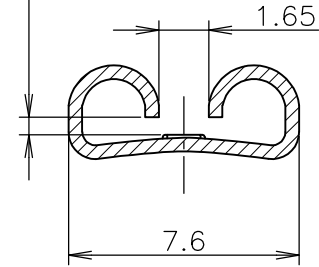
-1, -2; AS SHOWN

SLEEVE (BLUE)  
青色絶縁スリーブ

DIMPLE  
ディンプル



FIT FOR 250 SERIES FASTON TAB  
この寸法は嵌合力によって管理する



- 1 嵌合するファストンタブの詳細については#CP63-048Jの図面を参照のこと。
- 2 嵌合ゲージタブ: 60447-1
- 1 REFER TO THE CUSTOMER DRAWING #CP63-048J FOR DETAILED DESIGN OF MATING TAB.
- 2 MATING GAGE TAB: 60447-1

90009-8	7.5	2.5	PHOSPHOR BRONZE 0.45t リン青銅	170604-2
			BRASS 0.45t 黄銅	170604-1
TOOL P/N 工具型番	1st ON (Kgf) 初回最大挿入力	1st OFF (Kgf) 初回最小引抜力	BODY MATERIAL ボディ部材料	PART NO. 型番

CLASS 分類	FASTON ファストン	TYPE 型式	PRE-INSULATED DIAMOND GRIP	WIRE RANGE 抱合電線断面積	AWG #16-#14 1.04~2.63 mm <sup>2</sup>	INSULATION DIA 被覆外径	[.160 IN] 最大 4.06 MAX mmφ
-------------	-----------------	------------	-------------------------------	-----------------------	--	------------------------	------------------------------

DIMENSIONS: 単位: 耗 mm	DWN T.TSUZAKI 09FEB2011	MATERIAL 材料	表参照 SEE TABLE	FINISH 仕上	電気錫めっき ELECTRIC TIN PL
TOLERANCES UNLESS OTHERWISE SPECIFIED: 一般公差	CHK T.MASUDA 09FEB2011	Tyco Electronics Corporation Kawasaki, Japan			
0 PLC ±	APVD T.MASUDA 09FEB2011	NAME 名称			
1 PLC ±	PRODUCT SPEC 製品規格	250 SERIES FASTON RECEPTACLE 250シリーズ ファストン リセプタクル			
2 PLC ± ±0.4	APPLICATION SPEC 取付適用規格	SIZE	CAGE CODE	DRAWING NO 番号	RESTRICTED TO
3 PLC ±	WEIGHT	A4	00779	C-170604	
4 PLC ±					
ANGLES ±1°					
	CUSTOMER DRAWING	SCALE 尺度	4:1	SHEET 1 OF 1	REV E

THIS DRAWING IS UNPUBLISHED.

ALL INTERNATIONAL RIGHTS RESERVED.

COPYRIGHT 1966 BY TYCO ELECTRONICS CORPORATION.