



Chipsmall Limited consists of a professional team with an average of over 10 year of expertise in the distribution of electronic components. Based in Hongkong, we have already established firm and mutual-benefit business relationships with customers from,Europe,America and south Asia,supplying obsolete and hard-to-find components to meet their specific needs.

With the principle of “Quality Parts,Customers Priority,Honest Operation,and Considerate Service”,our business mainly focus on the distribution of electronic components. Line cards we deal with include Microchip,ALPS,ROHM,Xilinx,Pulse,ON,Everlight and Freescale. Main products comprise IC,Modules,Potentiometer,IC Socket,Relay,Connector.Our parts cover such applications as commercial,industrial, and automotives areas.

We are looking forward to setting up business relationship with you and hope to provide you with the best service and solution. Let us make a better world for our industry!



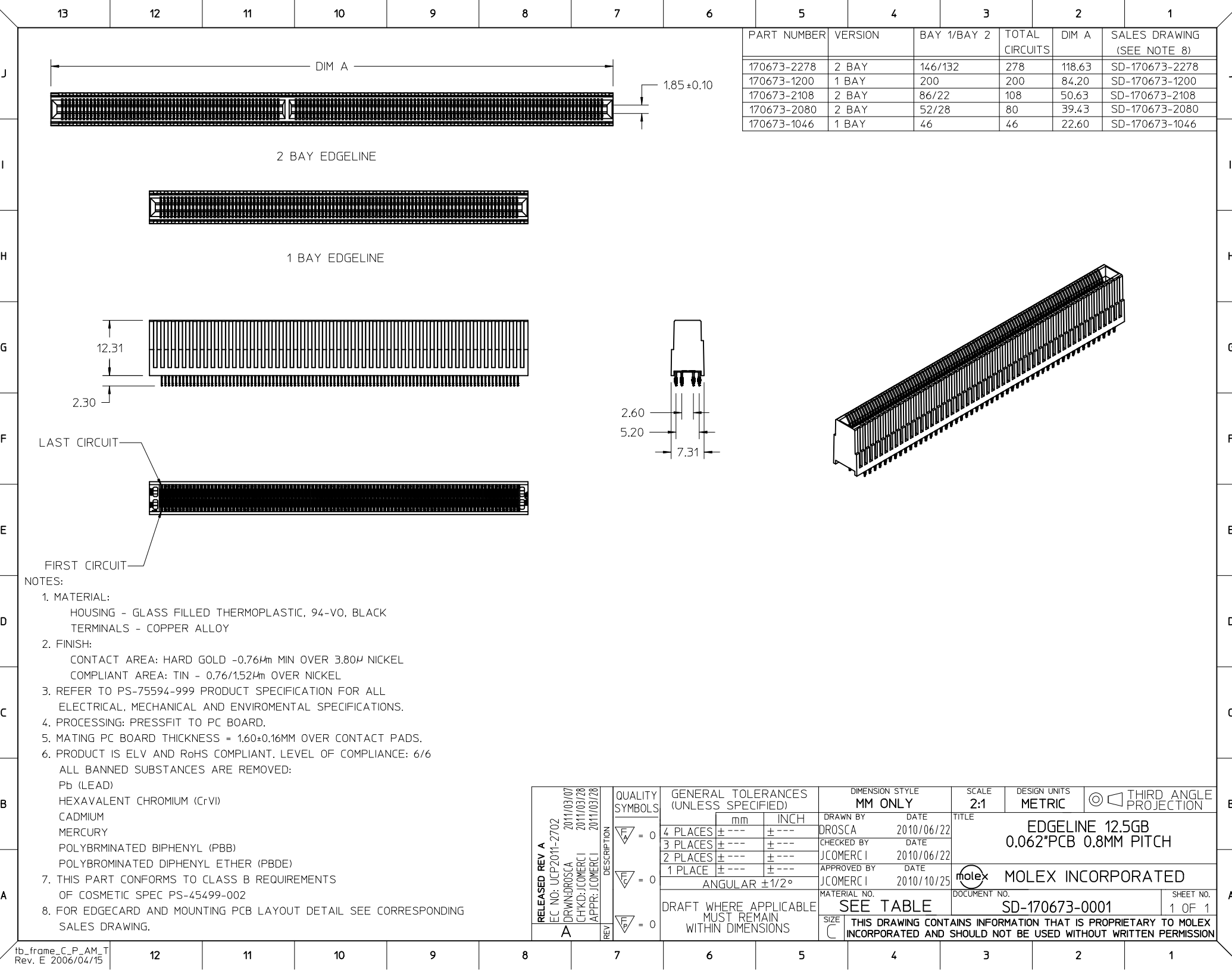
Contact us

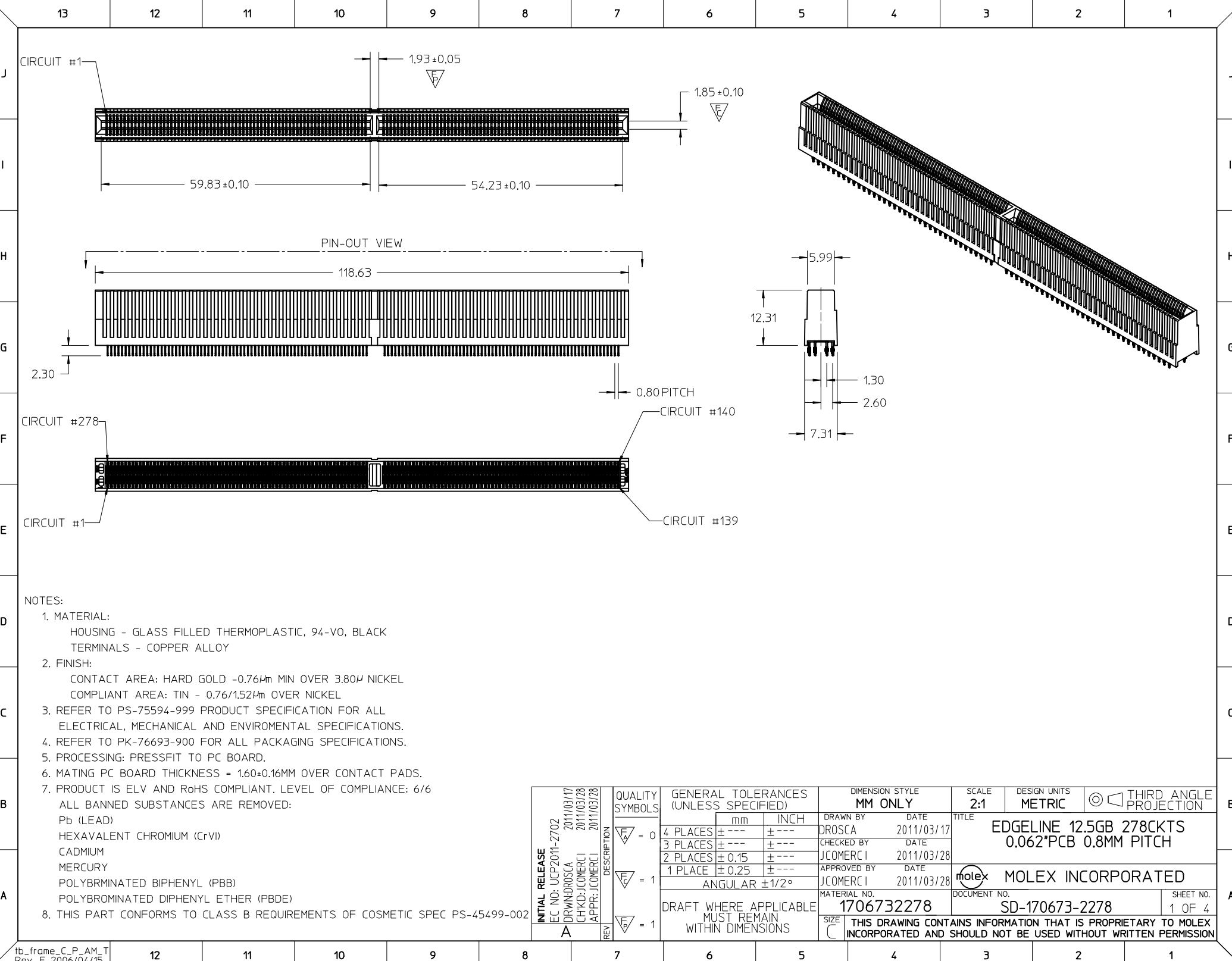
Tel: +86-755-8981 8866 Fax: +86-755-8427 6832

Email & Skype: info@chipsmall.com Web: www.chipsmall.com

Address: A1208, Overseas Decoration Building, #122 Zhenhua RD., Futian, Shenzhen, China



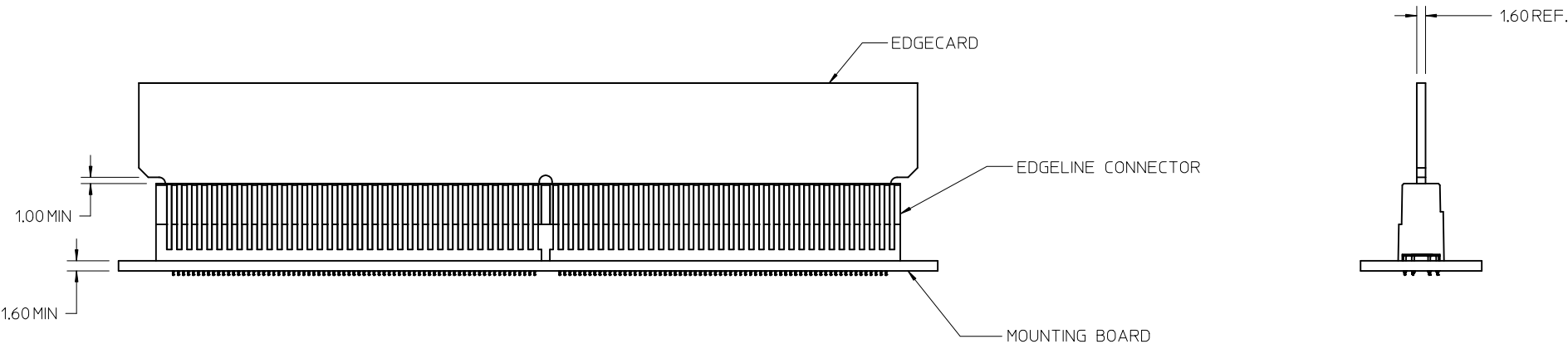






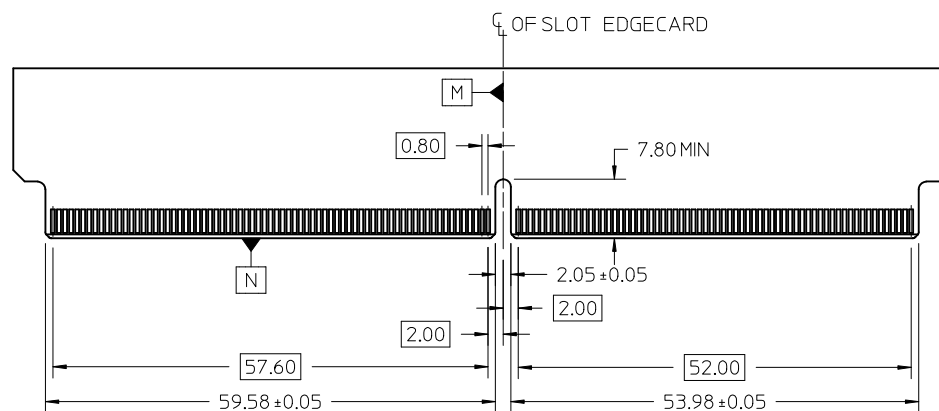
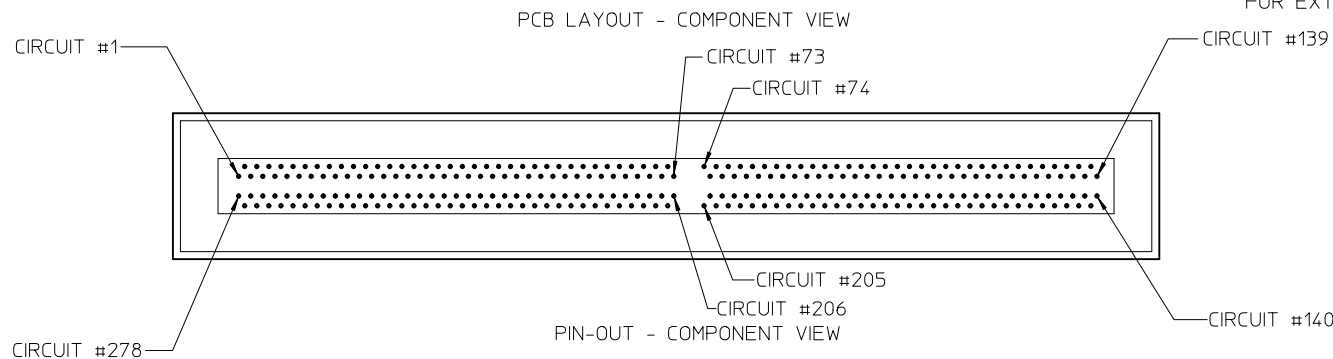
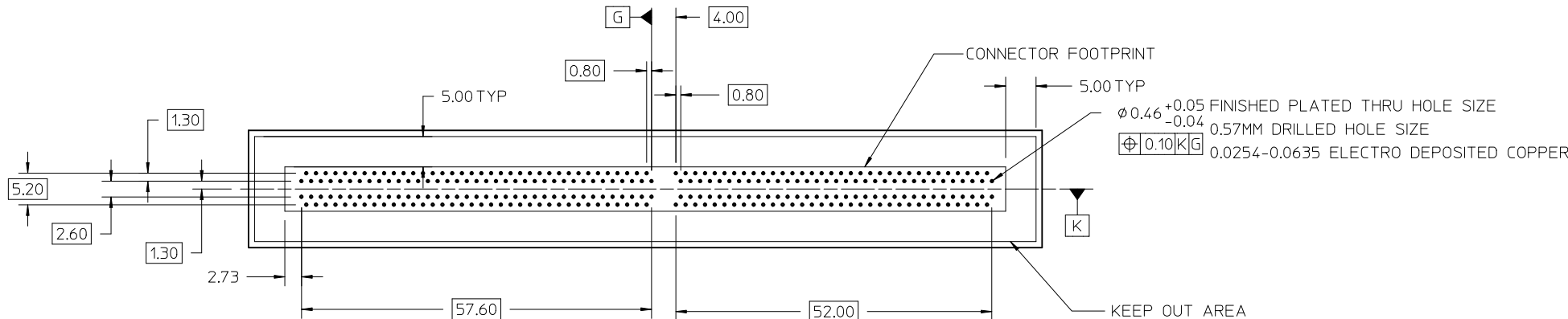
- NOTES:
1. MATERIAL:
HOUSING - GLASS FILLED THERMOPLASTIC, 94-V0, BLACK
TERMINALS - COPPER ALLOY
 2. FINISH:
CONTACT AREA: HARD GOLD -0.76µm MIN OVER 3.80µm NICKEL
COMPLIANT AREA: TIN - 0.76/1.52µm OVER NICKEL
 3. REFER TO PS-75594-999 PRODUCT SPECIFICATION FOR ALL ELECTRICAL, MECHANICAL AND ENVIROMENTAL SPECIFICATIONS.
 4. REFER TO PK-76693-900 FOR ALL PACKAGING SPECIFICATIONS.
 5. PROCESSING: PRESSFIT TO PC BOARD.
 6. MATING PC BOARD THICKNESS = 1.60±0.16MM OVER CONTACT PADS.
 7. PRODUCT IS ELV AND RoHS COMPLIANT. LEVEL OF COMPLIANCE: 6/6
ALL BANNED SUBSTANCES ARE REMOVED:
Pb (LEAD)
HEXAVALENT CHROMIUM (CrVI)
CADMIUM
MERCURY
POLYBRMINATED BIPHENYL (PBB)
POLYBROMINATED DIPHENYL ETHER (PBDE)
 8. THIS PART CONFORMS TO CLASS B REQUIREMENTS OF COSMETIC SPEC PS-45499-002

INITIAL RELEASE EC NO: UCP2011-2702 2011/03/17 DRWN:DROSCA CHKD:JCOMERC I APPR:JCOMERC I 2011/03/28 2011/03/28	QUALITY SYMBOLS	DESCRIPTION	GENERAL TOLERANCES (UNLESS SPECIFIED)		DIMENSION STYLE MM ONLY		SCALE 2:1	DESIGN UNITS METRIC	THIRD ANGLE PROJECTION			
				mm	INCH	DRAWN BY	DATE	TITLE EDGELINE 12.5GB 278CKTS 0.062"PCB 0.8MM PITCH				
			4 PLACES	± ---	± ---	DROSCA	2011/03/17					
			3 PLACES	± ---	± ---	CHECKED BY	DATE					
			2 PLACES	± 0.15	± ---	JCOMERC I	2011/03/28	MOLEX MOLEX INCORPORATED				
			1 PLACE	± 0.25	± ---	APPROVED BY	DATE					
		ANGULAR ±1/2°		JCOMERC I	2011/03/28	MATERIAL NO.		DOCUMENT NO.		SHEET NO.		
				1706732278		SD-170673-2278		1 OF 4				
A	REV		DRAFT WHERE APPLICABLE MUST REMAIN WITHIN DIMENSIONS		SIZE C	THIS DRAWING CONTAINS INFORMATION THAT IS PROPRIETARY TO MOLEX INCORPORATED AND SHOULD NOT BE USED WITHOUT WRITTEN PERMISSION						

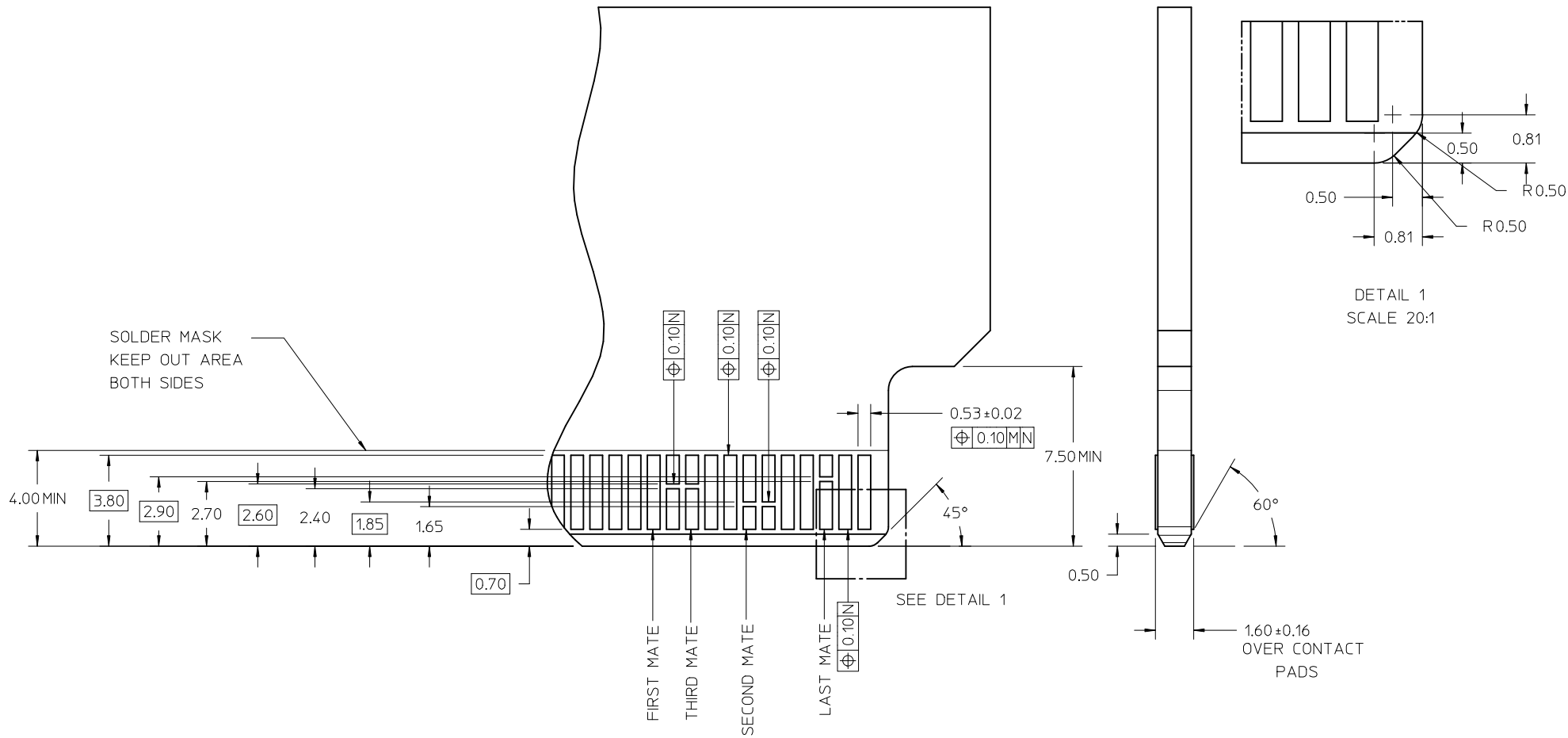
EDGELINE CONNECTOR BOARD MOUNTING



SEE SHEET 1 EC NO: UCP2011-2702 2011/03/17 DRWN: DROSCA CHKD: JCOMERC I APPR: JCOMERC I 2011/03/28 2011/03/28 A	QUALITY SYMBOLS ▽=0 ▽=0	DESCRIPTION	GENERAL TOLERANCES (UNLESS SPECIFIED)			DIMENSION STYLE MM ONLY		SCALE 2:1	DESIGN UNITS METRIC	 THIRD ANGLE PROJECTION			
				mm	INCH	DRAWN BY	DATE	TITLE EDGELINE 12.5GB 278CKTS 0.062"PCB 0.8MM PITCH					
			4 PLACES	± .---	± .---	DROSCA	2011/03/17						
			3 PLACES	± .---	± .---	CHECKED BY	DATE						
			2 PLACES	± 0.15	± .---	JCOMERC I	2011/03/28						
			1 PLACE	± 0.25	± .---	APPROVED BY	DATE						
				ANGULAR ±1/2°			JCOMERC I	2011/03/28	 MOLEX INCORPORATED				
			DRAFT WHERE APPLICABLE MUST REMAIN WITHIN DIMENSIONS										
			SIZE C					SEE SHEET 1			DOCUMENT NO. SD-170673-2278		SHEET NO. 2 OF 4
			THIS DRAWING CONTAINS INFORMATION THAT IS PROPRIETARY TO MOLEX INCORPORATED AND SHOULD NOT BE USED WITHOUT WRITTEN PERMISSION										




SEE SHEET 1 EC NO: UCP2011-2702 DRAWN: DROSCA 2011/03/17 CHKD: JCOMERC I 2011/03/28 APPR: JCOMERC I 2011/03/28 A	QUALITY SYMBOLS <div><div>F</div>=0</div> <div><div>E</div>=0</div> <div><div>F</div>=0</div>	DESCRIPTION	GENERAL TOLERANCES (UNLESS SPECIFIED)		DIMENSION STYLE MM ONLY		SCALE 2:1	DESIGN UNITS METRIC	<div><div></div><div></div></div> THIRD ANGLE PROJECTION	
				mm	INCH	DRAWN BY DROSCA	DATE 2011/03/17	TITLE EDGELINE 12.5GB 278CKTS 0.062*PCB 0.8MM PITCH		
			4 PLACES	±---	±---	CHECKED BY JCOMERC I	DATE 2011/03/28			
			3 PLACES	±---	±---	APPROVED BY JCOMERC I	DATE 2011/03/28	MOLEX MOLEX INCORPORATED		
			2 PLACES	±0.15	±---	MATERIAL NO.	DOCUMENT NO.	SHEET NO.		
			1 PLACE	±0.25	±---	SEE SHEET 1		SD-170673-2278		
			ANGULAR ±1/2°							
			DRAFT WHERE APPLICABLE MUST REMAIN WITHIN DIMENSIONS							



NOTE:

THESE ARE GENERIC DETAILS THAT DESCRIBES THE CONFIGURATION OF VARIOUS PCB DESIGN ELEMENTS. THE CUSTOMER MUST DETERMINE WHERE AND WHEN TO USE EACH ELEMENT TO ACCOMODATE THEIR SPECIFIC APPLICATION.

SEE SHEET 1 EC NO: UCP2011-2702 DRWN: DROSCA 2011/03/17 CHKD: JCOMERC I 2011/03/28 APPR: JCOMERC I 2011/03/28	REV A	DESCRIPTION	QUALITY SYMBOLS <div>▽=0</div> <div>▽=0</div>	GENERAL TOLERANCES (UNLESS SPECIFIED)		DIMENSION STYLE MM ONLY		SCALE 8:1	DESIGN UNITS METRIC	 THIRD ANGLE PROJECTION	TITLE EDGELINE 12.5GB 278CKTS 0.062"PCB 0.8MM PITCH			
					mm	INCH	DRAWN BY DROSCA	DATE 2011/03/17						
				4 PLACES	± ---	± ---	CHECKED BY JCOMERC I	DATE 2011/03/28						
				3 PLACES	± ---	± ---	APPROVED BY JCOMERC I	DATE 2011/03/28						
				2 PLACES	± 0.15	± ---								
				1 PLACE	± 0.25	± ---								
				ANGULAR ±1/2°										
				DRAFT WHERE APPLICABLE MUST REMAIN WITHIN DIMENSIONS			SEE SHEET 1		DOCUMENT NO. SD-170673-2278			SHEET NO. 4 OF 4		
							SIZE C		THIS DRAWING CONTAINS INFORMATION THAT IS PROPRIETARY TO MOLEX INCORPORATED AND SHOULD NOT BE USED WITHOUT WRITTEN PERMISSION					