



Chipsmall Limited consists of a professional team with an average of over 10 year of expertise in the distribution of electronic components. Based in Hongkong, we have already established firm and mutual-benefit business relationships with customers from,Europe,America and south Asia,supplying obsolete and hard-to-find components to meet their specific needs.

With the principle of “Quality Parts,Customers Priority,Honest Operation,and Considerate Service”,our business mainly focus on the distribution of electronic components. Line cards we deal with include Microchip,ALPS,ROHM,Xilinx,Pulse,ON,Everlight and Freescale. Main products comprise IC,Modules,Potentiometer,IC Socket,Relay,Connector.Our parts cover such applications as commercial,industrial, and automotives areas.

We are looking forward to setting up business relationship with you and hope to provide you with the best service and solution. Let us make a better world for our industry!



## Contact us

Tel: +86-755-8981 8866 Fax: +86-755-8427 6832

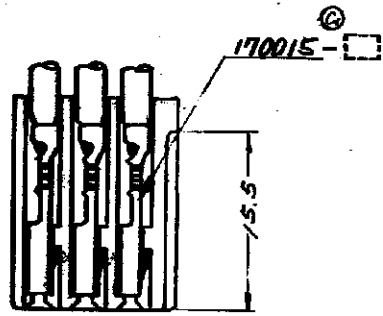
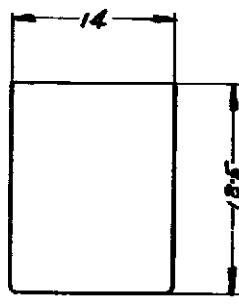
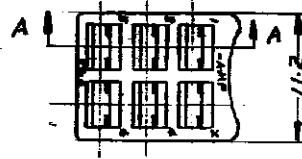
Email & Skype: info@chipsmall.com Web: www.chipsmall.com

Address: A1208, Overseas Decoration Building, #122 Zhenhua RD., Futian, Shenzhen, China

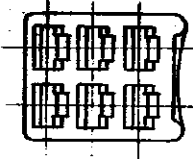


REV. NUMBER  
**C-170803**

カゴ番号	材料	色別	備考
170803-1	AS樹脂	グレー	
170803-2	ABS樹脂	黒	
170803-3	AS樹脂	ホワイト	KOREA 生産品



断面 A-A



6回路 7x7x11x14mm 97 ハウジング 170802 1 嵌合で使用スル。

単位: 全 DIMENSIONS IN MM. DO NOT SCALE PRINT

C2	ADDED → (J-9488)	T.S.	9/15/86	© 1981 BY AMP (Japan), Ltd. ALL RIGHTS RESERVED. AMP PRODUCTS COVERED BY PATENTS AND/OR PATENTS PENDING.	参考図面 (CUSTOMER COPY) (REFERENCE ONLY)
C1	REVISED (JB-4697)	S.O.	1/15/78	材料 (MATERIAL) 三表参照	AMP 日本 AMP 株式会社 TOKYO, JAPAN
C	DESIGN CHANGE (JB-728)	N.H.	1/15/74	仕上 (FINISH)	
B	DESIGN CHANGE (JB-714)	N.H.	1/15/74	適合電線断面 (WIRE RANGE)	分類 (CLASS)
A	AMPLIFIED ORIGINAL	N.I.	12/11/66	被覆外径 (INSULATION DIA.)	型式 (TYPE)
O	RELEASED (CP 65-040J-2A ZB)	N.E.	12/11/66	公差 (TOLERANCE EXCEPT AS NOTED)	LOG SIZE 番号 (NO)
LTR	変更 (REVISION RECORD)	DR.	CHK.	DATE	LOG SIZE 番号 (NO)
DR.	N. Hasegawa	DE.			J A C-170803
APP.	T. Kubota			12/15/86	名称 (NAME)
					6回路 7x7x11x14mm 97 ハウジング