



Chipsmall Limited consists of a professional team with an average of over 10 year of expertise in the distribution of electronic components. Based in Hongkong, we have already established firm and mutual-benefit business relationships with customers from,Europe,America and south Asia,supplying obsolete and hard-to-find components to meet their specific needs.

With the principle of "Quality Parts,Customers Priority,Honest Operation,and Considerate Service",our business mainly focus on the distribution of electronic components. Line cards we deal with include Microchip,ALPS,ROHM,Xilinx,Pulse,ON,Everlight and Freescale. Main products comprise IC,Modules,Potentiometer,IC Socket,Relay,Connector.Our parts cover such applications as commercial,industrial, and automotives areas.

We are looking forward to setting up business relationship with you and hope to provide you with the best service and solution. Let us make a better world for our industry!



## Contact us

Tel: +86-755-8981 8866 Fax: +86-755-8427 6832

Email & Skype: info@chipsmall.com Web: www.chipsmall.com

Address: A1208, Overseas Decoration Building, #122 Zhenhua RD., Futian, Shenzhen, China



DESCRIPTION: FEMALE SOLDER CUP/STAMPED

**SPECIFICATIONS:**

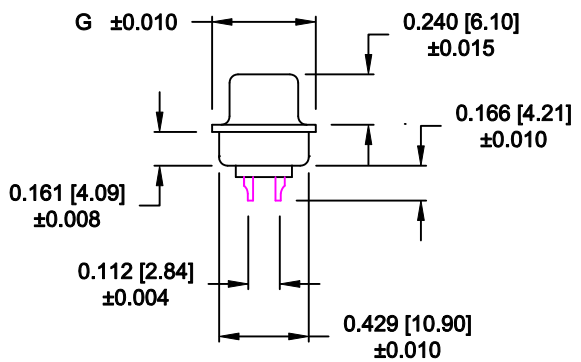
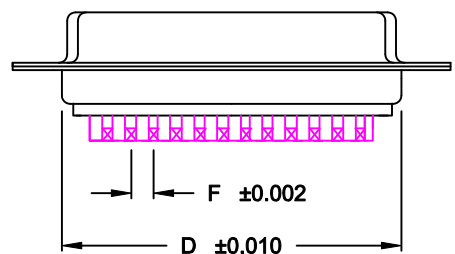
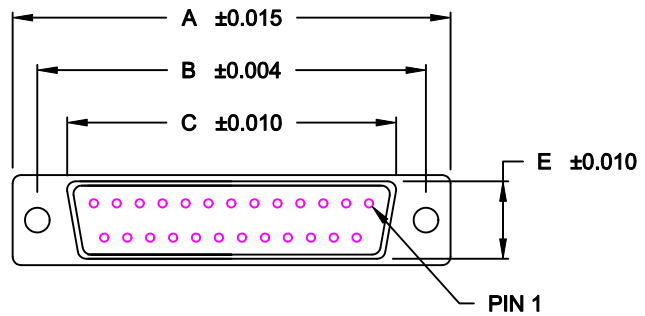
**MATERIALS:**

SHELL: STEEL, TIN (80u" TIN OVER 40u" COPPER)  
 OR NICKEL (80u" NICKEL OVER 40u" COPPER)  
 INSULATOR: UL 94V-0 RATED BLACK PBT  
 +30% FIBER-GLASS

**ELECTRICALS:**

CURRENT RATING: 5 AMPS  
 CONTACT RESISTANCE: 15 mOHMS MAX  
 INSULATOR RESISTANCE: 1000 MOHMS MIN  
 VOLTAGE: 500V AC FOR 1 MINUTE  
 TEMPERATURE: -50°C TO +100°C

| POS. | A     | B     | C     | D     | E     | F     | G     |
|------|-------|-------|-------|-------|-------|-------|-------|
| 09   | 1.213 | 0.984 | 0.642 | 0.756 | 0.311 | 0.109 | 0.496 |
|      | 30.80 | 24.99 | 16.30 | 19.20 | 7.90  | 2.77  | 12.60 |
| 15   | 1.541 | 1.312 | 0.971 | 1.091 | 0.311 | 0.109 | 0.496 |
|      | 39.14 | 33.32 | 24.65 | 27.70 | 7.90  | 2.77  | 12.60 |
| 25   | 2.087 | 1.852 | 1.512 | 1.618 | 0.311 | 0.109 | 0.496 |
|      | 53.00 | 47.04 | 38.40 | 41.10 | 7.90  | 2.77  | 12.60 |
| 37   | 2.728 | 2.500 | 2.157 | 2.256 | 0.311 | 0.109 | 0.496 |
|      | 69.29 | 63.50 | 54.80 | 57.30 | 7.90  | 2.77  | 12.60 |
| 50   | 2.638 | 2.406 | 2.055 | 2.169 | 0.429 | 0.109 | 0.602 |
|      | 67.00 | 61.00 | 52.20 | 55.10 | 10.90 | 2.77  | 15.30 |



**171-YYY-20YLYY1**

**SERIES** \_\_\_\_\_

**POSITIONS** \_\_\_\_\_

009  
015  
025  
037  
050

**GENDER** \_\_\_\_\_

1 = MALE  
2 = FEMALE

**TERMINATION** \_\_\_\_\_

0 = SOLDER CUP  
SHELL PLATING \_\_\_\_\_

2 = TIN  
3 = NICKEL

**HARDWARE OPTIONS** \_\_\_\_\_

00 = NO HARDWARE  
01 = .098 4-40 CLINCH NUT BOARD SIDE  
02 = .236 4-40 CLINCH NUT BOARD SIDE  
03 = .236 4-40 CLINCH NUT MATING SIDE  
05 = .237 4-40 BOARD LOCK  
91 = .237 4-40 SPACER/BOARD LOCK

**PLATING OPTIONS** \_\_\_\_\_

1 = GOLD FLASH  
2 = 30 MICRO-INCH GOLD

WILL ACCEPT 28-20 AWG CONDUCTORS

RoHS COMPLIANT

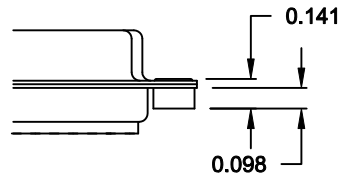
DO NOT SCALE FROM DRAWING

|                  |   |                                |                              |                         |
|------------------|---|--------------------------------|------------------------------|-------------------------|
|                  | THESE DRAWINGS AND SPECIFICATIONS ARE THE PROPERTY OF NorComp AND SHALL NOT BE REPRODUCED, COPIED OR USED AS THE BASIS FOR THE MANUFACTURE OF SALE OF APPARATUS WITHOUT WRITTEN PERMISSION. |                                | DRAWN:<br><b>PAM JENKINS</b> | DATE:<br><b>9-13-05</b> |
|                  |   |                                | CHECKED:                     | DATE:                   |
| <h1>NorComp</h1> |   | SCALE:                         | SHEET <b>1</b> OF <b>2</b>   | REV <b>9</b>            |
|                  |   | DWG NO. <b>171-YYY-20YLYY1</b> |                              |                         |

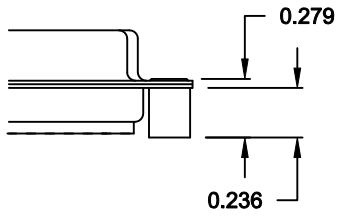
**TOLERANCE:**  
ALL DIMENSIONS ARE ±0.010

**ALL CLINCH-NUTS ARE 4-40 INTERNAL THREADS**

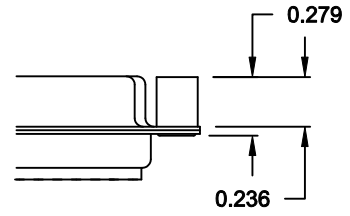
01X ..... 0.098" (BOARD SIDE) - CN1



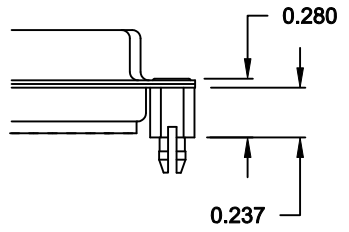
02X ..... 0.236" (BOARD SIDE) - CN2



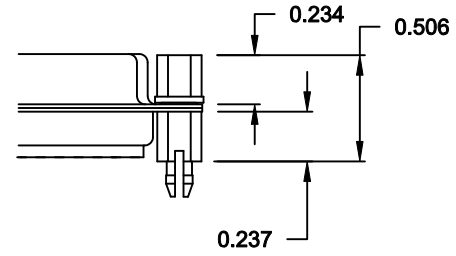
03X..... 0.236" (MATING SIDE) - CN8



05X ..... 0.237" (BOARD SIDE) - CN10




91X ..... 0.237" BOARD SIDE  
0.197 MATING SIDE  
CN10/SFSO4404



NOTE: 4-40 FEMALE SCREW LOCK IS REMOVABLE

**DO NOT SCALE FROM DRAWING**

|  |   |                                |                                |                          |
|--|---|--------------------------------|--------------------------------|--------------------------|
|  | THESE DRAWINGS AND SPECIFICATIONS ARE THE PROPERTY OF NorComp AND SHALL NOT BE REPRODUCED, COPIED OR USED AS THE BASIS FOR THE MANUFACTURE OF SALE OF APPARATUS WITHOUT WRITTEN PERMISSION. |                                | DRAWN:<br><b>WAYNE ROBBINS</b> | DATE:<br><b>11-28-05</b> |
|  |   |                                | CHECKED:                       | DATE:                    |
| <h1>NorComp</h1>   |   | SCALE:                         | SHEET <b>2</b> OF <b>2</b>     | REV <b>9</b>             |
|  |   | DWG NO. <b>171-YYY-20YLYY1</b> |                                |                          |

**RoHS COMPLIANT**