



Chipsmall Limited consists of a professional team with an average of over 10 year of expertise in the distribution of electronic components. Based in Hongkong, we have already established firm and mutual-benefit business relationships with customers from,Europe,America and south Asia,supplying obsolete and hard-to-find components to meet their specific needs.

With the principle of “Quality Parts,Customers Priority,Honest Operation,and Considerate Service”,our business mainly focus on the distribution of electronic components. Line cards we deal with include Microchip,ALPS,ROHM,Xilinx,Pulse,ON,Everlight and Freescale. Main products comprise IC,Modules,Potentiometer,IC Socket,Relay,Connector.Our parts cover such applications as commercial,industrial, and automotives areas.

We are looking forward to setting up business relationship with you and hope to provide you with the best service and solution. Let us make a better world for our industry!



## Contact us

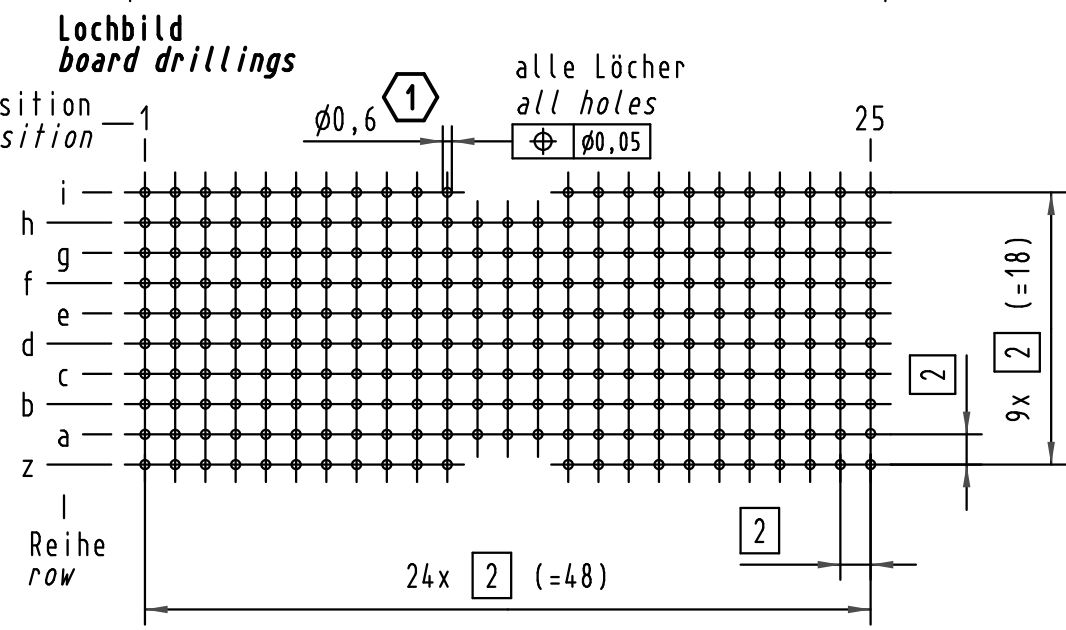
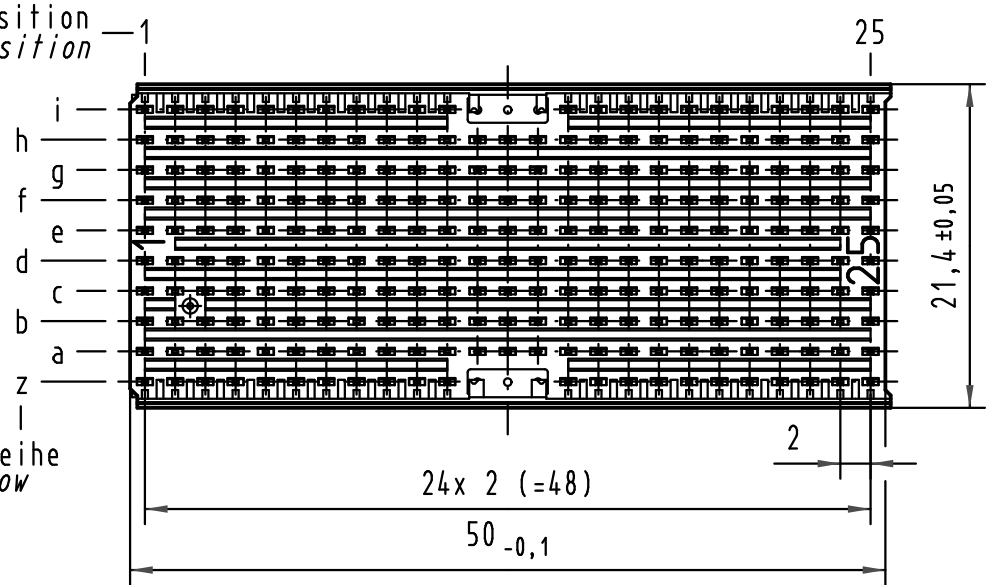
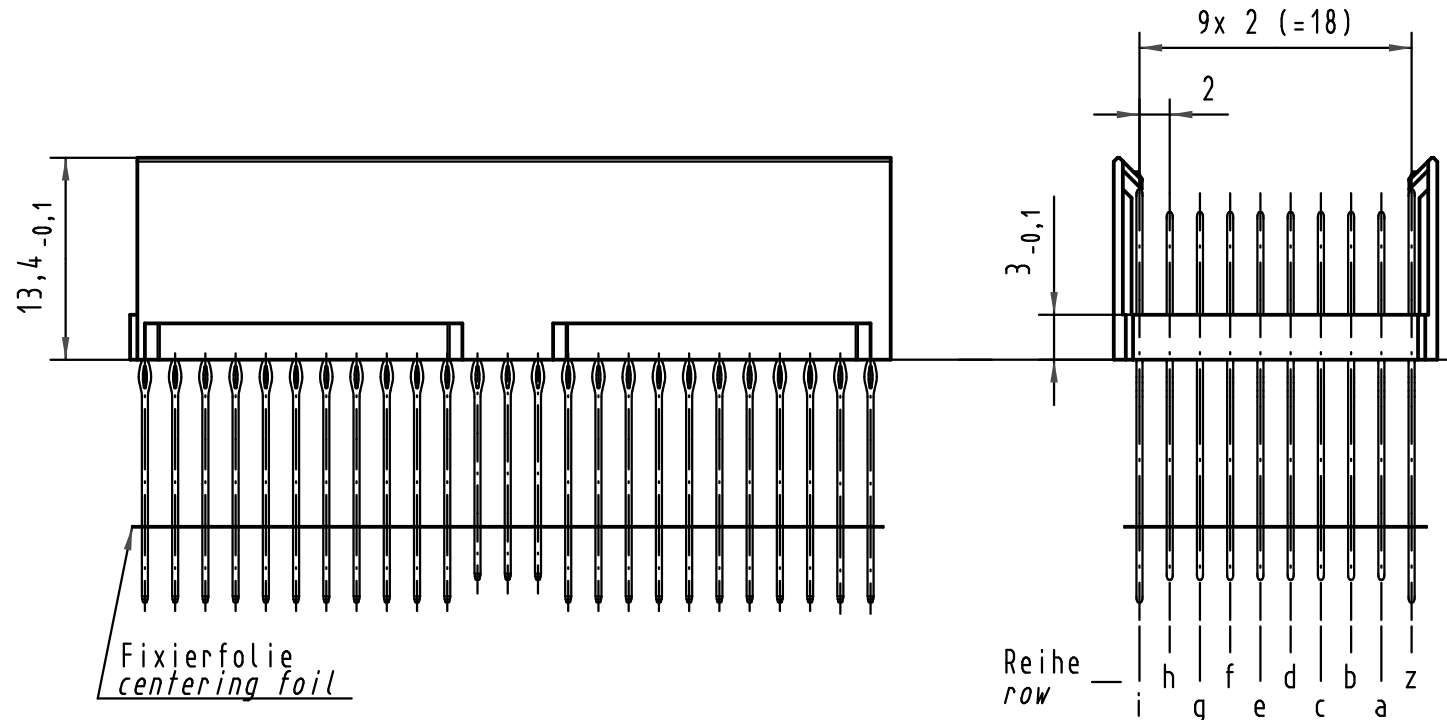
Tel: +86-755-8981 8866 Fax: +86-755-8427 6832

Email & Skype: info@chipsmall.com Web: www.chipsmall.com

Address: A1208, Overseas Decoration Building, #122 Zhenhua RD., Futian, Shenzhen, China

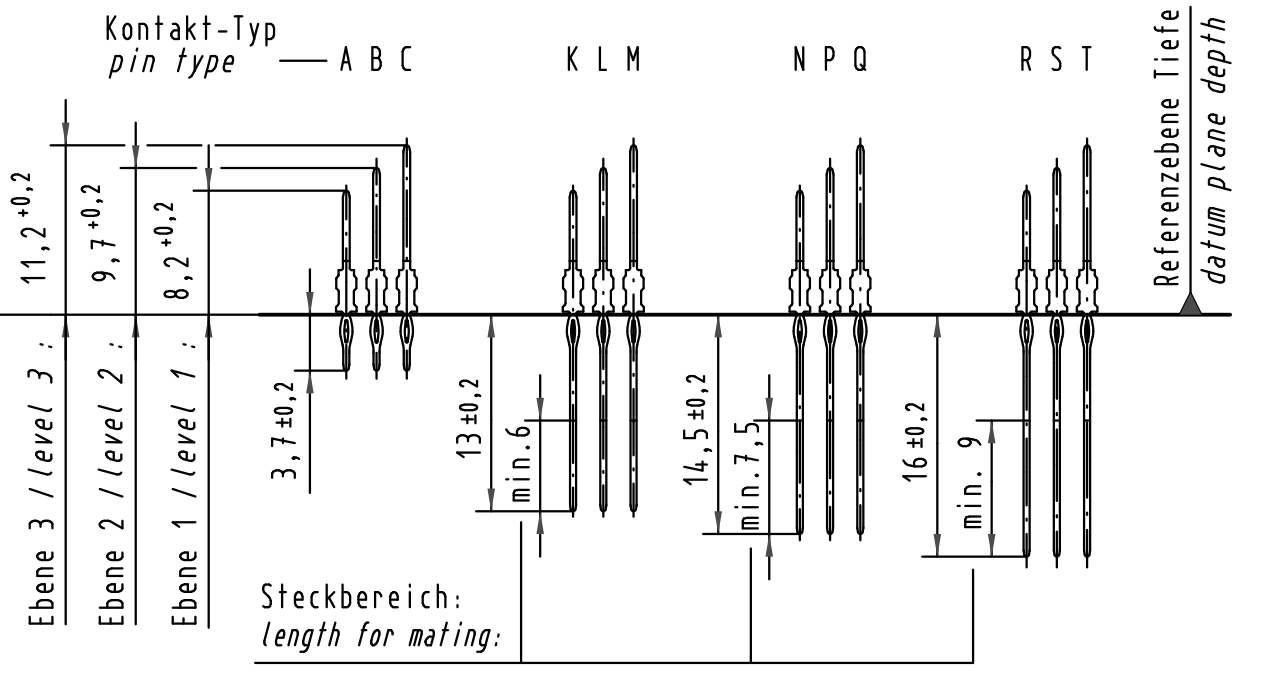


Alle Rechte vorbehalten/ All rights reserved

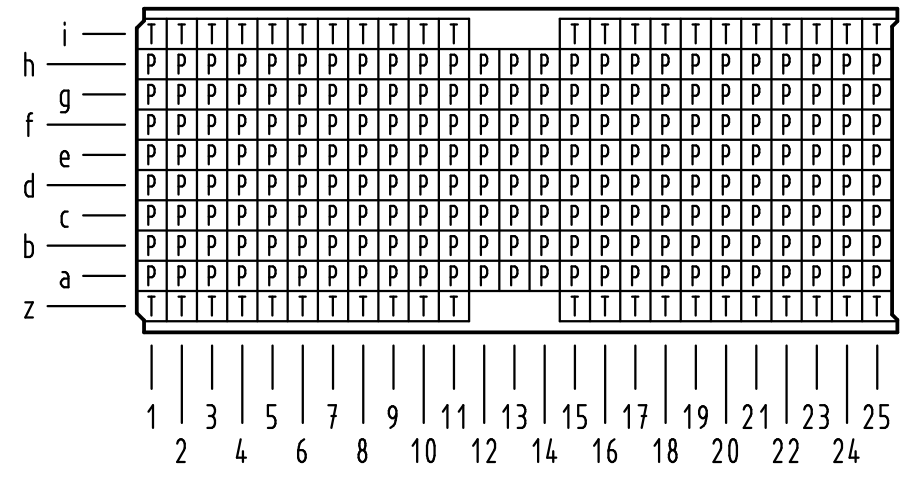


**Kontakt-Maße**  
**contact dimensions**

(Längen der Steck- und Anschlußseite gelten für eingepreßte Steckverbinder)  
(mating and termination length of contacts apply to pressed in connectors)



**Kontaktbelegung**  
**contact loading**



Empfohlener Lochaufbau und weitere Informationen siehe: DS 17 00 110 0101  
recommended configuration of plated through holes and further information see: DS 17 00 110 0101



All Dimensions in mm Original Size DIN A 3		Techn. Character.		Nicht tolerierte Maße / Free size tolerances IEC 61076-4-101	
Mod.	Dat.	Dat.	Name	Maßstab / Scale	har-bus HM Messerleiste Typ DE 244 pol., Anschlußlänge 14,5mm und 16mm har-bus HM male connector type DE 244 pol., term. length 14,5mm and 16mm
35970	13.01.10	Hage.	Detail. 04.10.00		
34337	23.05.07	Hage.	Insp. 04.10.00		
28688			Stand.		
HARTING Electronics GmbH & Co. KG D-32339 ESPELAMP					
					Blatt / page Sub.

17 10 244 4001	S4
17 10 244 2001	2
17 10 244 1001	1
Bestell-Nr. part-no.	Anforderungsstufe performance level <b>1</b>