



Chipsmall Limited consists of a professional team with an average of over 10 year of expertise in the distribution of electronic components. Based in Hongkong, we have already established firm and mutual-benefit business relationships with customers from,Europe,America and south Asia,supplying obsolete and hard-to-find components to meet their specific needs.

With the principle of “Quality Parts,Customers Priority,Honest Operation,and Considerate Service”,our business mainly focus on the distribution of electronic components. Line cards we deal with include Microchip,ALPS,ROHM,Xilinx,Pulse,ON,Everlight and Freescale. Main products comprise IC,Modules,Potentiometer,IC Socket,Relay,Connector.Our parts cover such applications as commercial,industrial, and automotives areas.

We are looking forward to setting up business relationship with you and hope to provide you with the best service and solution. Let us make a better world for our industry!



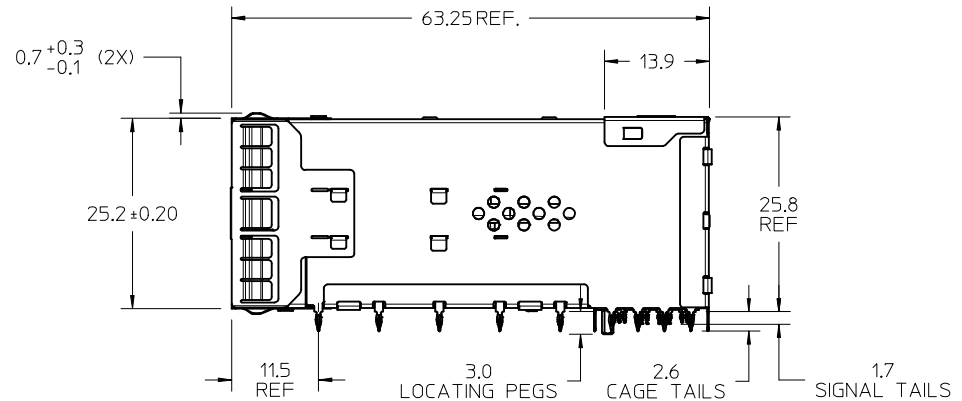
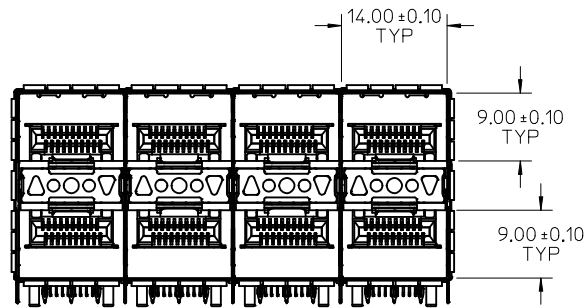
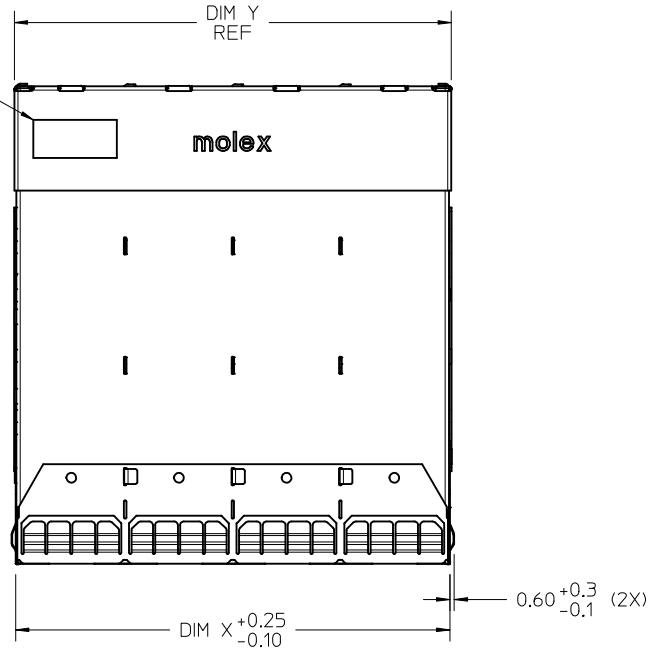
## Contact us

Tel: +86-755-8981 8866 Fax: +86-755-8427 6832

Email & Skype: [info@chipsmall.com](mailto:info@chipsmall.com) Web: [www.chipsmall.com](http://www.chipsmall.com)

Address: A1208, Overseas Decoration Building, #122 Zhenhua RD., Futian, Shenzhen, China



DATE CODE  
LOCATION

## NOTES:

## 1. MATERIAL:

CAGE: NICKEL SILVER  
CONNECTOR HOUSING: GLASS FILLED THERMOPLASTIC, UL: 94V-0, COLOR: BLACK  
LIGHT PIPES: POLYCARBONATE, 94 HB, COLOR: CLEAR  
TERMINALS: HIGH PERFORMANCE COPPER ALLOY  
FRONT SHIELD WALL: COPPER ALLOY  
LIGHT PIPE HOUSING: ZINC ALLOY

## 2. FINISH

TERMINALS: CONTACT AREA: 0.76  $\mu$ m MIN. HARD GOLD OVER  
3.8  $\mu$ m MIN. NICKEL.  
COMPLIANT TAIL: 0.7-1.5  $\mu$ m MATTE TIN OVER:  
0.7-1.5  $\mu$ m NICKEL

FRONT SHIELD WALL: 0.7-1.5  $\mu$ m NICKEL OVERALL

LIGHT PIPE HOUSING: 2.0  $\mu$ m NICKEL OVER 0.7  $\mu$ m COPPER

## 3. ALL SURFACES CLASS C PER MOLEX COSMETIC SPECIFICATION ES-171233-0001

## 4. 2X4 CONFIGURATION W/3 LIGHT PIPES SHOWN FOR REFERENCE, SEE SHEET 2 FOR AVAILABLE OPTIONS.

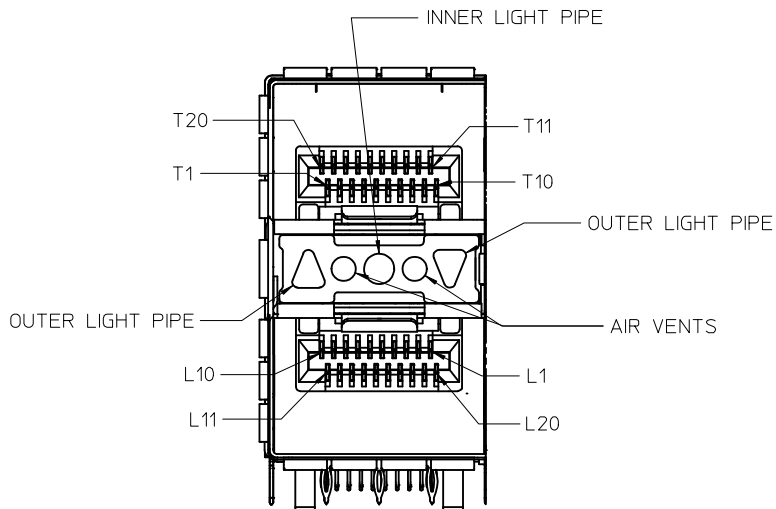
## 5. REFER TO PS-170071-0001 FOR ALL ELECTRICAL, MECHANICAL AND ENVIRONMENTAL SPECIFICATIONS.

## 6. REFER TO AS-170071-0001 FOR CONNECTOR MOUNTING AND REWORK INFORMATION.

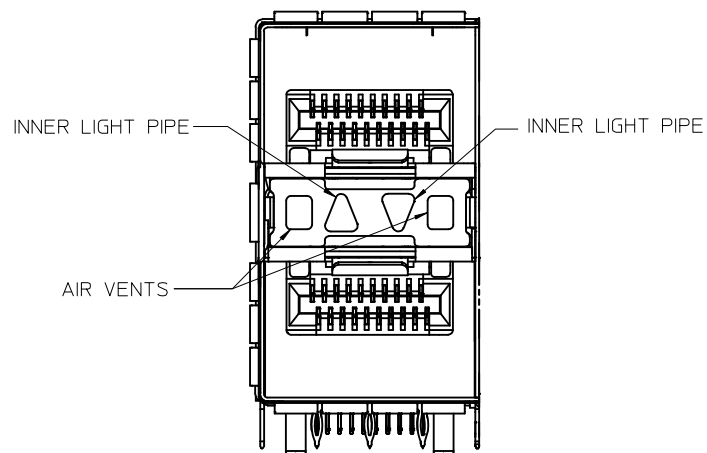
## 7. REFER TO AS-170071-0002 FOR PCB ROUTING RECOMMENDATIONS.

| PORT SIZE | PART NUMBER | DIM X  | DIM Y  |
|-----------|-------------|--------|--------|
| 2X4       | 171224-403* | 57.50  | 57.85  |
| 2X6       | 171224-603* | 86.00  | 86.35  |
| 2X8       | 171224-803* | 114.50 | 114.85 |
| 2X12      | 171224-123* | 171.50 | 171.85 |

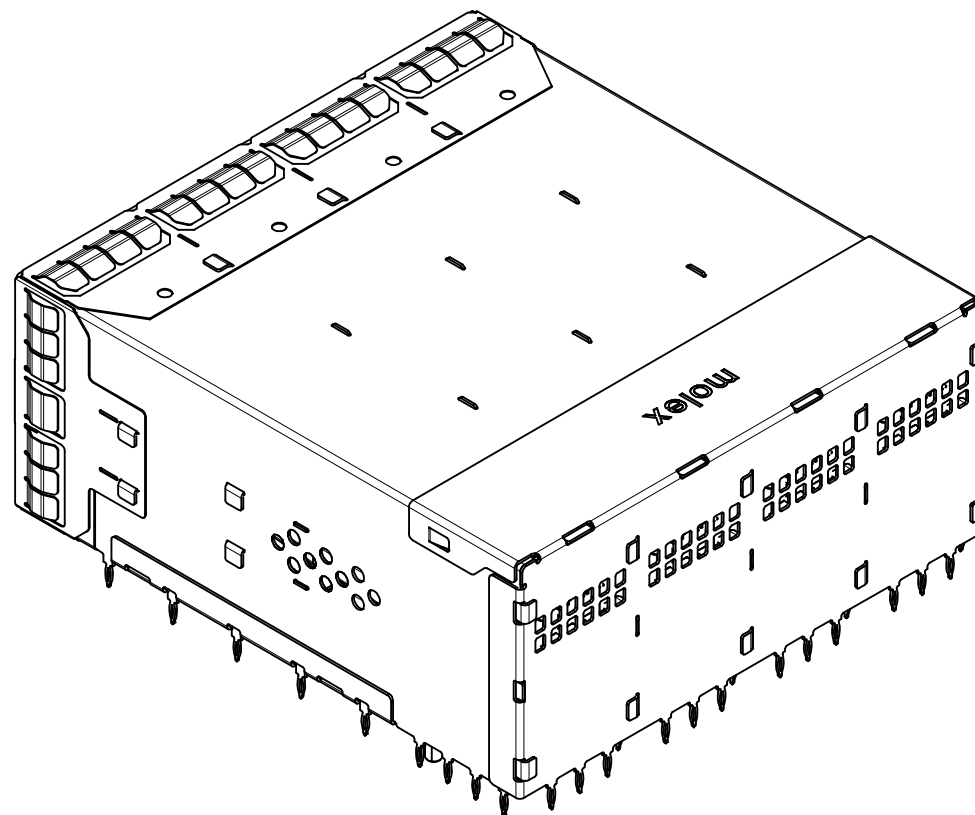
|  |                                      |   |   |  |
|--|--------------------------------------|---|---|--|
| REV TOLERANCES<br>EC NO: UCP2015-4683<br>DRWN:JKACHLIC 2015/05/07<br>CHKD:<br>APPR:MBANAKIS 2015/05/13 | QUALITY SYMBOLS<br>▽=0<br>▽=0<br>▽=0 | GENERAL TOLERANCES (UNLESS SPECIFIED)<br>mm INCH<br>4 PLACES ± --- ± ---<br>3 PLACES ± --- ± ---<br>2 PLACES ± 0.13 ± ---<br>1 PLACE ± 0.25 ± ---<br>0 PLACE ± --- ± ---<br>ANGULAR ±1/2°<br>DRAFT WHERE APPLICABLE MUST REMAIN WITHIN DIMENSIONS | DIMENSION STYLE<br>MM ONLY<br>DRAWN BY DATE<br>JKACHLIC 2013/06/27<br>CHECKED BY DATE<br>APPROVED BY DATE<br>MBANAKIS 2014/03/21<br>MATERIAL NO.<br>SEE CHART<br>SIZE C | SCALE<br>2:1<br>DESIGN UNITS<br>METRIC<br>THIRD ANGLE PROJECTION<br>ZSFP+ STACKED CONNECTOR<br>VENTED W/LIGHT PIPES<br>DOCUMENT NO.<br>SD-171224-4300<br>SHEET NO.<br>1 OF 4 |
|  |                                      |   |   |  |
|  |                                      |   |   |  |
|  |                                      |   |   |  |




3 LIGHT PIPE OPTION  
P/N 171224-\*\*30

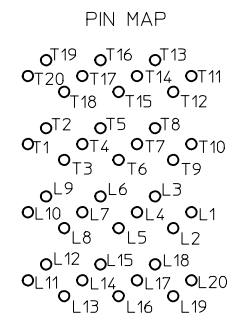
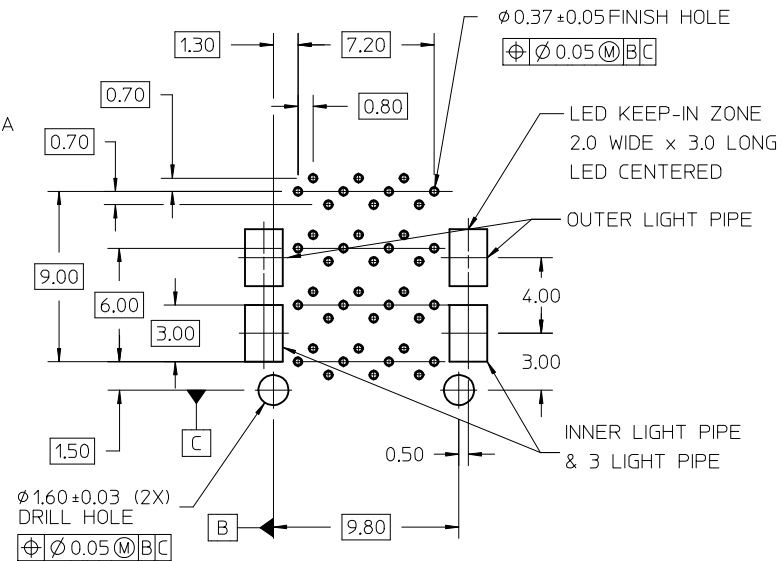
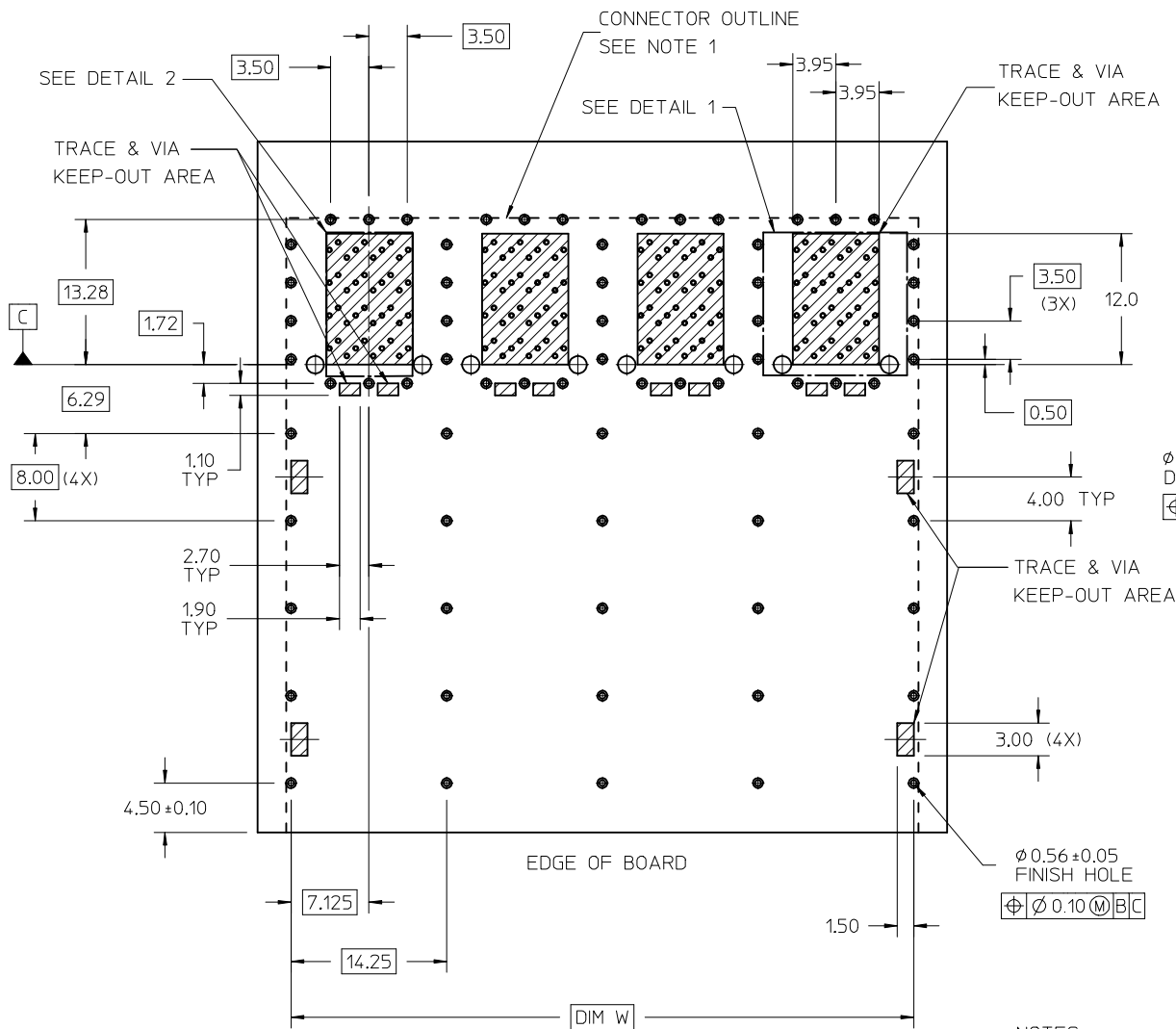


INNER LIGHT PIPE OPTION  
P/N 171224-\*\*31



VENTED BACK COVER

|   |             |   |  |       |      |                            |                    |              |  |  |  |                         |                    |                     |  |
|---|-------------|---|--|-------|------|----------------------------|--------------------|--------------|--|--|--|-------------------------|--------------------|---------------------|--|
| SEE SHEET 1<br>EC NO: UCP2015-4683<br>DRWN: JKACHLIC 2015/05/07<br>CHKD:<br>APPR: MBANAKIS 2015/05/13 | DESCRIPTION | QUALITY SYMBOLS<br><div>▽=0</div> <div>▽=0</div> <div>▽=0</div> | GENERAL TOLERANCES (UNLESS SPECIFIED)                      |       |      | DIMENSION STYLE<br>MM ONLY |                    | SCALE<br>3:1 | DESIGN UNITS<br>METRIC   |  THIRD ANGLE PROJECTION | TITLE<br>ZSFP+ STACKED CONNECTOR<br>VENTED W/LIGHT PIPES |                         |                    |                     |  |
|   |             |   | 4 PLACES<br>3 PLACES<br>2 PLACES<br>1 PLACE<br>0 PLACE     | mm    | INCH | DRAWN BY<br>JKACHLIC       | DATE<br>2013/06/27 | CHECKED BY   | DATE   |  |  | APPROVED BY<br>MBANAKIS | DATE<br>2014/03/21 |                     |  |
|   |             |   |  | ±---  | ±--- | MATERIAL NO.               | DOCUMENT NO.       |              |  |  |  |                         |                    | SHEET NO.<br>2 OF 4 |  |
|   |             |   |  | ±0.13 | ±--- |                            |                    |              |  |  |  |                         |                    |                     |  |
|   |             |   |  | ±0.25 | ±--- |                            |                    |              |  |  |  |                         |                    |                     |  |
|   |             |   |  | ±---  | ±--- |                            |                    |              |  |  |  |                         |                    |                     |  |
|   |             |   | ANGULAR ±1/2°  |       |      | SEE CHART                  |                    |              | SD-171224-4300   |  |  |                         |                    |                     |  |
|   |             |   | DRAFT WHERE APPLICABLE<br>MUST REMAIN<br>WITHIN DIMENSIONS |       |      |                            |                    |              | THIS DRAWING CONTAINS INFORMATION THAT IS PROPRIETARY TO MOLEX<br>INCORPORATED AND SHOULD NOT BE USED WITHOUT WRITTEN PERMISSION |  |  |                         |                    |                     |  |



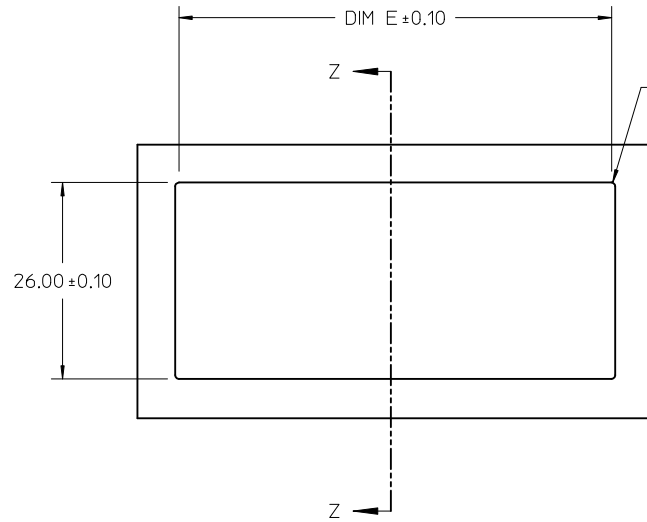
DETAIL 2  
SCALE 6:1

NOTES:

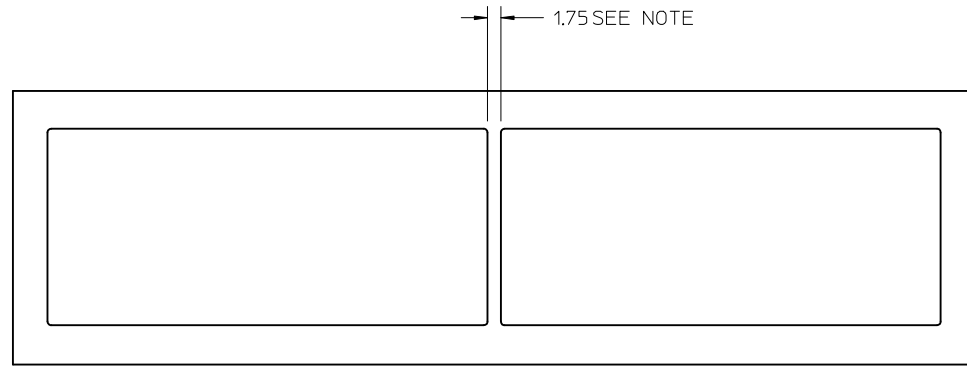
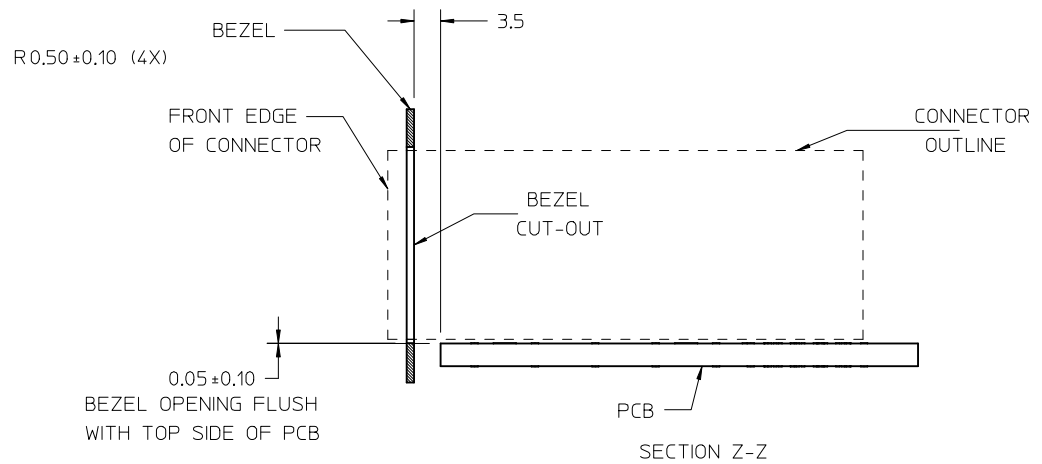
1. THE ENTIRE SURFACE UNDERNEATH THE CAGE IS A COMPONENT KEEP OUT AREA
2. CROSS HATCHED BOXES ARE TRACE AND VIA KEEP OUT AREAS

| PORT SIZE | DIM "W" | HOLE CHART        |                |                  |
|-----------|---------|-------------------|----------------|------------------|
|           |         | CONNECTOR (Ø0.37) | SHIELD (Ø0.56) | LOCATION (Ø1.60) |
| 2X4       | 57.00   | 160               | 69             | 8                |
| 2X6       | 85.50   | 240               | 99             | 12               |
| 2X8       | 114.00  | 320               | 129            | 16               |
| 2X12      | 171.00  | 480               | 189            | 24               |

|  |             |   |  |          |                            |  |                    |                                |  |                     |  |
|--|-------------|---|--|----------|----------------------------|--|--------------------|--------------------------------|--|---------------------|--|
| SEE SHEET 1<br>EC NO: UCP2015-4683<br>DRWN: JKACHLIC 2015/05/07<br>CHKD: MBANAKIS 2015/05/13<br>APPR: MBANAKIS | DESCRIPTION | QUALITY SYMBOLS<br><div>▽=0</div> <div>▽=0</div> <div>▽=0</div> | GENERAL TOLERANCES (UNLESS SPECIFIED)                |          | DIMENSION STYLE<br>MM ONLY |  | SCALE<br>3:1       | DESIGN UNITS<br>METRIC         | <div>THIRD ANGLE PROJECTION</div> <div>ZSFP+ STACKED CONNECTOR VENTED W/LIGHT PIPES</div> <div>molex</div> |                     |  |
|  |             |   | 4 PLACES   | mm       | INCH                       | DRAWN BY<br>JKACHLIC   | DATE<br>2013/06/27 | TITLE                          |  |                     |  |
|  |             |   |  | 3 PLACES | ± ---                      | ± ---  | CHECKED BY         |                                |  | DATE                |  |
|  |             |   | 2 PLACES   | ± 0.13   | ± ---                      | APPROVED BY<br>MBANAKIS  | DATE<br>2014/03/21 | DOCUMENT NO.<br>SD-171224-4300 |  | SHEET NO.<br>3 OF 4 |  |
|  |             |   | 1 PLACE  | ± 0.25   | ± ---                      |  |                    |                                |  |                     |  |
|  |             |   | 0 PLACE  | ± ---    | ± ---                      | MATERIAL NO.   |                    |                                |  |                     |  |
|  |             |   | ANGULAR ±1/2°  |          |                            | SEE CHART  |                    |                                |  |                     |  |
|  |             |   | DRAFT WHERE APPLICABLE MUST REMAIN WITHIN DIMENSIONS |          |                            | SIZE C THIS DRAWING CONTAINS INFORMATION THAT IS PROPRIETARY TO MOLEX INCORPORATED AND SHOULD NOT BE USED WITHOUT WRITTEN PERMISSION |                    |                                |  |                     |  |
|  |             |   | REV  |          |                            |  |                    |                                |  |                     |  |



BEZEL CUT-OUT DETAIL  
BEZEL THICKNESS 0.8-2.6



BEZEL CUT-OUT FOR  
CONNECTOR STACKING

| PORT SIZE | DIM "E" |
|-----------|---------|
| 2X4       | 58.25   |
| 2X6       | 86.75   |
| 2X8       | 115.25  |
| 2X12      | 172.25  |

NOTE:

FOR SIDE BY SIDE STACKING OF CONNECTORS, A BASIC DIMENSION OF 3.0mm BETWEEN CONNECTOR MOUNTING PATTERNS IS THE RECOMMENDED MINIMUM SPACING.

|  |                    |  |  |                |                            |                         |                    |  |                        |
|--|--------------------|--|--|----------------|----------------------------|-------------------------|--------------------|--|------------------------|
| SEE SHEET 1<br>EC NO: UCP2015-4683<br>DRWN: JKACHLIC 2015/05/07<br>CHKD: MBANAKIS 2015/05/13<br>APPR: MBANAKIS | DESCRIPTION<br>REV | QUALITY SYMBOLS<br>▽=0<br>▽=0<br>▽=0   | GENERAL TOLERANCES (UNLESS SPECIFIED)                  |                | DIMENSION STYLE<br>MM ONLY |                         | SCALE<br>2:1       | DESIGN UNITS<br>METRIC                                   | THIRD ANGLE PROJECTION |
|  |                    |  | 4 PLACES<br>3 PLACES<br>2 PLACES<br>1 PLACE<br>0 PLACE | mm             | INCH                       | DRAWN BY<br>JKACHLIC    | DATE<br>2013/06/27 | TITLE<br>ZSFP+ STACKED CONNECTOR<br>VENTED W/LIGHT PIPES |                        |
|  |                    |  |  |                |                            | CHECKED BY              | DATE               |  |                        |
|  |                    |  |  |                |                            | APPROVED BY<br>MBANAKIS | DATE<br>2014/03/21 |  |                        |
|  |                    |  |  |                |                            | MATERIAL NO.            | DOCUMENT NO.       |  |                        |
| ANGULAR ±1/2°  |                    | SEE CHART  |  | SD-171224-4300 |                            | SHEET NO.<br>4 OF 4     |                    |  |                        |
| DRAFT WHERE APPLICABLE<br>MUST REMAIN<br>WITHIN DIMENSIONS   |                    | THIS DRAWING CONTAINS INFORMATION THAT IS PROPRIETARY TO MOLEX<br>INCORPORATED AND SHOULD NOT BE USED WITHOUT WRITTEN PERMISSION |  |                |                            |                         |                    |  |                        |