



Chipsmall Limited consists of a professional team with an average of over 10 year of expertise in the distribution of electronic components. Based in Hongkong, we have already established firm and mutual-benefit business relationships with customers from,Europe,America and south Asia,supplying obsolete and hard-to-find components to meet their specific needs.

With the principle of “Quality Parts,Customers Priority,Honest Operation,and Considerate Service”,our business mainly focus on the distribution of electronic components. Line cards we deal with include Microchip,ALPS,ROHM,Xilinx,Pulse,ON,Everlight and Freescale. Main products comprise IC,Modules,Potentiometer,IC Socket,Relay,Connector.Our parts cover such applications as commercial,industrial, and automotives areas.

We are looking forward to setting up business relationship with you and hope to provide you with the best service and solution. Let us make a better world for our industry!



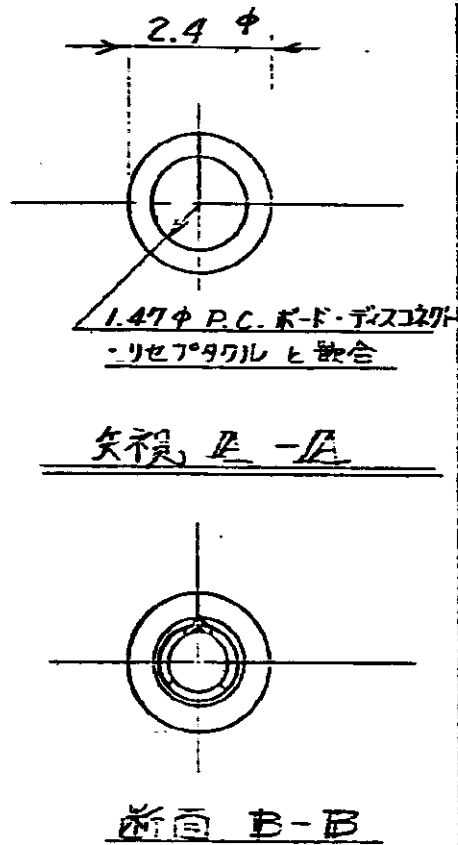
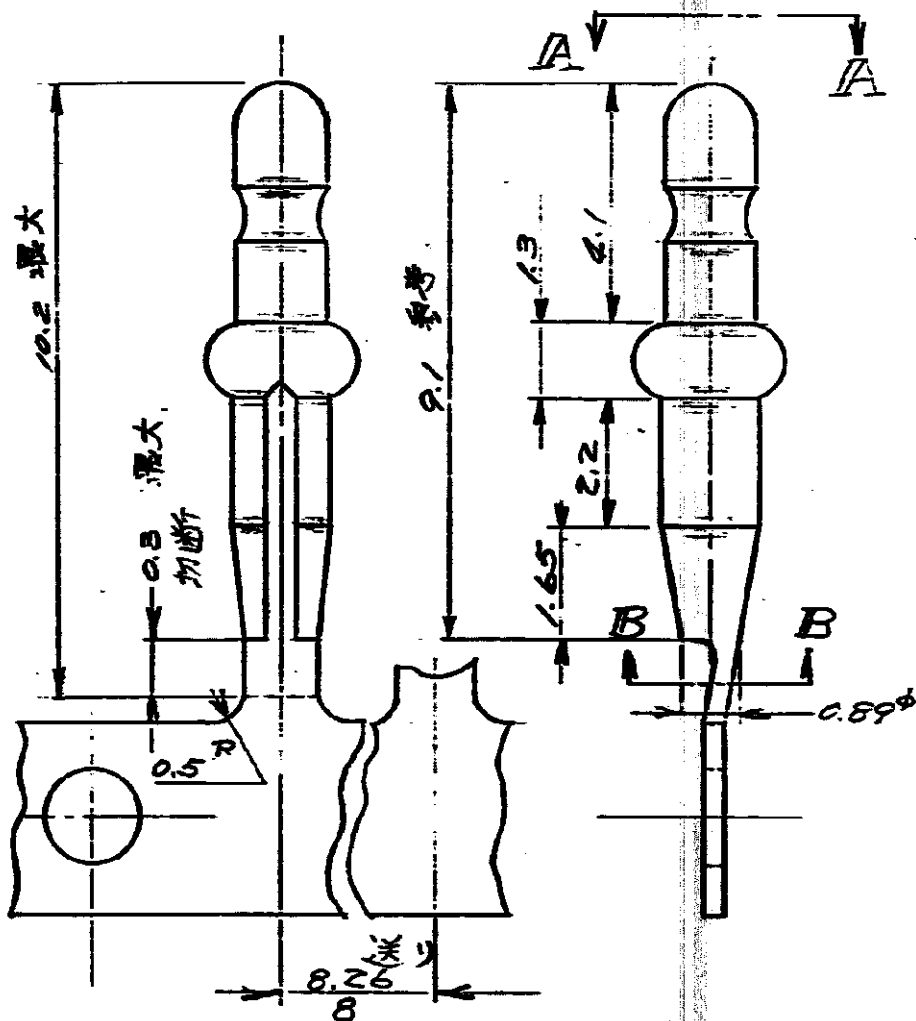
Contact us

Tel: +86-755-8981 8866 Fax: +86-755-8427 6832

Email & Skype: info@chipsmall.com Web: www.chipsmall.com

Address: A1208, Overseas Decoration Building, #122 Zhenhua RD., Futian, Shenzhen, China





- 注)
1. 通用側溝基板厚 1.59~2.38
 2. 適用側溝基板穴径 1.47~1.57
 3. 製品規格番号 108-5058

単位: 凡 寸法は mm DO NOT SCALE PRINT

171236-1 171255-1 0.25φ 鍍め鋼(鋼下地)素鋼 170136-1, 2

型番 球状端子型番 材料および仕上 嵌合相手型番

171236-1 171255-1 0.25φ 鍍め鋼(鋼下地)素鋼 170136-1, 2 型番 球状端子型番 材料および仕上 嵌合相手型番		参考図面 (CUSTOMER COPY) (REFERENCE ONLY)	
05 REDRAWN W/CHANGE SC 1/8 1/8		表参照 TRADE MARK AAP 日本エー・エム・ピー株式会社 TOKYO, JAPAN	
02 CORRECTIVE JK-0199 ADDED L.P. NO.		表参照 CONDUCTOR WIRE RANGE 11 10W AWG	
01 (P.DWG REV. 0.) 0 RELEASE (REV. 0)		INSULATION DIA. 11 10W	
LTR 変更 REVISION RECORD DR. CHK. DATE		TOLERANCE: ±0.4 EXCEPT AS NOTED ±1.0 NET SCALE LOC. SIZE. CS. NO. REV. 8-1 JAC-171236 03	
DR. 2. Masui CHK.		1.47φ P.C. ボード・ピン	