



Chipsmall Limited consists of a professional team with an average of over 10 year of expertise in the distribution of electronic components. Based in Hongkong, we have already established firm and mutual-benefit business relationships with customers from,Europe,America and south Asia,supplying obsolete and hard-to-find components to meet their specific needs.

With the principle of “Quality Parts,Customers Priority,Honest Operation,and Considerate Service”,our business mainly focus on the distribution of electronic components. Line cards we deal with include Microchip,ALPS,ROHM,Xilinx,Pulse,ON,Everlight and Freescale. Main products comprise IC,Modules,Potentiometer,IC Socket,Relay,Connector.Our parts cover such applications as commercial,industrial, and automotives areas.

We are looking forward to setting up business relationship with you and hope to provide you with the best service and solution. Let us make a better world for our industry!



Contact us

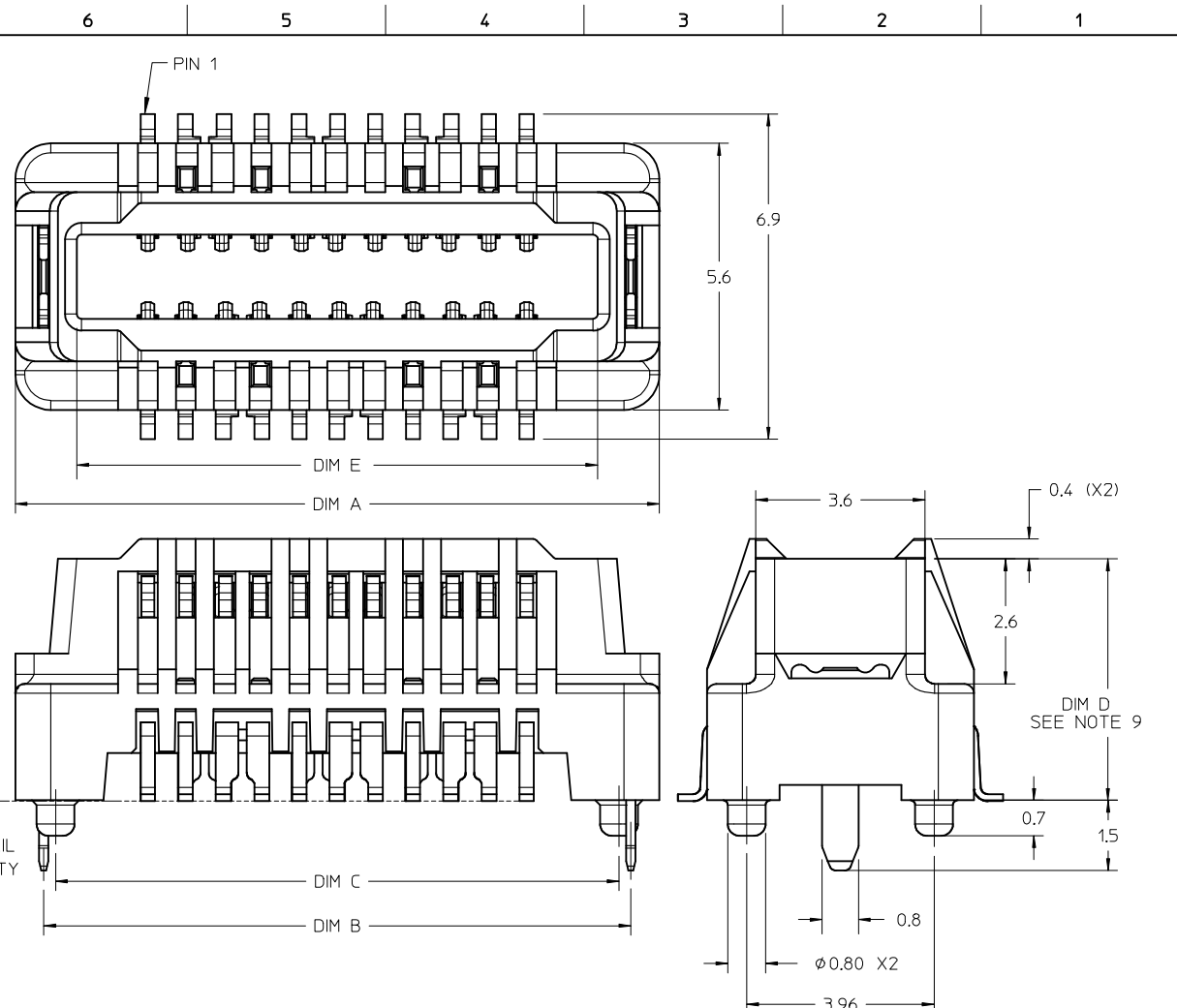
Tel: +86-755-8981 8866 Fax: +86-755-8427 6832

Email & Skype: info@chipsmall.com Web: www.chipsmall.com

Address: A1208, Overseas Decoration Building, #122 Zhenhua RD., Futian, Shenzhen, China



| 10 | 9 | 8 | 7 | 6 | 5 | 4 | 3 | 2 | 1 |
|-------------|----------|------------|------------|-------|-------|-------|-------|-------|---|
| PART NUMBER | CKT SIZE | DIFF PAIRS | SPARE CKTS | DIM A | DIM B | DIM C | DIM E | DIM D | |
| 171450-0101 | 22 | 6 | 2 | 13.6 | 12.40 | 11.90 | 11.0 | 3.10 | |
| 171450-0102 | | | | | | | | 4.10 | |
| 171450-0105 | 60 | 16 | 8 | 28.8 | 27.60 | 27.10 | 26.2 | 3.10 | |
| 171450-0106 | | | | | | | | 4.10 | |
| 171450-0109 | 120 | 32 | 16 | 56.8 | 55.60 | 55.10 | 26.2 | 3.10 | |
| 171450-0110 | | | | | | | | 4.10 | |



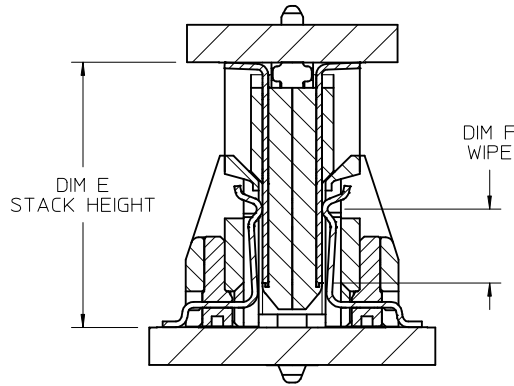
- NOTES:
1. MATERIALS: HOUSING: LCP, UL94V-0, BLACK
CONTACTS: HIGH PERFORMANCE COPPER ALLOY
 2. FINISH: 0.76 μm MIN SELECT GOLD IN CONTACT AREA,
SELECT TIN IN TAIL AREA, OVERALL NICKEL.
 3. PRODUCT SPECIFICATION: PS-171446-0001
 4. PACKAGING SPECIFICATION: PK-70873-6002
 5. MATES WITH SPEEDSTACK PLUG: 171446
 6. APPLICATION SPECIFICATION: AS-171450-9999
 7. COSMETIC SPECIFICATION: PS-45499-002 CLASS B
 8. PART STATUS: CONTACT MOLEX
 9. DIM D ON THIS DRAWING PLUS DIM D ON DRAWING # SD-171446-1000
EQUALS THE SYSTEM MATED STACK HEIGHT
 10. PARTS SHIPPED WITH PICK AND PLACE COVERS.

| | | | | | | | | | | | |
|--|----------------------------|----------------------|---------------------------------------|-----------------------|-----------------|------------------------|--------|--|--|--|--|
| REVISED EDGE CARDS | EC NO: UCP2015-5331 | QUALITY SYMBOLS | GENERAL TOLERANCES (UNLESS SPECIFIED) | | DIMENSION STYLE | | SCALE | DESIGN UNITS | THIRD ANGLE PROJECTION | | |
| | DRWN: JBRINGHAM 2015/08/25 | | mm | INCH | MM ONLY | 10:1 | METRIC | RECEPTACLE ASSEMBLY SPEEDSTACK CONNECTOR | | | |
| | CHKD: DMCCOWAN 2015/08/25 | | 4 PLACES ± --- ± --- | | DRAWN BY | DATE | TITLE | | | | |
| | APPR: DMCCOWAN 2015/09/18 | | 3 PLACES ± --- ± --- | | TGREGORI | 2013/03/25 | | | | | |
| | REV | | DESCRIPTION | 2 PLACES ± 0.13 ± --- | | CHECKED BY | DATE | | | | |
| | | 1 PLACE ± 0.25 ± --- | | APPROVED BY | DATE | molex | | | | | |
| | | 0 PLACE ± --- ± --- | | JCOMERC I | 2013/04/24 | | | | DOCUMENT NO. SD-171450-0000 SHEET NO. 1 OF 8 | | |
| ANGULAR ± 1/2° | | | DRAFT WHERE APPLICABLE | | | MATERIAL NO. SEE TABLE | | | | | |
| DRAFT WHERE APPLICABLE MUST REMAIN WITHIN DIMENSIONS | | | SIZE B | | | | | | TM-171450-0000 | | |

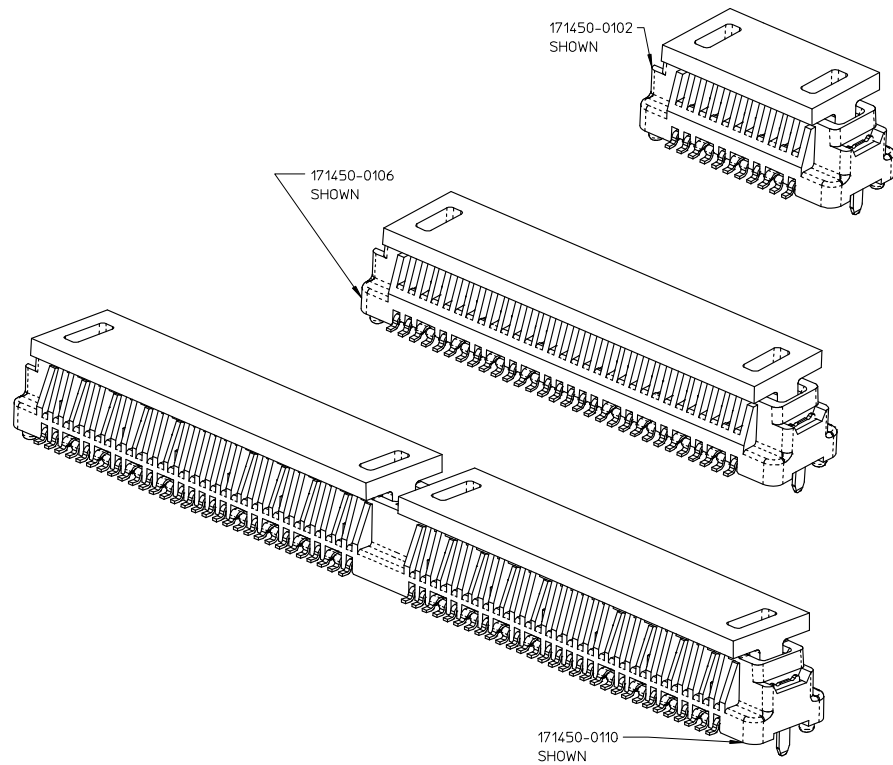
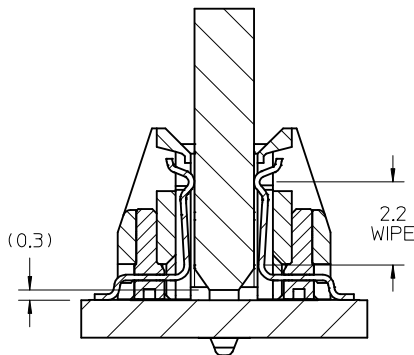
MEZZANINE (PLUG & RECEPTACLE) STACKING CHART

| | | PLUG OPTIONS (1mm WIPE) | | | | PLUG OPTIONS (2mm WIPE) | | | | | |
|-----------------------|-------------|-------------------------|-----------------------------------|-------------|-------------|-------------------------|-------------|-------------|-----|-----|-----|
| | | HEIGHT | 1mm | 2mm | 3mm | 4mm | 1mm | 2mm | 3mm | 4mm | |
| 22 CKT | 171446-1101 | 171446-1102 | 171446-1103 | 171446-1104 | 171446-1105 | 171446-1106 | 171446-1107 | 171446-1108 | | | |
| 60 CKT | 171446-1109 | 171446-1110 | 171446-1111 | 171446-1112 | 171446-1113 | 171446-1114 | 171446-1115 | 171446-1116 | | | |
| RECEPTACLE OPTIONS | 22 CKT | 171450-0101 | 3mm | 4/1 | 5/1 | 6/1 | 7/1 | N/A | N/A | N/A | N/A |
| | 60 CKT | 171450-0105 | | | | | | | | | |
| | 120 CKT | 171450-0109 | | | | | | | | | |
| | 22 CKT | 171450-0102 | 4mm | 5/1 | 6/1 | 7/1 | 8/1 | 5/2 | 6/2 | 7/2 | 8/2 |
| | 60 CKT | 171450-0106 | | | | | | | | | |
| | 120 CKT | 171450-0110 | | | | | | | | | |
| CIRCUITS | MOLEX P/N | HEIGHT | STACK HEIGHT (DIM E)/WIPE (DIM F) | | | | | | | | |

MEZZANINE APPLICATION
(PLUG & RECEPTACLE)

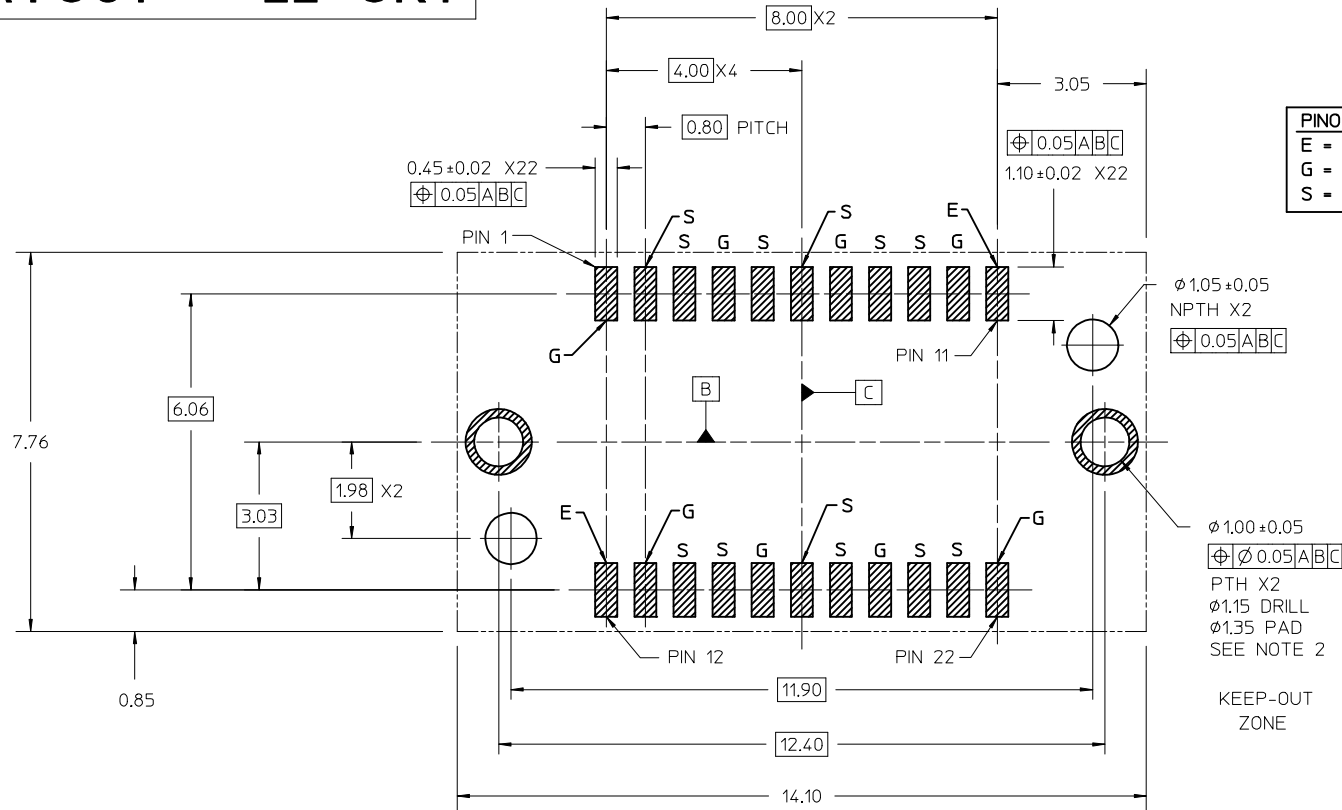


EDGE CARD APPLICATION
SEE NOTE 3 ON SHEETS
6, 7 & 8



| | | | | | | | |
|---|-----------------|-----|---|--|---|--|------------------------|
| SEE SHEET 1 EC NO: UCP2015-5331 DRAWN: BINGHAM 2015/08/25 CHKD: MCGOWAN 2015/08/25 APPR: MCGOWAN 2015/09/18 | QUALITY SYMBOLS | | GENERAL TOLERANCES (UNLESS SPECIFIED) | DIMENSION STYLE MM ONLY | SCALE 10:1 | DESIGN UNITS METRIC | THIRD ANGLE PROJECTION |
| | ▽=0 | ▽=0 | ▽=0 | mm INCH | DRAWN BY DATE TGREGORI 2013/03/25 | RECEPTACLE ASSEMBLY SPEEDSTACK CONNECTOR molex | |
| | ▽=0 | ▽=0 | ▽=0 | 4 PLACES ± --- ± --- 3 PLACES ± --- ± --- 2 PLACES ± 0.13 ± --- 1 PLACE ± 0.25 ± --- 0 PLACE ± --- ± --- | CHECKED BY DATE | | |
| | D | REV | DESCRIPTION | ANGULAR ±1/2° | APPROVED BY DATE JCOMERCI 2013/04/24 | MATERIAL NO. | DOCUMENT NO. |
| | | | DRAFT WHERE APPLICABLE MUST REMAIN WITHIN DIMENSIONS | SEE CHART | SD-171450-0000 | | 2 OF 8 |
| THIS DRAWING CONTAINS INFORMATION THAT IS PROPRIETARY TO MOLEX INCORPORATED AND SHOULD NOT BE USED WITHOUT WRITTEN PERMISSION | | | | | | | |

PCB LAYOUT - 22 CKT



| PINOUT LEGEND | |
|---------------|----------|
| E | = EXTRA |
| G | = GROUND |
| S | = SIGNAL |

PCB LAYOUT (COMPONENT SIDE)

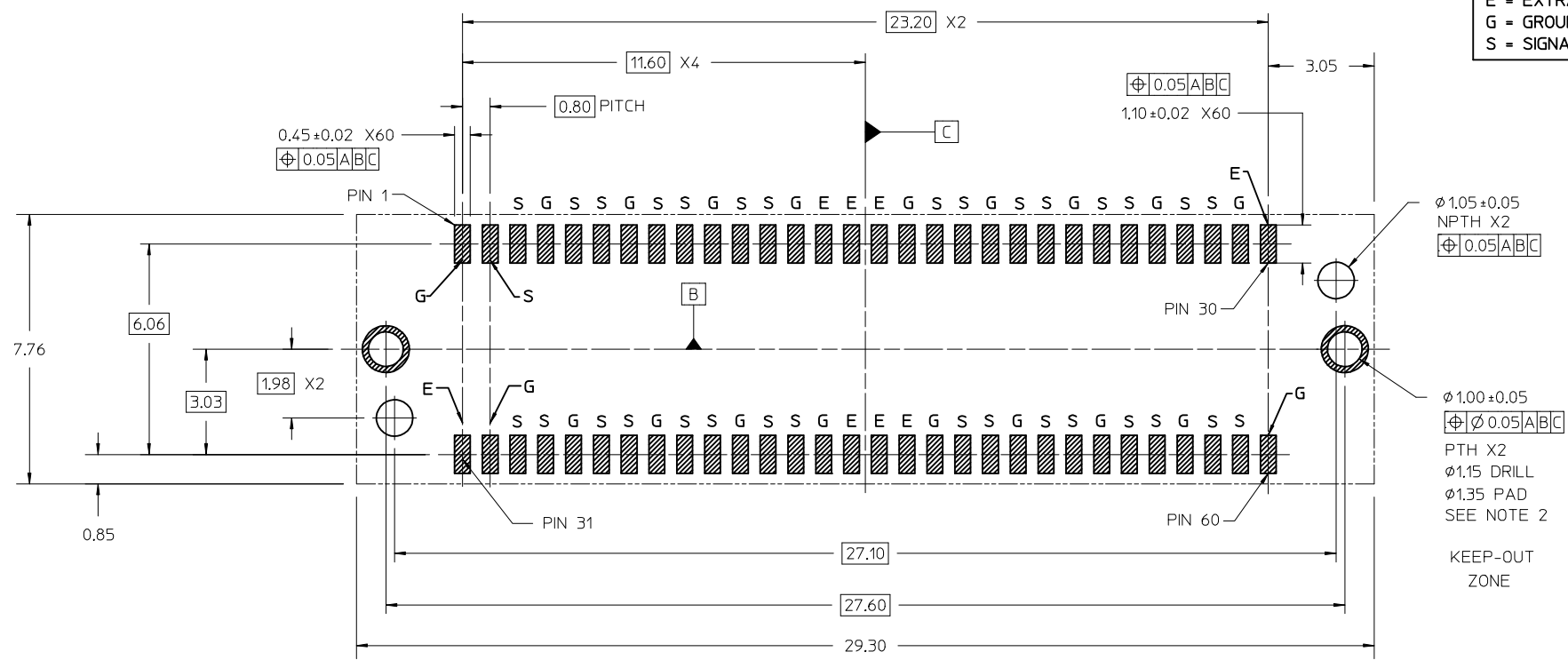
SOLDER PASTE THICKNESS: 0.15 MIN
 DATUM [A] IS THE BOTTOM SURFACE OF THE PCB

- NOTES:
- PIN NUMBERING IS FOR REFERENCE ONLY. OTHER PIN NUMBERS WILL NOT AFFECT THE OPERATION OF THE CONNECTOR.
 - RETENTION NAIL MUST BE SOLDERED ONTO THE PCB FOR PROPER CONNECTOR FUNCTION.

| | | | | | | | | | | | |
|--|--------------------------------|---------------------------------------|-----------------------|---|--------------------|---|--------------------------------|------------------------|--|--|---------------------|
| SEE SHEET 1 EC NO: UCP2015-5331 DRAWN: IBINGHAM 2015/08/25 CHKD: DMCCOWAN 2015/08/25 APPR: DMCCOWAN 2015/09/18 | QUALITY SYMBOLS DESCRIPTION | GENERAL TOLERANCES (UNLESS SPECIFIED) | | DIMENSION STYLE MM ONLY | | SCALE 10:1 | DESIGN UNITS METRIC | THIRD ANGLE PROJECTION | | | |
| | | 4 PLACES ± --- ± --- | mm INCH | DRAWN BY TGREGORI | DATE 2013/03/25 | TITLE RECEPTACLE ASSEMBLY SPEEDSTACK CONNECTOR | | | | | |
| | | 3 PLACES ± --- ± --- | 2 PLACES ± 0.13 ± --- | CHECKED BY | DATE | | | | | | |
| | | 1 PLACE ± 0.25 ± --- | 0 PLACE ± --- ± --- | APPROVED BY JCOMERC I | | DATE 2013/04/24 | DOCUMENT NO. SD-171450-0000 | | | | SHEET NO. 3 OF 8 |
| ANGULAR ± 1/2° DRAFT WHERE APPLICABLE MUST REMAIN WITHIN DIMENSIONS | | MATERIAL NO. SEE SHEET 1 | SIZE B | THIS DRAWING CONTAINS INFORMATION THAT IS PROPRIETARY TO MOLEX INCORPORATED AND SHOULD NOT BE USED WITHOUT WRITTEN PERMISSION | | | | | | | |

PCB LAYOUT - 60 CKT

| PINOUT LEGEND | |
|---------------|----------|
| E | = EXTRA |
| G | = GROUND |
| S | = SIGNAL |



PCB LAYOUT (COMPONENT SIDE)

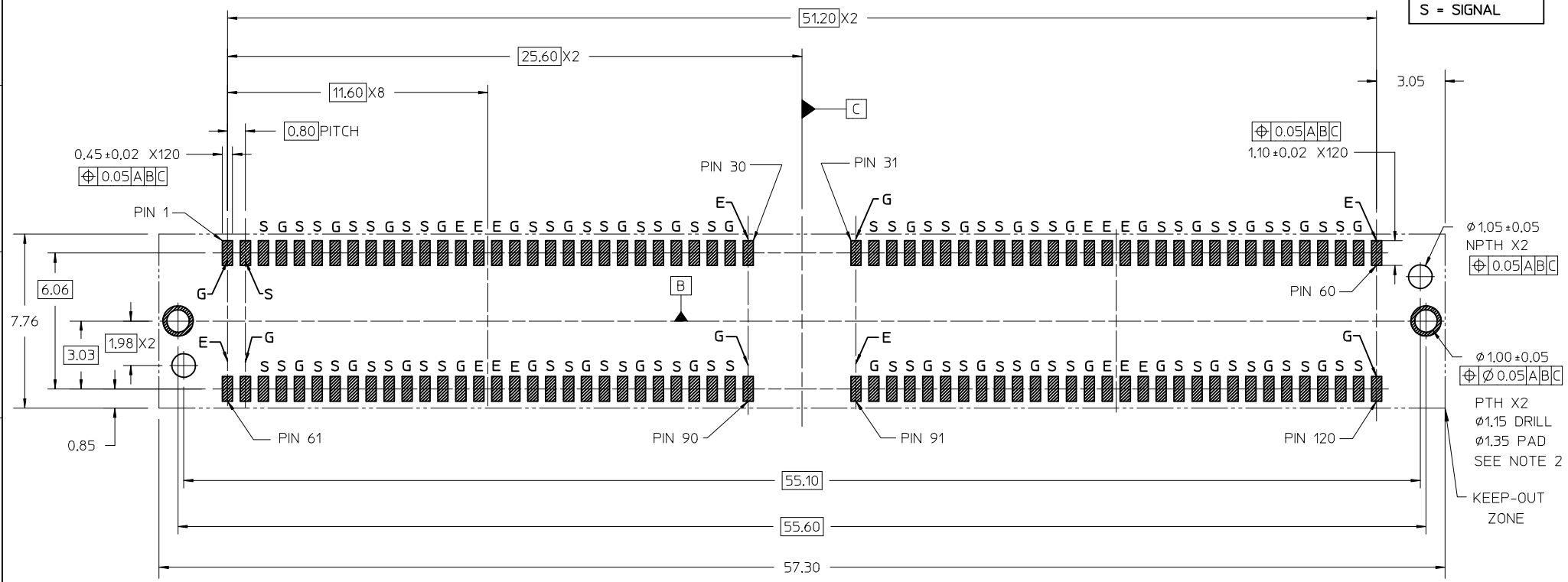
SOLDER PASTE THICKNESS: 0.15 MIN
 DATUM [A] IS THE BOTTOM SURFACE OF THE PCB

- NOTES:
- PIN NUMBERING IS FOR REFERENCE ONLY. OTHER PIN NUMBERS WILL NOT AFFECT THE OPERATION OF THE CONNECTOR.
 - RETENTION NAIL MUST BE SOLDERED ONTO THE PCB FOR PROPER CONNECTOR FUNCTION.

| | | | | | | |
|--|---------------------|---|--|---|------------------------|------------------------|
| SEE SHEET 1 EC NO: UCP2015-5331 DRAWN: IBINGHAM 2015/08/25 CHKD: DMCCOWAN 2015/08/25 APPR: DMCCOWAN 2015/09/18 | QUALITY SYMBOLS | GENERAL TOLERANCES (UNLESS SPECIFIED) | DIMENSION STYLE MM ONLY | SCALE 8:1 | DESIGN UNITS METRIC | THIRD ANGLE PROJECTION |
| | | 4 PLACES ± --- ± --- | DRAWN BY DATE TGREGORI 2013/03/25 | TITLE RECEPTACLE ASSEMBLY SPEEDSTACK CONNECTOR | | |
| | | 3 PLACES ± --- ± --- | CHECKED BY DATE | molex | | |
| | | 2 PLACES ± 0.13 ± --- | APPROVED BY DATE JCOMERC I 2013/04/24 | DOCUMENT NO. SD-171450-0000 | | |
| | | 1 PLACE ± 0.25 ± --- | MATERIAL NO. | SHEET NO. 4 OF 8 | | |
| | 0 PLACE ± --- ± --- | ANGULAR ± 1/2° DRAFT WHERE APPLICABLE MUST REMAIN WITHIN DIMENSIONS | SIZE B | THIS DRAWING CONTAINS INFORMATION THAT IS PROPRIETARY TO MOLEX INCORPORATED AND SHOULD NOT BE USED WITHOUT WRITTEN PERMISSION | | |

PCB LAYOUT - 120 CKT

| PINOUT LEGEND | |
|---------------|----------|
| E | = EXTRA |
| G | = GROUND |
| S | = SIGNAL |



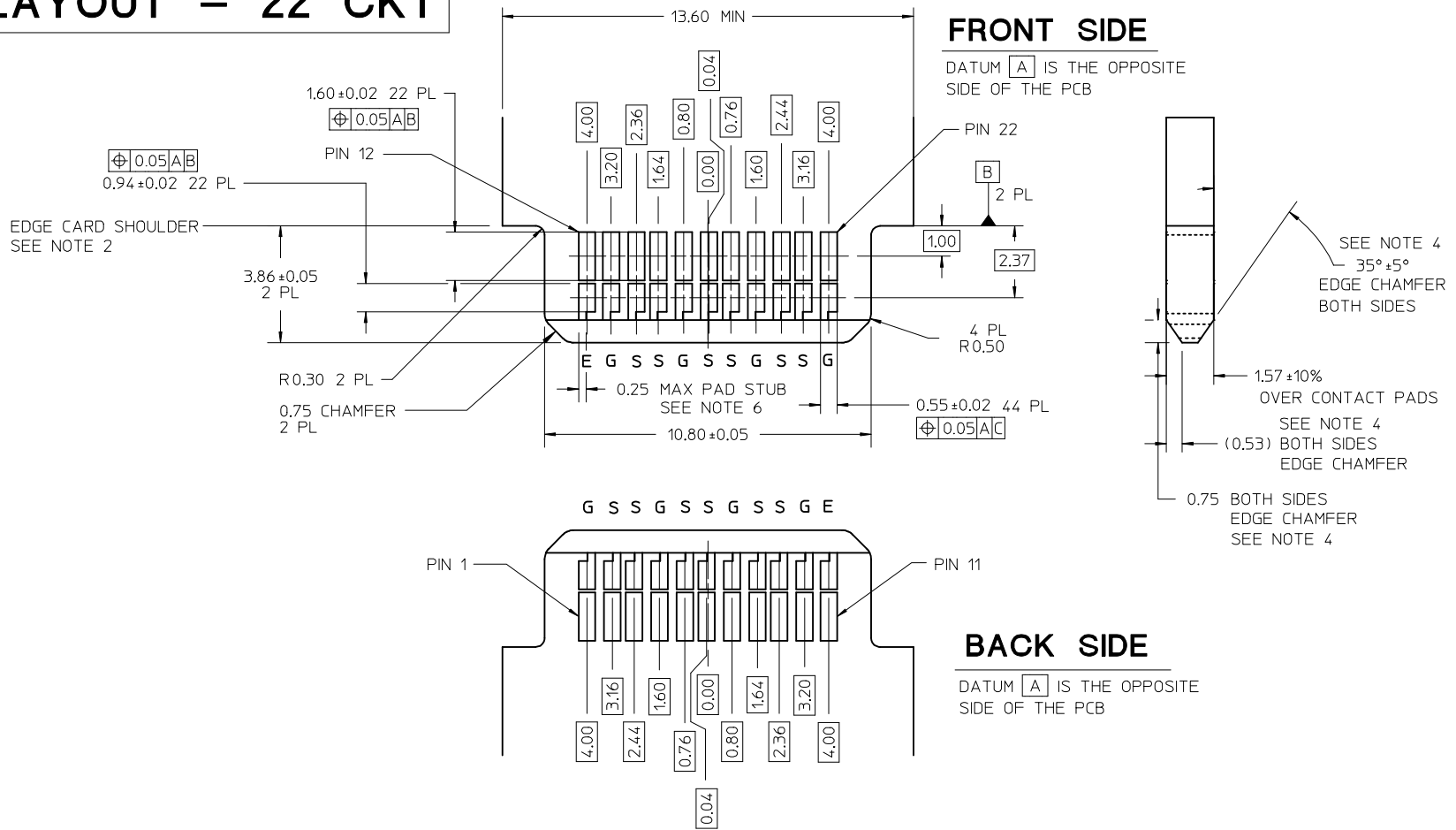
PCB LAYOUT (COMPONENT SIDE)

SOLDER PASTE THICKNESS: 0.15 MIN
 DATUM **A** IS THE BOTTOM SURFACE OF THE PCB

- NOTES:
- PIN NUMBERING IS FOR REFERENCE ONLY. OTHER PIN NUMBERS WILL NOT AFFECT THE OPERATION OF THE CONNECTOR.
 - RETENTION NAIL MUST BE SOLDERED ONTO THE PCB FOR PROPER CONNECTOR FUNCTION.

| | | | | | | | |
|--|----------------------|---|----------------------------|---|---|------------------------|---------------------|
| SEE SHEET 1 EC NO: UCP2015-5331 DRAWN: JBINGHAM 2015/08/25 CHKD: DMCCOWAN 2015/08/25 APPR: DMCCOWAN 2015/09/18 | QUALITY SYMBOLS | GENERAL TOLERANCES (UNLESS SPECIFIED) | DIMENSION STYLE MM ONLY | SCALE 6:1 | DESIGN UNITS METRIC | THIRD ANGLE PROJECTION | |
| | DESCRIPTION REV | | mm INCH | DRAWN BY DATE TGREGORI 2013/03/25 | TITLE RECEPTACLE ASSEMBLY SPEEDSTACK CONNECTOR | | SHEET NO. 5 OF 8 |
| | | | 4 PLACES ± --- ± --- | CHECKED BY DATE | APPROVED BY DATE JCOMERCI 2013/04/24 | | |
| | | | 3 PLACES ± --- ± --- | | MATERIAL NO. | | |
| | | | 2 PLACES ± 0.13 ± --- | | DOCUMENT NO. SD-171450-0000 | | |
| | 1 PLACE ± 0.25 ± --- | ANGULAR ± 1/2° DRAFT WHERE APPLICABLE MUST REMAIN WITHIN DIMENSIONS | SEE SHEET 1 | THIS DRAWING CONTAINS INFORMATION THAT IS PROPRIETARY TO MOLEX INCORPORATED AND SHOULD NOT BE USED WITHOUT WRITTEN PERMISSION | | | |
| | 0 PLACE ± --- ± --- | | SIZE B | | | | |

EDGE CARD LAYOUT - 22 CKT



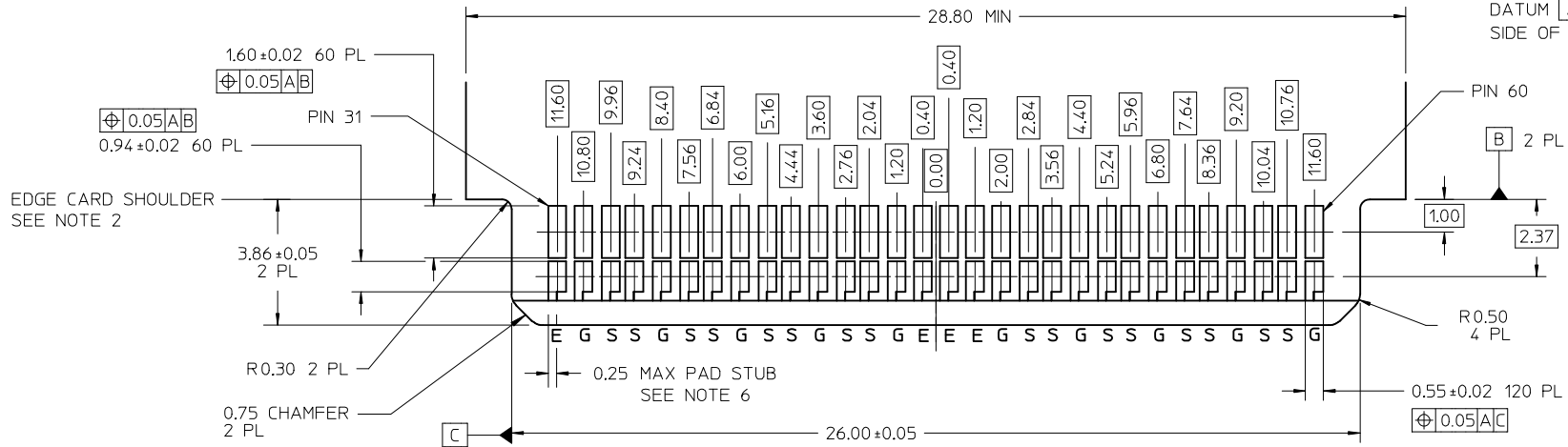
- NOTES:
- PIN NUMBERING IS FOR REFERENCE ONLY. OTHER PIN NUMBERS WILL NOT AFFECT THE OPERATION OF THE CONNECTOR.
 - EDGE CARD SHOULDERS STOP ON RECEPTACLE SHOULDERS. EDGE CARD BOTTOM DOES NOT CONTACT RECEPTACLE PCB.
 - PAD SET BACK FROM CHAMFER ENOUGH TO ACCOMMODATE LARGEST CHAMFER WITHOUT DAMAGE TO PAD EDGE.
 - CHAMFER DEPTH SHOULD BE AS LARGE AS PRACTICAL TO ENSURE CORRECT MATING TO THE RECEPTACLE.
 - ALL CHAMFERED EDGES SHOULD BE ROUNDED WHERE POSSIBLE.
 - INTERNAL PLATING BRIDGES ARE PREFERRED TO ELIMINATE PAD STUB.

| | | | | | | | |
|-------------|----------------------------|-----------------|--|---|----------------------|----------------|------------------------|
| SEE SHEET 1 | EC NO: UCP2015-5331 | QUALITY SYMBOLS | GENERAL TOLERANCES (UNLESS SPECIFIED) | DIMENSION STYLE | SCALE | DESIGN UNITS | THIRD ANGLE PROJECTION |
| | DRWN: J BINGHAM 2015/08/25 | ▽ F/0 | mm INCH | MM ONLY | 7:1 | METRIC | |
| | CHKD: DMCCOWAN 2015/08/25 | ▽ F/0 | 4 PLACES ± --- ± --- | DRAWN BY DATE | TGREGORI 2013/03/25 | TITLE | RECEPTACLE ASSEMBLY |
| | APPR: DMCCOWAN 2015/09/18 | ▽ F/0 | 3 PLACES ± --- ± --- | CHECKED BY DATE | | | SPEEDSTACK CONNECTOR |
| | | | 1 PLACE ± 0.25 ± --- | APPROVED BY DATE | JCOMERC I 2013/04/24 | | molex |
| | | | 0 PLACE ± --- ± --- | MATERIAL NO. | SEE SHEET 1 | DOCUMENT NO. | SHEET NO. |
| | | | ANGULAR ± 1/2° | SIZE | B | SD-171450-0000 | 6 OF 8 |
| | | | DRAFT WHERE APPLICABLE MUST REMAIN WITHIN DIMENSIONS | THIS DRAWING CONTAINS INFORMATION THAT IS PROPRIETARY TO MOLEX INCORPORATED AND SHOULD NOT BE USED WITHOUT WRITTEN PERMISSION | | | |

EDGECARD LAYOUT - 60 CKT

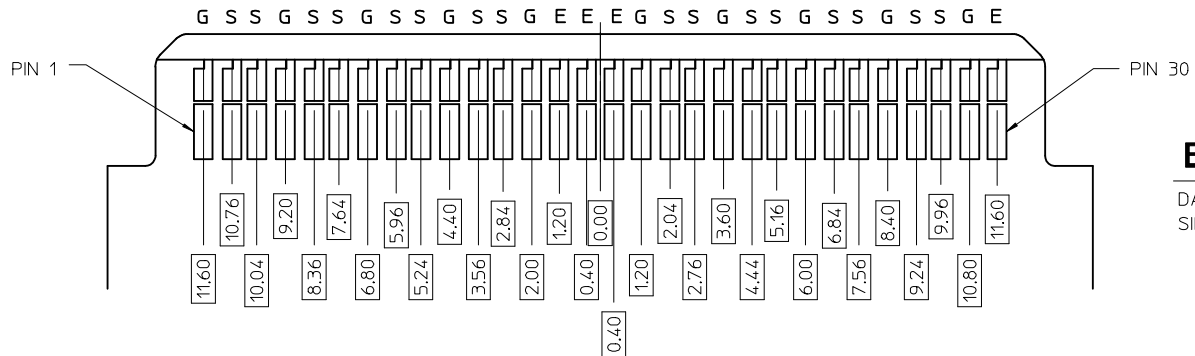
FRONT SIDE

DATUM **A** IS THE OPPOSITE SIDE OF THE PCB



BACK SIDE

DATUM **A** IS THE OPPOSITE SIDE OF THE PCB



NOTES:

- PIN NUMBERING IS FOR REFERENCE ONLY. OTHER PIN NUMBERS WILL NOT AFFECT THE OPERATION OF THE CONNECTOR.
- EDGE CARD SHOULDERS STOP ON RECEPTACLE SHOULDERS. EDGE CARD BOTTOM DOES NOT CONTACT RECEPTACLE PCB.
- PAD SET BACK FROM CHAMFER ENOUGH TO ACCOMMODATE LARGEST CHAMFER WITHOUT DAMAGE TO PAD EDGE.
- CHAMFER DEPTH SHOULD BE AS LARGE AS PRACTICAL TO ENSURE CORRECT MATING TO THE RECEPTACLE.
- ALL CHAMFERED EDGES SHOULD BE ROUNDED WHERE POSSIBLE.
- INTERNAL PLATING BRIDGES ARE PREFERRED TO ELIMINATE PAD STUB.

| | | | | | | | | |
|---|--------------------|---|--|-----------------|--------------|--------------|--|--|
| SEE SHEET 1 EC NO: UCP2015-5331 DRWN: JBRINGHAM 2015/08/25 CHKD: DMCCOWAN 2015/08/25 APPR: DMCCOWAN 2015/09/18 | DESCRIPTION REV | QUALITY SYMBOLS | GENERAL TOLERANCES (UNLESS SPECIFIED) | DIMENSION STYLE | SCALE | DESIGN UNITS | THIRD ANGLE PROJECTION | |
| | | $\nabla F=0$ $\nabla E=0$ $\nabla D=0$ | mm INCH 4 PLACES ± --- ± --- 3 PLACES ± --- ± --- 2 PLACES ± 0.13 ± --- 1 PLACE ± 0.25 ± --- 0 PLACE ± --- ± --- | MM ONLY | 7:1 | METRIC | DRAWN BY: TGREGORI DATE: 2013/03/25 CHECKED BY: _____ DATE: _____ | RECEPTACLE ASSEMBLY SPEEDSTACK CONNECTOR molex |
| | | ANGULAR ± 1/2° DRAFT WHERE APPLICABLE MUST REMAIN WITHIN DIMENSIONS | APPROVED BY: JCOMERC I DATE: 2013/04/24 | MATERIAL NO. | DOCUMENT NO. | SHEET NO. | | |
| | | SIZE B | SEE SHEET 1 | SD-171450-0000 | 7 OF 8 | | | |
| THIS DRAWING CONTAINS INFORMATION THAT IS PROPRIETARY TO MOLEX INCORPORATED AND SHOULD NOT BE USED WITHOUT WRITTEN PERMISSION | | | | | | | | |

