



Chipsmall Limited consists of a professional team with an average of over 10 year of expertise in the distribution of electronic components. Based in Hongkong, we have already established firm and mutual-benefit business relationships with customers from,Europe,America and south Asia,supplying obsolete and hard-to-find components to meet their specific needs.

With the principle of “Quality Parts,Customers Priority,Honest Operation,and Considerate Service”,our business mainly focus on the distribution of electronic components. Line cards we deal with include Microchip,ALPS,ROHM,Xilinx,Pulse,ON,Everlight and Freescale. Main products comprise IC,Modules,Potentiometer,IC Socket,Relay,Connector.Our parts cover such applications as commercial,industrial, and automotives areas.

We are looking forward to setting up business relationship with you and hope to provide you with the best service and solution. Let us make a better world for our industry!



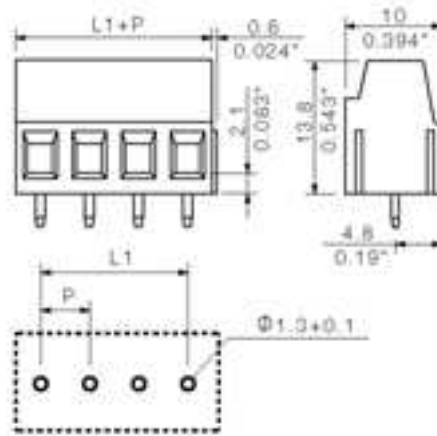
Contact us

Tel: +86-755-8981 8866 Fax: +86-755-8427 6832

Email & Skype: info@chipsmall.com Web: www.chipsmall.com

Address: A1208, Overseas Decoration Building, #122 Zhenhua RD., Futian, Shenzhen, China





General ordering data

Order No.	1716090000
Part designation	LM5.08/3/90 OR
Version	PCB terminal, Clamping yoke connection, Soldered connection, Clamping range, max.: 2.5 mm ² , Pitch: 5.08 mm, No. of poles: 3, 90°, Box
EAN	4008190365387
Qty.	500 pc(s).

System parameters

Product family	System LM
Conductor connection system	Clamping yoke connection
Fitted to PCB	Soldered connection
Outgoing direction of conductor	90°
Pitch	5.08 mm
Pitch in inch	0.2 inch
No. of poles	3
Fitted by customer	yes
Max. adjacent poles per row	24
No. of rows	1
Solder pin length	3.5 mm
Dia. of fitting hole	1.3 mm
Fitting hole tolerance	+ 0.1 mm
No. of solder pins per pole	1

System parameters

Screwdriver blade	0.6 x 3.5
Screwdriver blade standard	DIN 5264
Tightening torque, min.	0.4 Nm
Tightening torque, max.	0.5 Nm
Clamping screw	M 2.5
Stripping length	6 mm
L1 in mm	10.16 mm
L1 in inch	0.4 inch
Electric shock protection to DIN VDE 0470	IP 20
Electric shock protection to DIN VDE 0470	Safe from finger touch

Material data

Insulating material	Wemid (PA)
Colour	orange
colour chart	Similar to RAL 2000
Insulating material group	I
Flammability class UL 94	V-0
CTI	>= 600
Temperature of glow-wire test	750 °C
Duration of glow-wire test	30 S
Contact base material	Copper alloy
Contact surface	tinned
Storage temperature, min.	-25 °C
Storage temperature, max.	55 °C

Connectable conductors

Clamping range, min.	0.2 mm ²
Clamping range, max.	2.5 mm ²
AWG, min.	24
AWG, max.	14
O.D. of conductor insulation, max.	2.9 mm
Solid, min. H05(07) V-U	0.2 mm ²
Solid, max. H05(07) V-U	2.5 mm ²
Flexible, min. H05(07) V-K	0.2 mm ²
Flexible, max. H05(07) V-K	1.5 mm ²
With wire end ferrule, acc. to DIN 46 228/1, min.	0.25 mm ²
With wire end ferrule, acc. to DIN 46 228/1, max.	1.5 mm ²
w. plastic collar ferrule, DIN 46228 pt 4, min.	0.25 mm ²
w. plastic collar ferrule, DIN 46228 pt 4, max.	1.5 mm ²
Gauge to EN 60999 a x b; ø	2.4 mm x 1.5 mm; 1.9mm

DIN IEC rating data

Rated current, min. No. pins (Tu=20°C)	17.5 A
Rated current, max. No. pins (Tu=20°C)	16 A
Rated current, min. No. pins (Tu=40°C)	17.5 A
Rated current, max. No. pins (Tu=40°C)	14.2 A
Rated voltage for overvoltage class/pollution severity II/2	630 V
Rated voltage for overvoltage class/pollution severity III/2	320 V

DIN IEC rating data

Rated voltage for overvoltage class/pollution severity III/3	250 V
Rated impulse withstand voltage for overvoltage class/pollution severity II/2	4 kV
Rated impulse withstand voltage for overvoltage class/pollution severity III/2	4 kV
Rated impulse withstand voltage for overvoltage class/pollution severity III/3	4 kV
Short-time withstand current resistance	3 x 1s with 120 A

CSA rating data

Rated voltage (Use group D)	300 V
Rated current (Use group D)	10 A
AWG conductor (field wiring), min.	24
AWG conductor (field wiring), max.	14

UL 1059 rating data

Rated voltage (Use group D)	300 V
Rated current (Use group D)	10 A
AWG conductor, min.	24
AWG conductor, max.	14

Approvals

Approvals institutes



Downloads

CAD Library (P-CAD Format - Standard)	LM.lib
---------------------------------------	--------

Classifications

ETIM 2.0	NK
ETIM 3.0	EC001284
eClass 4.1	NK
eClass 5.0	NK
eClass 5.1	NK

Similar products

Order No.	Part designation	Version
1716080000	LM5.08/2/90 OR	PCB terminal, Clamping yoke connection, Soldered connection, Clamping range, max.: 2.5 mm ² , Pitch: 5.08 mm, No. of poles: 2, 90°, Box

1716020000	LM5.08/2/90 SW	PCB terminal, Clamping yoke connection, Soldered connection, Clamping range, max.: 2.5 mm ² , Pitch: 5.08 mm, No. of poles: 2, 90°, Box
1915690000	LM 5.08/2/90 GR	PCB terminal, Clamping yoke connection, Soldered connection, Clamping range, max.: 2.5 mm ² , Pitch: 5.08 mm, No. of poles: 2, 90°, Box
1716140000	LM5.08/2/90 GN	PCB terminal, Clamping yoke connection, Soldered connection, Clamping range, max.: 2.5 mm ² , Pitch: 5.08 mm, No. of poles: 2, 90°, Box
1716030000	LM5.08/3/90 SW	PCB terminal, Clamping yoke connection, Soldered connection, Clamping range, max.: 2.5 mm ² , Pitch: 5.08 mm, No. of poles: 3, 90°, Box
1915700000	LM5.08/3/90 GR	PCB terminal, Clamping yoke connection, Soldered connection, Clamping range, max.: 2.5 mm ² , Pitch: 5.08 mm, No. of poles: 2, 90°, Box
1716150000	LM5.08/3/90 GN	PCB terminal, Clamping yoke connection, Soldered connection, Clamping range, max.: 2.5 mm ² , Pitch: 5.08 mm, No. of poles: 3, 90°, Box
9994130000	LM5.08/4/90 3.5OR	PCB terminal, Clamping yoke connection, Soldered connection, Clamping range, max.: 2.5 mm ² , Pitch: 5.08 mm, No. of poles: 4, 90°, Box
9993920000	LM5.08/4/90 3.5SW	PCB terminal, Clamping yoke connection, Soldered connection, Clamping range, max.: 2.5 mm ² , Pitch: 5.08 mm, No. of poles: 4, 90°, Box
1915710000	LM 5.08/4/90 GR	PCB terminal, Clamping yoke connection, Soldered connection, Clamping range, max.: 2.5 mm ² , Pitch: 5.08 mm, No. of poles: 3, 90°, Box
1915140000	LM 5.08/4/90 GN	PCB terminal, Clamping yoke connection, Soldered connection, Clamping range, max.: 2.5 mm ² , Pitch: 5.08 mm, No. of poles: 4, 90°, Box
9994140000	LM5.08/5/90 3.5OR	PCB terminal, Clamping yoke connection, Soldered connection, Clamping range, max.: 2.5 mm ² , Pitch: 5.08 mm, No. of poles: 5, 90°, Box
9993930000	LM5.08/5/90 3.5SW	PCB terminal, Clamping yoke connection, Soldered connection, Clamping range, max.: 2.5 mm ² , Pitch: 5.08 mm, No. of poles: 5, 90°, Box
1915720000	LM 5.08/5/90 GR	PCB terminal, Clamping yoke connection, Soldered connection, Clamping range, max.: 2.5 mm ² , Pitch: 5.08 mm, No. of poles: 5, 90°, Box
1915610000	LM 5.08/5/90 GN	PCB terminal, Clamping yoke connection, Soldered connection, Clamping range, max.: 2.5 mm ² , Pitch: 5.08 mm, No. of poles: 5, 90°, Box
9994150000	LM5.08/6/90 3.5OR	PCB terminal, Clamping yoke connection, Soldered connection, Clamping range, max.: 2.5 mm ² , Pitch: 5.08 mm, No. of poles: 6, 90°, Box
9993940000	LM5.08/6/90 3.5SW	PCB terminal, Clamping yoke connection, Soldered connection, Clamping range, max.: 2.5 mm ² , Pitch: 5.08 mm, No. of poles: 6, 90°, Box
1915730000	LM 5.08/6/90 GR	PCB terminal, Clamping yoke connection, Soldered connection, Clamping range, max.: 2.5 mm ² , Pitch: 5.08 mm, No. of poles: 6, 90°, Box

1915620000	LM 5.08/6/90 GN	PCB terminal, Clamping yoke connection, Soldered connection, Clamping range, max.: 2.5 mm ² , Pitch: 5.08 mm, No. of poles: 6, 90°, Box
9994160000	LM5.08/7/90 3.5OR	PCB terminal, Clamping yoke connection, Soldered connection, Clamping range, max.: 2.5 mm ² , Pitch: 5.08 mm, No. of poles: 7, 90°, Box
9993950000	LM5.08/7/90 3.5SW	PCB terminal, Clamping yoke connection, Soldered connection, Clamping range, max.: 2.5 mm ² , Pitch: 5.08 mm, No. of poles: 7, 90°, Box
1915740000	LM 5.08/7/90 GR	PCB terminal, Clamping yoke connection, Soldered connection, Clamping range, max.: 2.5 mm ² , Pitch: 5.08 mm, No. of poles: 7, 90°, Box
1915630000	LM 5.08/7/90 GN	PCB terminal, Clamping yoke connection, Soldered connection, Clamping range, max.: 2.5 mm ² , Pitch: 5.08 mm, No. of poles: 7, 90°, Box
9994170000	LM5.08/8/90 3.5OR	PCB terminal, Clamping yoke connection, Soldered connection, Clamping range, max.: 2.5 mm ² , Pitch: 5.08 mm, No. of poles: 8, 90°, Box
9993960000	LM5.08/8/90 3.5SW	PCB terminal, Clamping yoke connection, Soldered connection, Clamping range, max.: 2.5 mm ² , Pitch: 5.08 mm, No. of poles: 8, 90°, Box
1915640000	LM 5.08/8/90 GN	PCB terminal, Clamping yoke connection, Soldered connection, Clamping range, max.: 2.5 mm ² , Pitch: 5.08 mm, No. of poles: 8, 90°, Box
1915750000	LM 5.08/8/90 GR	PCB terminal, Clamping yoke connection, Soldered connection, Clamping range, max.: 2.5 mm ² , Pitch: 5.08 mm, No. of poles: 8, 90°, Box
9994180000	LM5.08/9/90 3.5OR	PCB terminal, Clamping yoke connection, Soldered connection, Clamping range, max.: 2.5 mm ² , Pitch: 5.08 mm, No. of poles: 9, 90°, Box
9993970000	LM5.08/9/90 3.5SW	PCB terminal, Clamping yoke connection, Soldered connection, Clamping range, max.: 2.5 mm ² , Pitch: 5.08 mm, No. of poles: 9, 90°, Box
1915650000	LM 5.08/9/90 GN	PCB terminal, Clamping yoke connection, Soldered connection, Clamping range, max.: 2.5 mm ² , Pitch: 5.08 mm, No. of poles: 9, 90°, Box
1915760000	LM 5.08/9/90 GR	PCB terminal, Clamping yoke connection, Soldered connection, Clamping range, max.: 2.5 mm ² , Pitch: 5.08 mm, No. of poles: 9, 90°, Box
9994190000	LM5.08/10/90 3.5OR	PCB terminal, Clamping yoke connection, Soldered connection, Clamping range, max.: 2.5 mm ² , Pitch: 5.08 mm, No. of poles: 10, 90°, Box
9993980000	LM5.08/10/90 3.5SW	PCB terminal, Clamping yoke connection, Soldered connection, Clamping range, max.: 2.5 mm ² , Pitch: 5.08 mm, No. of poles: 10, 90°, Box
1915770000	LM 5.08/10/90 GR	PCB terminal, Clamping yoke connection, Soldered connection, Clamping range, max.: 2.5 mm ² , Pitch: 5.08 mm, No. of poles: 10, 90°, Box
1915660000	LM 5.08/10/90 GN	PCB terminal, Clamping yoke connection, Soldered connection, Clamping range, max.: 2.5 mm ² , Pitch: 5.08 mm, No. of poles: 10, 90°, Box

9994200000	LM5.08/11/90 3.5OR	PCB terminal, Clamping yoke connection, Soldered connection, Clamping range, max.: 2.5 mm ² , Pitch: 5.08 mm, No. of poles: 11, 90°, Box
9993990000	LM5.08/11/90 3.5SW	PCB terminal, Clamping yoke connection, Soldered connection, Clamping range, max.: 2.5 mm ² , Pitch: 5.08 mm, No. of poles: 11, 90°, Box
1915780000	LM 5.08/11/90 GR	PCB terminal, Clamping yoke connection, Soldered connection, Clamping range, max.: 2.5 mm ² , Pitch: 5.08 mm, No. of poles: 11, 90°, Box
1915670000	LM 5.08/11/90 GN	PCB terminal, Clamping yoke connection, Soldered connection, Clamping range, max.: 2.5 mm ² , Pitch: 5.08 mm, No. of poles: 11, 90°, Box
9994210000	LM5.08/12/90 3.5OR	PCB terminal, Clamping yoke connection, Soldered connection, Clamping range, max.: 2.5 mm ² , Pitch: 5.08 mm, No. of poles: 12, 90°, Box
9994000000	LM5.08/12/90 3.5SW	PCB terminal, Clamping yoke connection, Soldered connection, Clamping range, max.: 2.5 mm ² , Pitch: 5.08 mm, No. of poles: 12, 90°, Box
1915790000	LM 5.08/12/90 GR	PCB terminal, Clamping yoke connection, Soldered connection, Clamping range, max.: 2.5 mm ² , Pitch: 5.08 mm, No. of poles: 12, 90°, Box
1915680000	LM 5.08/12/90 GN	PCB terminal, Clamping yoke connection, Soldered connection, Clamping range, max.: 2.5 mm ² , Pitch: 5.08 mm, No. of poles: 12, 90°, Box
9994220000	LM5.08/13/90 3.5OR	PCB terminal, Clamping yoke connection, Soldered connection, Clamping range, max.: 2.5 mm ² , Pitch: 5.08 mm, No. of poles: 13, 90°, Box
9994010000	LM5.08/13/90 3.5SW	PCB terminal, Clamping yoke connection, Soldered connection, Clamping range, max.: 2.5 mm ² , Pitch: 5.08 mm, No. of poles: 13, 90°, Box
9994230000	LM5.08/14/90 3.5OR	PCB terminal, Clamping yoke connection, Soldered connection, Clamping range, max.: 2.5 mm ² , Pitch: 5.08 mm, No. of poles: 14, 90°, Box
9994020000	LM5.08/14/90 3.5SW	PCB terminal, Clamping yoke connection, Soldered connection, Clamping range, max.: 2.5 mm ² , Pitch: 5.08 mm, No. of poles: 14, 90°, Box
9994240000	LM5.08/15/90 3.5OR	PCB terminal, Clamping yoke connection, Soldered connection, Clamping range, max.: 2.5 mm ² , Pitch: 5.08 mm, No. of poles: 15, 90°, Box
9994030000	LM5.08/15/90 3.5SW	PCB terminal, Clamping yoke connection, Soldered connection, Clamping range, max.: 2.5 mm ² , Pitch: 5.08 mm, No. of poles: 15, 90°, Box
9994250000	LM5.08/16/90 3.5OR	PCB terminal, Clamping yoke connection, Soldered connection, Clamping range, max.: 2.5 mm ² , Pitch: 5.08 mm, No. of poles: 16, 90°, Box
9994040000	LM5.08/16/90 3.5SW	PCB terminal, Clamping yoke connection, Soldered connection, Clamping range, max.: 2.5 mm ² , Pitch: 5.08 mm, No. of poles: 16, 90°, Box
9994260000	LM5.08/17/90 3.5OR	PCB terminal, Clamping yoke connection, Soldered connection, Clamping range, max.: 2.5 mm ² , Pitch: 5.08 mm, No. of poles: 17, 90°, Box

9994050000	LM5.08/17/90 3.5SW	PCB terminal, Clamping yoke connection, Soldered connection, Clamping range, max.: 2.5 mm ² , Pitch: 5.08 mm, No. of poles: 17, 90°, Box
9994270000	LM5.08/18/90 3.5OR	PCB terminal, Clamping yoke connection, Soldered connection, Clamping range, max.: 2.5 mm ² , Pitch: 5.08 mm, No. of poles: 18, 90°, Box
9994060000	LM5.08/18/90 3.5SW	PCB terminal, Clamping yoke connection, Soldered connection, Clamping range, max.: 2.5 mm ² , Pitch: 5.08 mm, No. of poles: 18, 90°, Box
9994280000	LM5.08/19/90 3.5OR	PCB terminal, Clamping yoke connection, Soldered connection, Clamping range, max.: 2.5 mm ² , Pitch: 5.08 mm, No. of poles: 19, 90°, Box
9994070000	LM5.08/19/90 3.5SW	PCB terminal, Clamping yoke connection, Soldered connection, Clamping range, max.: 2.5 mm ² , Pitch: 5.08 mm, No. of poles: 19, 90°, Box
9994290000	LM5.08/20/90 3.5OR	PCB terminal, Clamping yoke connection, Soldered connection, Clamping range, max.: 2.5 mm ² , Pitch: 5.08 mm, No. of poles: 20, 90°, Box
9994080000	LM5.08/20/90 3.5SW	PCB terminal, Clamping yoke connection, Soldered connection, Clamping range, max.: 2.5 mm ² , Pitch: 5.08 mm, No. of poles: 20, 90°, Box
9994300000	LM5.08/21/90 3.5OR	PCB terminal, Clamping yoke connection, Soldered connection, Clamping range, max.: 2.5 mm ² , Pitch: 5.08 mm, No. of poles: 21, 90°, Box
9994090000	LM5.08/21/90 3.5SW	PCB terminal, Clamping yoke connection, Soldered connection, Clamping range, max.: 2.5 mm ² , Pitch: 5.08 mm, No. of poles: 21, 90°, Box
9994310000	LM5.08/22/90 3.5OR	PCB terminal, Clamping yoke connection, Soldered connection, Clamping range, max.: 2.5 mm ² , Pitch: 5.08 mm, No. of poles: 22, 90°, Box
9994100000	LM5.08/22/90 3.5SW	PCB terminal, Clamping yoke connection, Soldered connection, Clamping range, max.: 2.5 mm ² , Pitch: 5.08 mm, No. of poles: 22, 90°, Box
9994320000	LM5.08/23/90 3.5OR	PCB terminal, Clamping yoke connection, Soldered connection, Clamping range, max.: 2.5 mm ² , Pitch: 5.08 mm, No. of poles: 23, 90°, Box
9994110000	LM5.08/23/90 3.5SW	PCB terminal, Clamping yoke connection, Soldered connection, Clamping range, max.: 2.5 mm ² , Pitch: 5.08 mm, No. of poles: 23, 90°, Box
9994330000	LM5.08/24/90 3.5OR	PCB terminal, Clamping yoke connection, Soldered connection, Clamping range, max.: 2.5 mm ² , Pitch: 5.08 mm, No. of poles: 24, 90°, Box
9994120000	LM5.08/24/90 3.5SW	PCB terminal, Clamping yoke connection, Soldered connection, Clamping range, max.: 2.5 mm ² , Pitch: 5.08 mm, No. of poles: 24, 90°, Box