



Chipsmall Limited consists of a professional team with an average of over 10 year of expertise in the distribution of electronic components. Based in Hongkong, we have already established firm and mutual-benefit business relationships with customers from,Europe,America and south Asia,supplying obsolete and hard-to-find components to meet their specific needs.

With the principle of “Quality Parts,Customers Priority,Honest Operation,and Considerate Service”,our business mainly focus on the distribution of electronic components. Line cards we deal with include Microchip,ALPS,ROHM,Xilinx,Pulse,ON,Everlight and Freescale. Main products comprise IC,Modules,Potentiometer,IC Socket,Relay,Connector.Our parts cover such applications as commercial,industrial, and automotives areas.

We are looking forward to setting up business relationship with you and hope to provide you with the best service and solution. Let us make a better world for our industry!



## Contact us

Tel: +86-755-8981 8866 Fax: +86-755-8427 6832

Email & Skype: info@chipsmall.com Web: www.chipsmall.com

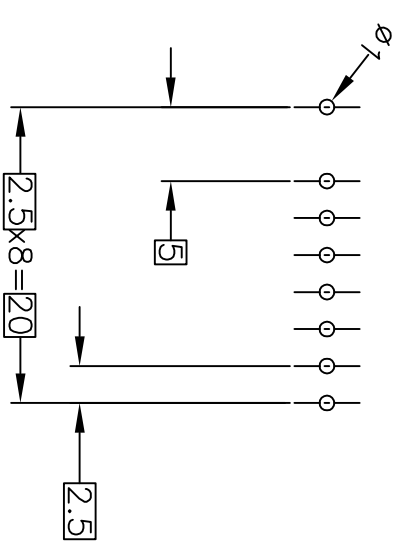
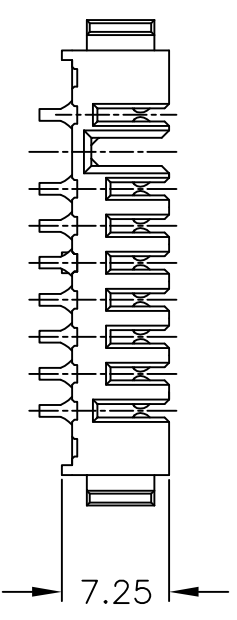
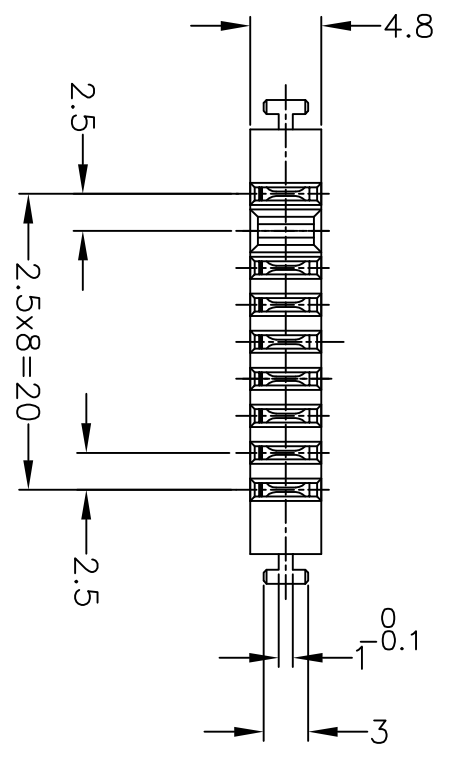
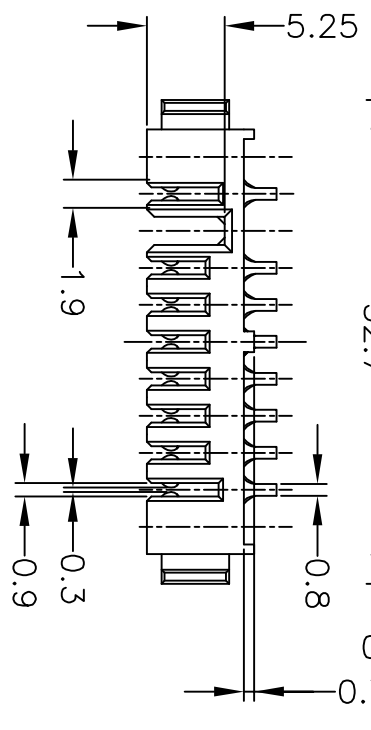
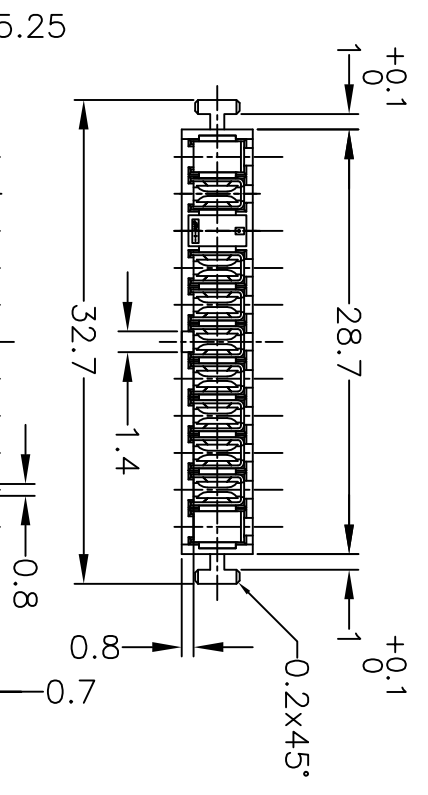
Address: A1208, Overseas Decoration Building, #122 Zhenhua RD., Futian, Shenzhen, China



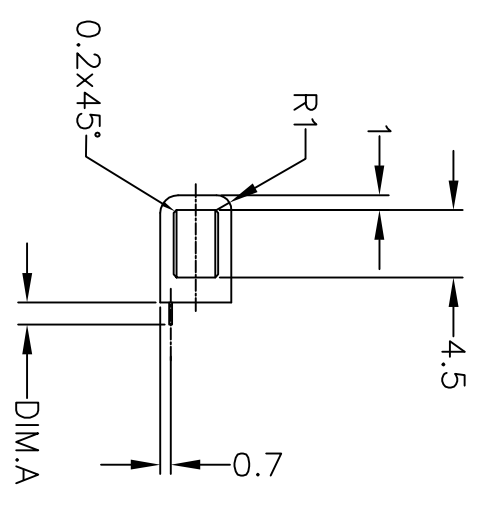
THIS DRAWING IS UNPUBLISHED.  
 RELEASED FOR PUBLICATION 2002.  
 © COPYRIGHT 2002 BY TYCO ELECTRONICS CORPORATION. ALL RIGHTS RESERVED.

LOC	DIST	REVISONS	
ES	00	P	LTR
		B	REVISED
		DESCRIPTION	DATE
		ECR-07-024049	100CT07
		DWN	APVD
		L.L	S.Y

1717478-1: AS SHOWN



基板取付参考寸法  
 REFERENCE P.C. BOARD LAYOUT  
 P.C. BOARD THK 0.8~1.2  
 (VIEW FROM CONNECTOR MOUNTING SIDE)

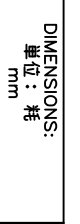


- △ 材料
  - ・ハウジング: 熱可塑性樹脂、UL94V-0、黒
  - ・コンタクト: 銅合金
  - ・仕上げ
  - ・コンタクト: ニッケル下地めっき
  - ・接触部 金めっき
  - ・半田付け部 銀めっき

- △ MATERIAL
  - ・ HOUSING: THERMOPLASTIC RESIN, UL94V-0, BLACK
  - ・ CONTACT: COPPER ALLOY
- △ FINISH
  - ・ CONTACT: Ni ALL OVER UNDER PL.
  - ・ GOLD PL. AT CONTACT AREA
  - ・ TIN PL. AT LEAD AREA

WIRE RANGE 包含電線断面積	INSULATION DIA 被覆外径
2.0 MAX.	1717478-2
15 MAX.	1717478-1
DIM.A	PART NUMBER

THIS DRAWING IS A CONTROLLED DOCUMENT.



DIMENSIONS:  
 単位: 耗  
 mm

TOLERANCES UNLESS OTHERWISE SPECIFIED: 一般公差	0 PLC ± 0.3
	1 PLC ± 0.3
	2 PLC ± 0.3
	3 PLC ± 0.3
	4 PLC ± 0.3
	ANGLES ± 3

DWN	290CT03	NAME	2.5mm PITCH BATTERY CONNECTOR
T.KATANO	300CT03	製品規格	RECEPTACLE ASSEMBLY 8POS.
T.KIMURA	300CT03	APVD	
K.IKEGAMI		PRODUCT SPEC	
		APPLICATION SPEC	
		取付適用規格	
		WEIGHT	

MATERIAL	材料	△ 1	RESTRICTED TO
FINISH	仕上	△ 2	
RESTRICTED CUSTOMER			
SIZE	CAGE CODE	DRAWING NO	
A3	00779	1717478	
SCALE	尺度	SHEET	REV
2:1	2:1	1 of 1	B