



Chipsmall Limited consists of a professional team with an average of over 10 year of expertise in the distribution of electronic components. Based in Hongkong, we have already established firm and mutual-benefit business relationships with customers from,Europe,America and south Asia,supplying obsolete and hard-to-find components to meet their specific needs.

With the principle of “Quality Parts,Customers Priority,Honest Operation,and Considerate Service”,our business mainly focus on the distribution of electronic components. Line cards we deal with include Microchip,ALPS,ROHM,Xilinx,Pulse,ON,Everlight and Freescale. Main products comprise IC,Modules,Potentiometer,IC Socket,Relay,Connector.Our parts cover such applications as commercial,industrial, and automotives areas.

We are looking forward to setting up business relationship with you and hope to provide you with the best service and solution. Let us make a better world for our industry!



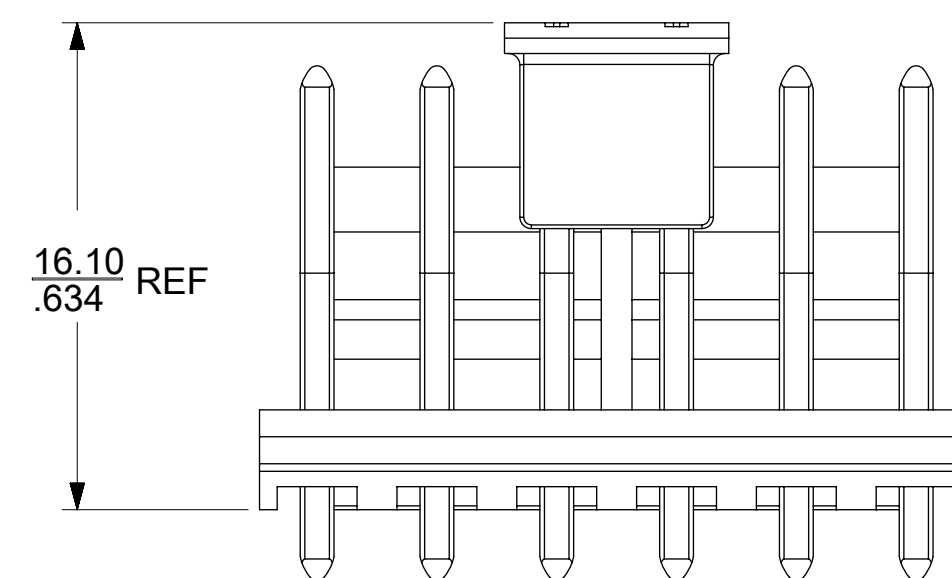
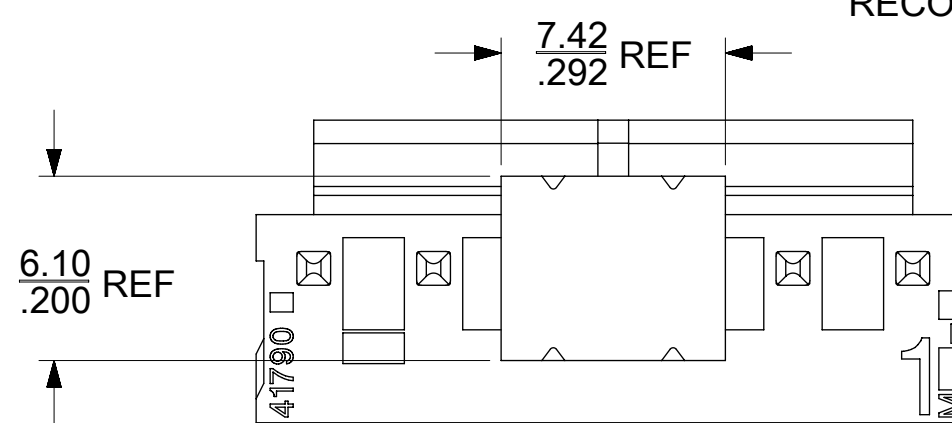
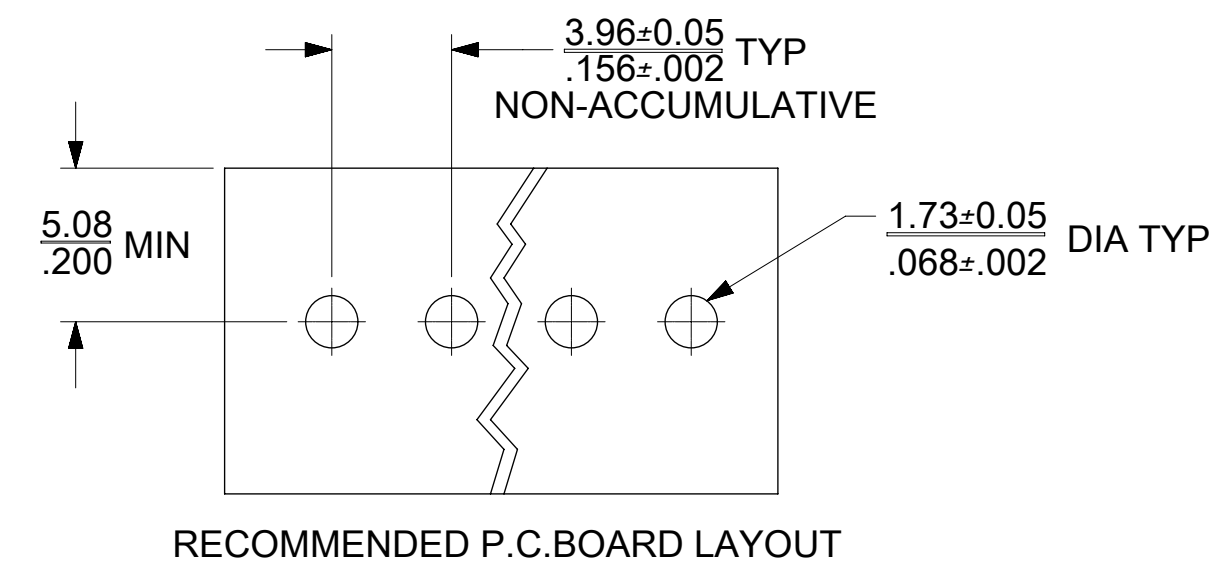
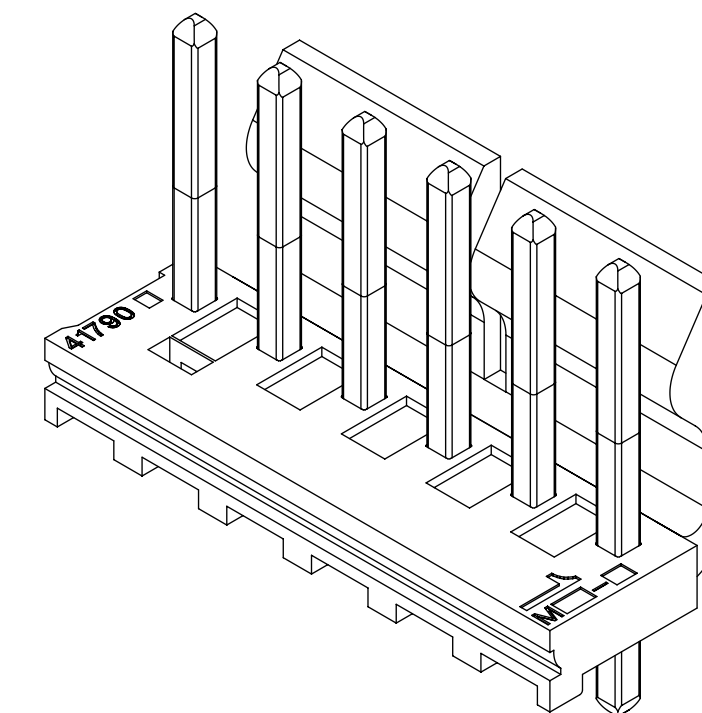
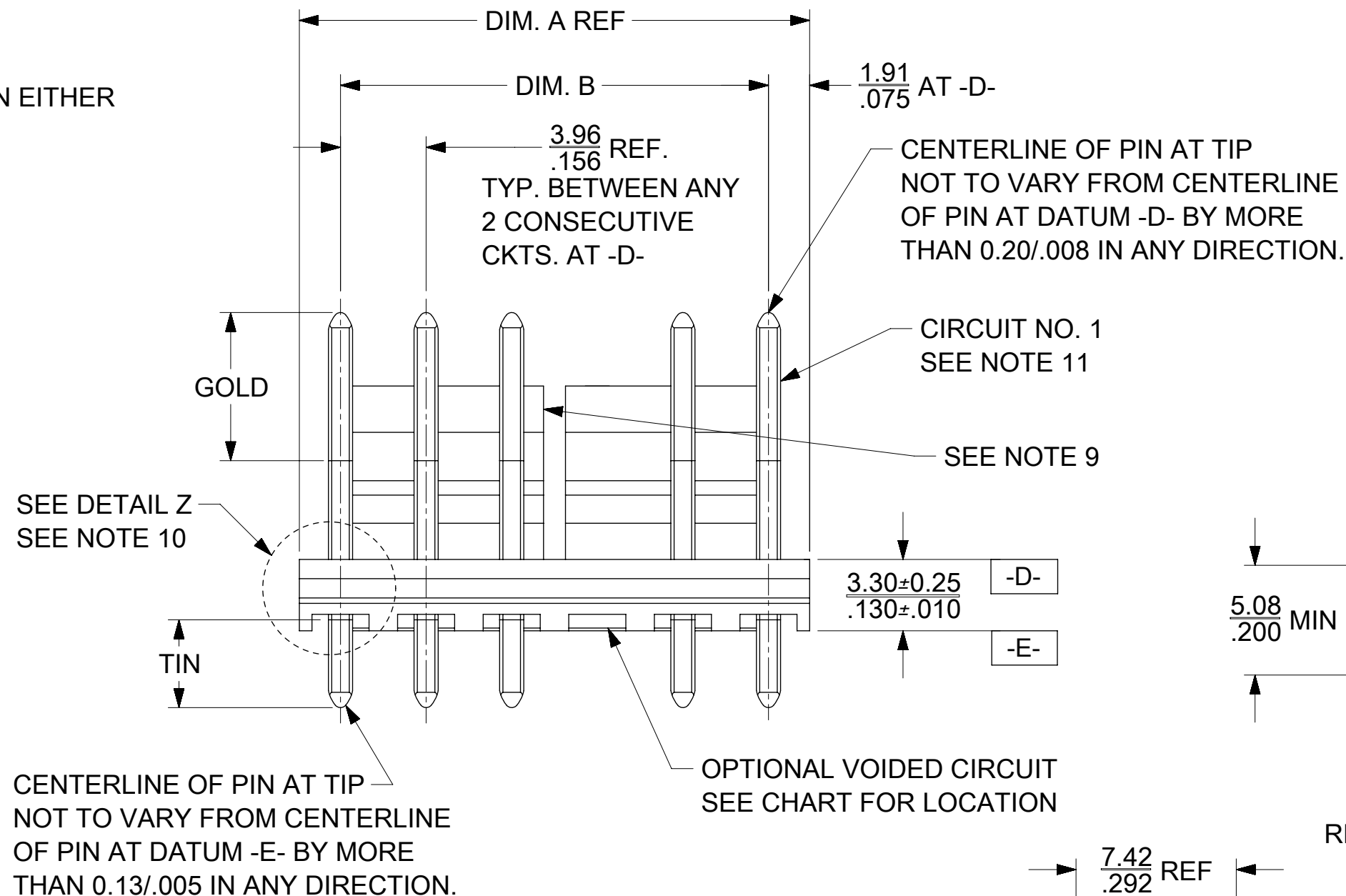
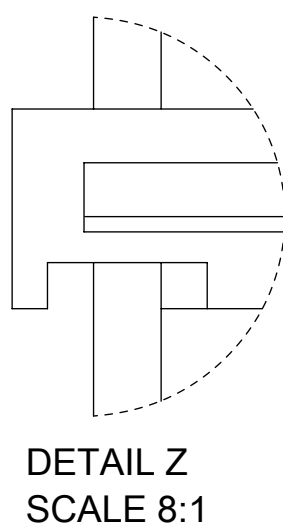
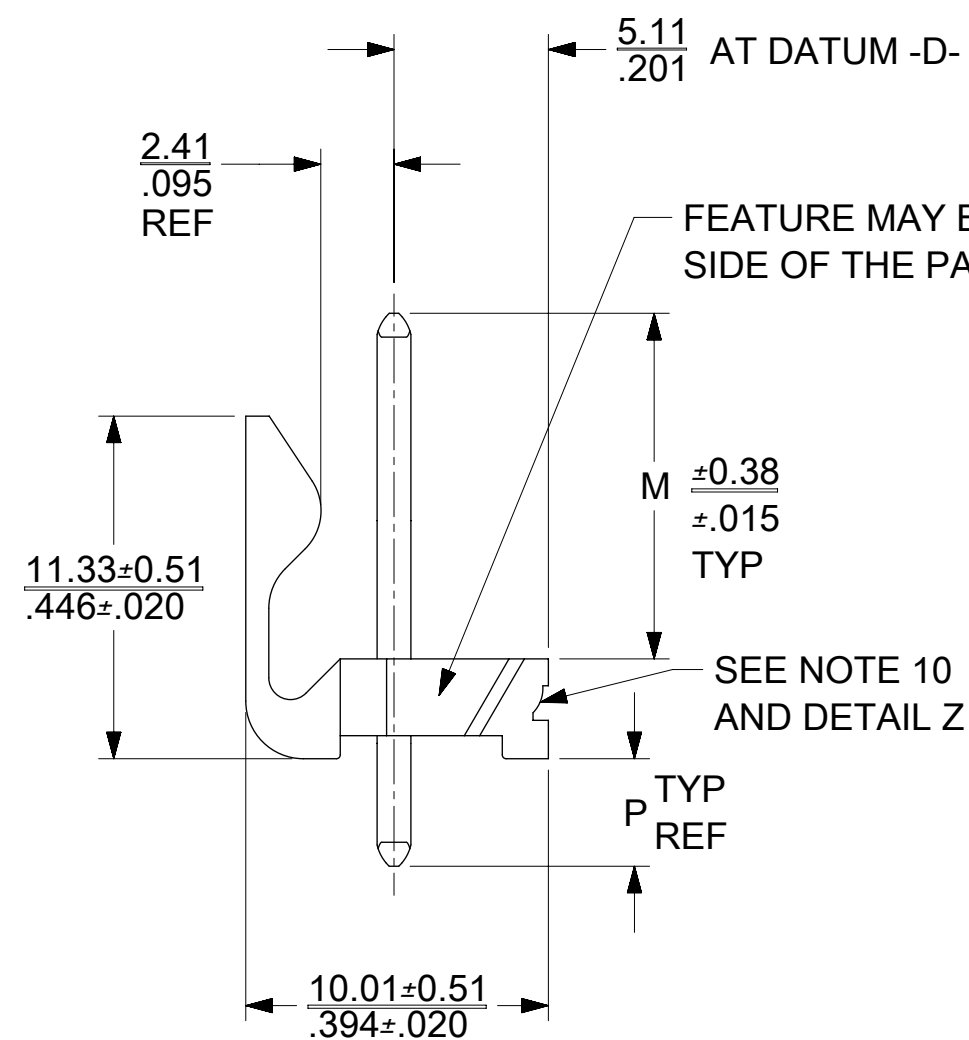
Contact us

Tel: +86-755-8981 8866 Fax: +86-755-8427 6832

Email & Skype: info@chipsmall.com Web: www.chipsmall.com

Address: A1208, Overseas Decoration Building, #122 Zhenhua RD., Futian, Shenzhen, China





OPTIONAL PICK AND PLACE CAP FOR TAPE AND REEL PACKAGING

CIRCUIT SIZE	DIM. A	DIM. B	SLOT LOCATION BETWEEN CIRCUITS
2	7.77 .306	3.96±0.05 .156±.002	NONE
3	11.73 .462	7.92±0.10 .312±.004	NONE
4	15.70 .618	11.89±0.15 .468±.006	NONE
5	19.66 .774	15.85±0.15 .624±.006	NONE
6	23.62 .930	19.81±0.18 .780±.007	3 & 4
7	27.58 1.086	23.77±0.18 .936±.007	4 & 5
8	31.55 1.242	27.74±0.20 1.092±.008	4 & 5
9	35.51 1.398	31.70±0.20 1.248±.008	5 & 6
10	39.47 1.554	35.66±0.23 1.404±.009	5 & 6
11	43.43 1.710	39.62±0.23 1.560±.009	6 & 7
12	47.40 1.866	43.59±0.25 1.716±.010	4 & 5 8 & 9

NOTES:

- MATERIAL: HOUSING: NYLON, UL94V-1, COLOR: BLACK
PINS: BRASS
- FINISH:
(197-TIN) = OVERALL REFLOWED MATTE TIN: 0.00152/.000060 MIN.
OVER 0.00127/.000050 MIN. NICKEL OVERALL.
(208) = SELECT GOLD: 0.00038/.000015 MIN,
SELECT MATTE TIN: 0.00254/.000100 MIN,
BOTH OVER 0.00127/.000050 MIN NICKEL.
(228) = SELECT GOLD: 0.00076/.000030 MIN,
SELECT MATTE TIN: 0.00254/.000100 MIN,
BOTH OVER 0.00127/.000050 MIN NICKEL.
- PRODUCT SPECIFICATION: PS-171813-0001, PS-171813-0002
- PACKAGING INFORMATION: SEE CHARTS.
- SOLDERABILITY: PER SMES-152.
- PIN PUSH-OUT FORCE: PRIOR TO SOLDERING, A 3 LB. MINIMUM FORCE IN EITHER DIRECTION
- PARTS ARE STACKABLE END TO END ON 3.96/.156 CENTERS.
- THIS PART CONFORMS TO CLASS B REQUIREMENTS OF COSMETIC SPECIFICATION PS-45499-002.
- SLOTS ON BACKWALL ARE BETWEEN CIRCUITS. SEE CHART FOR LOCATION.
- FEATURE MAY OR MAY NOT EXTEND ACROSS THE ENTIRE FACE OF THE PART. SEE DETAIL Z.
- CIRCUIT 1 DESIGNATION IS USED TO DEFINE VOID LOCATION. CIRCUIT 1 MAY OR MAY NOT LINE UP WITH CIRCUIT 1 ON THE MATING HOUSING.
- THE PARTS LISTED ON THIS DRAWING ARE CONSTRUCTED TO MEET THE REQUIREMENT FOR DIRECT SUPPORT OF UNINSULATED LIVE PARTS AS DESCRIBED IN UL508C.

THIS DRAWING CONTAINS INFORMATION THAT IS PROPRIETARY TO MOLEX ELECTRONIC TECHNOLOGIES, LLC AND SHOULD NOT BE USED WITHOUT WRITTEN PERMISSION

ADD NOTE 12 2017/02/03 2017/02/06 2017/02/09	GENERAL TOLERANCES (UNLESS SPECIFIED)		DIMENSION UNITS	SCALE	
	MM	INCH	MM/IN	4:1	
	4 PLACES ±	±	DRWN BY	DATE	
	3 PLACES ±	± 0.01	MKIPPER	2012/09/13	
EC NO: 113073 DRWN: BAPPELDORN CHKD: JBELL REV APPR: FSMITH	2 PLACES ±	± 0.25 ± 0.015	CHK'D BY	DATE	KK RPC 156 FRICTION LOCK VERTICAL HEADER ASSEMBLY SOLID BODY W/O PEGS
	1 PLACES ±	± 0.38 ±	SSOUSEK	2012/09/13	
	0 PLACES ±	±	APPR BY	DATE	
	ANGULAR TOL = 0.5		FSMITH	2013/06/11	
DRAFT WHERE APPLICABLE MUST REMAIN WITHIN DIMENSIONS	DRAWING SIZE		THIRD ANGLE PROJECTION	PRODUCT CUSTOMER DRAWING	
	C			SERIES	MATERIAL NUMBER
RELEASE STATUS	RELEASE DATE	171813		SEE CHART	CUSTOMER
		DOCUMENT NUMBER		DOC TYPE	DOC PART
		SD-171813-0001		PSD	000
		SHEET NUMBER		1 OF *	

OPTIONS	Group	171813-0002/0012	Group	171813-1002/1012	Group	171813-2002/2012
	Plating:	197 – TIN	Plating:	208 – 15 GOLD	Plating:	228 – 30 GOLD
	Pin Length L	17.02 / .670	Pin Length L	17.02 / .670	Pin Length L	17.02 / .670
	Mating M	11.38 / .448	Mating M	11.38 / .448	Mating M	11.38 / .448
	Gold Loc G	N/A	Gold Loc G	6.10 / .240	Gold Loc G	6.10 / .240
	PC Tail P	2.37 / .092	PC Tail P	2.37 / .092	PC Tail P	2.37 / .092
	Tin Loc T	OVERALL	Tin Loc T	5.08 / .200	Tin Loc T	5.08 / .200
	Voided Ckts	NONE	Voided Ckts	NONE	Voided Ckts	NONE
	Pack Per	PK-41791-001 BULK	Pack Per	PK-41791-001 BULK	Pack Per	PK-41791-001 BULK
Ckts	Material No		Material No		Material No	
2	171813-0002		171813-1002		171813-2002	
3	171813-0003		171813-1003		171813-2003	
4	171813-0004		171813-1004		171813-2004	
5	171813-0005		171813-1005		171813-2005	
6	171813-0006		171813-1006		171813-2006	
7	171813-0007		171813-1007		171813-2007	
8	171813-0008		171813-1008		171813-2008	
9	171813-0009		171813-1009		171813-2009	
10	171813-0010		171813-1010		171813-2010	
11	171813-0011		171813-1011		171813-2011	
12	171813-0012		171813-1012		171813-2012	

REV: A5	ECR/ECN INFORMATION	TITLE: KK RPC 156 HEADER ASSEMBLY FRICTION LOCK VERTICAL SOLID BODY W/O PEGS	SHEET No.
	EC NO.: UCP2016-1946		- 2 -
DATE: 5/16/2016			
DOCUMENT NUMBER: SD-171813-0001	CREATED / REVISED BY: MKIPPER	CHECKED BY: JBELL	APPROVED BY: FSMITH-ROEMER

OPTIONS	Group	171813-0102/0112	Group	171813-1102/1112	Group	
	Plating:	197 – TIN	Plating:	208 – 15 GOLD	Plating:	
	Pin Length L	18.29 / .720	Pin Length L	18.29 / .720	Pin Length L	
	Mating M	11.43 / .450	Mating M	11.43 / .450	Mating M	
	Gold Loc G	N/A	Gold Loc G	6.86 / .270	Gold Loc G	
	PC Tail P	3.56 / .140	PC Tail P	3.56 / .140	PC Tail P	
	Tin Loc T	OVERALL	Tin Loc T	4.06 / .160	Tin Loc T	
	Voided Ckts	NONE	Voided Ckts	NONE	Voided Ckts	
	Pack Per	PK-41791-001 BULK	Pack Per	PK-41791-001 BULK	Pack Per	
Ckts	Material No		Material No		Material No	
2	171813-0102		171813-1102			
3	171813-0103		171813-1103			
4	171813-0104		171813-1104			
5	171813-0105		171813-1105			
6	171813-0106		171813-1106			
7	171813-0107		171813-1107			
8	171813-0108		171813-1108			
9	171813-0109		171813-1109			
10	171813-0110		171813-1110			
11	171813-0111		171813-1111			
12	171813-0112		171813-1112			

A5	REV:	<u>ECR/ECN INFORMATION</u>	<u>TITLE:</u>	KK RPC 156 HEADER ASSEMBLY FRICTION LOCK VERTICAL SOLID BODY W/O PEGS	<u>SHEET No.</u>
		EC NO.: UCP2016-1946			- 3 -
		DATE: 5/16/2016			
<u>DOCUMENT NUMBER:</u>		<u>CREATED / REVISED BY:</u>	<u>CHECKED BY:</u>	<u>APPROVED BY:</u>	
SD-171813-0001		MKIPPER	JBELL	FSMITH-ROEMER	

OPTIONS	Group	171813-3002/3012	Group	171813-4002/4012	Group	
	Plating:	197 – TIN	Plating:	208 – 15 GOLD	Plating:	
	Pin Length L	17.02 / .670	Pin Length L	17.02 / .670	Pin Length L	
	Mating M	11.38 / .448	Mating M	11.38 / .448	Mating M	
	Gold Loc G	N/A	Gold Loc G	6.10 / .240	Gold Loc G	
	PC Tail P	2.37 / .092	PC Tail P	2.37 / .092	PC Tail P	
	Tin Loc T	OVERALL	Tin Loc T	5.08 / .200	Tin Loc T	
	Voided Ckts	NONE	Voided Ckts	NONE	Voided Ckts	
	Pack Per	PK-171813-0001 TAPE AND REEL W/CAP	Pack Per	PK-171813-0001 TAPE AND REEL W/CAP	Pack Per	
Ckts	Material No		Material No		Material No	
2	171813-3002		171813-4002			
3	171813-3003		171813-4003			
4	171813-3004		171813-4004			
5	171813-3005		171813-4005			
6	171813-3006		171813-4006			
7	171813-3007		171813-4007			
8	171813-3008		171813-4008			
9	171813-3009		171813-4009			
10	171813-3010		171813-4010			
11	171813-3011		171813-4011			
12	171813-3012		171813-4012			

A5	REV:	<u>ECR/ECN INFORMATION</u>	KK RPC 156 HEADER ASSEMBLY FRICTION LOCK VERTICAL SOLID BODY W/O PEGS	<u>SHEET No.</u> - 4 -
		EC NO.: UCP2016-1946		
		DATE: 5/16/2016		
<u>DOCUMENT NUMBER:</u> SD-171813-0001		<u>CREATED / REVISED BY:</u> MKIPPER	<u>CHECKED BY:</u> JBELL	<u>APPROVED BY:</u> FSMITH-ROEMER

OPTIONS	Group		Group		Group		Group	171813-9994
	Plating:		Plating:		Plating:		Plating:	197 – TIN
	Pin Length L		Pin Length L		Pin Length L		Pin Length L	18.29 / .720
	Mating M		Mating M		Mating M		Mating M	11.43 / .450
	Gold Loc G		Gold Loc G		Gold Loc G		Gold Loc G	N/A
	PC Tail P		PC Tail P		PC Tail P		PC Tail P	3.56 / .140
	Tin Loc T		Tin Loc T		Tin Loc T		Tin Loc T	OVERALL
	Voided Ckts		Voided Ckts		Voided Ckts		Voided Ckts	3
	Pack Per		Pack Per		Pack Per		Pack Per	PK-41791-001 BULK
Ckts	Material No	Material No	Material No	Material No	Material No	Material No	Material No	
2								
3								
4								
5								
6								
7								
8								
9								
10								
11								
12								

A5	REV: <u>ECR/ECN INFORMATION</u>	KK RPC 156 HEADER ASSEMBLY FRICTION LOCK VERTICAL SOLID BODY W/O PEGS	<u>SHEET No.</u> - 5 -
	EC NO.: UCP2016-1946 DATE: 5/16/2016		
<u>DOCUMENT NUMBER:</u> SD-171813-0001	<u>CREATED / REVISED BY:</u> MKIPPER	<u>CHECKED BY:</u> JBELL	<u>APPROVED BY:</u> FSMITH-ROEMER

OPTIONS	Group	171813-9995	Group	171813-9996	Group	171813-9997	Group	171813-9998
	Plating:	208 – 15 GOLD	Plating:	197 – TIN	Plating:	197 – TIN	Plating:	197 – TIN
	Pin Length L	17.02 / .670	Pin Length L	17.02 / .670	Pin Length L	17.02 / .670	Pin Length L	18.29 / .720
	Mating M	11.38 / .448	Mating M	11.38 / .448	Mating M	11.38 / .448	Mating M	11.43 / .450
	Gold Loc G	6.10 / .240	Gold Loc G	N/A	Gold Loc G	N/A	Gold Loc G	N/A
	PC Tail P	2.37 / .092	PC Tail P	2.37 / .092	PC Tail P	2.37 / .092	PC Tail P	3.56 / .140
	Tin Loc T	5.08 / .200	Tin Loc T	OVERALL	Tin Loc T	OVERALL	Tin Loc T	OVERALL
	Voided Ckts	3	Voided Ckts	2, 4	Voided Ckts	2, 4, 6	Voided Ckts	2
	Pack Per	PK-41791-001 BULK	Pack Per	PK-41791-001 BULK	Pack Per	PK-41791-001 BULK	Pack Per	PK-41791-001 BULK
Ckts	Material No		Material No		Material No		Material No	
2								
3							171813-9998	
4								
5	171813-9995		171813-9996					
6								
7					171813-9997			
8								
9								
10								
11								
12								

A5	REV: ECR/ECN INFORMATION	KK RPC 156 HEADER ASSEMBLY FRICTION LOCK VERTICAL SOLID BODY W/O PEGS	<u>SHEET No.</u> - 6 -	
	EC NO.: UCP2016-1946 DATE: 5/16/2016			
<u>DOCUMENT NUMBER:</u> SD-171813-0001		<u>CREATED / REVISED BY:</u> MKIPPER	<u>CHECKED BY:</u> JBELL	<u>APPROVED BY:</u> FSMITH-ROEMER