



Chipsmall Limited consists of a professional team with an average of over 10 year of expertise in the distribution of electronic components. Based in Hongkong, we have already established firm and mutual-benefit business relationships with customers from,Europe,America and south Asia,supplying obsolete and hard-to-find components to meet their specific needs.

With the principle of “Quality Parts,Customers Priority,Honest Operation,and Considerate Service”,our business mainly focus on the distribution of electronic components. Line cards we deal with include Microchip,ALPS,ROHM,Xilinx,Pulse,ON,Everlight and Freescale. Main products comprise IC,Modules,Potentiometer,IC Socket,Relay,Connector.Our parts cover such applications as commercial,industrial, and automotives areas.

We are looking forward to setting up business relationship with you and hope to provide you with the best service and solution. Let us make a better world for our industry!



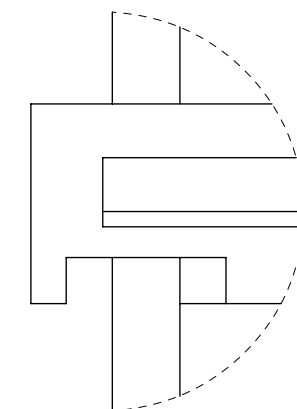
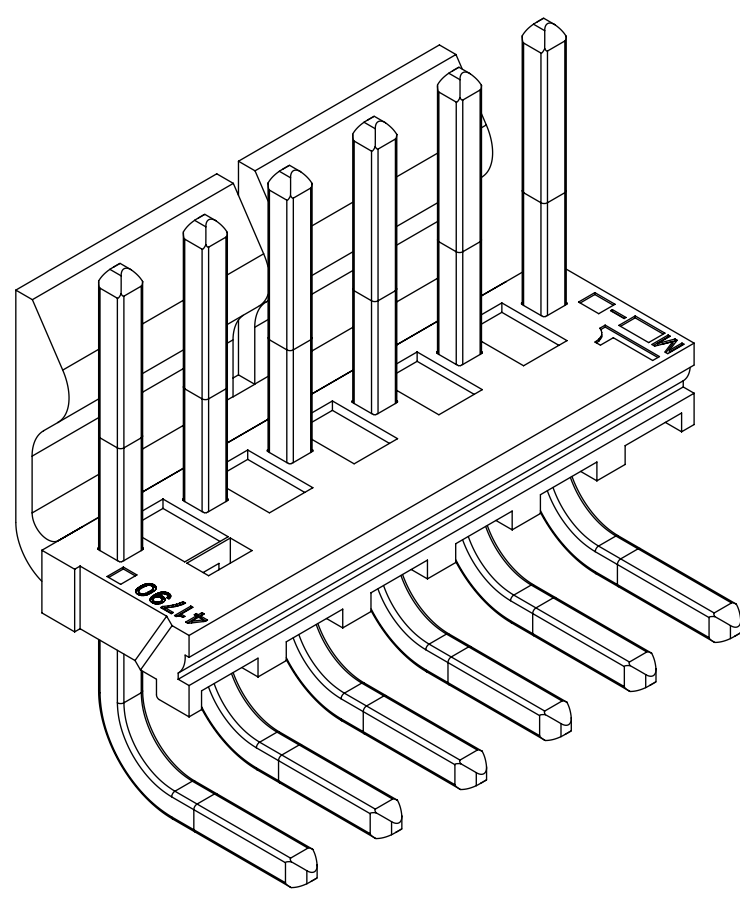
Contact us

Tel: +86-755-8981 8866 Fax: +86-755-8427 6832

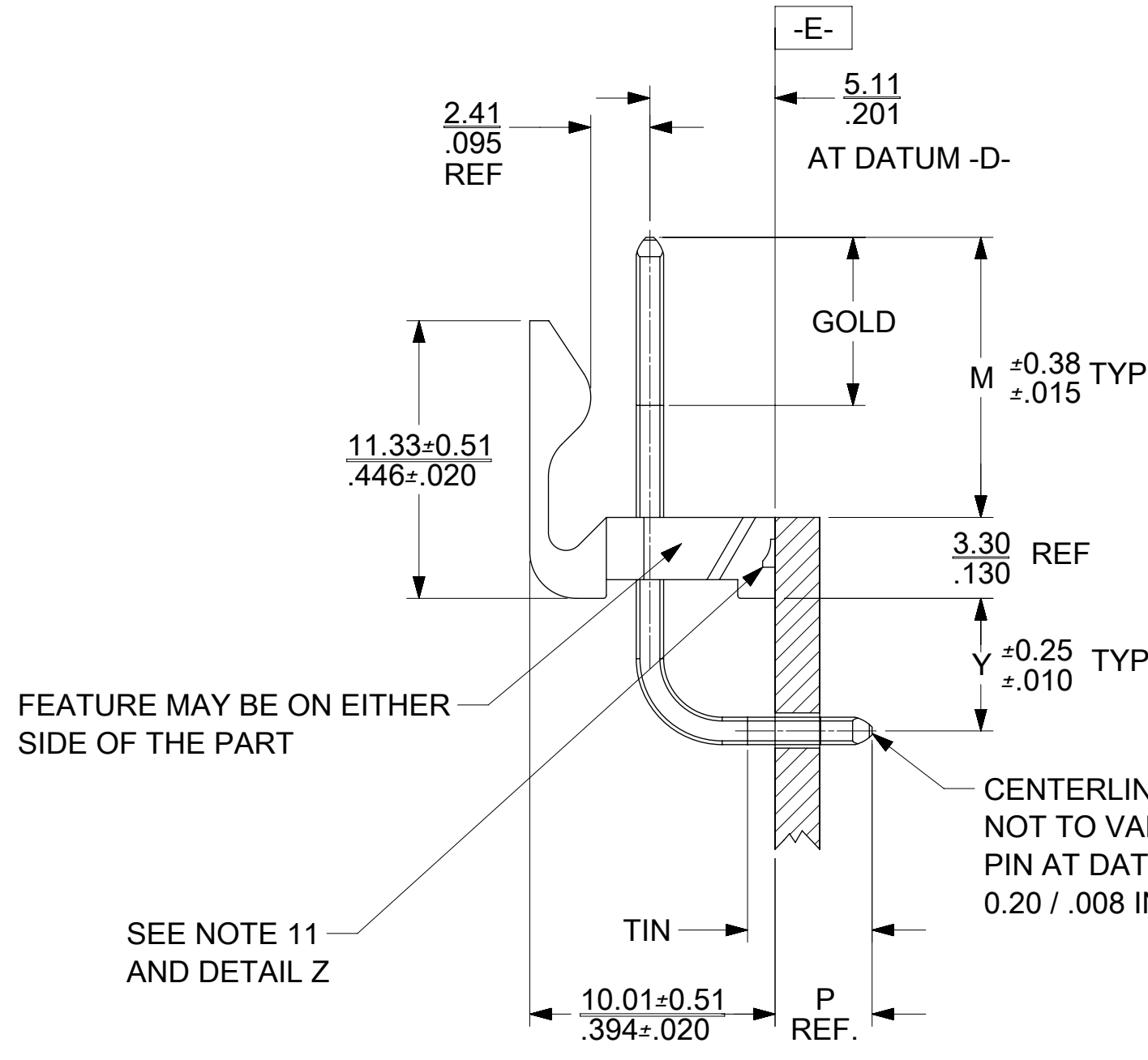
Email & Skype: info@chipsmall.com Web: www.chipsmall.com

Address: A1208, Overseas Decoration Building, #122 Zhenhua RD., Futian, Shenzhen, China





DETAIL Z
SCALE 8:1

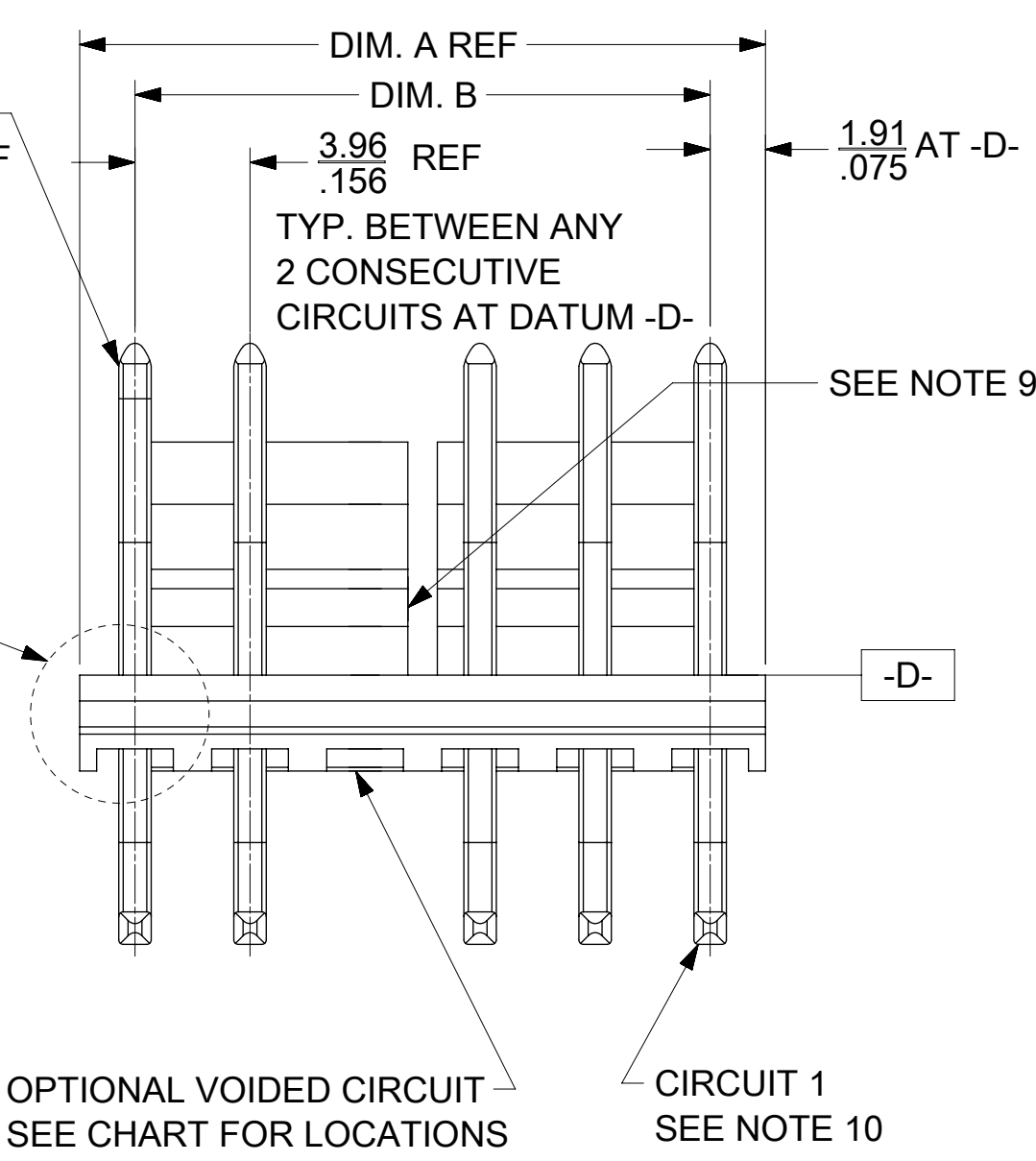


FEATURE MAY BE ON EITHER SIDE OF THE PART

SEE NOTE 11 AND DETAIL Z

CENTERLINE OF PIN AT TIP NOT TO VARY FROM CENTERLINE OF PIN AT DATUM -D- BY MORE THAN 0.20 / .008 IN ANY DIRECTION.

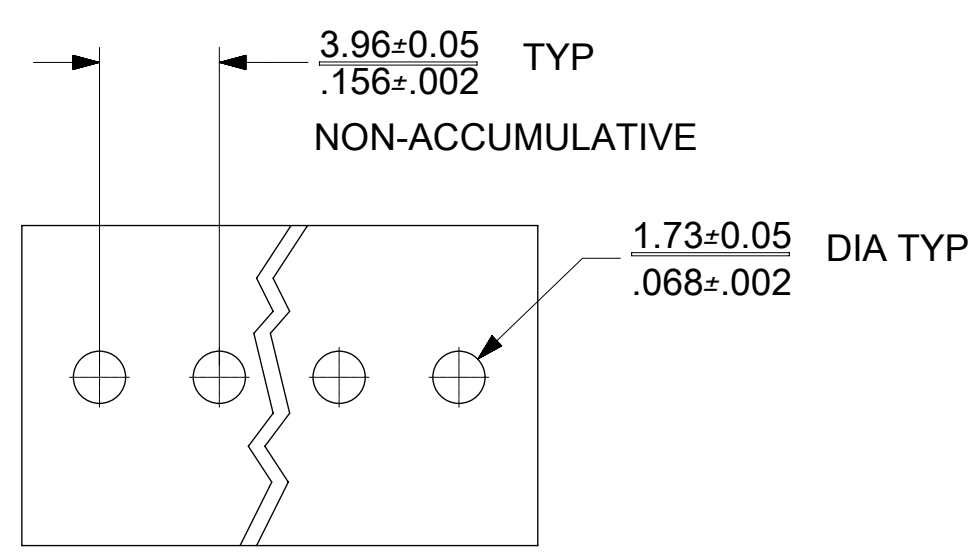
CENTERLINE OF PIN AT TIP NOT TO VARY FROM CENTERLINE OF PIN AT DATUM -E- BY MORE THAN 0.20 / .008 IN ANY DIRECTION.



OPTIONAL VOIDED CIRCUIT SEE CHART FOR LOCATIONS

CIRCUIT 1 SEE NOTE 10

CIRCUIT SIZE	DIM. A	DIM. B	SLOT LOCATION BETWEEN CIRCUITS
2	7.77 .306	3.96±0.05 .156±.002	NONE
3	11.73 .462	7.92±0.10 .312±.004	NONE
4	15.70 .618	11.89±0.15 .468±.006	NONE
5	19.66 .774	15.85±0.15 .624±.006	NONE
6	23.62 .930	19.81±0.18 .780±.007	3 & 4
7	27.58 1.086	23.77±0.18 .936±.007	4 & 5
8	31.55 1.242	27.74±0.20 1.092±.008	4 & 5
9	35.51 1.398	31.70±0.20 1.248±.008	5 & 6
10	39.47 1.554	35.66±0.23 1.404±.009	5 & 6
11	43.43 1.710	39.62±0.23 1.560±.009	6 & 7
12	47.40 1.866	43.59±0.25 1.716±.010	4 & 5 8 & 9



PCB LAYOUT: COMPONENT SIDE

- NOTES:
- MATERIAL: HOUSING: NYLON, UL94V-1, COLOR: BLACK
PINS: BRASS
 - FINISH: (197) = OVERALL REFLOWED MATTE TIN: 0.00152/.000060 MIN. OVER 0.00127/.000050 MIN. NICKEL OVERALL.
(208) = SELECT GOLD: 0.00038/.000015 MIN, SELECT MATTE TIN: 0.00254/.000100 MIN, BOTH OVER 0.00127/.000050 MIN NICKEL.
(228) = SELECT GOLD: 0.00076/.000030 MIN, SELECT MATTE TIN: 0.00254/.000100 MIN, BOTH OVER 0.00127/.000050 MIN NICKEL.
 - PRODUCT SPECIFICATION: PS-171813-0001, PS-171813-0002
 - PACKAGING INFORMATION: SEE CHART
 - SOLDERABILITY: PER SMES-152.
 - PIN PUSH-OUT FORCE: PRIOR TO SOLDERING, A 3 LB. MINIMUM FORCE IN EITHER DIRECTION
 - PARTS ARE STACKABLE END TO END ON 3.96/.156 CENTERS.
 - THIS PART CONFORMS TO CLASS B REQUIREMENTS OF COSMETIC SPECIFICATION PS-45499-002.
 - SLOTS ON BACKWALL ARE BETWEEN CIRCUITS. SEE CHART FOR LOCATION.
 - CIRCUIT 1 DESIGNATION IS USED TO DEFINE VOID LOCATION. CIRCUIT 1 MAY OR MAY NOT LINE UP WITH CIRCUIT 1 ON THE MATING HOUSING.
 - FEATURE MAY OR MAY NOT EXTEND ACROSS THE ENTIRE FACE OF THE PART. SEE DETAIL Z.
 - THE PARTS LISTED ON THIS DRAWING ARE CONSTRUCTED TO MEET THE REQUIREMENT FOR DIRECT SUPPORT OF UNINSULATED LIVE PARTS AS DESCRIBED IN UL508C.

THIS DRAWING CONTAINS INFORMATION THAT IS PROPRIETARY TO MOLEX ELECTRONIC TECHNOLOGIES, LLC AND SHOULD NOT BE USED WITHOUT WRITTEN PERMISSION

QUALITY SYMBOLS	ADD NOTE 12 EC NO: 113073 DRWN: BAPPELDORN CHKD: JBELL REV APPR: FSMITH	GENERAL TOLERANCES (UNLESS SPECIFIED)		DIMENSION UNITS	SCALE	
		MM	INCH	MM/IN	4:1	
		4 PLACES ±	±	DRWN BY	DATE	
		3 PLACES ±	± 0.01	MKIPPER	2012/09/14	
2 PLACES ±	± 0.25 ± 0.015	CHK'D BY	DATE			
1 PLACES ±	± 0.38 ±	SSOUSEK	2012/09/14			
0 PLACES ±	±	APPR BY	DATE			
ANGULAR TOL = 0.5		FSMITH	2013/06/11			
DRAFT WHERE APPLICABLE MUST REMAIN WITHIN DIMENSIONS		DRAWING SIZE	THIRD ANGLE PROJECTION			
		C				

SERIES	MATERIAL NUMBER	CUSTOMER
171814	SEE CHART	GENERAL MARKET
DOCUMENT NUMBER	DOC TYPE	DOC PART
SD-171814-0001	PSD	000
SHEET NUMBER		1 OF *

OPTIONS	Group	171814-0002/0012	Group	171814-1002/1012	Group	171814-2002/2012
	Plating:	197 – TIN	Plating:	208 – 15 GOLD	Plating:	228 – 30 GOLD
	Mating M	11.33 / .446	Mating M	11.33 / .446	Mating M	11.33 / .446
	Gold Loc G	N/A	Gold Loc G	6.85 / .270	Gold Loc G	6.85 / .270
	Height Y	5.41 / .213	Height Y	5.41 / .213	Height Y	5.41 / .213
	PC Tail P	2.54/ .100	PC Tail P	2.54/ .100	PC Tail P	2.54/ .100
	Tin Loc T	OVERALL	Tin Loc T	5.08 / .200	Tin Loc T	5.08 / .200
	Voided Ckts	NONE	Voided Ckts	NONE	Voided Ckts	NONE
	Pack Per	PK-41792-002 BULK	Pack Per	PK-41792-002 BULK	Pack Per	PK-41792-002 BULK
Ckts	Material No		Material No		Material No	
2	171814-0002		171814-1002		171814-2002	
3	171814-0003		171814-1003		171814-2003	
4	171814-0004		171814-1004		171814-2004	
5	171814-0005		171814-1005		171814-2005	
6	171814-0006		171814-1006		171814-2006	
7	171814-0007		171814-1007		171814-2007	
8	171814-0008		171814-1008		171814-2008	
9	171814-0009		171814-1009		171814-2009	
10	171814-0010		171814-1010		171814-2010	
11	171814-0011		171814-1011		171814-2011	
12	171814-0012		171814-1012		171814-2012	

REV:	<u>ECR/ECN INFORMATION:</u>	<u>TITLE:</u>	<u>SHEET No.</u>
A4	EC No.: UCP2016-0009	KK RPC 156 HEADER ASSEMBLY FRICTION LOCK RIGHT ANGLE W/O PEGS	- 2 -
	DATE: 8/27/2015		
<u>DOCUMENT NUMBER:</u>	<u>CREATED / REVISED BY:</u>	<u>CHECKED BY:</u>	<u>APPROVED BY:</u>
SD-171814-0001	MKIPPER	JBELL	FSMITH-ROEMER

OPTIONS	Group	171814-0102/0112	Group	171814-1104	Group	
	Plating:	197 – TIN	Plating:	208 – 15 GOLD	Plating:	
	Mating M	11.43 / .450	Mating M	11.43 / .450	Mating M	
	Gold Loc G	N/A	Gold Loc G	6.85 / .270	Gold Loc G	
	Height Y	5.41 / .213	Height Y	5.41 / .213	Height Y	
	PC Tail P	3.96/ .156	PC Tail P	3.96/ .156	PC Tail P	
	Tin Loc T	OVERALL	Tin Loc T	5.08 / .200	Tin Loc T	
	Voided Ckts	NONE	Voided Ckts	NONE	Voided Ckts	
	Pack Per	PK-41792-002 BULK	Pack Per	PK-41792-002 BULK	Pack Per	
Ckts	Material No		Material No		Material No	
2	171814-0102					
3	171814-0103					
4	171814-0104		171814-1104			
5	171814-0105					
6	171814-0106					
7	171814-0107					
8	171814-0108					
9	171814-0109					
10	171814-0110					
11	171814-0111					
12	171814-0112					

REV: A4	ECR/ECN INFORMATION: EC No.: UCP2016-0009 DATE: 8/27/2015	TITLE: KK RPC 156 HEADER ASSEMBLY FRICTION LOCK RIGHT ANGLE W/O PEGS	SHEET No. - 3 -
DOCUMENT NUMBER: SD-171814-0001	CREATED / REVISED BY: MKIPPER	CHECKED BY: JBELL	APPROVED BY: FSMITH-ROEMER

OPTIONS	Group	171814-3002/3012	Group	171814-4002/4012	Group	
	Plating:	197 – TIN	Plating:	208 – 15 GOLD	Plating:	
	Mating M	11.33 / .446	Mating M	11.33 / .446	Mating M	
	Gold Loc G	N/A	Gold Loc G	6.85 / .270	Gold Loc G	
	Height Y	5.41 / .213	Height Y	5.41 / .213	Height Y	
	PC Tail P	2.54/ .100	PC Tail P	2.54/ .100	PC Tail P	
	Tin Loc T	OVERALL	Tin Loc T	5.08 / .200	Tin Loc T	
	Voided Ckts	NONE	Voided Ckts	NONE	Voided Ckts	
	Pack Per	PK-171814-0001 TAPE AND REEL	Pack Per	PK-171814-0001 TAPE AND REEL	Pack Per	
Ckts	Material No		Material No		Material No	
2	171814-3002		171814-4002			
3	171814-3003		171814-4003			
4	171814-3004		171814-4004			
5	171814-3005		171814-4005			
6	171814-3006		171814-4006			
7	171814-3007		171814-4007			
8	171814-3008		171814-4008			
9	171814-3009		171814-4009			
10	171814-3010		171814-4010			
11	171814-3011		171814-4011			
12	171814-3012		171814-4012			

REV: A4	ECR/ECN INFORMATION: EC No.: UCP2016-0009 DATE: 8/27/2015	TITLE: KK RPC 156 HEADER ASSEMBLY FRICTION LOCK RIGHT ANGLE W/O PEGS	SHEET No. - 4 -
DOCUMENT NUMBER: SD-171814-0001	CREATED / REVISED BY: MKIPPER	CHECKED BY: JBELL	APPROVED BY: FSMITH-ROEMER

OPTIONS	Group	171814-9999	Group		Group	
	Plating:	197 – TIN	Plating:		Plating:	
	Mating M	11.43 / .450	Mating M		Mating M	
	Gold Loc G	N/A	Gold Loc G		Gold Loc G	
	Height Y	5.41 / .213	Height Y		Height Y	
	PC Tail P	3.96/ .156	PC Tail P		PC Tail P	
	Tin Loc T	OVERALL	Tin Loc T		Tin Loc T	
	Voided Ckts	3, 5, 7	Voided Ckts		Voided Ckts	
	Pack Per	PK-41792-002 BULK	Pack Per		Pack Per	
Ckts	Material No		Material No		Material No	
2						
3						
4						
5						
6						
7	171814-9999					
8						
9						
10						
11						
12						

REV: A4	ECR/ECN INFORMATION: EC No.: UCP2016-0009 DATE: 8/27/2015	TITLE: KK RPC 156 HEADER ASSEMBLY FRICTION LOCK RIGHT ANGLE W/O PEGS	SHEET No. - 5 -
DOCUMENT NUMBER: SD-171814-0001		CREATED / REVISED BY: MKIPPER	CHECKED BY: JBELL
		APPROVED BY: FSMITH-ROEMER	