



Chipsmall Limited consists of a professional team with an average of over 10 year of expertise in the distribution of electronic components. Based in Hongkong, we have already established firm and mutual-benefit business relationships with customers from,Europe,America and south Asia,supplying obsolete and hard-to-find components to meet their specific needs.

With the principle of "Quality Parts,Customers Priority,Honest Operation,and Considerate Service",our business mainly focus on the distribution of electronic components. Line cards we deal with include Microchip,ALPS,ROHM,Xilinx,Pulse,ON,Everlight and Freescale. Main products comprise IC,Modules,Potentiometer,IC Socket,Relay,Connector.Our parts cover such applications as commercial,industrial, and automotives areas.

We are looking forward to setting up business relationship with you and hope to provide you with the best service and solution. Let us make a better world for our industry!



Contact us

Tel: +86-755-8981 8866 Fax: +86-755-8427 6832

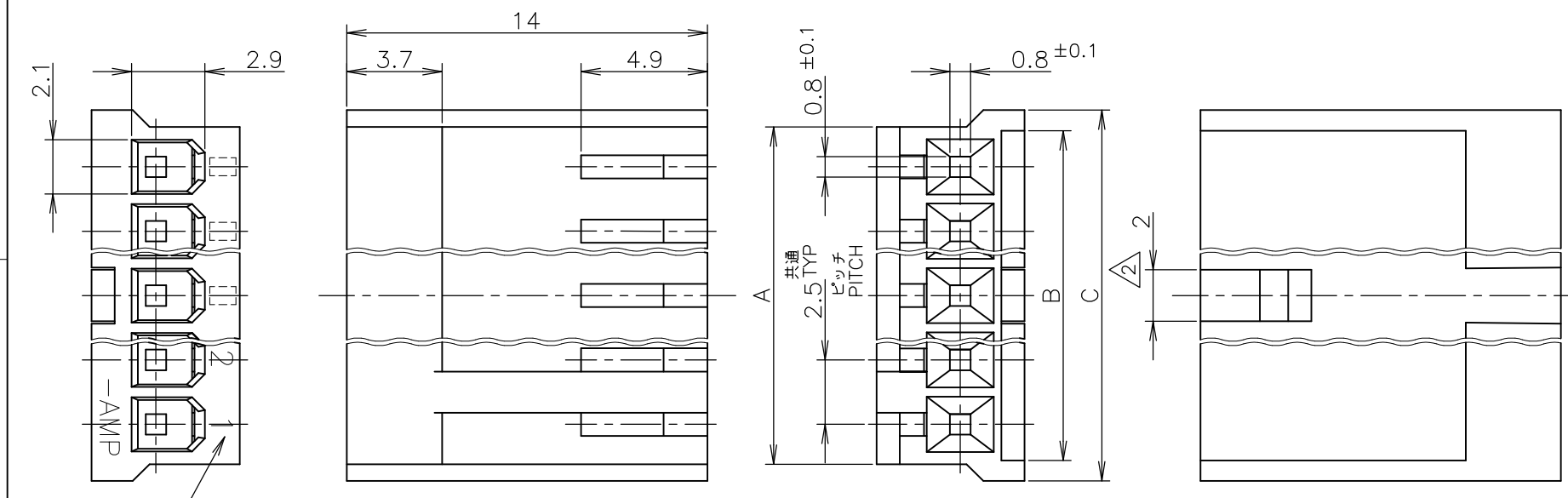
Email & Skype: info@chipsmall.com Web: www.chipsmall.com

Address: A1208, Overseas Decoration Building, #122 Zhenhua RD., Futian, Shenzhen, China

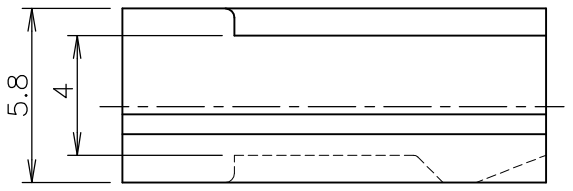


THIS DRAWING IS UNPUBLISHED. RELEASED FOR PUBLICATION
 © COPYRIGHT - By - ALL RIGHTS RESERVED.

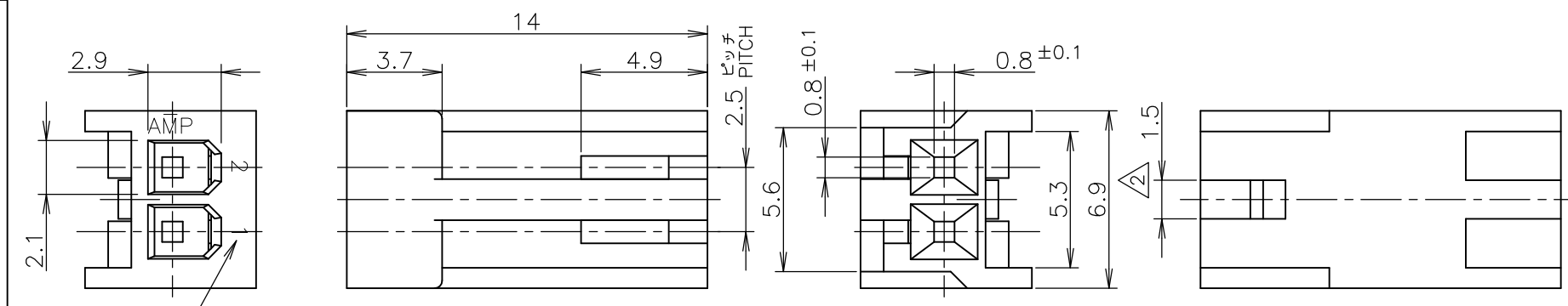
LOC	DIST	REVISIONS 変更					
J	/	P	LTR	DESCRIPTION	DATE	DWN	APVD
		L1		REVISED PER ECO-11-005030	11MAR11	RK	HMR



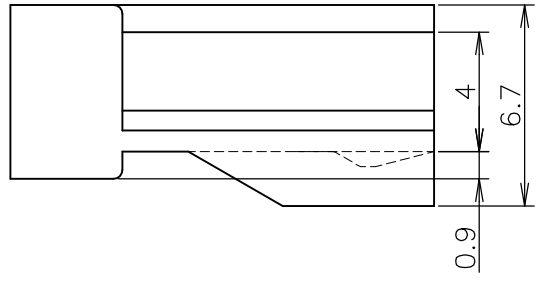
回路番号
CIRCUIT NO.



3~12極
POS



回路番号
CIRCUIT NO.



2極
POS

- 1 使用するコンタクトは 170262 又は 170263.
- ② ロッキング凸部位置は長手方向の中央。
- 1 CONTACTS, 170262 & 170263 ARE USED.
- ② LOCKING PROTRUSION IS PLACED ON THE CENTER OF HOUSING.

C	B	A	極数 (POS)	型番 (PART NUMBER)		
				赤色 (RED)	緑色 (GREEN)	
31.9	30.3	30.6	12	9-171822-2	7-171822-2	
26.9	25.3	25.6	10	9-▲-0	7-▲-0	
24.4	22.8	23.1	9	8-▲-9	6-▲-9	
21.9	20.3	20.6	8	8-▲-8	6-▲-8	
19.4	17.8	18.1	7	8-▲-7	6-▲-7	
16.9	15.3	15.6	6	8-▲-6	6-▲-6	
14.4	12.8	13.1	5	8-▲-5	6-▲-5	
11.9	10.3	10.6	4	8-▲-4	6-▲-4	
9.4	7.8	8.1	3	8-▲-3	6-▲-3	
-図示- SHOWN			2	8-171822-2	6-171822-2	
C	B	A	極数 (POS)	型番 (PART NUMBER)		
31.9	30.3	30.6	12	5-171822-2	3-171822-2	1-171822-2
26.9	25.3	25.6	10	5-▲-0	3-▲-0	1-▲-0
24.4	22.8	23.1	9	4-▲-9	2-▲-9	
21.9	20.3	20.6	8	4-▲-8	2-▲-8	
19.4	17.8	18.1	7	4-▲-7	2-▲-7	
16.9	15.3	15.6	6	4-▲-6	2-▲-6	
14.4	12.8	13.1	5	4-▲-5	2-▲-5	
11.9	10.3	10.6	4	4-▲-4	2-▲-4	
9.4	7.8	8.1	3	4-▲-3	2-▲-3	
-図示- SHOWN			2	4-171822-2	2-171822-2	171822-2
C	B	A	極数 (POS)	青色 (BLUE)	黒色 (BLACK)	自然色 (NATURAL)
31.9	30.3	30.6	12	5-171822-2	3-171822-2	1-171822-2
26.9	25.3	25.6	10	5-▲-0	3-▲-0	1-▲-0
24.4	22.8	23.1	9	4-▲-9	2-▲-9	
21.9	20.3	20.6	8	4-▲-8	2-▲-8	
19.4	17.8	18.1	7	4-▲-7	2-▲-7	
16.9	15.3	15.6	6	4-▲-6	2-▲-6	
14.4	12.8	13.1	5	4-▲-5	2-▲-5	
11.9	10.3	10.6	4	4-▲-4	2-▲-4	
9.4	7.8	8.1	3	4-▲-3	2-▲-3	
-図示- SHOWN			2	4-171822-2	2-171822-2	171822-2

THIS DRAWING IS A CONTROLLED DOCUMENT.

DWN H.HOSHINO 12JUN97	NAME 名称 HOUSING AMP EI SERIES CONNECTOR
CHK J.TANIGAWA 12JUN97	
APVD S.KUBOUCHI 03OCT97	SIZE A3
PRODUCT SPEC 製品規格 108-5118	CAGE CODE 00779
APPLICATION SPEC 取付適用規格	DRAWING NO 番号 G-171822
WEIGHT	RESTRICTED TO 番号
MATERIAL 材料 66 NYLON (UL94-0)	SCALE 尺度 4:1
DIMENSIONS: 単位: 耗 mm	SHEET 1 OF 1
TOLERANCES UNLESS OTHERWISE SPECIFIED: 一般公差	REV L1
0 PLC ±-	
1 PLC ±-	
2 PLC ±-	
3 PLC ±-	
4 PLC ±-	
ANGLES ±-	
FINISH 仕上	

GENERAL TOLERANCE
一般公差

10 ≥ : ±0.2
30 ≥ > 10: ±0.25
100 ≥ > 30: ±0.3
ANGLES: ±3°