



Chipsmall Limited consists of a professional team with an average of over 10 year of expertise in the distribution of electronic components. Based in Hongkong, we have already established firm and mutual-benefit business relationships with customers from,Europe,America and south Asia,supplying obsolete and hard-to-find components to meet their specific needs.

With the principle of “Quality Parts,Customers Priority,Honest Operation,and Considerate Service”,our business mainly focus on the distribution of electronic components. Line cards we deal with include Microchip,ALPS,ROHM,Xilinx,Pulse,ON,Everlight and Freescale. Main products comprise IC,Modules,Potentiometer,IC Socket,Relay,Connector.Our parts cover such applications as commercial,industrial, and automotives areas.

We are looking forward to setting up business relationship with you and hope to provide you with the best service and solution. Let us make a better world for our industry!



Contact us

Tel: +86-755-8981 8866 Fax: +86-755-8427 6832

Email & Skype: info@chipsmall.com Web: www.chipsmall.com

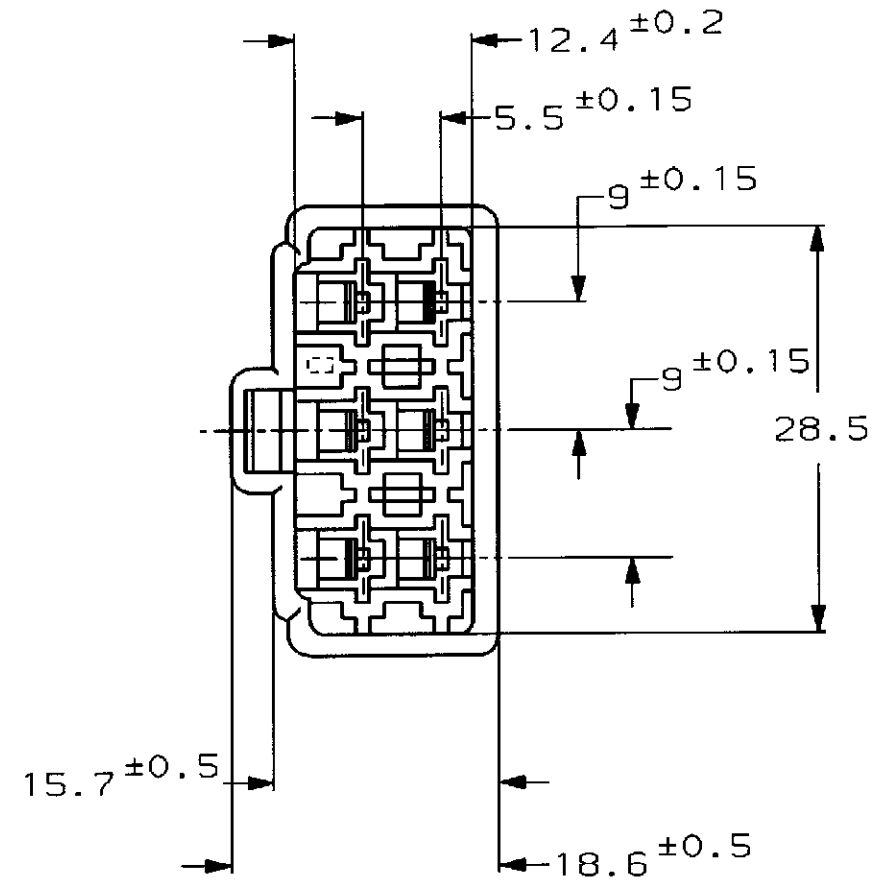
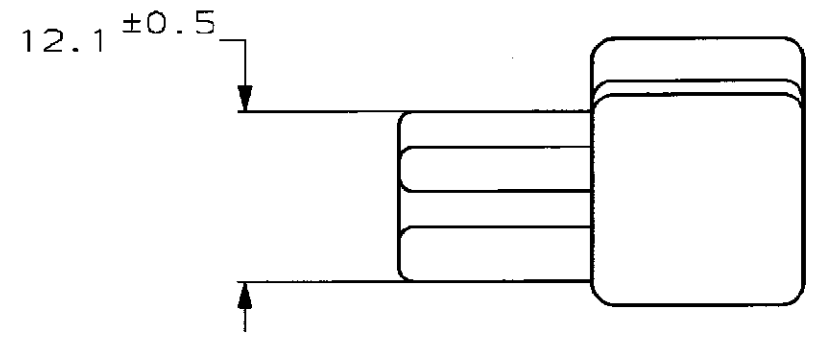
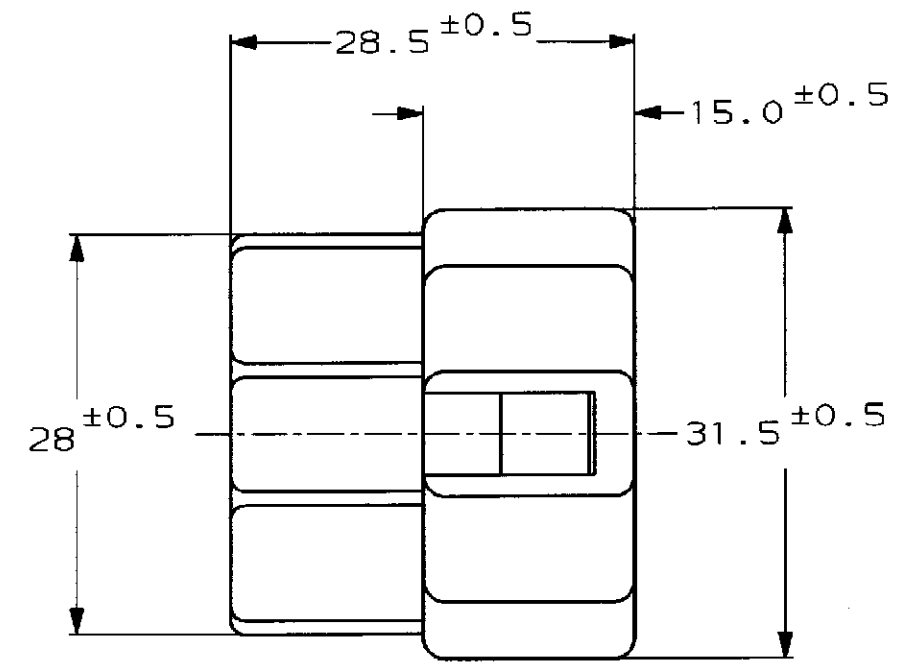
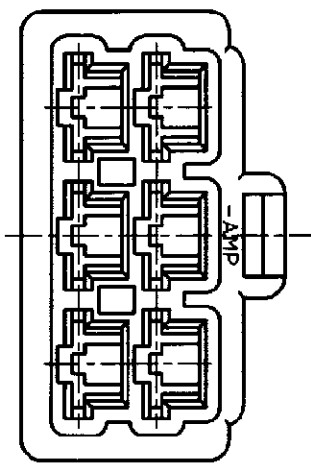
Address: A1208, Overseas Decoration Building, #122 Zhenhua RD., Futian, Shenzhen, China



NUMBER C-171897



METRIC



注.
 1 嵌合する相手ハウジングは型番171898
 2 使用端子は型番170340,170341,170349
 NOTE.
 1 THE MATING PLUG HOUSING; P/N 171898
 2 APPLIED CONTACT: P/N 170340, 170341, 170349
 3 OBSOLETE PARTS: OBSOLETE CIS STREAMLINING PER D.RENAUD/D.SINISI

3	OBSOLETE	淡灰 (LIGHT GRAY)	6-171897-6
		赤 (RED)	171897-9
		橙 (ORANGE)	-8
		黄 (YELLOW)	-7
3	OBSOLETE	灰 (GRAY)	-6
		青 (BLUE)	-5
3	OBSOLETE	緑 (GREEN)	-4
		茶 (BROWN)	-3
		黒 (BLACK)	-2
		自然色 (NATURAL)	171897-1
		色 (COLOR)	型番 (P/N)

PRINT DIST 単位: ㎜ DIMENSIONS IN MM. DO NOT SCALE PRINT

Copyright ©1979 年 AMP (Japan) LTD. ALL RIGHTS RESERVED.		Copyright ©1979 AMP (Japan) LTD. ALL RIGHTS RESERVED.		AMP 株式会社 Tokyo, Japan	
ZWR mm² (AWG)		ZIR mm²		名称 (NAME) 250 シリーズ ハウジングランスコネクタ 6極 キャップ ハウジング	
材料 (MATERIAL) 6/6 ナイロン (6/6 NYLON)		仕上 (FINISH) 色: 表参照 (COLOR: SEE TABLE)		250 SERIES HOUSING LANCE CONNECTOR 6POS CAP HSG.	
E1 REVISED PER ECO-10-003194	KK HMR FEB10	DR. K. yuasa 9/10'93	DE. K. yuasa 9/10'93	一般公差 (GENERAL TOLERANCE)	LOC 番号 (No.)
E REVISED FJ00-0601-98	AY AB 9/10'93	CHK. D. Tomita 9/10'93	APP. D. Tomita 9/10'93	10以下: ±0.2 10を超え30以下: ±0.25 30を超え100以下: ±0.3 角 度: ±3°	B J C-171897
D REDROWN W/CHANGE FJ00-0269-93	KY AT 9/10'93			尺度 (SCALE) 2/1	REV. E1 SHEET 1 OF 1
LTR 変更 (REVISION RECORD)	DR CHK DATE				

(CUSTOMER DRAWING) 参考 面

AMP-J010-2C REV. 3/83 9188