



Chipsmall Limited consists of a professional team with an average of over 10 year of expertise in the distribution of electronic components. Based in Hongkong, we have already established firm and mutual-benefit business relationships with customers from,Europe,America and south Asia,supplying obsolete and hard-to-find components to meet their specific needs.

With the principle of “Quality Parts,Customers Priority,Honest Operation,and Considerate Service”,our business mainly focus on the distribution of electronic components. Line cards we deal with include Microchip,ALPS,ROHM,Xilinx,Pulse,ON,Everlight and Freescale. Main products comprise IC,Modules,Potentiometer,IC Socket,Relay,Connector.Our parts cover such applications as commercial,industrial, and automotives areas.

We are looking forward to setting up business relationship with you and hope to provide you with the best service and solution. Let us make a better world for our industry!



## Contact us

Tel: +86-755-8981 8866 Fax: +86-755-8427 6832

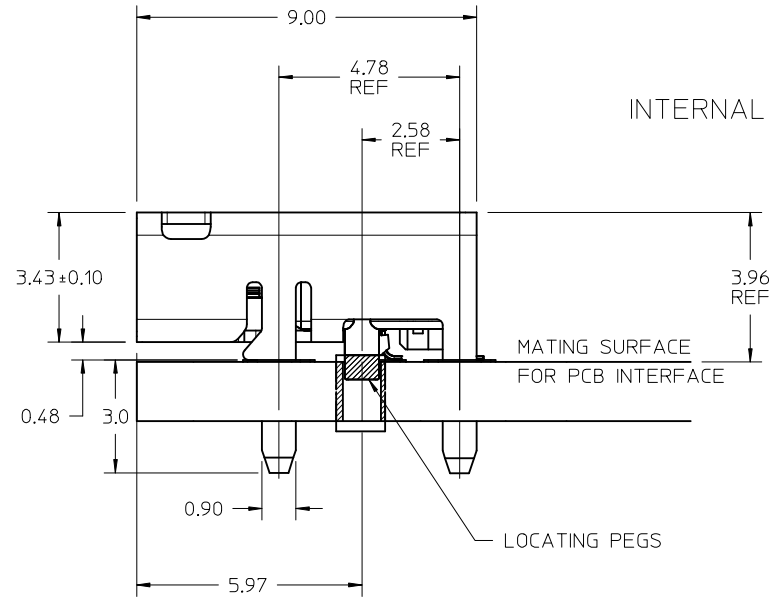
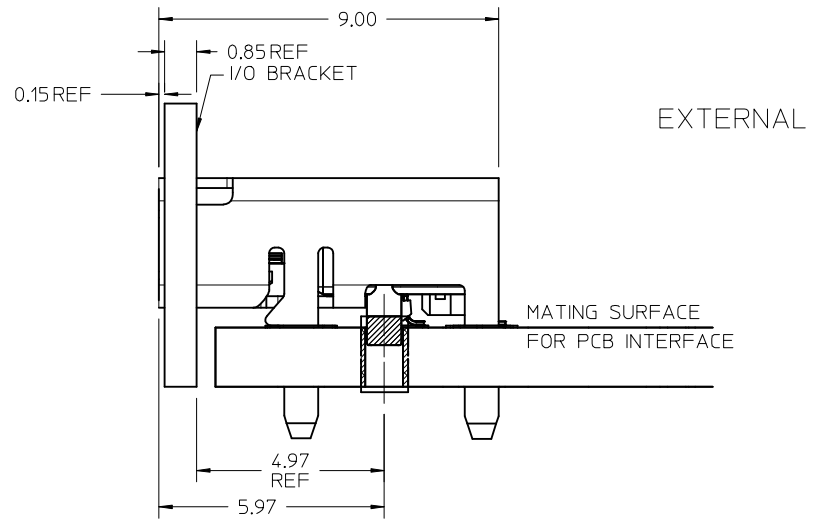
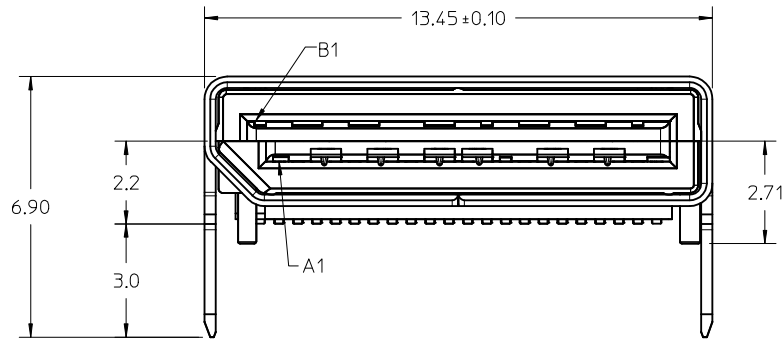
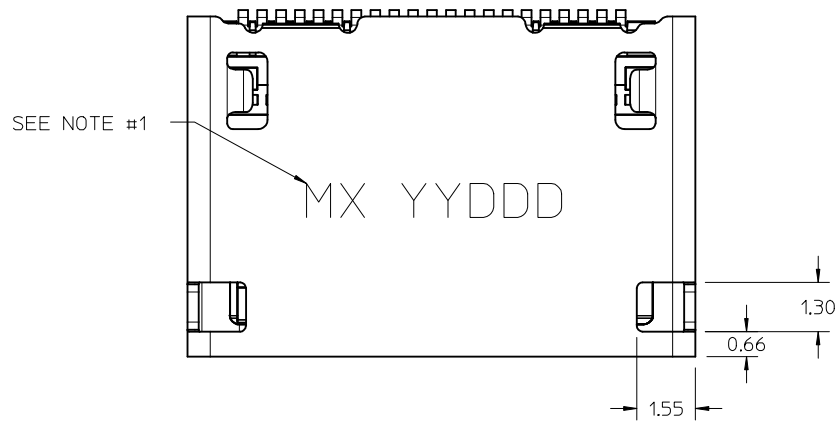
Email & Skype: info@chipsmall.com Web: www.chipsmall.com

Address: A1208, Overseas Decoration Building, #122 Zhenhua RD., Futian, Shenzhen, China





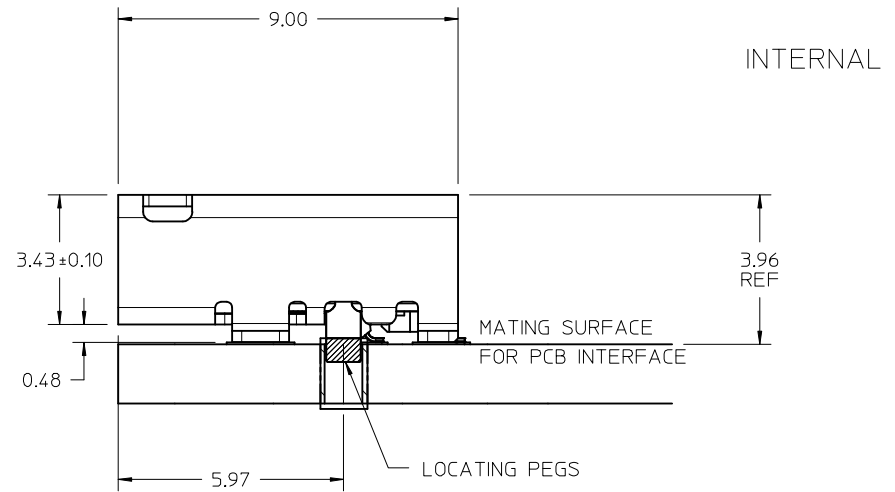
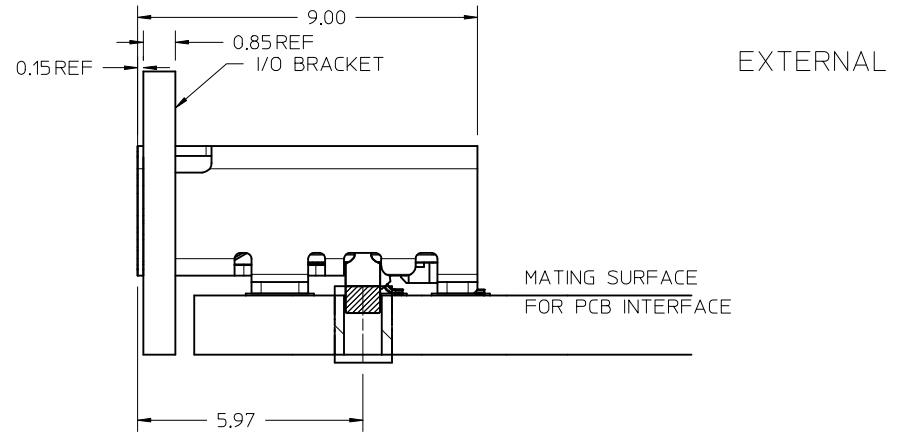
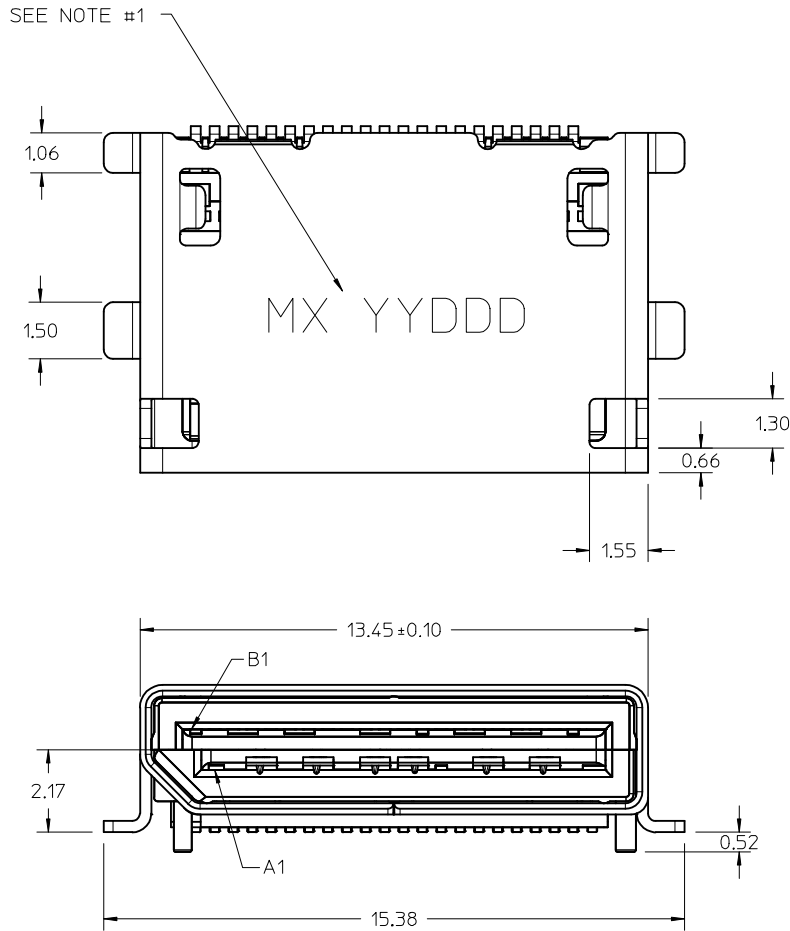
# 42 CIRCUIT TH ASSEMBLY



- NOTES:
1. MANUFACTURED DATE CODE (JULIAN CALENDAR)
  2. SOLDER TAIL COPLANARITY 0.10 MAX

SEE SHEET 1 EC NO: UCP2017-1264 DRWNS:VANG01 2016/12/06 CHKD: APPR:TMCCLELL 2017/04/24	QUALITY SYMBOLS ▽=0 ▽=0 ▽=0	GENERAL TOLERANCES (UNLESS SPECIFIED)		DIMENSION STYLE MM ONLY	SCALE 10:1	DESIGN UNITS METRIC	THIRD ANGLE PROJECTION	
		4 PLACES ± --- ± ---	3 PLACES ± --- ± ---	2 PLACES ± 0.13 ± ---	1 PLACE ± 0.25 ± ---	0 PLACE ± --- ± ---	ANGULAR ±1/2°	DRAWN BY MJANTELEZIO 2015/10/21
G	DESCRIPTION	DRAFT WHERE APPLICABLE MUST REMAIN WITHIN DIMENSIONS		APPROVED BY MBANAKIS 2015/11/09	DATE	DOCUMENT NO. SD-171982-1000		
		SIZE C		THIS DRAWING CONTAINS INFORMATION THAT IS PROPRIETARY TO MOLEX INCORPORATED AND SHOULD NOT BE USED WITHOUT WRITTEN PERMISSION		SHEET NO. 2 OF 6		

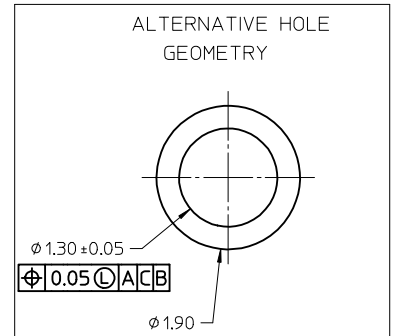
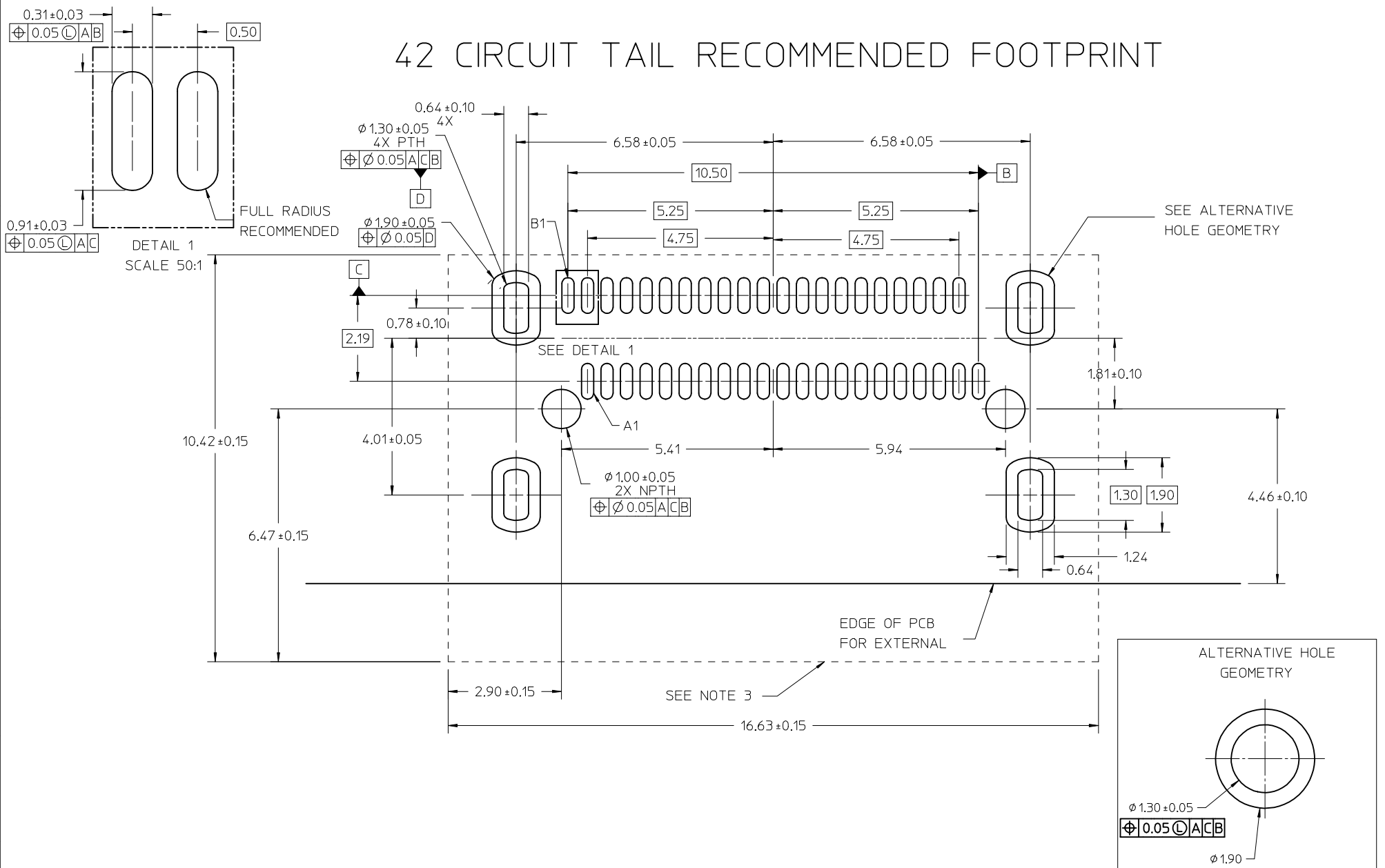
# 42 CIRCUIT SMT ASSEMBLY



- NOTES:  
 1. MANUFACTURED DATE CODE (JULIAN CALENDAR)  
 2. SOLDER TAIL COPLANARITY 0.10 MAX

SEE SHEET 1 EC NO: UCP2017-1264 DRWNS:VANG01 2016/12/06 CHKD: APPR:TMCCLELL 2017/04/24	QUALITY SYMBOLS	GENERAL TOLERANCES (UNLESS SPECIFIED)	DIMENSION STYLE	SCALE	DESIGN UNITS	THIRD ANGLE PROJECTION
	▽=0	mm INCH	MM ONLY	10:1	METRIC	
	▽=0	4 PLACES ± --- ± ---	DRAWN BY DATE	TITLE		
	▽=0	3 PLACES ± --- ± ---	MJANTELEZIO 2015/10/21	NANO-PITCH I/O RIGHT ANGLE PRE R1.0 - 16 GT/S		
	2 PLACES ± 0.13 ± ---	CHECKED BY DATE	DOCUMENT NO.			SHEET NO.
	1 PLACE ± 0.25 ± ---	APPROVED BY DATE	SD-171982-1000			3 OF 6
	0 PLACE ± --- ± ---	MBANAKIS 2015/11/09	SEE SHEET 1			
	ANGULAR ±1/2°	MATERIAL NO.	THIS DRAWING CONTAINS INFORMATION THAT IS PROPRIETARY TO MOLEX INCORPORATED AND SHOULD NOT BE USED WITHOUT WRITTEN PERMISSION			
	DRAFT WHERE APPLICABLE MUST REMAIN WITHIN DIMENSIONS	SIZE				

# 42 CIRCUIT TAIL RECOMMENDED FOOTPRINT

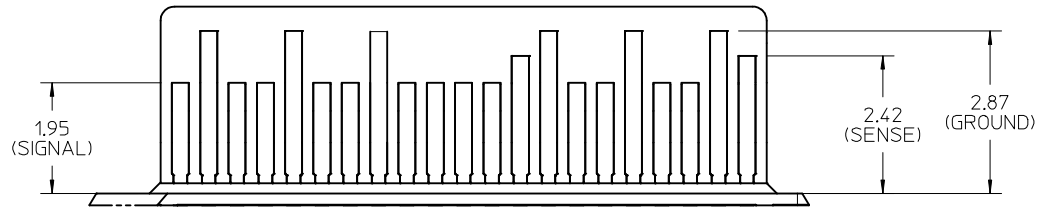


- NOTES:
1. MINIMUM RECOMMENDED SPACING BETWEEN ADJACENT CONNECTOR IS 19.05mm
  2. MINIMUM RECOMMENDED PCB THICKNESS: 1.57mm
  3. CONNECTOR KEEP OUT AREA
  4. DATUM -A- ESTABLISHED FROM TOP SURFACE OF PCB

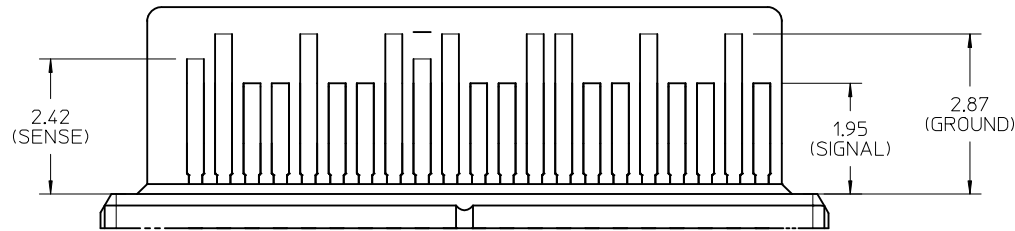
SEE SHEET 1 EC NO: UCP2017-1264 DRWNSYANG01 2016/12/06 CHKD: TMC/LELL APPR: TMC/LELL 2017/04/24	QUALITY SYMBOLS	GENERAL TOLERANCES (UNLESS SPECIFIED)	DIMENSION STYLE	SCALE	DESIGN UNITS	THIRD ANGLE PROJECTION
	▽=0	mm INCH	MM ONLY	15:1	METRIC	☉
	▽=0	4 PLACES ± --- ± ---	DRAWN BY DATE	TITLE		
	▽=0	3 PLACES ± --- ± ---	MJANTELEZIO 2015/10/21	NANO-PITCH I/O RIGHT ANGLE PRE R1.0 - 16 GT/S		
	2 PLACES ± 0.13 ± ---	CHECKED BY DATE	DOCUMENT NO.			SHEET NO.
	1 PLACE ± 0.25 ± ---	APPROVED BY DATE	SD-171982-1000			4 OF 6
	0 PLACE ± --- ± ---	MBANAK IS 2015/11/09	SEE SHEET 1			
	ANGULAR ±1/2°	MATERIAL NO.	THIS DRAWING CONTAINS INFORMATION THAT IS PROPRIETARY TO MOLEX INCORPORATED AND SHOULD NOT BE USED WITHOUT WRITTEN PERMISSION			
	DRAFT WHERE APPLICABLE MUST REMAIN WITHIN DIMENSIONS	SIZE				



# INTERFACE PATTERN



42 CIRCUITS  
BOTTOM  
SCALE 15:1



42 CIRCUITS  
TOP  
SCALE 15:1

<b>SEE SHEET 1</b> EC NO: UCP2017-1264 2016/12/06 DRWNS:VANG01 CHKD: APPR:TMCCLELL 2017/04/24	QUALITY SYMBOLS	GENERAL TOLERANCES (UNLESS SPECIFIED)	DIMENSION STYLE	SCALE	DESIGN UNITS	THIRD ANGLE PROJECTION
	▽=0	mm INCH	MM ONLY	15:1	METRIC	
	▽=0	4 PLACES ± --- ± ---	DRAWN BY DATE	TITLE		
	▽=0	3 PLACES ± --- ± ---	MJANTELEZIO 2015/10/21	NANO-PITCH I/O RIGHT ANGLE PRE R1.0 - 16 GT/S		
	2 PLACES ±0.13 ± ---	CHECKED BY DATE	APPROVED BY DATE			<b>molex</b>
	1 PLACE ±0.25 ± ---	MBANAKIS 2015/11/09	MATERIAL NO. DOCUMENT NO.			
	0 PLACE ± --- ± ---	ANGULAR ±1/2°	SEE SHEET 1			SHEET NO.
		DRAFT WHERE APPLICABLE MUST REMAIN WITHIN DIMENSIONS	SD-171982-1000			6 OF 6
			THIS DRAWING CONTAINS INFORMATION THAT IS PROPRIETARY TO MOLEX INCORPORATED AND SHOULD NOT BE USED WITHOUT WRITTEN PERMISSION			