



Chipsmall Limited consists of a professional team with an average of over 10 year of expertise in the distribution of electronic components. Based in Hongkong, we have already established firm and mutual-benefit business relationships with customers from,Europe,America and south Asia,supplying obsolete and hard-to-find components to meet their specific needs.

With the principle of “Quality Parts,Customers Priority,Honest Operation,and Considerate Service”,our business mainly focus on the distribution of electronic components. Line cards we deal with include Microchip,ALPS,ROHM,Xilinx,Pulse,ON,Everlight and Freescale. Main products comprise IC,Modules,Potentiometer,IC Socket,Relay,Connector.Our parts cover such applications as commercial,industrial, and automotives areas.

We are looking forward to setting up business relationship with you and hope to provide you with the best service and solution. Let us make a better world for our industry!



Contact us

Tel: +86-755-8981 8866 Fax: +86-755-8427 6832

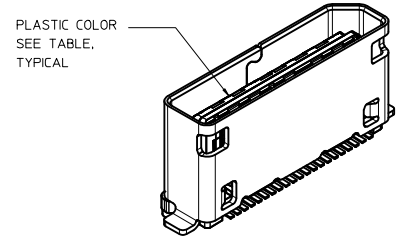
Email & Skype: info@chipsmall.com Web: www.chipsmall.com

Address: A1208, Overseas Decoration Building, #122 Zhenhua RD., Futian, Shenzhen, China

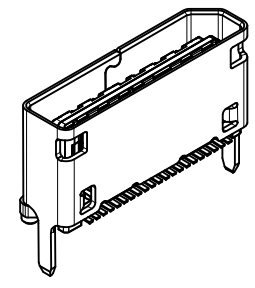


STATUS	MATERIAL NUMBER	PIN OUT OPTIONS	MATING LEVELS	CIRCUIT SIZE	SHELL ATTACH OPTION	DUST CAP COLOR	PLASTIC COLOR	DIM *T* OPTION 1
TOOLED	171983-0142	4X	3	42	SMT	BLACK	BLACK	-
NOT TOOLED	171983-0342	4X	3	42	SMT	BLACK	NATURAL	-
TOOLED	171983-2042	4X	3	42	TH	BLACK	BLACK	3.00
TOOLED	171983-2342	4X	3	42	TH	BLACK	NATURAL	3.00
NOT TOOLED	171983-2442	4X	3	42	TH	BLACK	BLACK	2.36
NOT TOOLED	171983-2542	4X	3	42	TH	BLACK	NATURAL	2.36
NOT TOOLED	171983-2642	4X	3	42	TH	BLACK	BLACK	1.57
NOT TOOLED	171983-2742	4X	3	42	TH	BLACK	NATURAL	1.57
TOOLED	171983-3042	4X	3	42	XD	BLACK	BLACK	3.00
NOT TOOLED	171983-3142	4X	3	42	XD	BLACK	NATURAL	3.00
NOT TOOLED	171983-3242	4X	3	42	XD	BLACK	BLACK	2.36
NOT TOOLED	171983-3342	4X	3	42	XD	BLACK	NATURAL	2.36
NOT TOOLED	171983-3442	4X	3	42	XD	BLACK	BLACK	1.57
NOT TOOLED	171983-3542	4X	3	42	XD	BLACK	NATURAL	1.57

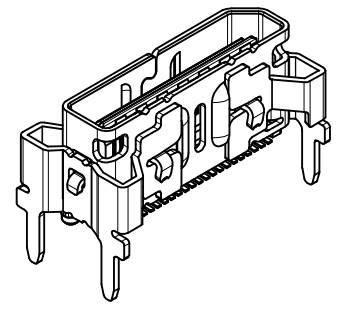
42 CIRCUIT SMT SHELL



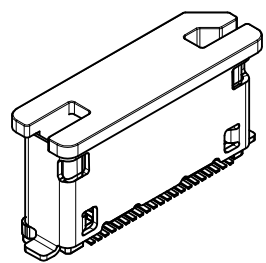
42 CIRCUIT THRU HOLE SHELL



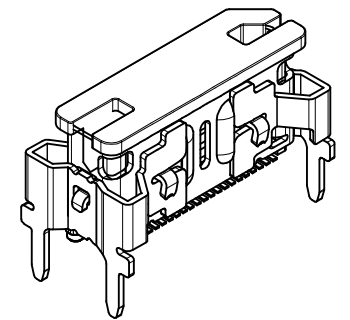
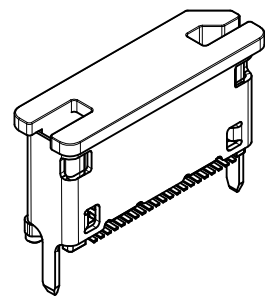
42 CIRCUIT XD SHELL



42 CIRCUIT SMT SHELL W/ CAP



42 CIRCUIT XD SHELL W/ CAP



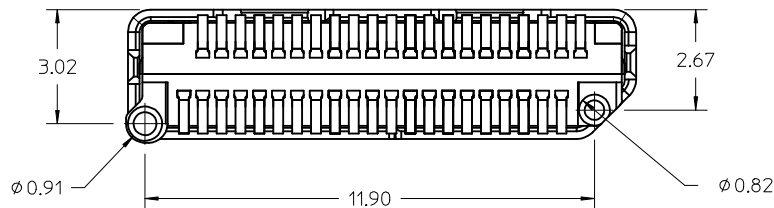
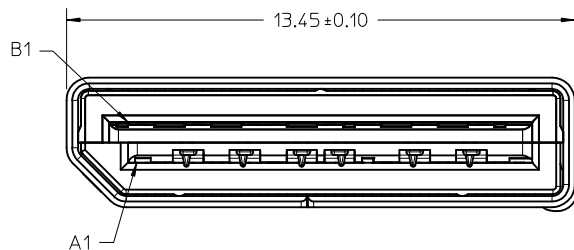
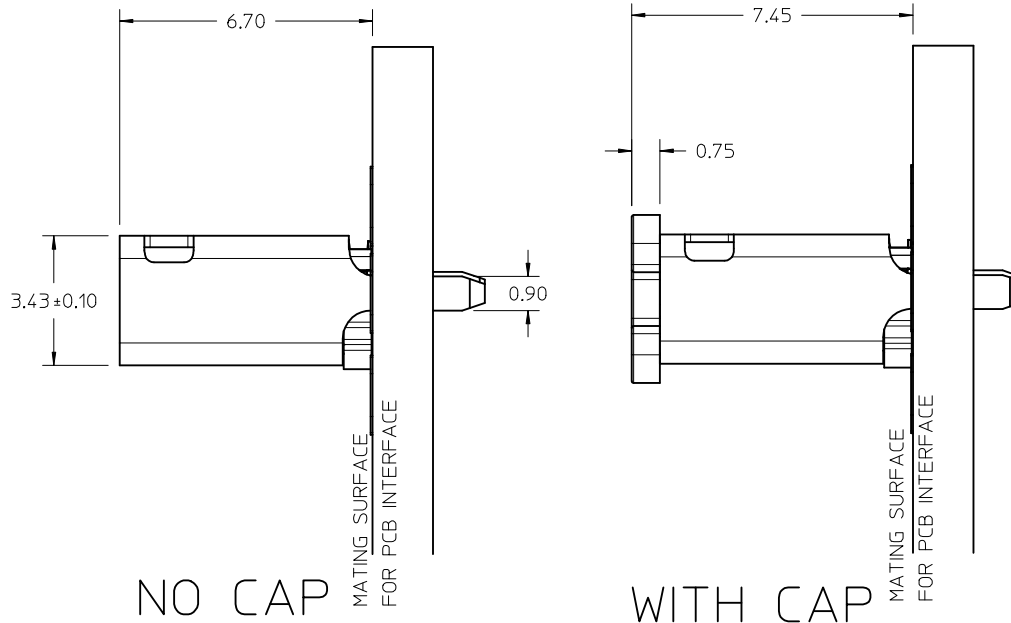
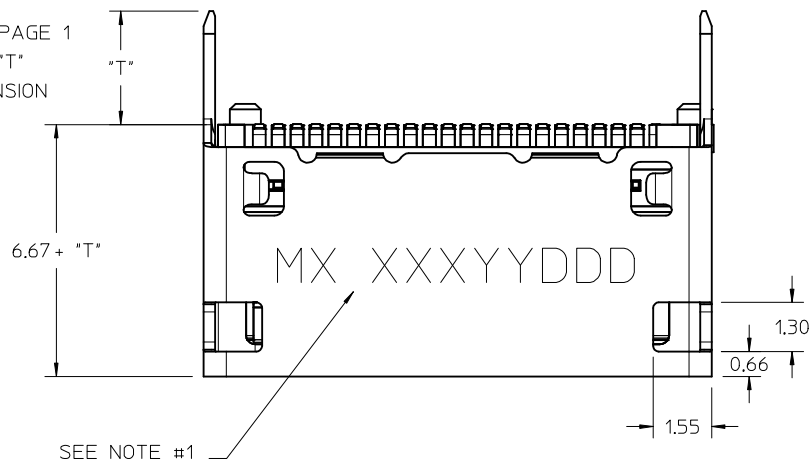
42 CIRCUIT THRU HOLE SHELL W/ CAP

- NOTES:
- MATERIALS:
HOUSING - GLASS FILLED THERMOPLASTIC, 94V-0
CONTACTS - HIGH PERFORMANCE COPPER ALLOY
SHIELD - STAINLESS STEEL
 - FINISH:
CONTACTS - 0.76µm MIN. GOLD MATING SIDE
2.54µm TIN ON SOLDER TAILS
2.0µm MIN. NICKEL UNDERPLATE OVERALL
SHIELD - MATTE TIN OVER 1.27µm MIN. NICKEL
 - PRODUCT SPECIFICATION: PS-171982-0001
 - PACKAGING SPECIFICATION: PK-171982-9000
 - MATES WITH: MOLEX CABLE SERIES 100436
PER INDUSTRY STANDARD PCIe OCuLink OR SFF-8612
 - APPLICATION SPECIFICATION: AS-173162-0001
 - COSMETIC SPECIFICATION: PS-173162-0001
 - ASSEMBLY PART NUMBER AND DATE CODE TO BE LOCATED APPROXIMATELY AS SHOWN, DATE CODE TO SHOW THE DATE AND YEAR OF ASSEMBLY (DDYY OR YDDD)

UPDATE TABLE EC NO: UCP2017-1264 DRAWN BY: DRWNSVANG01 CHKD BY: MJANTELEZ10 APPR: MJANTELEZ10 DATE: 2016/12/06 DATE: 2016/12/06 DATE: 2017/04/24	QUALITY SYMBOLS	GENERAL TOLERANCES (UNLESS SPECIFIED)	DIMENSION STYLE	SCALE	DESIGN UNITS	THIRD ANGLE PROJECTION
	▽=0	4 PLACES ±.05	MM ONLY	8:1	METRIC	NANO PITCH I/O VERTICAL PRE R1.0 - 16 GT/S molex
	▽=0	3 PLACES ±.13	INCH			
	▽=0	2 PLACES ±.25	ANGULAR ±1/2°	DRAWN BY: MJANTELEZ10	DATE: 2015/10/22	TITLE
▽=0	0 PLACE ±.25	DRAFT WHERE APPLICABLE MUST REMAIN WITHIN DIMENSIONS	CHECKED BY: DATE	APPROVED BY: MBANAKIS	DATE: 2015/11/09	
THIS DRAWING CONTAINS INFORMATION THAT IS PROPRIETARY TO MOLEX INCORPORATED AND SHOULD NOT BE USED WITHOUT WRITTEN PERMISSION						

42 CIRCUIT TH ASSEMBLY

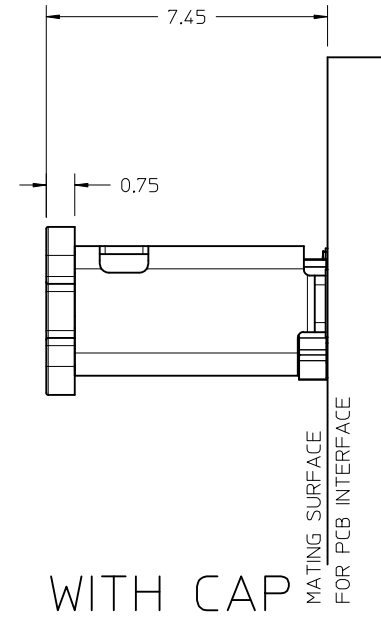
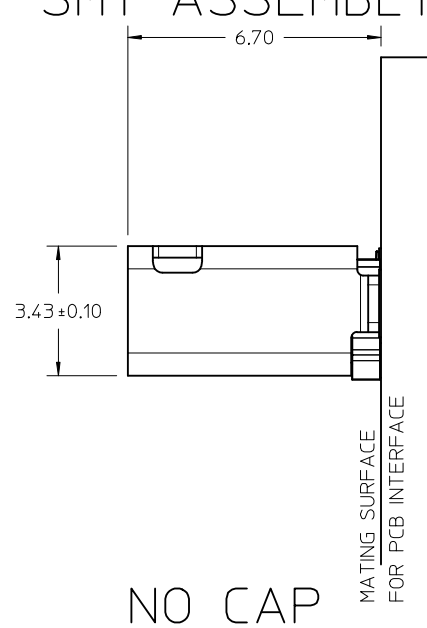
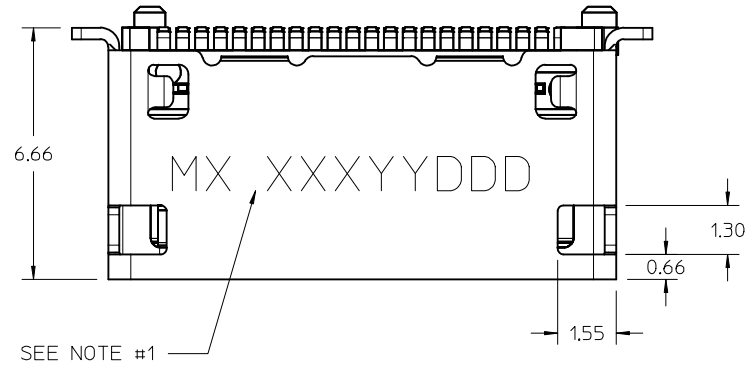
SEE PAGE 1
FOR "T"
DIMENSION



- NOTES:
1. PLANT CODE, MANUFACTURED DATE CODE (JULIAN CALENDAR) AND PART NUMBER
2. SOLDER TAIL COPLANARITY 0.10 MAX

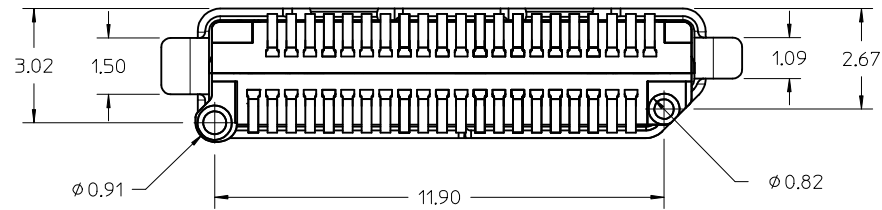
SEE SHEET 1 EC NO: UCP2017-1264 DRWNSVANG01 2016/12/06 CHKD:MJANTELEZIO 2016/12/06 APPR:TMCCLELL 2017/04/24	QUALITY SYMBOLS ▽=0 ▽=0 ▽=0	GENERAL TOLERANCES (UNLESS SPECIFIED)		DIMENSION STYLE MM ONLY	SCALE 10:1	DESIGN UNITS METRIC	THIRD ANGLE PROJECTION											
		4 PLACES ± --- ± ---	3 PLACES ± --- ± ---	2 PLACES ± 0.13 ± ---	1 PLACE ± 0.25 ± ---	0 PLACE ± --- ± ---	ANGULAR ±1/2°	DRAFT WHERE APPLICABLE MUST REMAIN WITHIN DIMENSIONS	DRAWN BY MJANTELEZIO 2015/10/22	DATE	CHECKED BY	DATE	APPROVED BY MBANAKIS 2015/11/09	DATE	TITLE NANO PITCH I/O VERTICAL PRE R1.0 - 16 GT/S	DOCUMENT NO. SD-171983-1000	SHEET NO. 2 OF 8	
SEE SHEET 1																		

42 CIRCUIT SMT ASSEMBLY



NO CAP

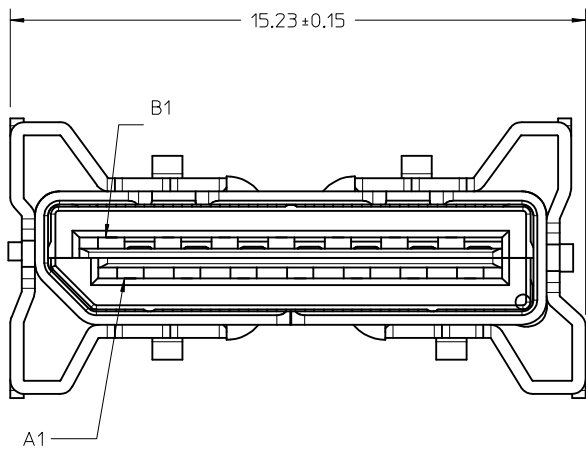
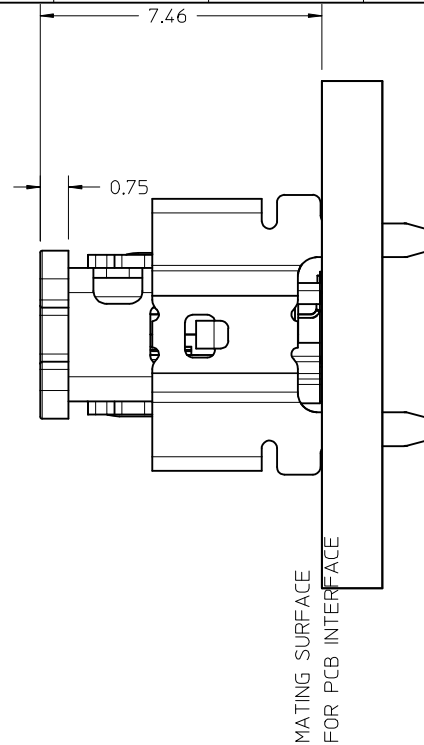
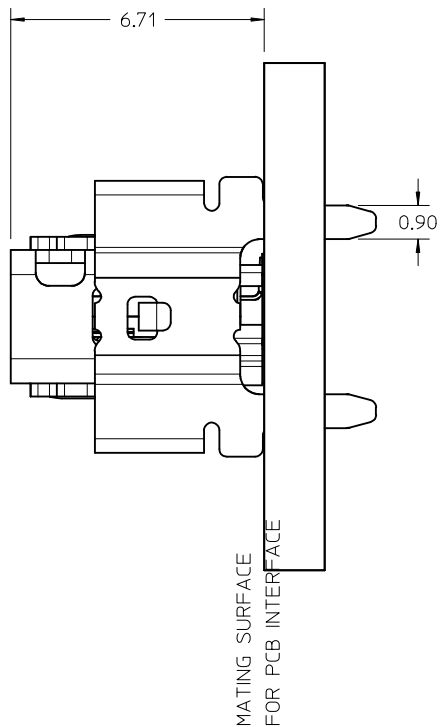
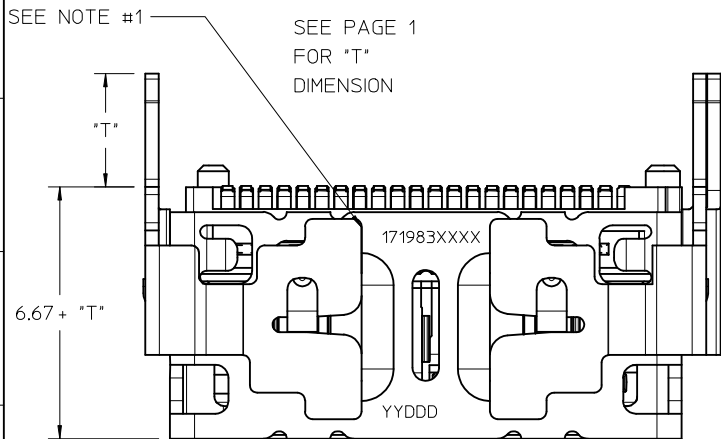
WITH CAP



- NOTES:
 1. PLANT CODE, MANUFACTURED DATE CODE (JULIAN CALENDAR) AND PART NUMBER
 2. SOLDER TAIL COPLANARITY 0.10 MAX

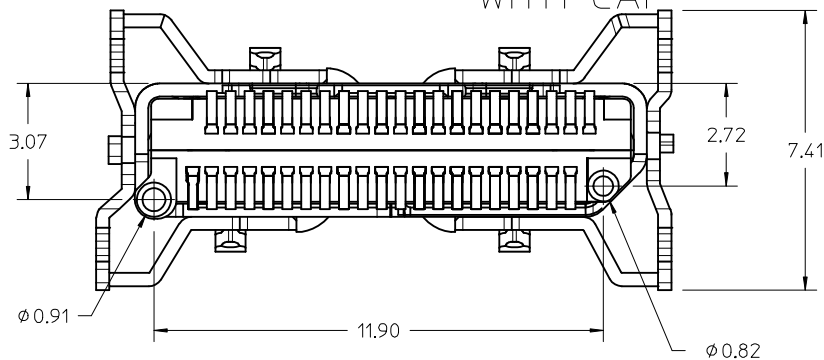
SEE SHEET 1 EC NO: UCP2017-1264 DRWNSVANG01 2016/12/06 CHKD:MJANTELEZIO 2016/12/06 APPR:TMCCLELL 2017/04/24	QUALITY SYMBOLS ▽=0 ▽=0 ▽=0	GENERAL TOLERANCES (UNLESS SPECIFIED)		DIMENSION STYLE MM ONLY		SCALE 10:1	DESIGN UNITS METRIC	THIRD ANGLE PROJECTION		
				mm	INCH	DRAWN BY DATE MJANTELEZIO 2015/10/22		TITLE NANO PITCH I/O VERTICAL PRE R1.0 - 16 GT/S molex		
						CHECKED BY DATE				
						APPROVED BY DATE MBANAKIS 2015/11/09		DOCUMENT NO. SD-171983-1000		SHEET NO. 3 OF 8
		ANGULAR ±1/2°		MATERIAL NO.		SEE SHEET 1				
		DRAFT WHERE APPLICABLE MUST REMAIN WITHIN DIMENSIONS		SIZE C		THIS DRAWING CONTAINS INFORMATION THAT IS PROPRIETARY TO MOLEX INCORPORATED AND SHOULD NOT BE USED WITHOUT WRITTEN PERMISSION				

42 CIRCUIT HD ASSEMBLY



NO CAP

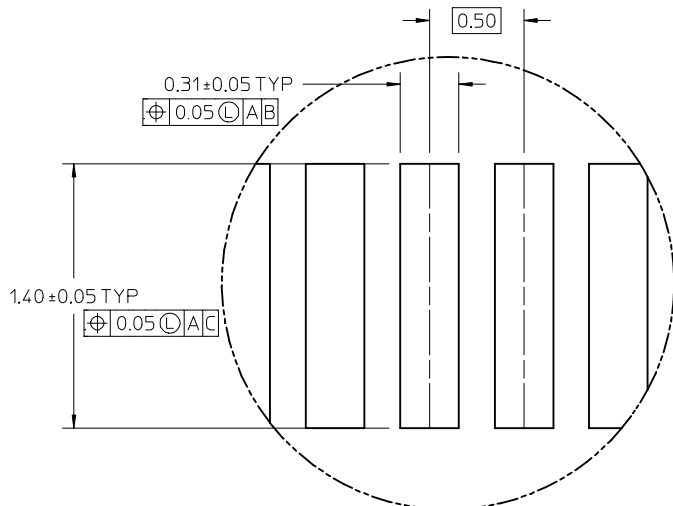
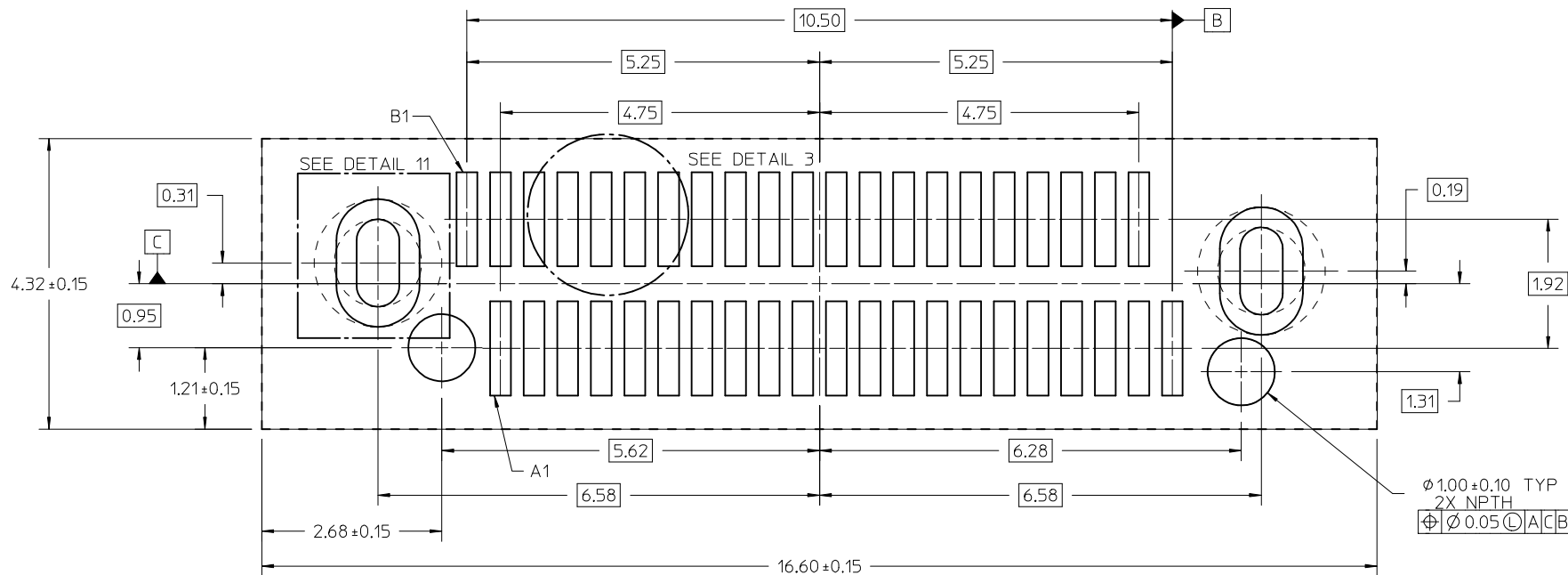
WITH CAP



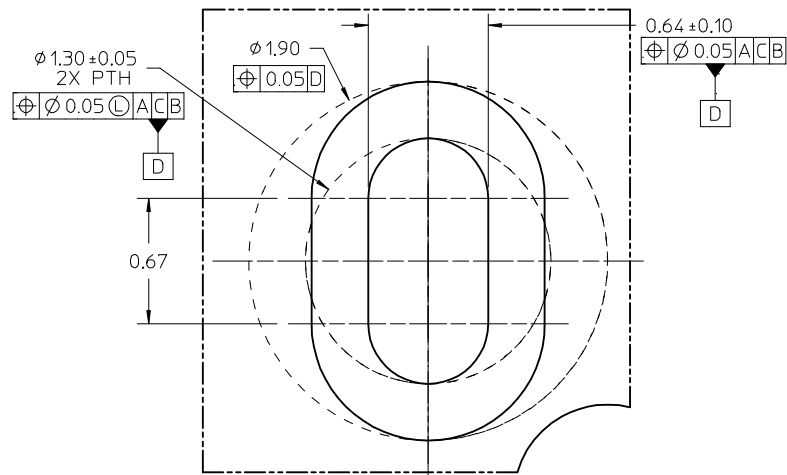
- NOTES:
1. MANUFACTURED DATE CODE (JULIAN CALENDAR) AND PART NUMBER
 2. SOLDER TAIL COPLANARITY 0.10 MAX

SEE SHEET 1 EC NO: UCP2017-1264 DRWNSVANG01 2016/12/06 CHKD:MJANTELEZIO 2016/12/06 APPR:TMCCLELL 2017/04/24	QUALITY SYMBOLS ▽=0 ▽=0 ▽=0	GENERAL TOLERANCES (UNLESS SPECIFIED)		DIMENSION STYLE MM ONLY	SCALE 10:1	DESIGN UNITS METRIC	THIRD ANGLE PROJECTION		
		4 PLACES ± --- ± ---	3 PLACES ± --- ± ---	DRAWN BY MJANTELEZIO	DATE 2015/10/22	TITLE NANO PITCH I/O VERTICAL PRE R1.0 - 16 GT/S			
		2 PLACES ± 0.13 ± ---	1 PLACE ± 0.25 ± ---	CHECKED BY	DATE	APPROVED BY MBANAKIS			
		0 PLACE ± --- ± ---	ANGULAR ± 1/2°	MATERIAL NO.		DOCUMENT NO. SD-171983-1000			
DRAFT WHERE APPLICABLE MUST REMAIN WITHIN DIMENSIONS		SEE SHEET 1		SIZE C		SHEET NO. 4 OF 8			
THIS DRAWING CONTAINS INFORMATION THAT IS PROPRIETARY TO MOLEX INCORPORATED AND SHOULD NOT BE USED WITHOUT WRITTEN PERMISSION									

42 CIRCUIT TAIL RECOMMENDED FOOTPRINT



DETAIL 3
SCALE 50:1



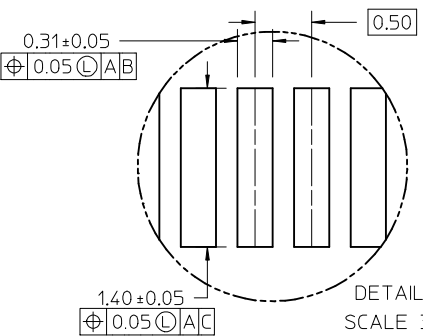
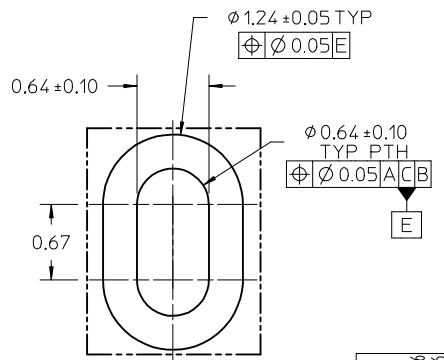
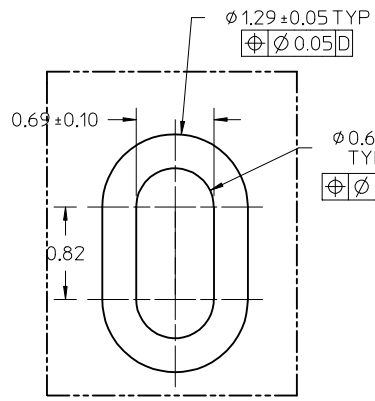
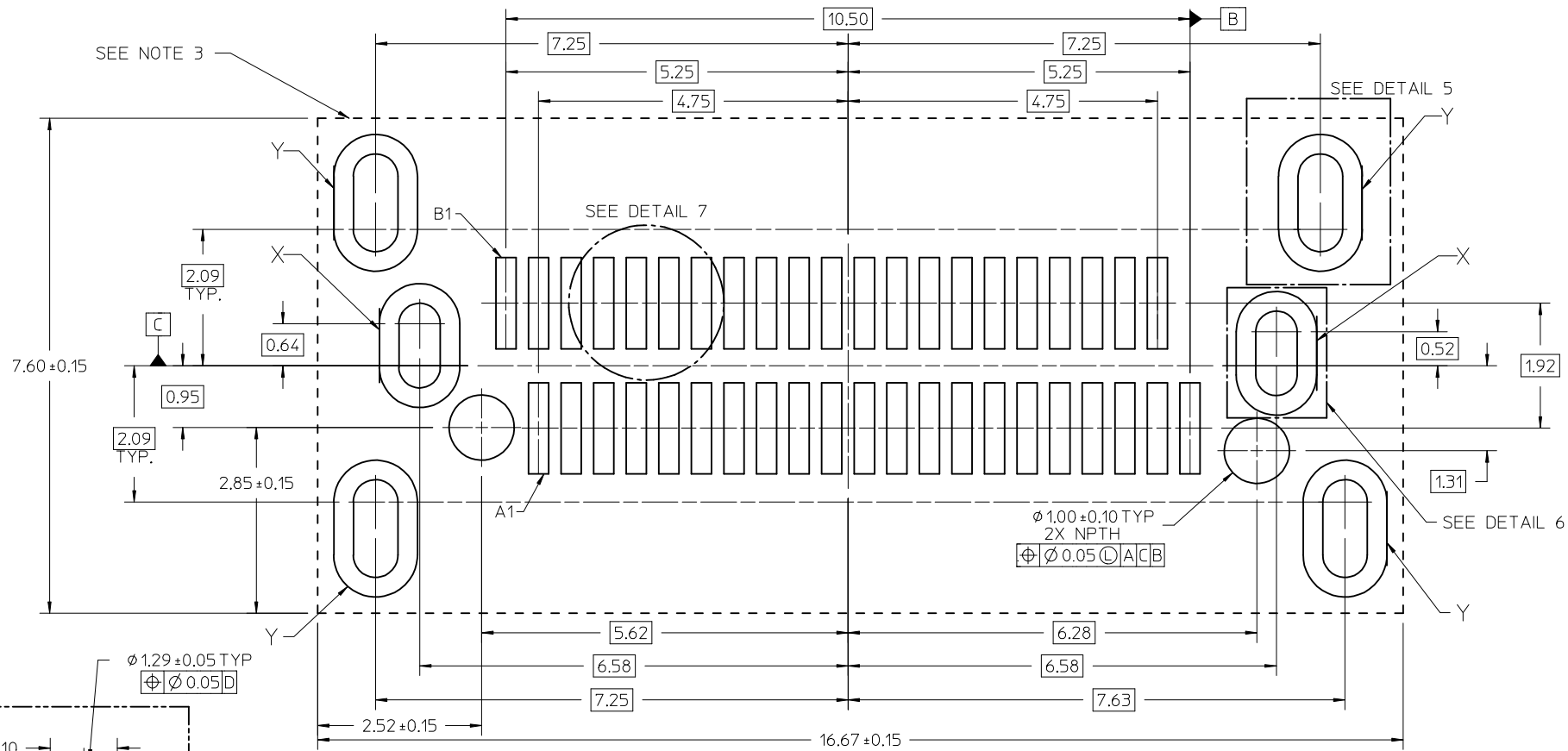
DETAIL 11
SCALE 50:1

- NOTES:
1. MINIMUM RECOMMENDED SPACING BETWEEN ADJACENT CONNECTORS IS 19.05mm
 2. MINIMUM RECOMMENDED PCB THICKNESS: 1.57mm
 3. CONNECTOR KEEP OUT AREA
 4. DATUM -A- ESTABLISHED FROM TOP SURFACE OF PCB

SEE SHEET 1 EC NO: UCP2017-1264 DRWNSVANG01 2016/12/06 CHKD:MJANTELEZIO 2016/12/06 APPR:TMCCLELL 2017/04/24	QUALITY SYMBOLS ▽=0 ▽=0 ▽=0	GENERAL TOLERANCES (UNLESS SPECIFIED)		DIMENSION STYLE MM ONLY		SCALE 10:1	DESIGN UNITS METRIC	THIRD ANGLE PROJECTION	
		4 PLACES ± --- ± ---	3 PLACES ± --- ± ---	2 PLACES ± 0.13 ± ---	1 PLACE ± 0.25 ± ---	0 PLACE ± --- ± ---	DRAWN BY DATE MJANTELEZIO 2015/10/22		CHECKED BY DATE
G	DESCRIPTION REV	ANGULAR ±1/2°		APPROVED BY DATE MBANAKIS 2015/11/09		MATERIAL NO.		DOCUMENT NO.	
		DRAFT WHERE APPLICABLE MUST REMAIN WITHIN DIMENSIONS		SEE SHEET 1		SD-171983-1000		SHEET NO. 5 OF 8	
THIS DRAWING CONTAINS INFORMATION THAT IS PROPRIETARY TO MOLEX INCORPORATED AND SHOULD NOT BE USED WITHOUT WRITTEN PERMISSION									

NANO PITCH I/O
VERTICAL
PRE R1.0 - 16 GT/S
molex

42 CIRCUIT COMMON TAIL/XD RECOMMENDED FOOTPRINT



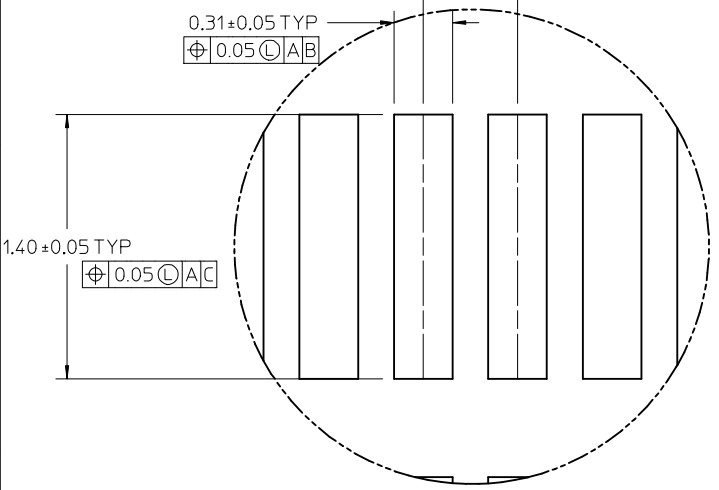
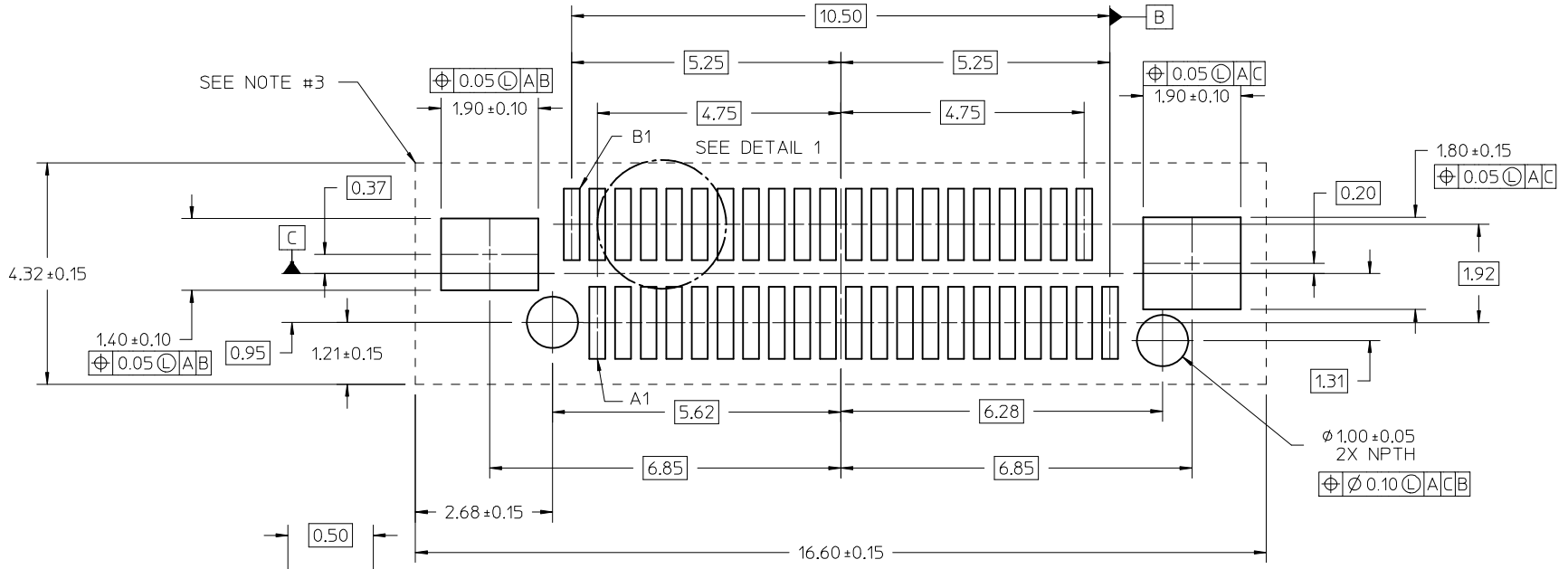
- NOTES:**
1. MINIMUM RECOMMENDED SPACING BETWEEN ADJACENT CONNECTOR IS 19.05mm
 2. MINIMUM RECOMMENDED PCB THICKNESS: 1.57mm
 3. CONNECTOR KEEP OUT AREA
 4. DATUM -A- ESTABLISHED FROM TOP SURFACE OF PCB
 5. COMMON FOOTPRINT SHOWN
FOR XD ONLY PATTERN USE ONLY PTH DENOTED "Y"
FOR TH ONLY PATTERN USE ONLY PTH DENOTED "X"

DETAIL 6
SCALE 30:1

DETAIL 7
SCALE 30:1

SEE SHEET 1 EC NO: UCP2017-1264 DRWNSVANG01 CHKD: MJANTELEZIO APPR: TMCLELL 2016/12/06 2016/12/06 2017/04/24	DESCRIPTION REV	QUALITY SYMBOLS	GENERAL TOLERANCES (UNLESS SPECIFIED)	DIMENSION STYLE MM ONLY	SCALE 15:1	DESIGN UNITS METRIC	THIRD ANGLE PROJECTION																
		▽=0 ▽=0 ▽=0	<table border="1" style="width: 100%; border-collapse: collapse;"> <tr> <th>PLACES</th> <th>mm</th> <th>INCH</th> </tr> <tr> <td>4 PLACES</td> <td>± ---</td> <td>± ---</td> </tr> <tr> <td>3 PLACES</td> <td>± ---</td> <td>± ---</td> </tr> <tr> <td>2 PLACES</td> <td>± 0.13</td> <td>± ---</td> </tr> <tr> <td>1 PLACE</td> <td>± 0.25</td> <td>± ---</td> </tr> <tr> <td>0 PLACE</td> <td>± ---</td> <td>± ---</td> </tr> </table>	PLACES	mm	INCH	4 PLACES	± ---	± ---	3 PLACES	± ---	± ---	2 PLACES	± 0.13	± ---	1 PLACE	± 0.25	± ---	0 PLACE	± ---	± ---	DRAWN BY: MJANTELEZIO DATE: 2015/10/22 CHECKED BY: _____ DATE: _____ APPROVED BY: MBANAKIS DATE: 2015/11/09	TITLE: NANO PITCH I/O VERTICAL PRE R1.0 - 16 GT/S molex DOCUMENT NO: SD-171983-1000 SHEET NO: 6 OF 8
		PLACES	mm	INCH																			
		4 PLACES	± ---	± ---																			
3 PLACES	± ---	± ---																					
2 PLACES	± 0.13	± ---																					
1 PLACE	± 0.25	± ---																					
0 PLACE	± ---	± ---																					
ANGULAR ±1/2° DRAFT WHERE APPLICABLE MUST REMAIN WITHIN DIMENSIONS		MATERIAL NO: SEE SHEET 1		THIS DRAWING CONTAINS INFORMATION THAT IS PROPRIETARY TO MOLEX INCORPORATED AND SHOULD NOT BE USED WITHOUT WRITTEN PERMISSION																			
SEE SHEET 1																							

42 CIRCUIT SMT RECOMMENDED FOOTPRINT

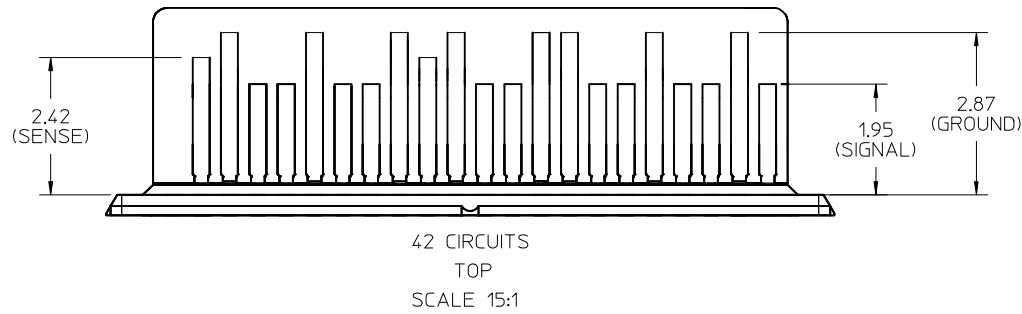
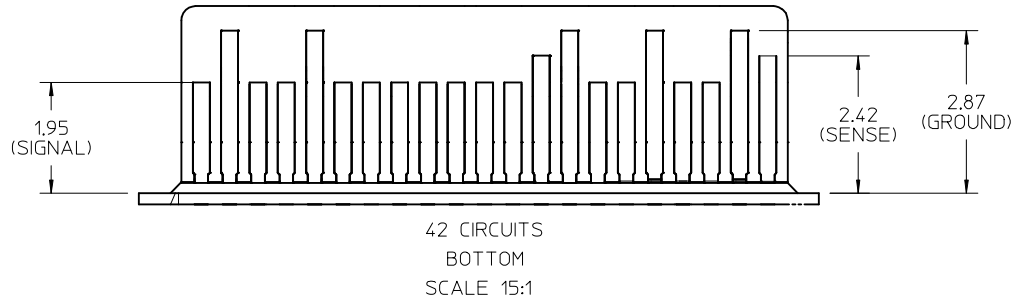


DETAIL 1
SCALE 50:1

- NOTES:
1. MINIMUM RECOMMENDED SPACING BETWEEN ADJACENT CONNECTORS IS 19.05mm
 2. MINIMUM RECOMMENDED PCB THICKNESS: 1.57mm
 3. CONNECTOR KEEP OUT AREA
 4. DATUM -A- ESTABLISHED FROM TOP SURFACE OF PCB

SEE SHEET 1 EC NO: UCP2017-1264 2016/12/06 DRWNSVANG01 CHKD:MJANTELEZIO 2016/12/06 APPR:TMCCLELL 2017/04/24	QUALITY SYMBOLS	GENERAL TOLERANCES (UNLESS SPECIFIED)		DIMENSION STYLE MM ONLY	SCALE 15:1	DESIGN UNITS METRIC	THIRD ANGLE PROJECTION
	▽=0	▽=0	▽=0	DRAWN BY MJANTELEZIO	DATE 2015/10/22	TITLE NANO PITCH I/O VERTICAL PRE R1.0 - 16 GT/S	
	▽=0	▽=0	▽=0	CHECKED BY	DATE		
	▽=0	▽=0	▽=0	APPROVED BY MBANAKIS		DATE 2015/11/09	molex
G	REV	DESCRIPTION	ANGULAR ±1/2°		MATERIAL NO.	DOCUMENT NO.	SHEET NO.
DRAFT WHERE APPLICABLE MUST REMAIN WITHIN DIMENSIONS			SEE SHEET 1		SD-171983-1000		7 OF 8
THIS DRAWING CONTAINS INFORMATION THAT IS PROPRIETARY TO MOLEX INCORPORATED AND SHOULD NOT BE USED WITHOUT WRITTEN PERMISSION							

INTERFACE PATTERN



SEE SHEET 1 EC NO: UCP2017-1264 DRWNSVANG01 2016/12/06 CHKD:MJANTELEZIO 2016/12/06 APPR:TMCCLELL 2017/04/24	QUALITY SYMBOLS	GENERAL TOLERANCES (UNLESS SPECIFIED)	DIMENSION STYLE MM ONLY	SCALE 15:1	DESIGN UNITS METRIC	THIRD ANGLE PROJECTION
	▽=0	mm INCH	DRAWN BY DATE MJANTELEZIO 2015/10/22	TITLE NANO PITCH I/O VERTICAL PRE R1.0 - 16 GT/S		
	▽=0	4 PLACES ± --- ± --- 3 PLACES ± --- ± --- 2 PLACES ± 0.13 ± --- 1 PLACE ± 0.25 ± --- 0 PLACE ± --- ± ---	CHECKED BY DATE	APPROVED BY DATE MBANAKIS 2015/11/09		
	▽=0	ANGULAR ±1/2°	MATERIAL NO.	DOCUMENT NO. SD-171983-1000	SHEET NO. 8 OF 8	
REV	DESCRIPTION	DRAFT WHERE APPLICABLE MUST REMAIN WITHIN DIMENSIONS	SIZE SEE SHEET 1	THIS DRAWING CONTAINS INFORMATION THAT IS PROPRIETARY TO MOLEX INCORPORATED AND SHOULD NOT BE USED WITHOUT WRITTEN PERMISSION		