



Chipsmall Limited consists of a professional team with an average of over 10 year of expertise in the distribution of electronic components. Based in Hongkong, we have already established firm and mutual-benefit business relationships with customers from,Europe,America and south Asia,supplying obsolete and hard-to-find components to meet their specific needs.

With the principle of “Quality Parts,Customers Priority,Honest Operation,and Considerate Service”,our business mainly focus on the distribution of electronic components. Line cards we deal with include Microchip,ALPS,ROHM,Xilinx,Pulse,ON,Everlight and Freescale. Main products comprise IC,Modules,Potentiometer,IC Socket,Relay,Connector.Our parts cover such applications as commercial,industrial, and automotives areas.

We are looking forward to setting up business relationship with you and hope to provide you with the best service and solution. Let us make a better world for our industry!



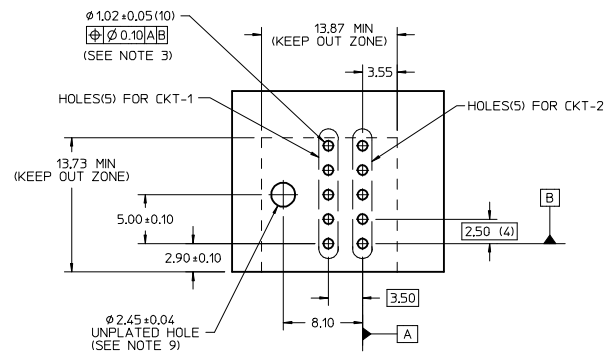
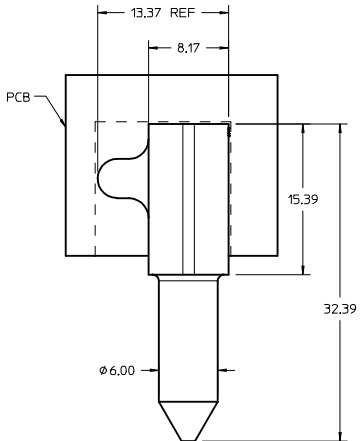
Contact us

Tel: +86-755-8981 8866 Fax: +86-755-8427 6832

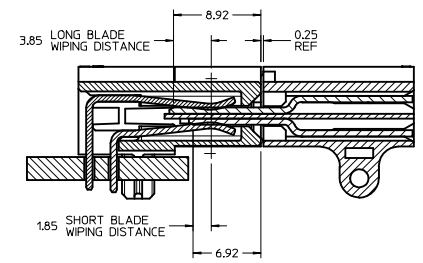
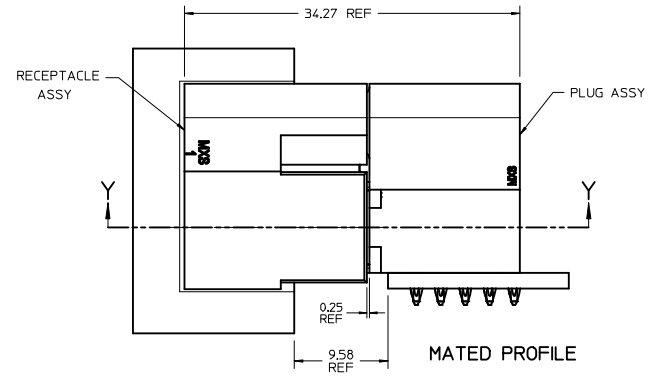
Email & Skype: info@chipsmall.com Web: www.chipsmall.com

Address: A1208, Overseas Decoration Building, #122 Zhenhua RD., Futian, Shenzhen, China

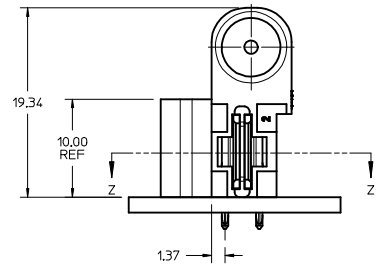




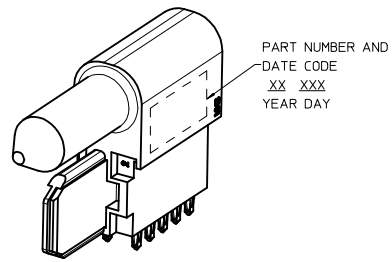
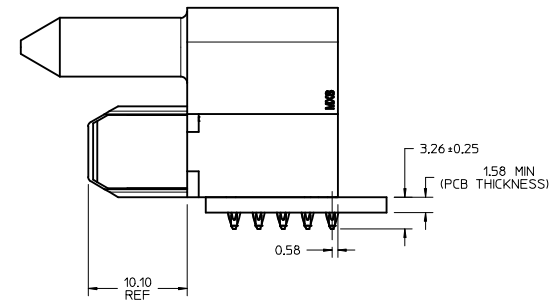
RECOMMENDED PCB LAYOUT AND KEEP OUT ZONE



SECTION Y-Y



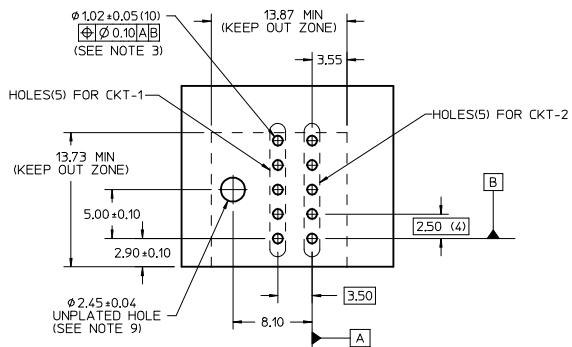
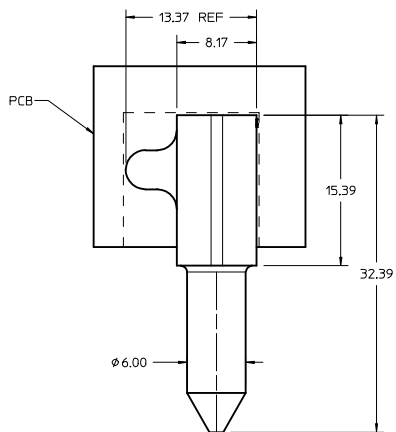
SECTION Z-Z



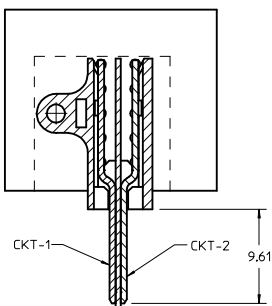
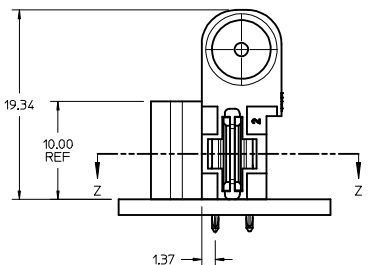
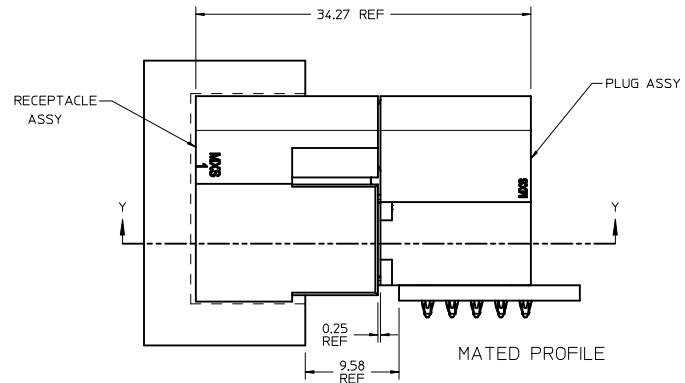
P/N: 172045-1001

- NOTES:
- MATERIAL:
 - HOUSINGS: LCP UL94, V-0, COLOR : BLACK
 - TERMINALS: HIGH CONDUCTIVITY COPPER ALLOY
 - PLATING: 1.27 MICROMETER MIN. (50 MICROINCH) NICKEL OVERALL WITH 2.54 MICROMETER MIN. (100 MICROINCH) SELECTIVE TIN ON TAILS AND 0.762 MICROMETER MIN. (30 MICROINCH) SELECTIVE GOLD ON CONTACT AREA
 - PACKAGING: ASSEMBLIES TO BE TRAY PACKED PER PACKAGING SPEC: PK-172045-1001
 - PLATED THRU HOLE SIZE, REFER TO PS-46436-100 FOR DETAILS
 - PRODUCT SPEC: PS-172047-1001
 - APPLICATION SPEC: AS-46436-100
 - PRODUCT TO MEET RoHS REQUIREMENTS
 - ASSEMBLY MATES TO MOLEX RECEPTACLE ASSEMBLY P/N 172047-1001.
 - TAIL DESIGN: COMPLIANT PIN.
 - SCREW NOT SUPPLIED BY MOLEX. USE #2-32 X .375 TYPE AB SELF TAPPING SCREW. RECOMMENDED SCREW LENGTH CAN BE USED WITH UP TO A 4.4mm MAX BOARD THICKNESS.
 - POWER CIRCUITS ARE LUBRICATED

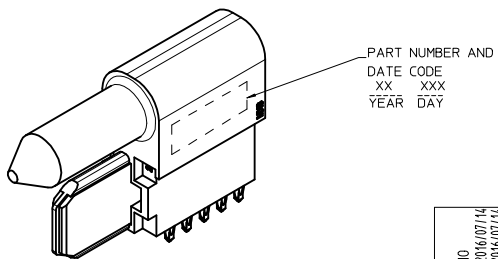
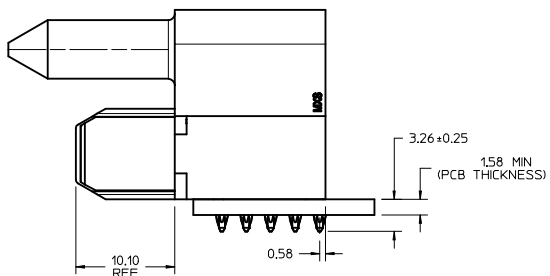
REVISED NOTE IEC NO. UCF2017-0110 DRAWN: JUILLES 2016/07/14 CHKD: BPSZCZOR 2016/07/14 APPR: BPSZCZOR 2016/07/26	QUALITY SYMBOLS	GENERAL TOLERANCES (UNLESS SPECIFIED)	DIMENSION STYLE	SCALE	DESIGN UNITS	THIRD ANGLE PROJECTION
	▽=0	mm INCH	MM ONLY	4:1	METRIC	ORTHOGONAL
	▽=0	4 PLACES ± --- ± ---	DRAWN BY DATE	EANG 2013/09/13	TITLE	ORTHO POWER PLUG ASSY
	▽=0	3 PLACES ± --- ± ---	CHECKED BY DATE	KHLIM 2013/10/22	MATERIAL NO.	172045-1001
		ANGULAR ±1/2°			DOCUMENT NO.	SD-172045-1001
		DRAFT WHERE APPLICABLE MUST REMAIN WITHIN DIMENSIONS				SHEET NO. 1 OF 1



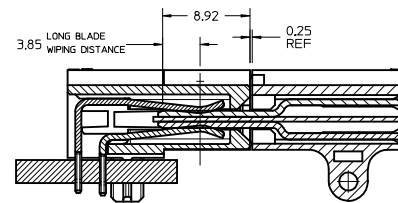
RECOMMENDED PCB LAYOUT AND KEEP OUT ZONE



SECTION Z-Z



P/N: 172045-1001



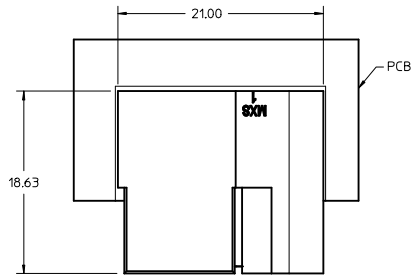
SECTION Y-Y

NOTES:

- MATERIAL:
 - HOUSINGS: LCP UL94, V-0. COLOR : BLACK
 - TERMINALS: HIGH CONDUCTIVITY COPPER ALLOY
 - PLATING: 1.27 MICROMETER MIN. (50 MICROINCH) NICKEL OVERALL WITH 2.54 MICROMETER MIN. (100 MICROINCH) SELECTIVE TIN ON TAILS AND 0.762 MICROMETER MIN. (30 MICROINCH) SELECTIVE GOLD ON CONTACT AREA
- PACKAGING: ASSEMBLIES TO BE TRAY PACKED PER PACKAGING SPEC: PK-172045-1002
- PLATED THRU HOLE SIZE. REFER TO PS-46436-100 FOR DETAILS
- PRODUCT SPEC: PS-172047-1002
- APPLICATION SPEC: AS-46436-100
- PRODUCT TO MEET RoHS REQUIREMENTS
- ASSEMBLY MATES TO MOLEX RECEPTACLE ASSEMBLY P/N 172047-1001.
- TAIL DESIGN: COMPLIANT PIN.
- SCREW NOT SUPPLIED BY MOLEX. USE #2-32 X .375 TYPE AB SELF TAPPING SCREW. RECOMMENDED SCREW LENGTH CAN BE USED WITH UP TO A 4.4mm MAX BOARD THICKNESS.
- POWER CIRCUITS ARE LUBRICATED

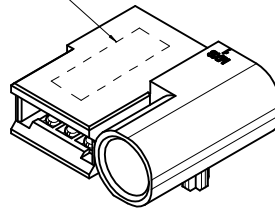
REVISED NOTE IEC NO. UCF2017-0110 DRAWN: JUILLES 2016/07/14 CHKD: BPI/SZCZOR 2016/07/14 APPR: BPI/SZCZOR 2016/07/26	QUALITY SYMBOLS	GENERAL TOLERANCES (UNLESS SPECIFIED)	DIMENSION STYLE	SCALE	DESIGN UNITS	THIRD ANGLE PROJECTION
	▽=0	mm INCH	MM ONLY	4:1	METRIC	ORTHOGONAL
	▽=0	4 PLACES ± --- ± ---	DRAWN BY DATE			ORTHOGONAL POWER PLUG ASSY molex
	▽=0	3 PLACES ± --- ± ---	CHECKED BY DATE		DOCUMENT NO.	
	ANGULAR ±1/2°	DRAFT WHERE APPLICABLE MUST REMAIN WITHIN DIMENSIONS	MATERIAL NO.			SHEET NO.
			172045-1002		SD-172045-1002	1 OF 1

THIS DRAWING CONTAINS INFORMATION THAT IS PROPRIETARY TO MOLEX INCORPORATED AND SHOULD NOT BE USED WITHOUT WRITTEN PERMISSION

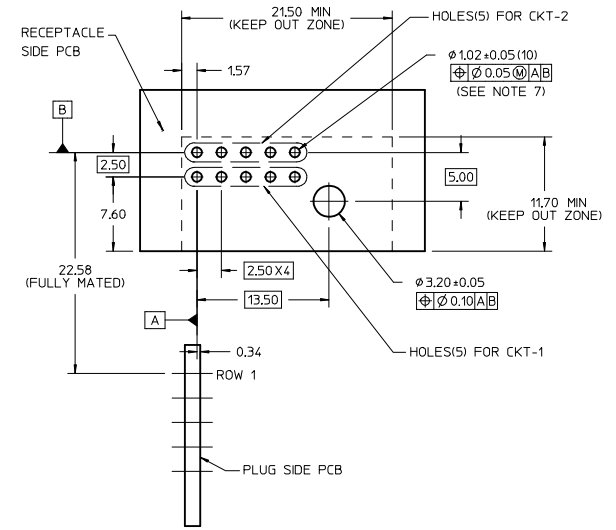
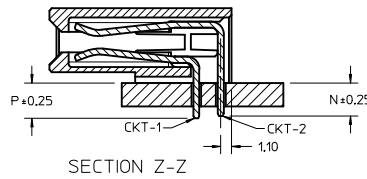
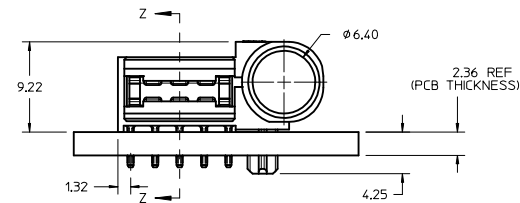


PART NUMBER AND DATE CODE

XX XXX
YEAR DAY



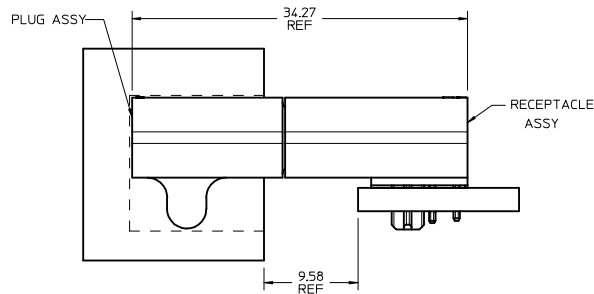
P/N: 172047-1001



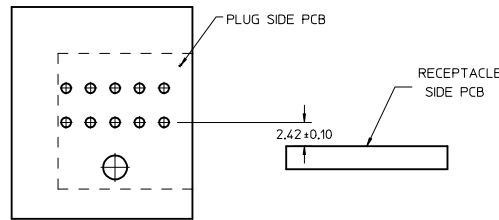
RECOMMENDED PCB LAYOUT AND KEEP OUT ZONE

NOTES:

1. MATERIAL HOUSING: GLASS FILLED LCP (LIQUID CRYSTAL POLYMER), 94V-0, COLOR-BLACK CONTACT: COPPER ALLOY
2. FINISH: SELECT GOLD - 0.76 MICROMETERS/30 MICROINCHES MINIMUM CONTACT SELECT TIN - 3.81 MICROMETERS/150 MICROINCHES MINIMUM TAIL BOTH OVER NICKEL - 1.27 MICROMETERS/50 MICROINCHES MINIMUM.
3. POWER TERMINALS LUBRICATED IN CONTACT AREA
4. PRODUCT SPECIFICATION: PS-172047-1001
5. PACKAGING: TRAY PACKED PER PACKAGING SPEC: PK-172047-1001
6. PRODUCT TO MEET RoHS COMPLIANT
7. PLATED THRU HOLE SIZE, REFER TO PS-46114-001 FOR DETAILS
8. ASSEMBLY MATES TO MOLEX PART P/N: 172045-1001
9. TAIL DESIGN: SOLDER TAIL



MATED PROFILE



MATERIAL P/N	DIM P	DIM N
1720471001	3.60	3.35
1720471002	4.50	4.25
1720471003	2.90	2.65

REV DIM TO REF IEC NO: UCP2016-2684 DRAWN: OULLES 2016/01/05 CHKDRP: SZCZOR 2016/01/06 APPROB: PLSZCZOR	QUALITY SYMBOLS	GENERAL TOLERANCES (UNLESS SPECIFIED)	DIMENSION STYLE	SCALE	DESIGN UNITS	THIRD ANGLE PROJECTION
	▽=0	mm INCH	MM ONLY	4:1	METRIC	ORTHOGONAL
	▽=0	4 PLACES +--- +--- 3 PLACES +--- +--- 2 PLACES +0.25 +--- 1 PLACE +0.25 +---	DRAWN BY DATE EANG 2013/09/23	DATE	TITLE ORTHOGONAL POWER RECEPTACLE ASSY	
	▽=0	ANGULAR ±1/2°	CHECKED BY DATE	DATE	APPROVED BY DATE KHLIM 2013/10/22	
DRAFT WHERE APPLICABLE MUST REMAIN WITHIN DIMENSIONS		SEE TABLE	MATERIAL NO.	DOCUMENT NO.	MOLEX INCORPORATED	
			SIZE D		SD-172047-1001	SHEET NO. 1 OF 1