



Chipsmall Limited consists of a professional team with an average of over 10 year of expertise in the distribution of electronic components. Based in Hongkong, we have already established firm and mutual-benefit business relationships with customers from,Europe,America and south Asia,supplying obsolete and hard-to-find components to meet their specific needs.

With the principle of "Quality Parts,Customers Priority,Honest Operation,and Considerate Service",our business mainly focus on the distribution of electronic components. Line cards we deal with include Microchip,ALPS,ROHM,Xilinx,Pulse,ON,Everlight and Freescale. Main products comprise IC,Modules,Potentiometer,IC Socket,Relay,Connector.Our parts cover such applications as commercial,industrial, and automotives areas.

We are looking forward to setting up business relationship with you and hope to provide you with the best service and solution. Let us make a better world for our industry!



Contact us

Tel: +86-755-8981 8866 Fax: +86-755-8427 6832

Email & Skype: info@chipsmall.com Web: www.chipsmall.com

Address: A1208, Overseas Decoration Building, #122 Zhenhua RD., Futian, Shenzhen, China



NOTES:

THIRD ANGLE PROJ.

1. MATERIALS AND FINISHES:

- BODY - BRASS, WHITE BRONZE PLATING
SOLDER NUT - BRASS, GOLD PLATING
CONTACT - PHOSPHOR BRONZE, GOLD PLATING
INSULATOR - PTFE, NATURAL

2. ELECTRICAL:

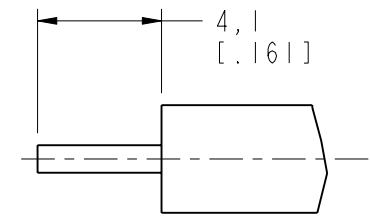
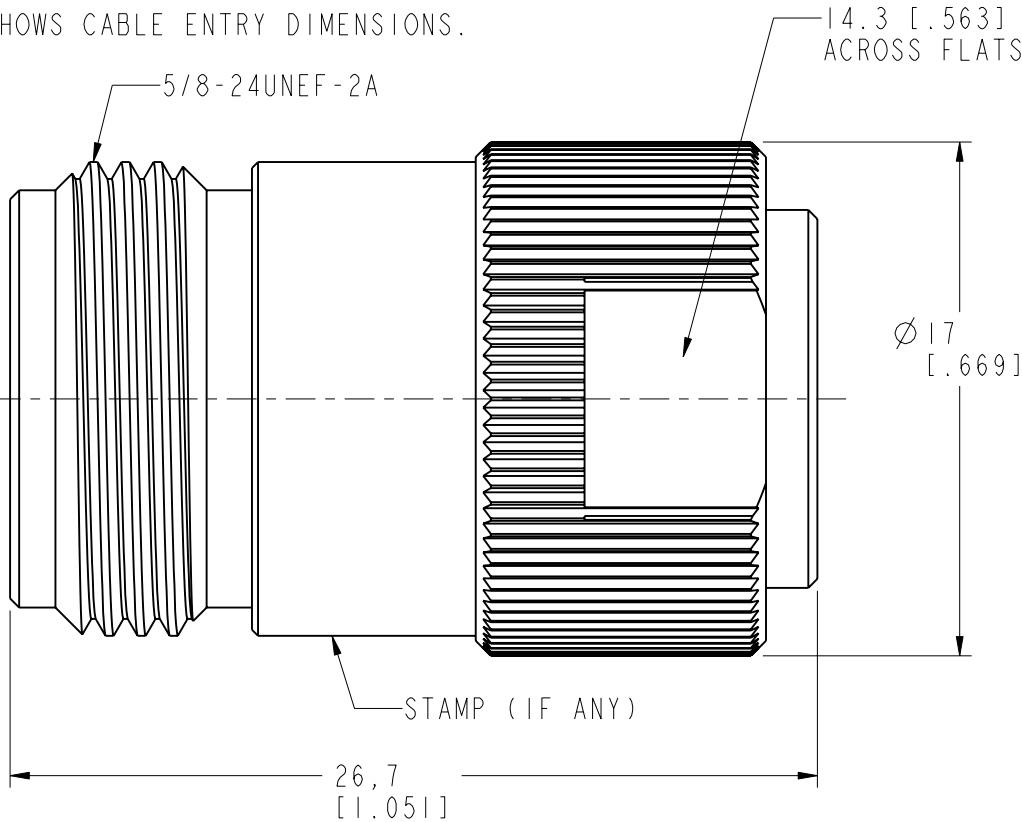
- A. IMPEDANCE: 50 OHM
B. FREQUENCY RANGE: 0-6 GHz
C. VSWR (RETURN LOSS): 1.3 MAX.
D. DIELECTRIC WITHSTANDING VOLTAGE: 2500 VRMS, MIN.

3. MECHANICAL:

- A. DURABILITY: 500 CYCLES MIN.
B. TEMPERATURE RANGE: -65° C TO +165° C

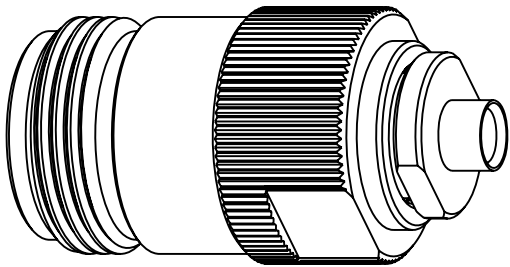
4. CRIMPED CONTACT PIN HEX. CRIMP SIZE .100"

5. SHOWS CABLE ENTRY DIMENSIONS.

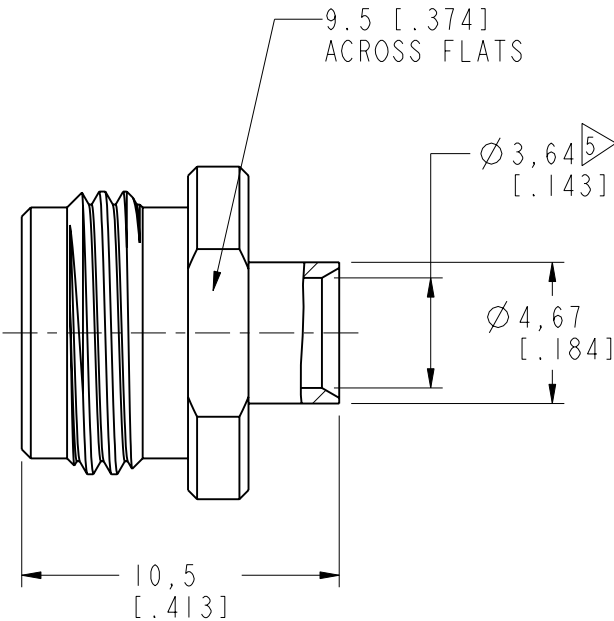
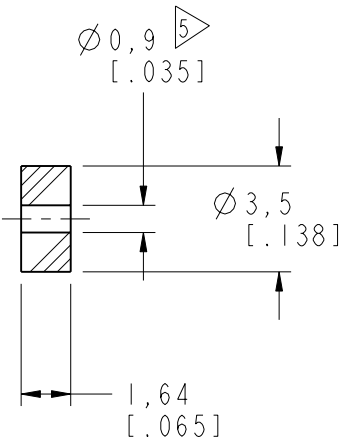
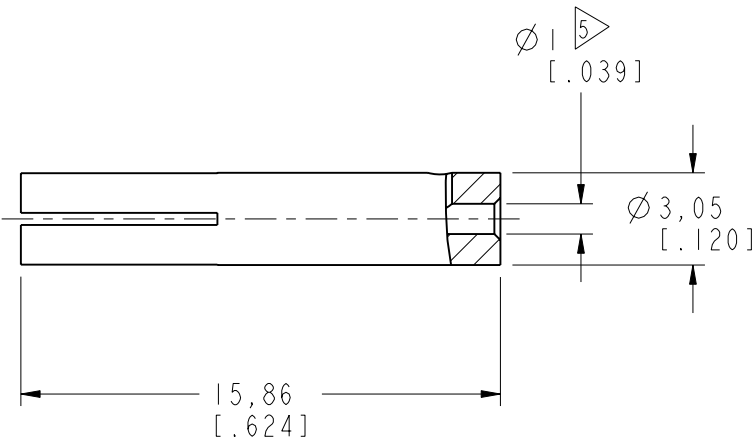


RECOMMENDED
CABLE STRIPPING DIM'S

REVISIONS				
REV	DESCRIPTION	DATE	ECO	APPR
NC	INITIAL RELEASE	23-Oct-00	-----	GRS
A	UPDATE DRAWING FORMAT, REVISE PLATING TO NEXCOTE	25-Jun-06	-----	GRS
B	SYNC, UPDATED DRAWING FORMAT\N/A	24-Aug-16	01664	SH



SCALE 2.000



CUSTOMER OUTLINE DRAWING

ALL OTHER SHEETS ARE FOR INTERNAL USE ONLY

UNLESS OTHERWISE SPECIFIED, DIMENSIONS ARE IN METRIC AND TOLERANCES ARE: <0.5mm ± 0.05mm 0.5 - 6mm ± 0.1mm 6 - 30mm ± 0.2mm 30 - 120mm ± 0.3mm ANGLES ± 1°	MATERIAL -	DRAWN M. ZHANG	DATE 24-Aug-16	TITLE N DIRECT SOLDER JACK (FOR .141" SEMI RIGID CABLE)		Amphenol RF www.amphenolrf.com	
		ENGINEER S. LI	DATE 03-Dec-10				
		REFERENCE AND CONFIGURATION LEVEL: In Work	APPROVED S. HSIEH	DATE 24-Aug-16	SCALE: 4.0:1.0	SHEET 2 OF 2	DRAWING NO. N6181A1-AX3GT5GP-141-50
		FINISH	CAD FILE		DWG SIZE B	REV B	ITEM NO. 036181AAA42WK5F PART NO. 172238