



Chipsmall Limited consists of a professional team with an average of over 10 year of expertise in the distribution of electronic components. Based in Hongkong, we have already established firm and mutual-benefit business relationships with customers from,Europe,America and south Asia,supplying obsolete and hard-to-find components to meet their specific needs.

With the principle of “Quality Parts,Customers Priority,Honest Operation,and Considerate Service”,our business mainly focus on the distribution of electronic components. Line cards we deal with include Microchip,ALPS,ROHM,Xilinx,Pulse,ON,Everlight and Freescale. Main products comprise IC,Modules,Potentiometer,IC Socket,Relay,Connector.Our parts cover such applications as commercial,industrial, and automotives areas.

We are looking forward to setting up business relationship with you and hope to provide you with the best service and solution. Let us make a better world for our industry!



Contact us

Tel: +86-755-8981 8866 Fax: +86-755-8427 6832

Email & Skype: info@chipsmall.com Web: www.chipsmall.com

Address: A1208, Overseas Decoration Building, #122 Zhenhua RD., Futian, Shenzhen, China



NOTES:

I. MATERIALS AND FINISHES:

- | | |
|-------------|---------------------------------|
| HEX NUT | - BRASS, WHITE BRONZE PLATING |
| LOCK WASHER | - BRASS, WHITE BRONZE PLATING |
| GASKET | - SILICONE RUBBER, RED |
| FERRULE | - BRASS, WHITE BRONZE PLATING |
| SLEEVE | - PTFE, NATURAL |
| CONTACT | - PHOSPHOR BRONZE, GOLD PLATING |
| BODY | - BRASS, WHITE BRONZE PLATING |
| INSULATOR | - PTFE, NATURAL |

2. ELECTRICAL:

- A. IMPEDANCE: 50 OHM
B. FREQUENCY RANGE: 0-6 GHz
C. VSWR (RETURN LOSS): 1.2 MAX. @ 0-4 GHz
D. INSERTION LOSS: <0.3 dB TO <0.7 dB @ DC-4 GHz
E. D.W.V: 2500 VRMS, MIN.

3. MECHANICAL:

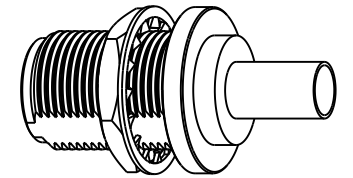
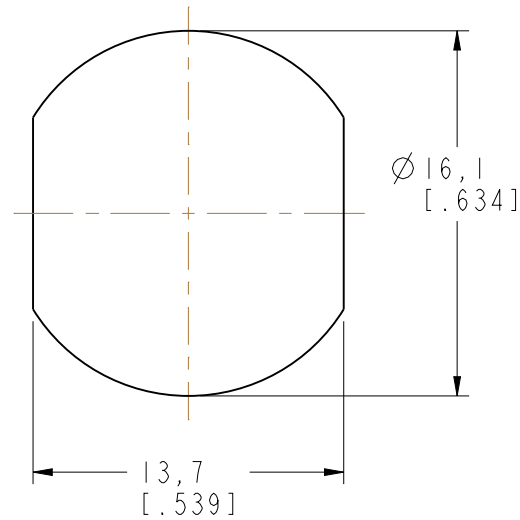
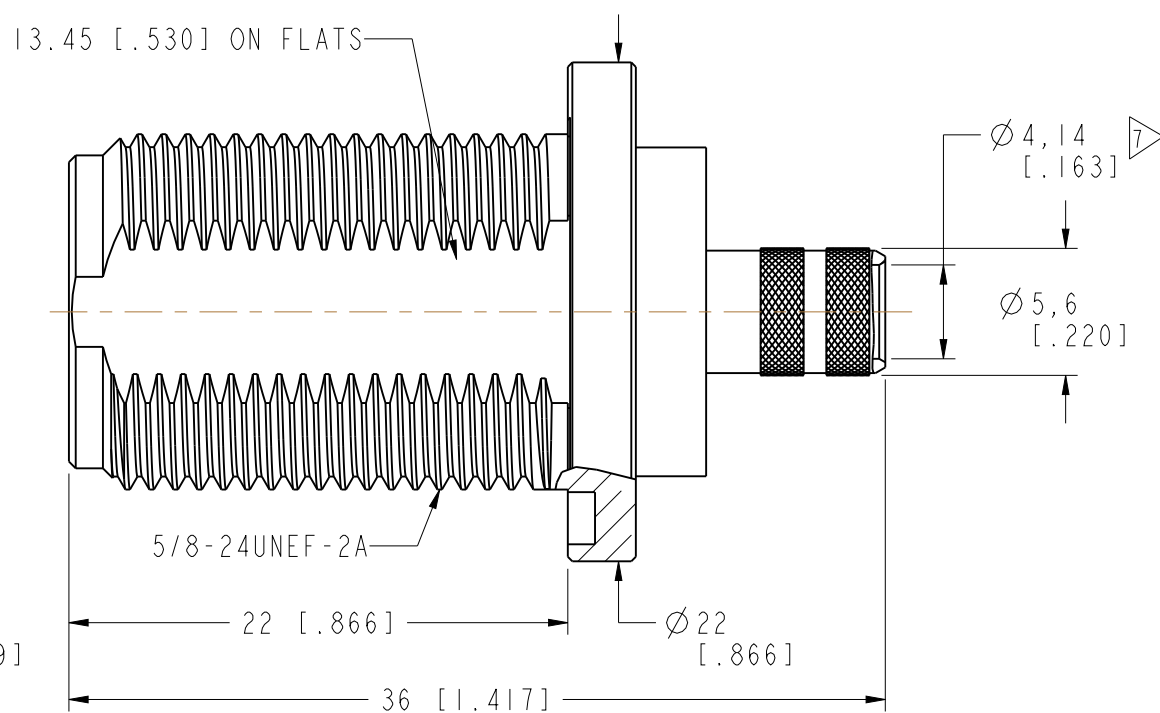
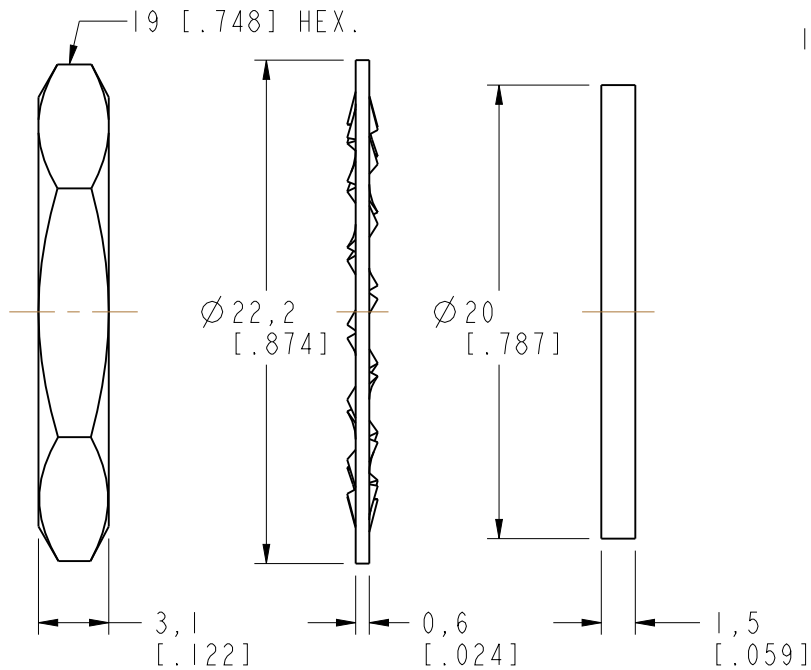
- A. DURABILITY: 500 CYCLES MIN.
B. TEMPERATURE RANGE: -65°C TO +165°C

4. CRIMPED FERRULE HEX. CRIMP SIZE .255"

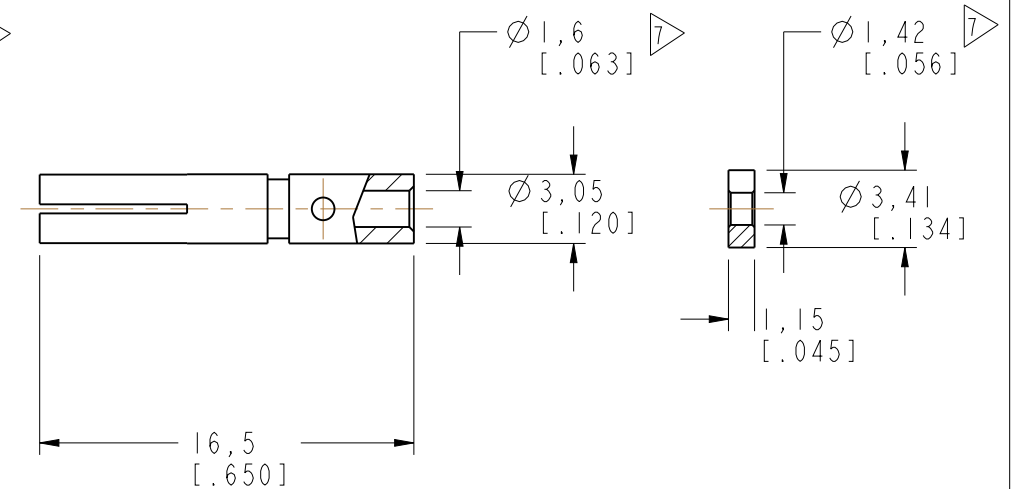
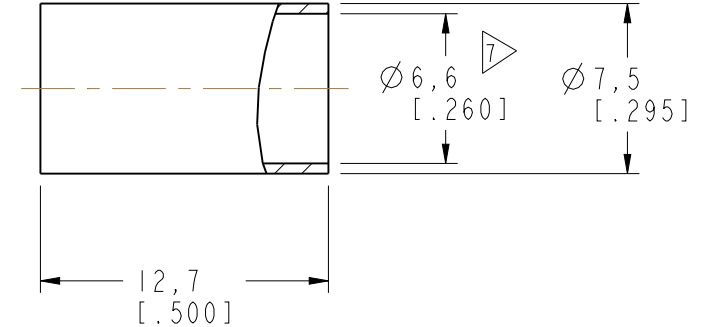
5. CRIMPED CONTACT PIN HEX. CRIMP SIZE .105" OR SOLDER

6. MAX. PANEL THICKNESS=6.5MM

7. SHOWS CABLE ENTRY DIMENSIONS.



SCALE 1.000



CUSTOMER OUTLINE DRAWING

ALL OTHER SHEETS ARE FOR INTERNAL USE ONLY

UNLESS OTHERWISE SPECIFIED, DIMENSIONS ARE IN METRIC AND TOLERANCES ARE: <0.5mm 0.5 - 6mm 6 - 30mm 30 - 120mm ANGLES ± 0.05mm ±0.1mm ±0.2mm ± 0.3mm ±1° NOTICE - These drawings, specifications, or other data (1) are, and remain the property of Amphenol corp. (2) must be returned upon request; and (3) are confidential and not to be disclosed to any person other than those to whom they are given by Amphenol Corp. the furnishing of these drawings, specifications, or other data by Amphenol Corp., or to any other person to anyone for any purpose is not to be regarded by implication or otherwise in any manner licensing, granting rights to permitting such holder or any other person to manufacture, use or sell any product, process or design, patented or otherwise, that may in any way be related to or disclosed by said drawings, specifications, or other data.	MATERIAL -	DRAWN R.MAO	DATE 10-Dec-14	TITLE N BULKHEAD CRIMP JACK (FOR LMR-240 CABLE)		Amphenol Connex	
		ENGINEER R.MAO	DATE 10-Dec-14			DRAWING NO.	
	REFERENCE EAR# 6467 N6421A1-AT5GP-LMR240-50 CONFIGURATION LEVEL: In Work	APPROVED B.C. GLEISSNER	DATE 25-Mar-15	SCALE: 3.0:1.0	SHEET	3 OF 3	ITEM NO.
		CAD FILE		DWG SIZE B		REV A	PART NO. 172386
	FINISH						