



Chipsmall Limited consists of a professional team with an average of over 10 year of expertise in the distribution of electronic components. Based in Hongkong, we have already established firm and mutual-benefit business relationships with customers from,Europe,America and south Asia,supplying obsolete and hard-to-find components to meet their specific needs.

With the principle of "Quality Parts,Customers Priority,Honest Operation,and Considerate Service",our business mainly focus on the distribution of electronic components. Line cards we deal with include Microchip,ALPS,ROHM,Xilinx,Pulse,ON,Everlight and Freescale. Main products comprise IC,Modules,Potentiometer,IC Socket,Relay,Connector.Our parts cover such applications as commercial,industrial, and automotives areas.

We are looking forward to setting up business relationship with you and hope to provide you with the best service and solution. Let us make a better world for our industry!



Contact us

Tel: +86-755-8981 8866 Fax: +86-755-8427 6832

Email & Skype: info@chipsmall.com Web: www.chipsmall.com

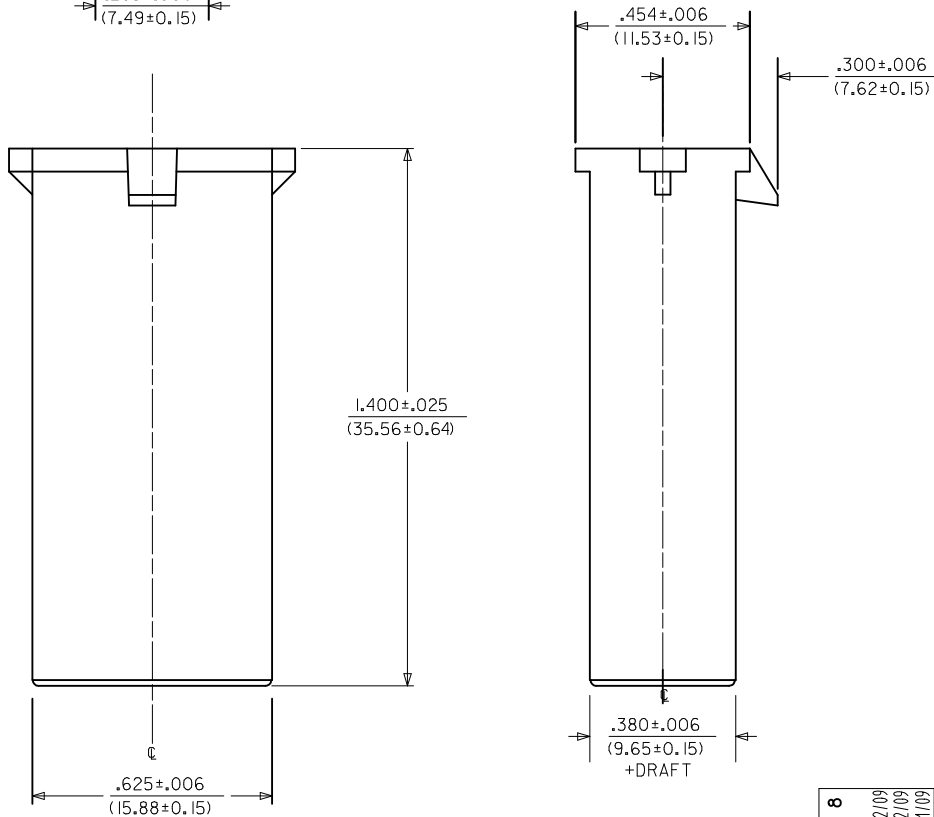
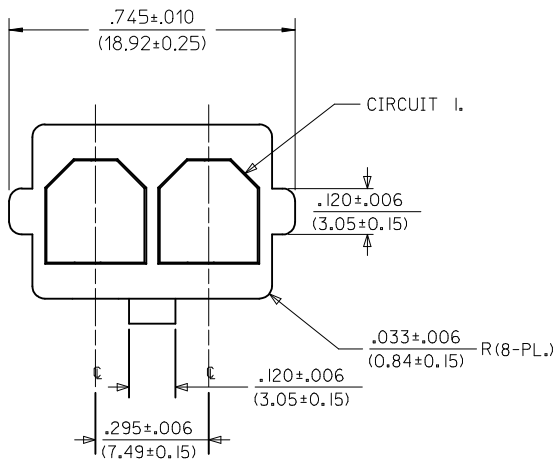
Address: A1208, Overseas Decoration Building, #122 Zhenhua RD., Futian, Shenzhen, China



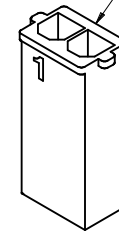
| ITEM NUMBER | MATERIAL | COLOR |
|-------------|---|-------|
| 172673-2002 | UL94V-0 NYLON | BLACK |
| 172673-3002 | UL94V-2 NYLON, IEC 60335-1, GLOW WIRE CAPABLE | BLACK |

NOTES:

1. MATERIAL: SEE CHART.
2. FINISH: NONE.
3. PRODUCT SPECIFICATION: PS-171825-001.
4. PACKAGING: PK-43680-001.
5. THIS CONNECTOR HOUSING FOR USE WITH 171826 TERMINALS.
6. THIS CONNECTOR HOUSING WILL MATE TO 172672 OR 44441 HOUSINGS.
7. PARTS CONFORM TO CLASS B REQUIREMENTS OF COSMETIC SPEC PS-45499-002.
- SOME PARTS MAY HAVE A BLEMISH NEAR THE GATE THAT DOES NOT AFFECT FUNCTIONALITY.
8. MOLDED IN SERIES NO. MAY BE 172673 OR 43680.

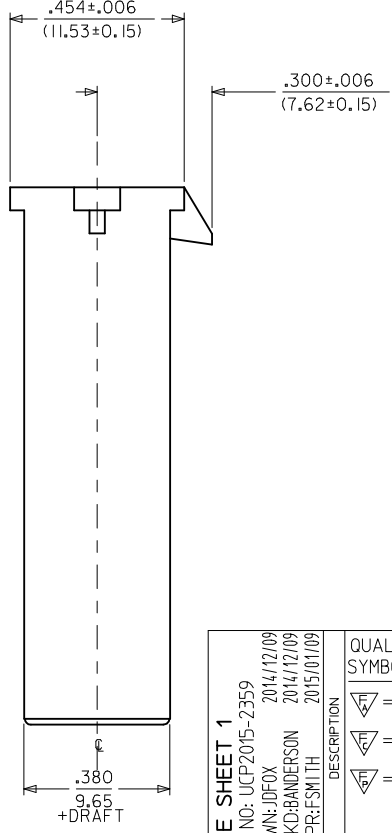
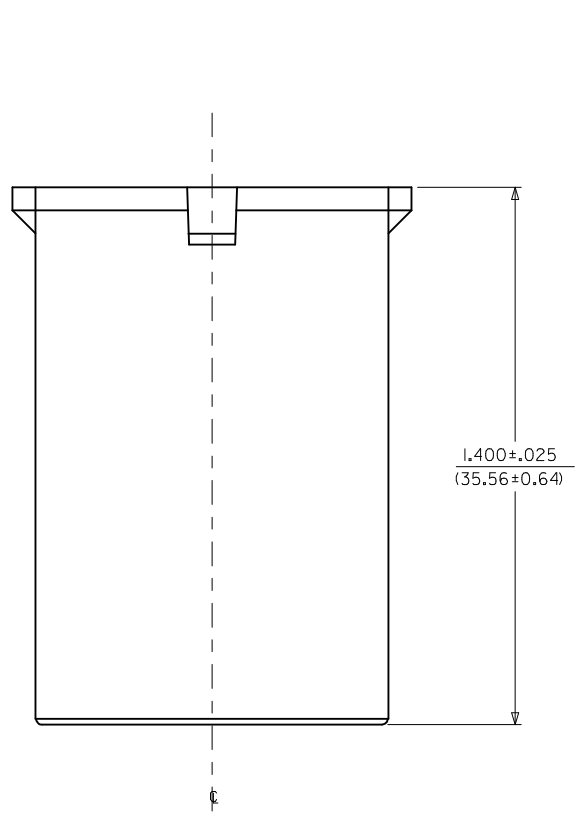
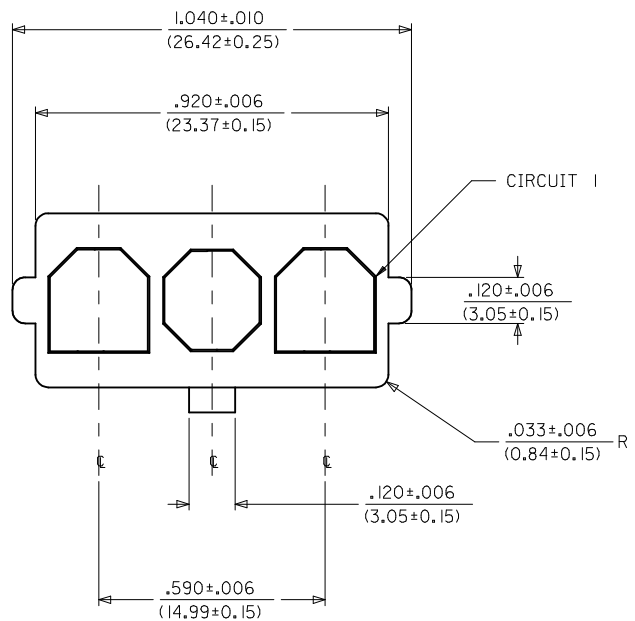


LOCKING NUB IS LOCATED HERE



172673-~~x~~002
(NO SCALE)

| GATE BLEMISH, NOTE 8 IEC NO: UCP2015-2359 DRWN: DFOX 2014/12/09 CHKD: BANDERSON 2014/12/09 APPR: FSMITH 2015/01/09 | QUALITY SYMBOLS | GENERAL TOLERANCES (UNLESS SPECIFIED) | DIMENSION STYLE | SCALE | DESIGN UNITS | THIRD ANGLE PROJECTION | | | | | | | | | | | | | | | | | | |
|---|--|---|---|-------|--------------|------------------------|--------|--------|----------|--------|--------|----------|--------|--------|---------|--------|--------|---------|--------|--------|-------|-----|------|--|
| | $\nabla = 0$ $\nabla = 0$ $\nabla = 0$ | <table border="1"> <thead> <tr> <th></th> <th>mm</th> <th>INCH</th> </tr> </thead> <tbody> <tr> <td>4 PLACES</td> <td>± .---</td> <td>± .---</td> </tr> <tr> <td>3 PLACES</td> <td>± .---</td> <td>± .010</td> </tr> <tr> <td>2 PLACES</td> <td>± 0.25</td> <td>± .014</td> </tr> <tr> <td>1 PLACE</td> <td>± 0.35</td> <td>± .---</td> </tr> <tr> <td>0 PLACE</td> <td>± .---</td> <td>± .---</td> </tr> </tbody> </table> | | mm | INCH | 4 PLACES | ± .--- | ± .--- | 3 PLACES | ± .--- | ± .010 | 2 PLACES | ± 0.25 | ± .014 | 1 PLACE | ± 0.35 | ± .--- | 0 PLACE | ± .--- | ± .--- | IN/MM | 4:1 | INCH | |
| | | mm | INCH | | | | | | | | | | | | | | | | | | | | | |
| | 4 PLACES | ± .--- | ± .--- | | | | | | | | | | | | | | | | | | | | | |
| 3 PLACES | ± .--- | ± .010 | | | | | | | | | | | | | | | | | | | | | | |
| 2 PLACES | ± 0.25 | ± .014 | | | | | | | | | | | | | | | | | | | | | | |
| 1 PLACE | ± 0.35 | ± .--- | | | | | | | | | | | | | | | | | | | | | | |
| 0 PLACE | ± .--- | ± .--- | | | | | | | | | | | | | | | | | | | | | | |
| DESCRIPTION | ANGULAR ±1/2° | DRAWN BY DATE | TITLE | | | | | | | | | | | | | | | | | | | | | |
| REV | DRAFT WHERE APPLICABLE MUST REMAIN WITHIN DIMENSIONS | JDFOX 2014/07/24 | SUPER-SABRE PLUG HOUSING | | | | | | | | | | | | | | | | | | | | | |
| A2 | | CHECKED BY DATE | molex | | | | | | | | | | | | | | | | | | | | | |
| | | BANDERSON 2014/07/24 | DOCUMENT NO. SD-172673-001 | | | | | | | | | | | | | | | | | | | | | |
| | | APPROVED BY DATE | SHEET NO. 1 OF 5 | | | | | | | | | | | | | | | | | | | | | |
| | | FSMITH 2014/07/31 | THIS DRAWING CONTAINS INFORMATION THAT IS PROPRIETARY TO MOLEX INCORPORATED AND SHOULD NOT BE USED WITHOUT WRITTEN PERMISSION | | | | | | | | | | | | | | | | | | | | | |

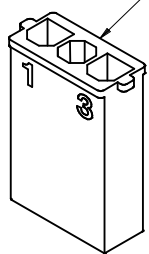


| ITEM NUMBER | MATERIAL | COLOR |
|-------------|---|-------|
| 172673-2003 | UL94V-0 NYLON | BLACK |
| 172673-3003 | UL94V-2 NYLON, IEC 60335-1, GLOW WIRE CAPABLE | BLACK |

NOTES:

1. MATERIAL: SEE CHART.
2. FINISH: NONE.
3. PRODUCT SPECIFICATION: PS-171825-001.
4. PACKAGING: PK-43680-001.
5. THIS CONNECTOR HOUSING FOR USE WITH 171826 TERMINALS.
6. THIS CONNECTOR HOUSING WILL MATE TO 172672 OR 44441 HOUSINGS.
7. PARTS CONFORM TO CLASS B REQUIREMENTS OF COSMETIC SPEC PS-45499-002.
- SOME PARTS MAY HAVE A BLEMISH NEAR THE GATE THAT DOES NOT AFFECT FUNCTIONALITY.
8. MOLDED IN SERIES NO. MAY BE 172673 OR 43680.

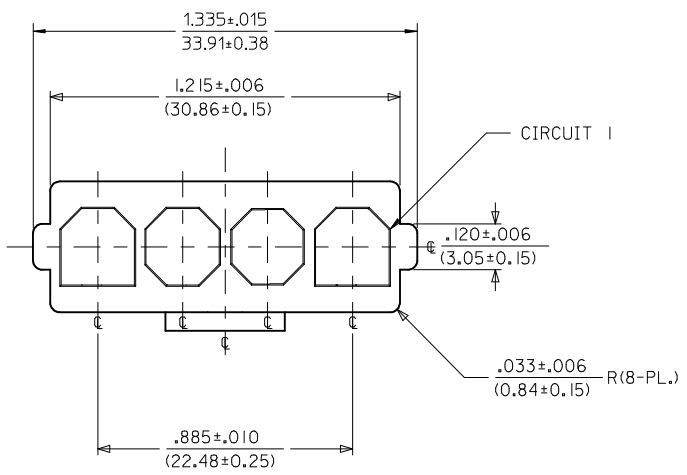
LOCKING NUB IS LOCATED HERE



172673-*003
(NO SCALE)

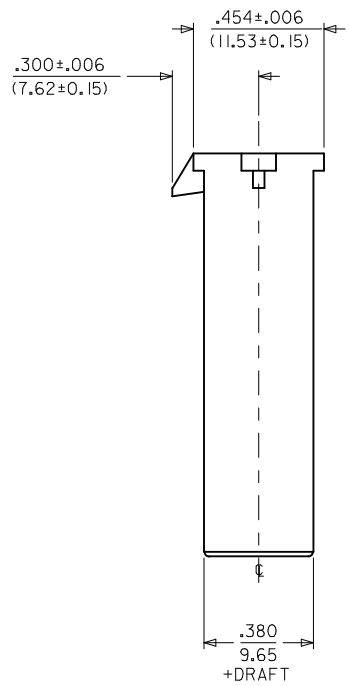
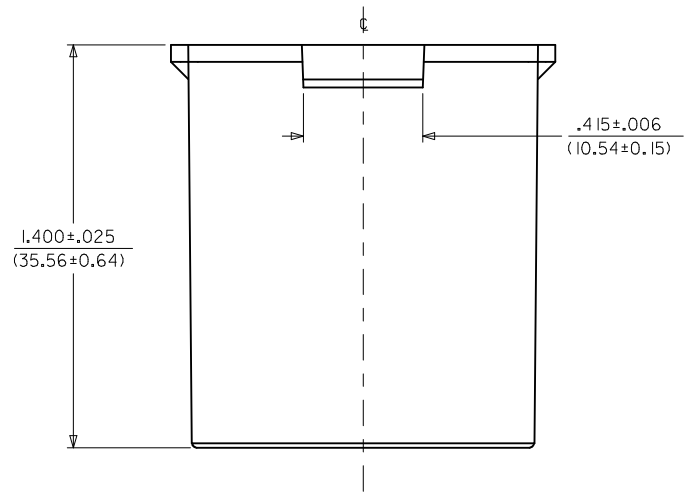
| | | | | | | |
|---|--|---------------------------------------|---|-------|--------------------------|------------------------|
| SEE SHEET 1 EC NO: UCP2015-2359 DRWN: JDOX 2014/12/09 CHKD: BANDERSON 2014/12/09 APPR: FSMITH 2015/01/09 | QUALITY SYMBOLS | GENERAL TOLERANCES (UNLESS SPECIFIED) | DIMENSION STYLE | SCALE | DESIGN UNITS | THIRD ANGLE PROJECTION |
| | ▽=0 | mm INCH | IN/MM | 4:1 | INCH | |
| | ▽=0 | 4 PLACES ± --- ± --- | DRAWN BY DATE | TITLE | SUPER-SABRE PLUG HOUSING | |
| | ▽=0 | 3 PLACES ± --- ± .010 | CHECKED BY DATE | molex | | |
| | 2 PLACES ± 0.25 ± .014 | APPROVED BY DATE | SD-172673-001 | | | |
| | 1 PLACE ± 0.35 ± --- | DATE | 2 OF 5 | | | |
| | 0 PLACE ± --- ± --- | | THIS DRAWING CONTAINS INFORMATION THAT IS PROPRIETARY TO MOLEX INCORPORATED AND SHOULD NOT BE USED WITHOUT WRITTEN PERMISSION | | | |
| | ANGULAR ±1/2° | | | | | |
| | DRAFT WHERE APPLICABLE MUST REMAIN WITHIN DIMENSIONS | | | | | |

| ITEM NUMBER | MATERIAL | COLOR |
|-------------|---|-------|
| 172673-2004 | UL94V-0 NYLON | BLACK |
| 172673-3004 | UL94V-2 NYLON IEC 60335-1 GLOW WIRE CAPABLE | BLACK |

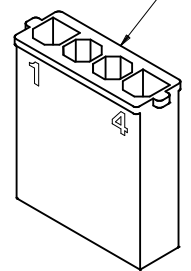


NOTE:

1. MATERIAL: SEE CHART.
2. FINISH: NONE.
3. PRODUCT SPECIFICATION: PS-171825-001.
4. PACKAGING: PK-43680-001.
5. THIS CONNECTOR HOUSING FOR USE WITH 171826 TERMINALS.
6. THIS CONNECTOR HOUSING WILL MATE TO 172672 OR 44441 HOUSINGS.
7. PARTS CONFORM TO CLASS B REQUIREMENTS OF COSMETIC SPEC PS-45499-002.
- SOME PARTS MAY HAVE A BLEMISH NEAR THE GATE THAT DOES NOT AFFECT FUNCTIONALITY.
8. MOLDED IN SERIES NO. MAY BE 172673 OR 43680.



LOCKING NUB IS LOCATED HERE



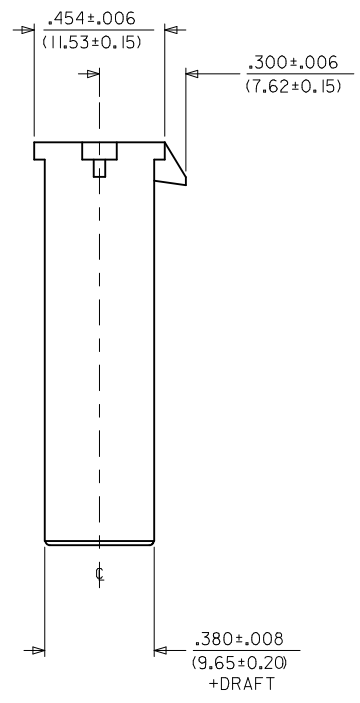
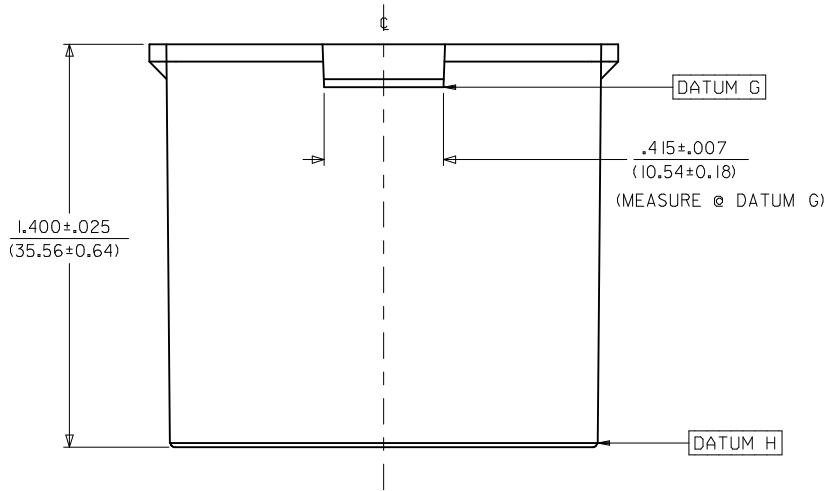
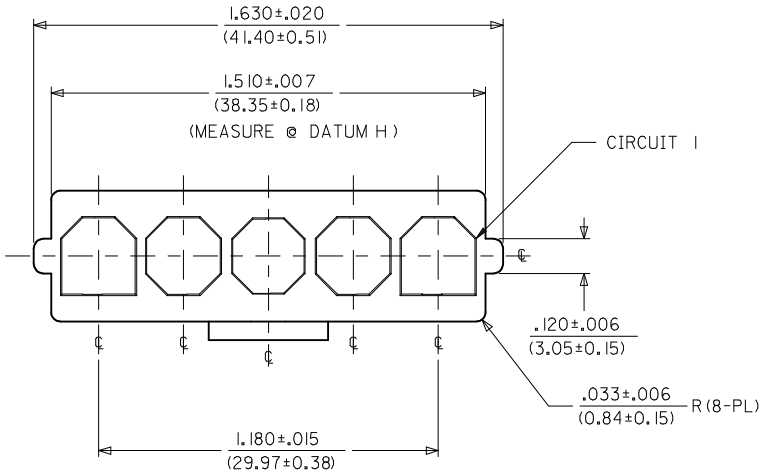
172673-*004
(NO SCALE)

| | | | | | | | |
|--|-----------------|--|-----------|---|--------------|---------------|-----------------------------|
| SEE SHEET 1 EC NO: UCP2015-2359 DRWN: JDFX 2014/12/09 CHKD: BANDERSON 2014/12/09 APPR: FSMITH 2015/01/09 | QUALITY SYMBOLS | GENERAL TOLERANCES (UNLESS SPECIFIED) | | DIMENSION STYLE | SCALE | DESIGN UNITS | THIRD ANGLE PROJECTION |
| | ▽=0 | mm | INCH | IN/MM | 3:1 | INCH | |
| | ▽=0 | 4 PLACES ± --- | ± --- | DRAWN BY | DATE | TITLE | SUPER-SABRE PLUG HOUSING |
| | ▽=0 | 3 PLACES ± --- | ± .010 | JDFOX | 2014/07/24 | CHECKED BY | |
| ▽=0 | 2 PLACES ± 0.25 | ± .014 | BANDERSON | 2014/07/24 | APPROVED BY | DATE | molex |
| ▽=0 | 1 PLACE ± 0.35 | ± --- | FSMITH | 2014/07/31 | MATERIAL NO. | DOCUMENT NO. | |
| REV | DESCRIPTION | ANGULAR ±1/2° | | SEE CHART | | SD-172673-001 | SHEET NO. |
| A2 | | DRAFT WHERE APPLICABLE MUST REMAIN WITHIN DIMENSIONS | | THIS DRAWING CONTAINS INFORMATION THAT IS PROPRIETARY TO MOLEX INCORPORATED AND SHOULD NOT BE USED WITHOUT WRITTEN PERMISSION | | | 3 OF 5 |

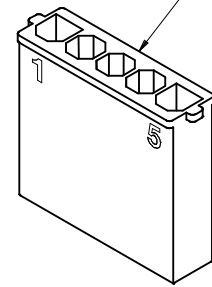
| ITEM NUMBER | MATERIAL | COLOR |
|-------------|--|-------|
| 172673-2005 | NYLON, UL94V-0 | BLACK |
| 172673-3005 | NYLON, UL94V-2, IEC 60335-1 GLOW-WIRE CAPABLE | BLACK |

NOTE:

1. MATERIAL: SEE CHART.
2. FINISH: NONE.
3. PRODUCT SPECIFICATION: PS-171825-001.
4. PACKAGING: PK-43680-001.
5. THIS CONNECTOR HOUSING FOR USE WITH 171826 TERMINALS.
6. THIS CONNECTOR HOUSING WILL MATE TO 172672 OR 44441 HOUSINGS.
7. PARTS CONFORM TO CLASS B REQUIREMENTS OF COSMETIC SPEC PS-45499-002.
- SOME PARTS MAY HAVE A BLEMISH NEAR THE GATE THAT DOES NOT AFFECT FUNCTIONALITY.
8. MOLDED IN SERIES NO. MAY BE 172673 OR 43680.



LOCKING NUB IS LOCATED HERE

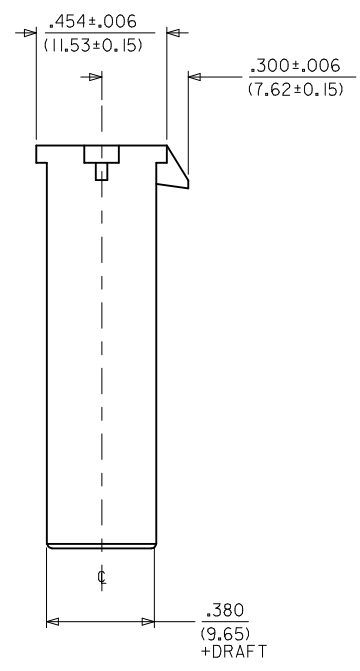
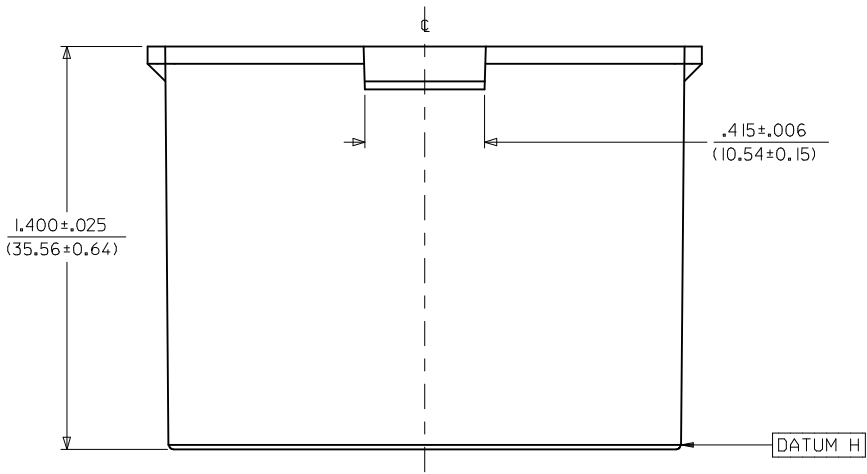
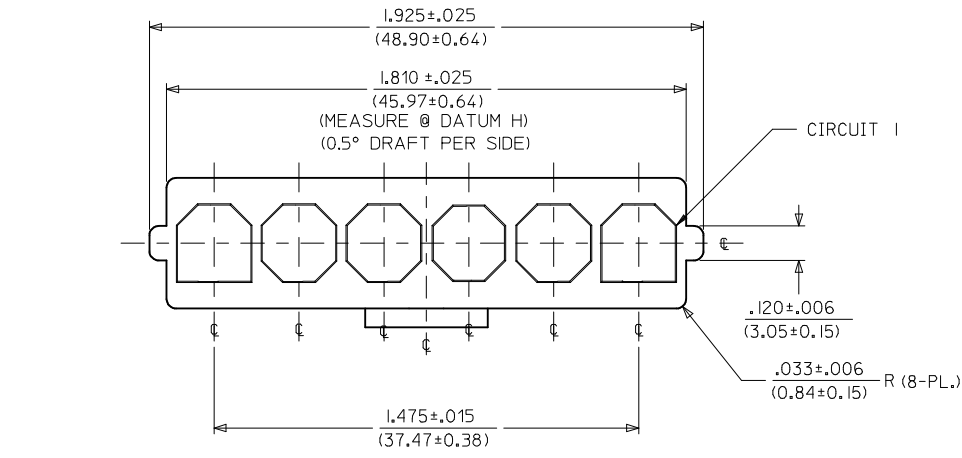


| | | | | | | |
|---|--|---------------------------------------|---|--------------------------|--------------|------------------------|
| SEE SHEET 1 IEC NO: UCP2015-2359 DRWN: JDFOX 2014/12/09 CHKD: BANDERSON 2014/12/09 APPR: FSMITH 2015/01/09 | QUALITY SYMBOLS | GENERAL TOLERANCES (UNLESS SPECIFIED) | DIMENSION STYLE | SCALE | DESIGN UNITS | THIRD ANGLE PROJECTION |
| | ▽=0 | mm INCH | IN/MM | 3:1 | INCH | |
| | ▽=0 | 4 PLACES ± --- ± --- | DRAWN BY DATE | TITLE | | |
| | ▽=0 | 3 PLACES ± --- ±.010 | JDFOX 2014/07/24 | SUPER-SABRE PLUG HOUSING | | |
| ▽=0 | 2 PLACES ± 0.25 ±.014 | CHECKED BY DATE | molex | | | |
| | 1 PLACE ± 0.35 ± --- | BANDERSON 2014/07/24 | SD-172673-001 | | | |
| | 0 PLACE ± --- ± --- | APPROVED BY DATE | SHEET NO. | | | |
| | ANGULAR ±1/2° | FSMITH 2014/07/31 | 4 OF 5 | | | |
| REV | DRAFT WHERE APPLICABLE MUST REMAIN WITHIN DIMENSIONS | MATERIAL NO. | DOCUMENT NO. | | | |
| A2 | | SEE CHART | | | | |
| | | SIZE C | THIS DRAWING CONTAINS INFORMATION THAT IS PROPRIETARY TO MOLEX INCORPORATED AND SHOULD NOT BE USED WITHOUT WRITTEN PERMISSION | | | |

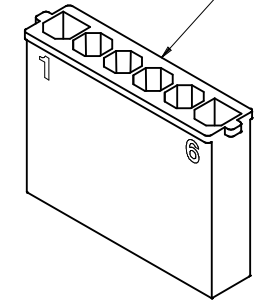
| ITEM NUMBER | MATERIAL | COLOR |
|-------------|--|-------|
| 172673-2006 | UL94V-0 NYLON | BLACK |
| 172673-3006 | UL94V-2 NYLON, IEC 60335-1 GLOW WIRE CAPABLE | BLACK |

NOTE:

1. MATERIAL: SEE CHART.
2. FINISH: NONE.
3. PRODUCT SPECIFICATION: PS-171825-001.
4. PACKAGING: PK-43680-001.
5. THIS CONNECTOR HOUSING FOR USE WITH 171826 TERMINALS.
6. THIS CONNECTOR HOUSING WILL MATE TO 172672 OR 44441 HOUSINGS.
7. PARTS CONFORM TO CLASS B REQUIREMENTS OF COSMETIC SPEC PS-45499-002.
- SOME PARTS MAY HAVE A BLEMISH NEAR THE GATE THAT DOES NOT AFFECT FUNCTIONALITY.
8. MOLDED IN SERIES NO. MAY BE 172673 OR 43680.



LOCKING NUB IS LOCATED HERE



172673-x006
(NO SCALE)

| REV | DESCRIPTION | QUALITY SYMBOLS | GENERAL TOLERANCES (UNLESS SPECIFIED) | | DIMENSION STYLE | SCALE | DESIGN UNITS | THIRD ANGLE PROJECTION | |
|---|---|-------------------|--|---|---|--------------------------------------|---------------------------|-------------------------------|---------------------|
| | | | mm | INCH | IN/MM | 3:1 | INCH | | |
| A2 | SEE SHEET 1 EC NO: UCP2015-2359 DRWN: JDFOX 2014/12/09 CHKD: BANDERSON 2014/12/09 APPR: FSMITH 2015/01/09 | ▽=0 ▽=0 ▽=0 | 4 PLACES ± --- ± --- 3 PLACES ± --- ± .010 2 PLACES ± 0.25 ± .014 1 PLACE ± 0.35 ± --- 0 PLACE ± --- ± --- | ANGULAR ±1/2° DRAFT WHERE APPLICABLE MUST REMAIN WITHIN DIMENSIONS | DRAWN BY DATE JDFOX 2014/07/24 CHECKED BY DATE BANDERSON 2014/07/24 APPROVED BY DATE FSMITH 2014/07/31 | TITLE SUPER-SABRE PLUG HOUSING | MATERIAL NO. SEE CHART | DOCUMENT NO. SD-172673-001 | SHEET NO. 5 OF 5 |
| THIS DRAWING CONTAINS INFORMATION THAT IS PROPRIETARY TO MOLEX INCORPORATED AND SHOULD NOT BE USED WITHOUT WRITTEN PERMISSION | | | | | | | | | |