



Chipsmall Limited consists of a professional team with an average of over 10 year of expertise in the distribution of electronic components. Based in Hongkong, we have already established firm and mutual-benefit business relationships with customers from,Europe,America and south Asia,supplying obsolete and hard-to-find components to meet their specific needs.

With the principle of “Quality Parts,Customers Priority,Honest Operation,and Considerate Service”,our business mainly focus on the distribution of electronic components. Line cards we deal with include Microchip,ALPS,ROHM,Xilinx,Pulse,ON,Everlight and Freescale. Main products comprise IC,Modules,Potentiometer,IC Socket,Relay,Connector.Our parts cover such applications as commercial,industrial, and automotives areas.

We are looking forward to setting up business relationship with you and hope to provide you with the best service and solution. Let us make a better world for our industry!



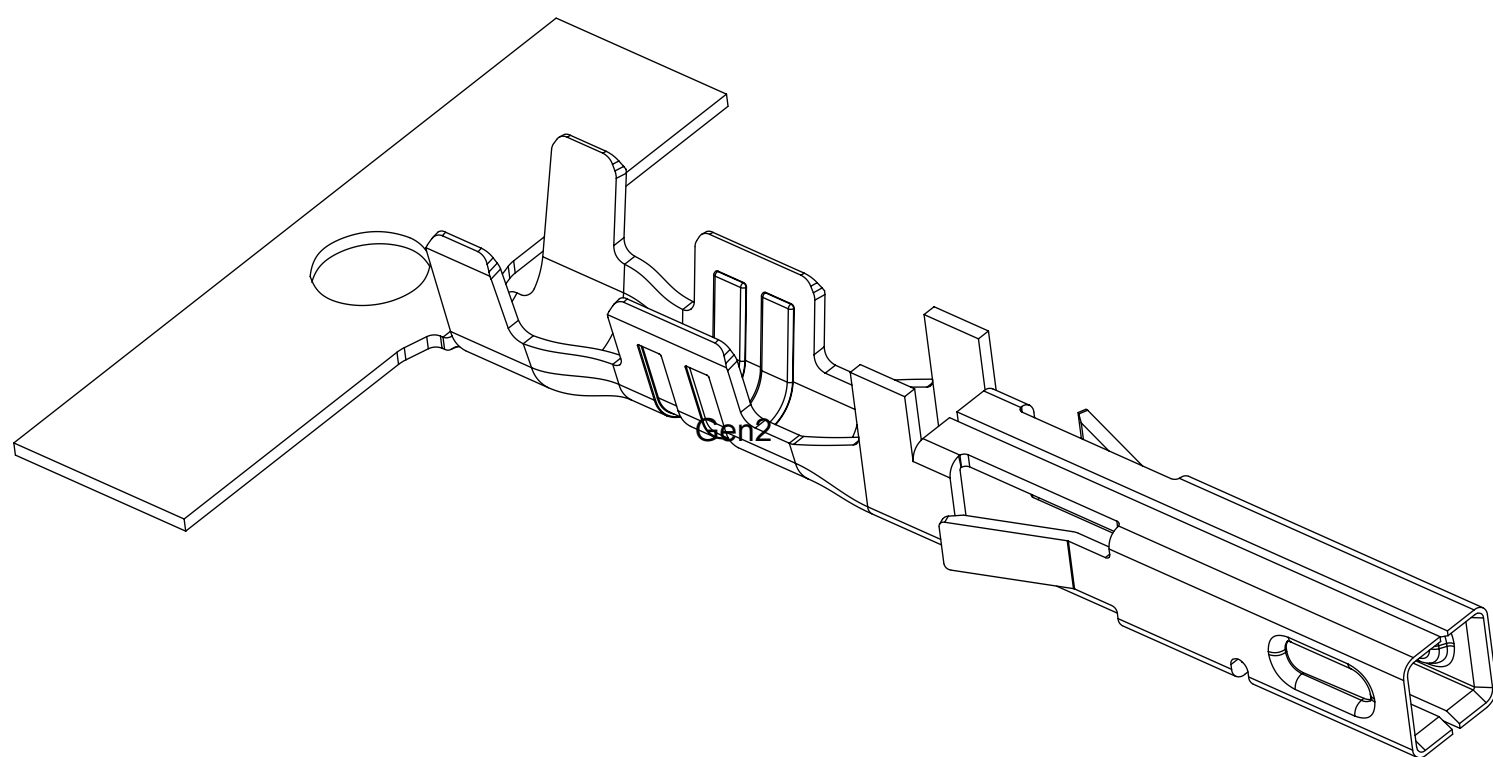
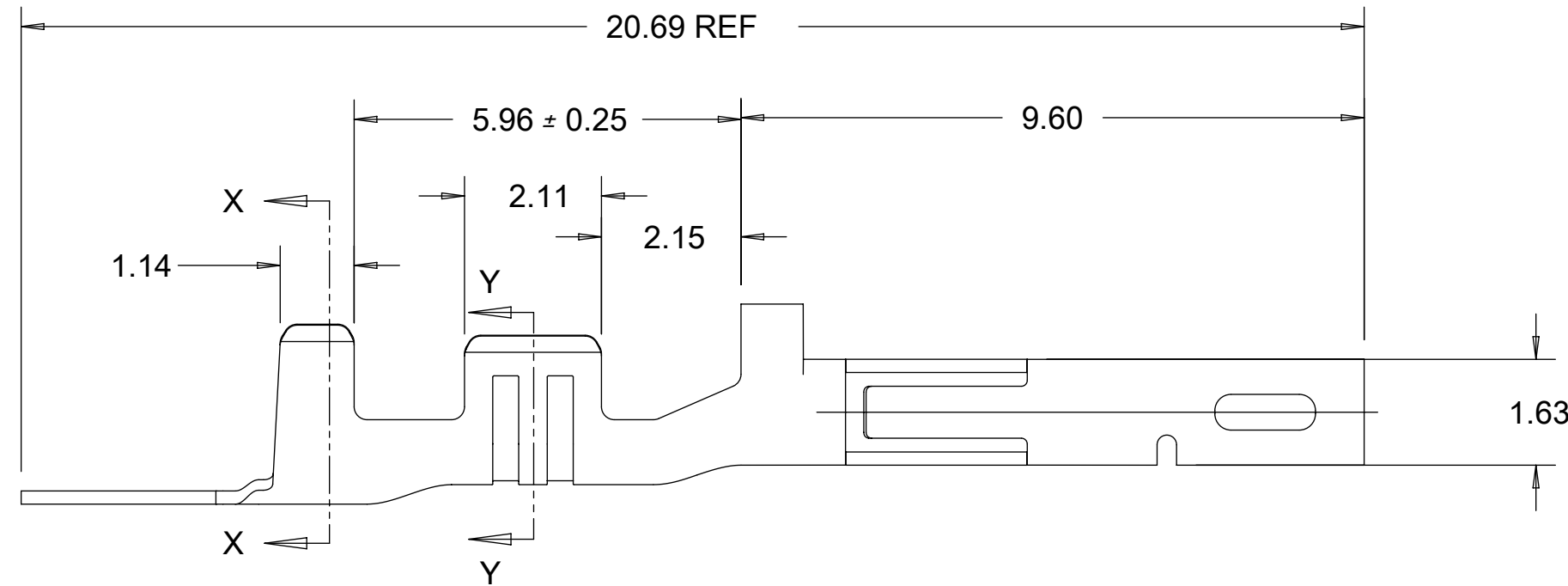
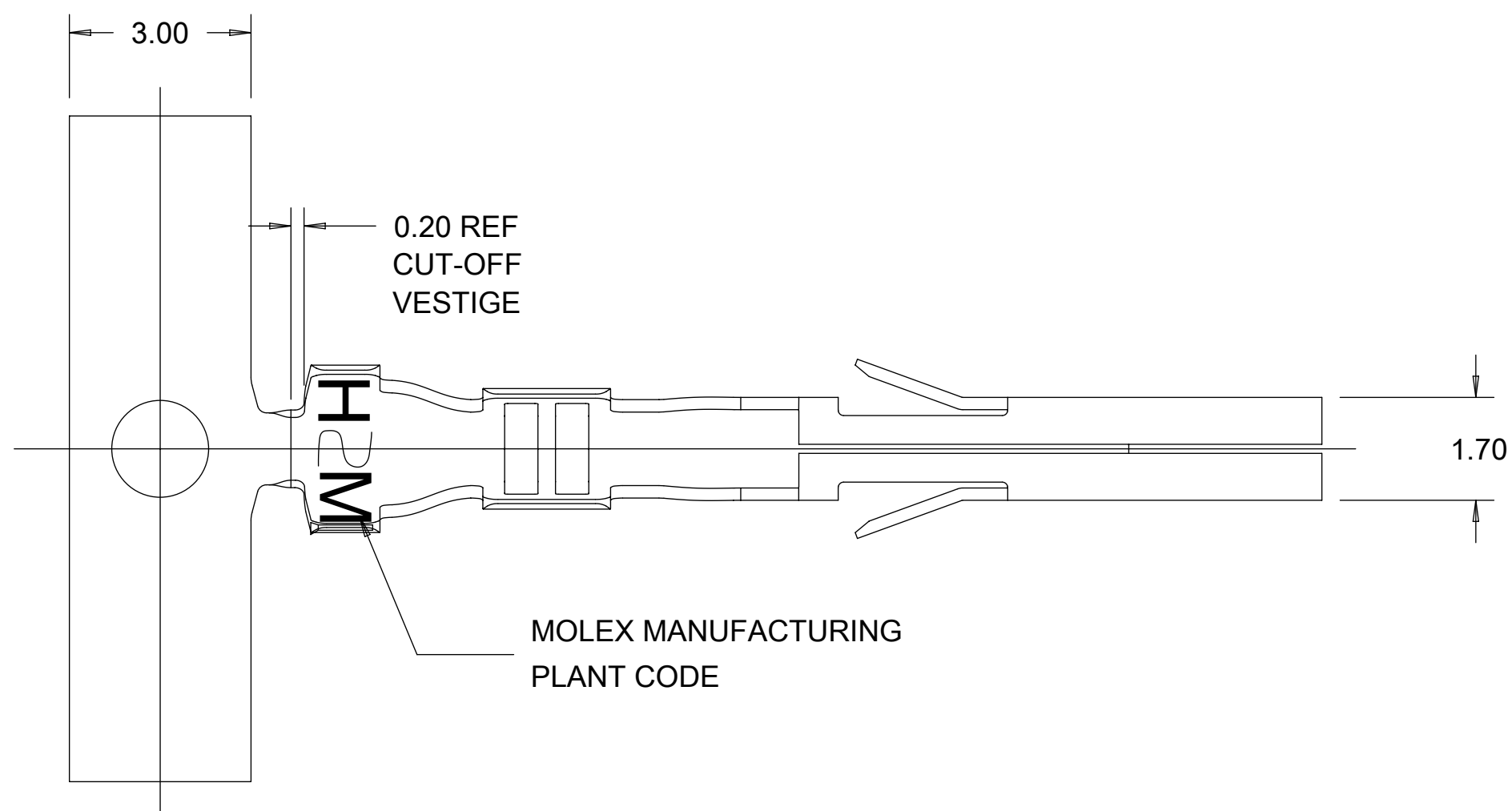
Contact us

Tel: +86-755-8981 8866 Fax: +86-755-8427 6832

Email & Skype: info@chipsmall.com Web: www.chipsmall.com

Address: A1208, Overseas Decoration Building, #122 Zhenhua RD., Futian, Shenzhen, China

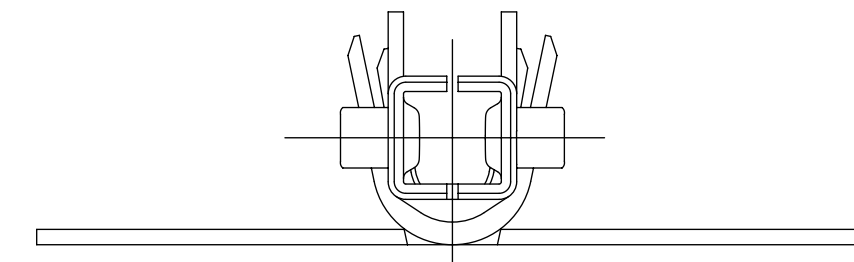




PART LEGEND

172718- * * * *

SERIES	FORM
1 = 16 (Ø1.98-2.55)	1 = CHAIN
2 = 16 (Ø2.55-3.14)	2 = LOOSE
3 = 18-20 (Ø1.42-2.10)	
4 = 18-20 (Ø2.10-2.85)	MATERIAL
5 = 22-24 (Ø1.07-1.65)	1 = PHOS BRONZE
6 = 22-24 (Ø1.65-2.38)	2 = BRASS
	PLATING
	1 = HOT TIN DIP (PRE-PLATE)

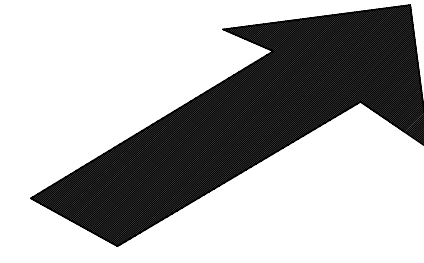


NOTES:

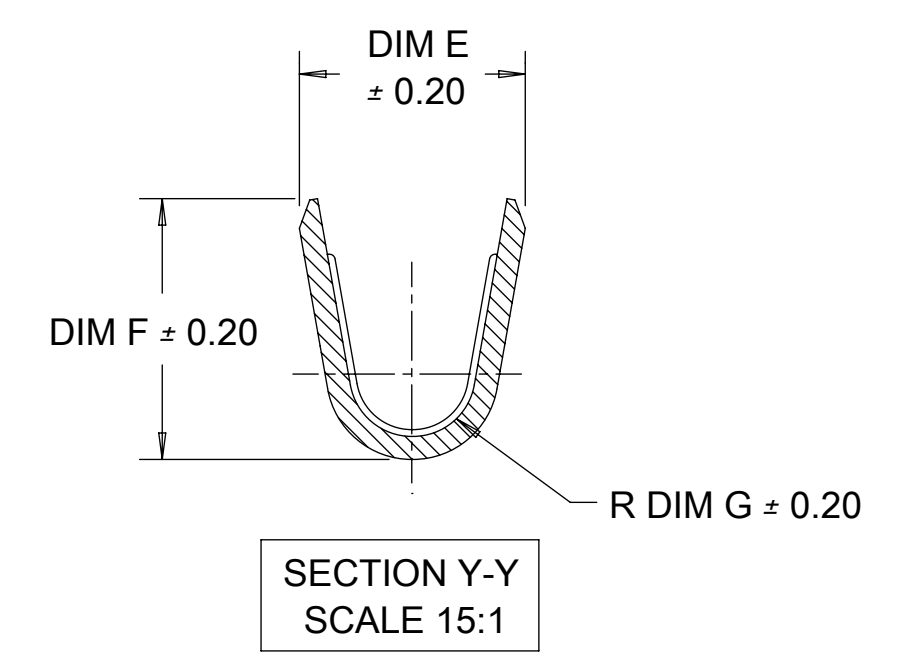
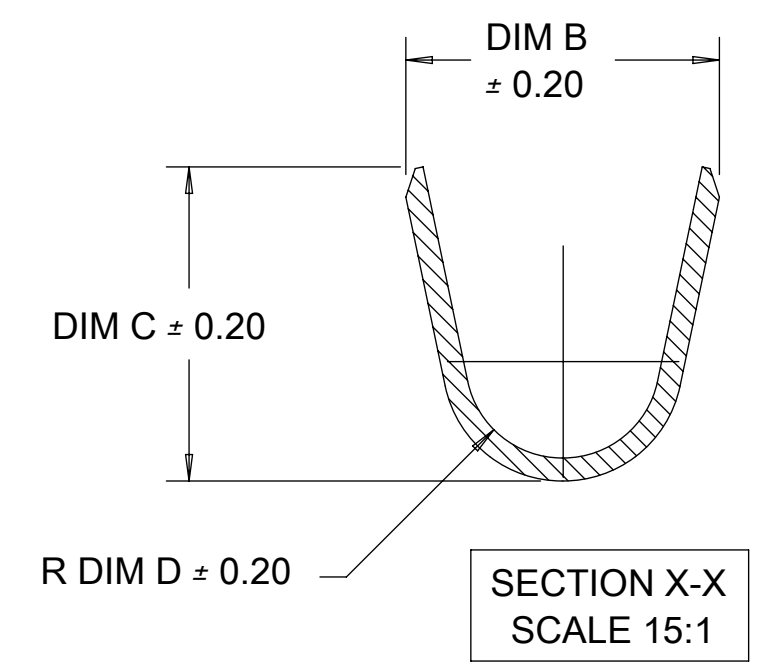
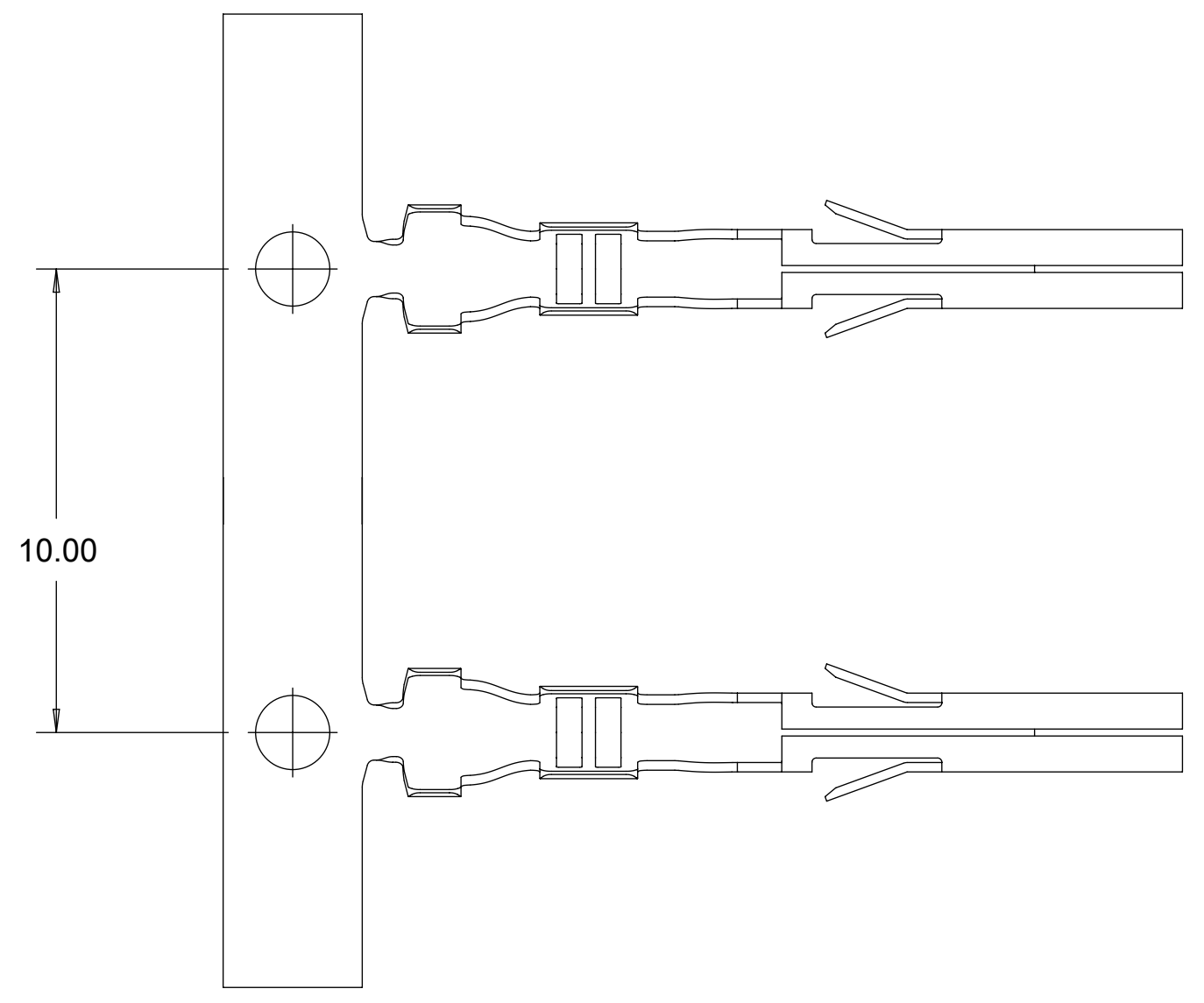
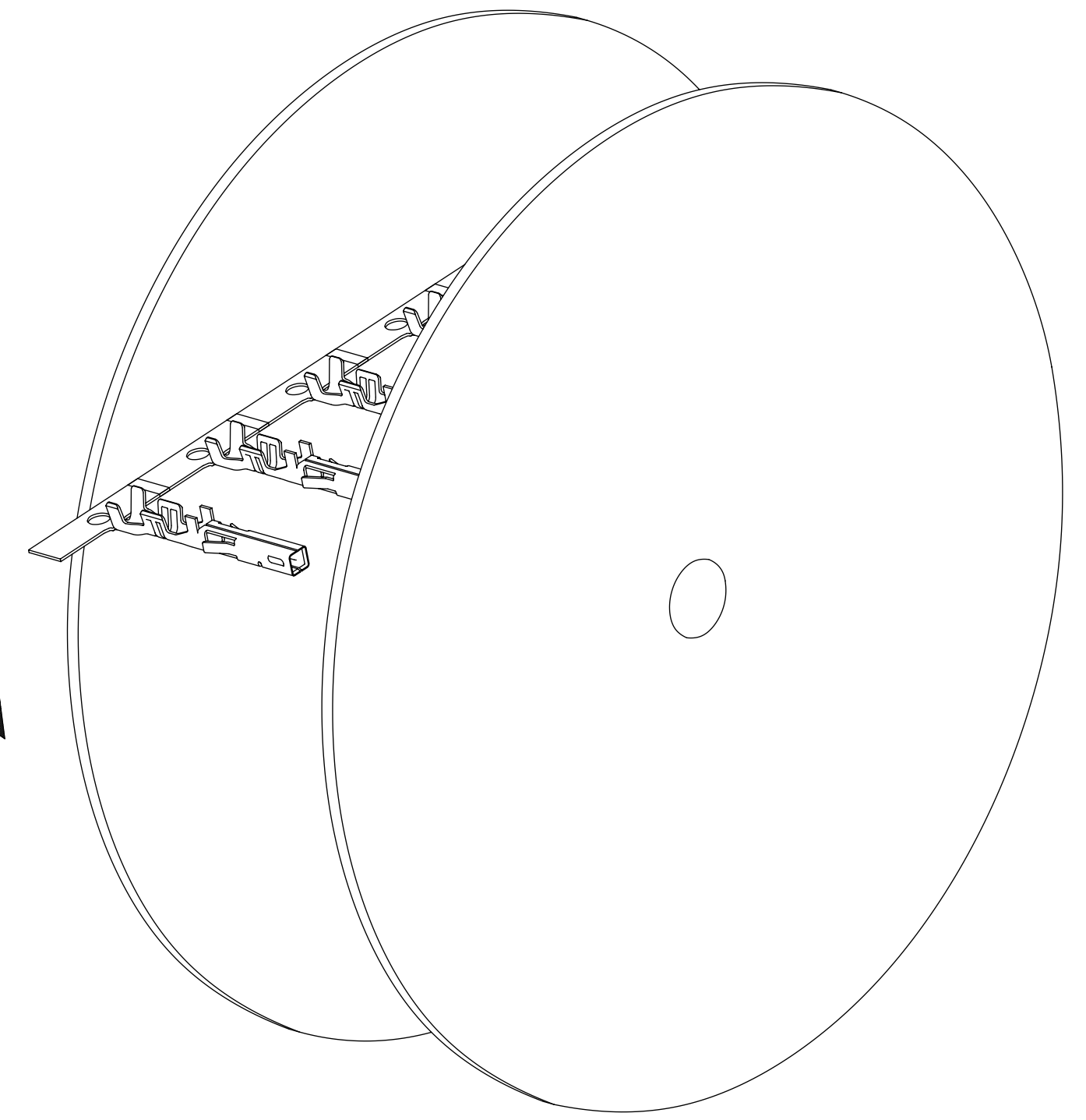
1. MATERIALS:
PHOS BRONZE ALLOY
BRASS ALLOY
2. PRE-PLATED: HOT TIN DIP, OVERALL 2.5 m MIN. TIN.
3. PRODUCT SPECIFICATION: PS-172718-0000
APPLICATION SPECIFICATION: AS-172718-0000
4. THIS TERMINAL TO BE USED WITH HOUSING SERIES 172708.
5. THIS TERMINAL MATES WITH MALE CRIMP TERMINAL SERIES 5558, 46012 & 172765.
6. THIS TERMINAL MATES WITH HEADER SERIES 5566 & 5569.
7. PACKAGING: REELS TO BE PACKED PER PK-172718-0000
LOOSE TERMINALS PER PK-172718-0001.
8. PART CONFORMS TO CLASS 'B' REQUIREMENTS OF COSMETIC SPEC PS-45499-002.
9. WHEN TERMINALS ARE INSTALLED IN THE HOUSING THE WIRE ARE TO BE DRESSED IN SUCH A MANNER TO ALLOW THE TERMINALS TO FLOAT FREELY IN THE HOUSING POCKET.
10. THIS TERMINALS IS DESIGNED FOR SINGLE WIRE CRIMPING.

THIS DRAWING CONTAINS INFORMATION THAT IS PROPRIETARY TO MOLEX INCORPORATED AND SHOULD NOT BE USED WITHOUT WRITTEN PERMISSION											
EC DESCRIPTION EC NO: 108191 DRWN: TREGORI CHKD: REV / APPR: RHODGE	GENERAL TOLERANCES (UNLESS SPECIFIED)		DIMENSION UNITS	SCALE							
	ANGULAR TOL ± °		MM	10:1							
	4 PLACES ±	DRWN BY		DATE	CRIMP TERMINAL RECEPTACLE MINI-FIT TPA2						
	3 PLACES ±	TREGORI		2014/09/09							
	2 PLACES ± 0.10	CHKD BY		DATE	PRODUCT CUSTOMER DRAWING						
1 PLACE ± 0.2	APPR BY		DATE								
0 PLACES ±	RHODGE		2014/12/04	SERIES	MATERIAL NUMBER	CUSTOMER					
DRAFT WHERE APPLICABLE MUST REMAIN WITHIN DIMENSIONS	DRAWING SIZE	THIRD ANGLE PROJECTION	C	172718	SEE TABLE SHEET 2	GENERAL MARKET					
				DOCUMENT NUMBER	SD-172718-0000	DOC TYPE	PSD	DOC PART	000	SHEET NUMBER	1 OF 2

	MOLEX PART NUMBER	BASE MAT'L	WIRE AWG	WIRE OD RANGE	DIM B	DIM C	DIM D	DIM E	DIM F	DIM G
CHAIN	172718-1111	PHOS BRONZE	16	1.98-2.55	3.27	3.43	1.00	2.35	2.90	0.70
	172718-2111			2.55-3.14	3.74	3.66	1.43			
	172718-3111		18-20	1.42-2.10	2.77	2.77	0.85	2.00	2.30	0.55
	172718-4111			2.10-2.85	3.36	3.37	1.25			
	172718-5111		22-24	1.07-1.65	2.33	2.27	0.70	1.68	1.65	0.40
	172718-6111			1.65-2.38	3.14	3.09	1.00			
G	172718-1121	BRASS	16	1.98-2.55	3.27	3.43	1.00	2.35	2.90	0.70
	172718-2121			2.55-3.14	3.74	3.66	1.43			
	172718-3121		18-20	1.42-2.10	2.77	2.77	0.85	2.00	2.30	0.55
	172718-4121			2.10-2.85	3.36	3.37	1.25			
	172718-5121		22-24	1.07-1.65	2.33	2.27	0.70	1.68	1.65	0.40
	172718-6121			1.65-2.38	3.14	3.09	1.00			
F	172718-1112	PHOS BRONZE	16	1.98-2.55	3.27	3.43	1.00	2.35	2.90	0.70
	172718-2112			2.55-3.14	3.74	3.66	1.43			
	172718-3112		18-20	1.42-2.10	2.77	2.77	0.85	2.00	2.30	0.55
	172718-4112			2.10-2.85	3.36	3.37	1.25			
	172718-5112		22-24	1.07-1.65	2.33	2.27	0.70	1.68	1.65	0.40
	172718-6112			1.65-2.38	3.14	3.09	1.00			
E	172718-1122	BRASS	16	1.98-2.55	3.27	3.43	1.00	2.35	2.90	0.70
	172718-2122			2.55-3.14	3.74	3.66	1.43			
	172718-3122		18-20	1.42-2.10	2.77	2.77	0.85	2.00	2.30	0.55
	172718-4122			2.10-2.85	3.36	3.37	1.25			
	172718-5122		22-24	1.07-1.65	2.33	2.27	0.70	1.68	1.65	0.40
	172718-6122			1.65-2.38	3.14	3.09	1.00			



REELING DIRECTION



THIS DRAWING CONTAINS INFORMATION THAT IS PROPRIETARY TO MOLEX INCORPORATED AND SHOULD NOT BE USED WITHOUT WRITTEN PERMISSION											
EC DESCRIPTION EC NO: 108191 DRWN: TGREGORI CHKD: RHODGE APP: RHODGE	GENERAL TOLERANCES (UNLESS SPECIFIED)				DIMENSION UNITS	SCALE	molex				
	ANGULAR TOL ± °				MM	7:1					
	4 PLACES ±	TGREGORI			DATE	2014/09/09					
	3 PLACES ±	CHKD BY			DATE						
	2 PLACES ± 0.10	APPR BY			DATE	RHODGE 2014/12/04					
	1 PLACE ± 0.2	DRAWING SIZE			THIRD ANGLE PROJECTION						
0 PLACES ±	DRAFT WHERE APPLICABLE MUST REMAIN WITHIN DIMENSIONS			C							
RELEASE STATUS		P1	RELEASE DATE		26.09.2016	14:50:10					
12	11	10	9	8	7	6	5	4	3	2	1

CRIMP TERMINAL RECEPTACLE MINI-FIT TPA2

PRODUCT CUSTOMER DRAWING

SERIES MATERIAL NUMBER CUSTOMER
172718 SEE TABLE GENERAL MARKET

DOCUMENT NUMBER DOC TYPE DOC PART SHEET NUMBER
SD-172718-0000 PSD 000 2 OF 2