



Chipsmall Limited consists of a professional team with an average of over 10 year of expertise in the distribution of electronic components. Based in Hongkong, we have already established firm and mutual-benefit business relationships with customers from,Europe,America and south Asia,supplying obsolete and hard-to-find components to meet their specific needs.

With the principle of "Quality Parts,Customers Priority,Honest Operation,and Considerate Service",our business mainly focus on the distribution of electronic components. Line cards we deal with include Microchip,ALPS,ROHM,Xilinx,Pulse,ON,Everlight and Freescale. Main products comprise IC,Modules,Potentiometer,IC Socket,Relay,Connector.Our parts cover such applications as commercial,industrial, and automotives areas.

We are looking forward to setting up business relationship with you and hope to provide you with the best service and solution. Let us make a better world for our industry!



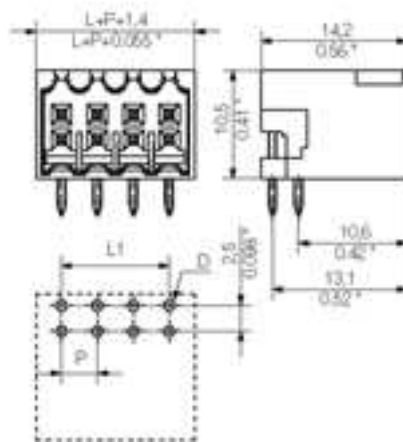
Contact us

Tel: +86-755-8981 8866 Fax: +86-755-8427 6832

Email & Skype: info@chipsmall.com Web: www.chipsmall.com

Address: A1208, Overseas Decoration Building, #122 Zhenhua RD., Futian, Shenzhen, China





General ordering data

Order No.	1728060000
Part designation	S2L 3.5/20/90G 3.5SN SW
Version	PCB plug-in connector, Male connectors, Soldered connection, Pitch: 3.5 mm, No. of poles: 20, 90°, Box
EAN	4032248039555
Qty.	20 pc(s).

System parameters

Fitted to PCB	Soldered connection
Outgoing elbow	90°
Pitch	3.5 mm
Pitch in inch	0.138 inch
No. of poles	20
Solder pin length	3.5 mm
Can be coded	Yes
No. of rows	2
No. of solder pins per pole	1
Dia. of fitting hole	1.3 mm
Fitting hole tolerance	+ 0.1 mm
L1 in mm	31.5 mm
L1 in inch	1.24 inch
Electric shock protection to DIN VDE 0470	IP 10
Electric shock protection to DIN VDE 0470	Safe from back-of-hand touch

Material data

Insulating material	PBT
Colour	black
colour chart	Similar to RAL 9011
Insulating material group	IIIa
Flammability class UL 94	V-0
CTI	>= 200
Contact base material	Copper alloy
Contact surface	tinned

Material data

Constant operating temp., min.	-25 °C
Constant operating temp., max.	100
Storage temperature, min.	-25 °C
Storage temperature, max.	55 °C
Max. relative humidity during storage	93 %

DIN IEC rating data

Rated current, min. No. pins (Tu=20°C)	10 A
Rated current, max. No. pins (Tu=20°C)	10 A
Rated current, min. No. pins (Tu=40°C)	9 A
Rated current, max. No. pins (Tu=40°C)	8.5 A
Rated voltage for overvoltage class/pollution severity III/3	80 V
Rated impulse withstand voltage for overvoltage class/pollution severity III/3	2.5 kV
Rated voltage for overvoltage class/pollution severity III/2	125 V
Rated impulse withstand voltage for overvoltage class/pollution severity III/2	2.5 kV
Rated voltage for overvoltage class/pollution severity II/2	250 V
Rated impulse withstand voltage for overvoltage class/pollution severity II/2	2.5 kV
Short-time withstand current resistance	3 x 1s with 77 A

CSA rating data

Rated voltage (Use group D)	50 V
Rated current (Use group D)	5 A

UL 1059 rating data

Rated voltage (Use group D)	150 V
Rated current (Use group D)	7 A

Approvals

Approvals institutes



Downloads

CAD Library (P-CAD Format - Standard)	S2L-SMT.LIB
---------------------------------------	-------------

Classifications

ETIM 2.0	NK
ETIM 3.0	EC001284
eClass 4.1	27-26-07-01
eClass 5.0	27-26-07-01
eClass 5.1	27-26-07-01

Similar products

Order No.	Part designation	Version
1727830000	S2L 3.5/6/90G 3.5SN OR	PCB plug-in connector, Male connectors, Soldered connection, Pitch: 3.50 mm, No. of poles: 6, 90°, Box
1727990000	S2L 3.5/6/90G 3.5SN SW	PCB plug-in connector, Male connectors, Soldered connection, Pitch: 3.50 mm, No. of poles: 6, 90°, Box
1755360000	S2L 3.5/6/90G 3.5AU OR	PCB plug-in connector, Male connectors, Soldered connection, Pitch: 3.50 mm, No. of poles: 6, 90°, Box
1755520000	S2L 3.5/6/90G 3.5AU SW	PCB plug-in connector, Male connectors, Soldered connection, Pitch: 3.50 mm, No. of poles: 6, 90°, Box
1727840000	S2L 3.5/8/90G 3.5SN OR	PCB plug-in connector, Male connectors, Soldered connection, Pitch: 3.50 mm, No. of poles: 8, 90°, Box
1728000000	S2L 3.5/8/90G 3.5SN SW	PCB plug-in connector, Male connectors, Soldered connection, Pitch: 3.50 mm, No. of poles: 8, 90°, Box
1755370000	S2L 3.5/8/90G 3.5AU OR	PCB plug-in connector, Male connectors, Soldered connection, Pitch: 3.50 mm, No. of poles: 8, 90°, Box
1727850000	S2L 3.5/10/90G 3.5SN OR	PCB plug-in connector, Male connectors, Soldered connection, Pitch: 3.50 mm, No. of poles: 10, 90°, Box
1728010000	S2L 3.5/10/90G 3.5SN SW	PCB plug-in connector, Male connectors, Soldered connection, Pitch: 3.50 mm, No. of poles: 10, 90°, Box
1727860000	S2L 3.5/12/90G 3.5SN OR	PCB plug-in connector, Male connectors, Soldered connection, Pitch: 3.50 mm, No. of poles: 12, 90°, Box
1728020000	S2L 3.5/12/90G 3.5SN SW	PCB plug-in connector, Male connectors, Soldered connection, Pitch: 3.50 mm, No. of poles: 12, 90°, Box
1755390000	S2L 3.5/12/90G 3.5AU OR	PCB plug-in connector, Male connectors, Soldered connection, Pitch: 3.50 mm, No. of poles: 12, 90°, Box
1727870000	S2L 3.5/14/90G 3.5SN OR	PCB plug-in connector, Male connectors, Soldered connection, Pitch: 3.50 mm, No. of poles: 14, 90°, Box
1728030000	S2L 3.5/14/90G 3.5SN SW	PCB plug-in connector, Male connectors, Soldered connection, Pitch: 3.50 mm, No. of poles: 14, 90°, Box
1755400000	S2L 3.5/14/90G 3.5AU OR	PCB plug-in connector, Male connectors, Soldered connection, Pitch: 3.50 mm, No. of poles: 14, 90°, Box
1755560000	S2L 3.5/14/90G 3.5AU SW	PCB plug-in connector, Male connectors, Soldered connection, Pitch: 3.50 mm, No. of poles: 14, 90°, Box
1727880000	S2L 3.5/16/90G 3.5SN OR	PCB plug-in connector, Male connectors, Soldered connection, Pitch: 3.50 mm, No. of poles: 16, 90°, Box
1728040000	S2L 3.5/16/90G 3.5SN SW	PCB plug-in connector, Male connectors, Soldered connection, Pitch: 3.50 mm, No. of poles: 16, 90°, Box
1755410000	S2L 3.5/16/90G 3.5AU OR	PCB plug-in connector, Male connectors, Soldered connection, Pitch: 3.50 mm, No. of poles: 16, 90°, Box
1755570000	S2L 3.5/16/90G 3.5AU SW	PCB plug-in connector, Male connectors, Soldered connection, Pitch: 3.50 mm, No. of poles: 16, 90°, Box
1727890000	S2L 3.5/18/90G 3.5SN OR	PCB plug-in connector, Male connectors, Soldered connection, Pitch: 3.50 mm, No. of poles: 18, 90°, Box
1728050000	S2L 3.5/18/90G 3.5SN SW	PCB plug-in connector, Male connectors, Soldered connection, Pitch: 3.50 mm, No. of poles: 18, 90°, Box
1755420000	S2L 3.5/18/90G 3.5AU OR	PCB plug-in connector, Male connectors, Soldered connection, Pitch: 3.50 mm, No. of poles: 18, 90°, Box
1727900000	S2L 3.5/20/90G 3.5SN OR	PCB plug-in connector, Male connectors, Soldered connection, Pitch: 3.50 mm, No. of poles: 20, 90°, Box

1755430000	S2L 3.5/20/90G 3.5AU OR	PCB plug-in connector, Male connectors, Soldered connection, Pitch: 3.50 mm, No. of poles: 20, 90°, Box
1727910000	S2L 3.5/22/90G 3.5SN OR	PCB plug-in connector, Male connectors, Soldered connection, Pitch: 3.50 mm, No. of poles: 22, 90°, Box
1727920000	S2L 3.5/24/90G 3.5SN OR	PCB plug-in connector, Male connectors, Soldered connection, Pitch: 3.50 mm, No. of poles: 24, 90°, Box
1728080000	S2L 3.5/24/90G 3.5SN SW	PCB plug-in connector, Male connectors, Soldered connection, Pitch: 3.50 mm, No. of poles: 24, 90°, Box
1727930000	S2L 3.5/26/90G 3.5SN OR	PCB plug-in connector, Male connectors, Soldered connection, Pitch: 3.50 mm, No. of poles: 26, 90°, Box
1728090000	S2L 3.5/26/90G 3.5SN SW	PCB plug-in connector, Male connectors, Soldered connection, Pitch: 3.50 mm, No. of poles: 26, 90°, Box
1755620000	S2L 3.5/26/90G 3.5AU SW	PCB plug-in connector, Male connectors, Soldered connection, Pitch: 3.50 mm, No. of poles: 26, 90°, Box
1727940000	S2L 3.5/28/90G 3.5SN OR	PCB plug-in connector, Male connectors, Soldered connection, Pitch: 3.50 mm, No. of poles: 28, 90°, Box
1728100000	S2L 3.5/28/90G 3.5SN SW	PCB plug-in connector, Male connectors, Soldered connection, Pitch: 3.50 mm, No. of poles: 28, 90°, Box
1727950000	S2L 3.5/30/90G 3.5SN OR	PCB plug-in connector, Male connectors, Soldered connection, Pitch: 3.50 mm, No. of poles: 30, 90°, Box
1728110000	S2L 3.5/30/90G 3.5SN SW	PCB plug-in connector, Male connectors, Soldered connection, Pitch: 3.50 mm, No. of poles: 30, 90°, Box
1755480000	S2L 3.5/30/90G 3.5AU OR	PCB plug-in connector, Male connectors, Soldered connection, Pitch: 3.50 mm, No. of poles: 30, 90°, Box
1727960000	S2L 3.5/32/90G 3.5SN OR	PCB plug-in connector, Male connectors, Soldered connection, Pitch: 3.50 mm, No. of poles: 32, 90°, Box
1728120000	S2L 3.5/32/90G 3.5SN SW	PCB plug-in connector, Male connectors, Soldered connection, Pitch: 3.50 mm, No. of poles: 32, 90°, Box
1755490000	S2L 3.5/32/90G 3.5AU OR	PCB plug-in connector, Male connectors, Soldered connection, Pitch: 3.50 mm, No. of poles: 32, 90°, Box
1727970000	S2L 3.5/34/90G 3.5SN OR	PCB plug-in connector, Male connectors, Soldered connection, Pitch: 3.50 mm, No. of poles: 34, 90°, Box
1727980000	S2L 3.5/36/90G 3.5SN OR	PCB plug-in connector, Male connectors, Soldered connection, Pitch: 3.50 mm, No. of poles: 36, 90°, Box