



Chipsmall Limited consists of a professional team with an average of over 10 year of expertise in the distribution of electronic components. Based in Hongkong, we have already established firm and mutual-benefit business relationships with customers from,Europe,America and south Asia,supplying obsolete and hard-to-find components to meet their specific needs.

With the principle of “Quality Parts,Customers Priority,Honest Operation,and Considerate Service”,our business mainly focus on the distribution of electronic components. Line cards we deal with include Microchip,ALPS,ROHM,Xilinx,Pulse,ON,Everlight and Freescale. Main products comprise IC,Modules,Potentiometer,IC Socket,Relay,Connector.Our parts cover such applications as commercial,industrial, and automotives areas.

We are looking forward to setting up business relationship with you and hope to provide you with the best service and solution. Let us make a better world for our industry!



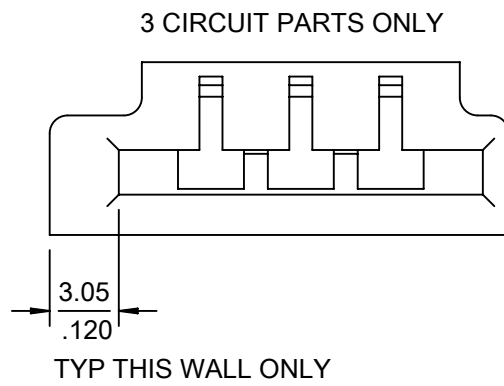
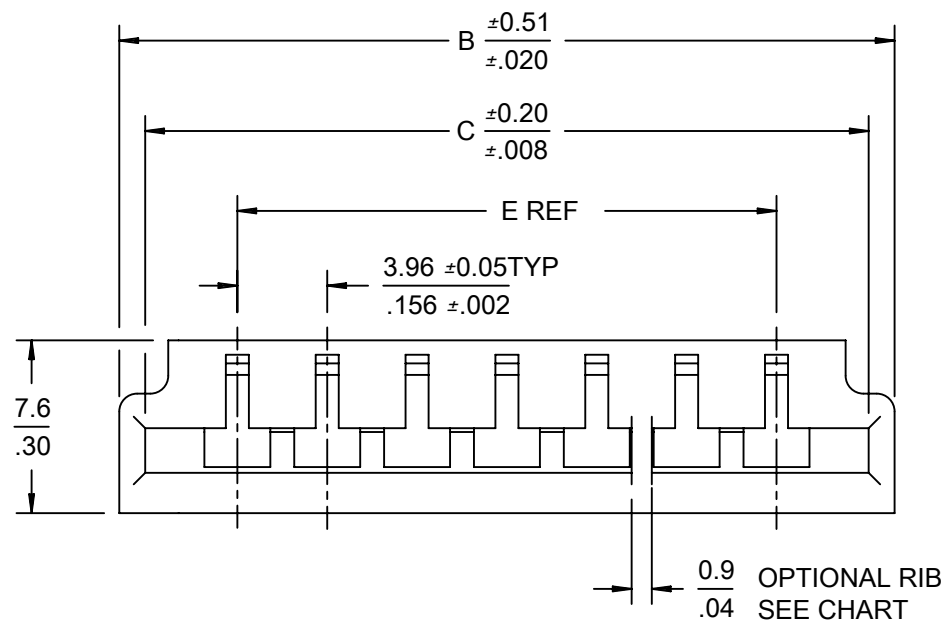
Contact us

Tel: +86-755-8981 8866 Fax: +86-755-8427 6832

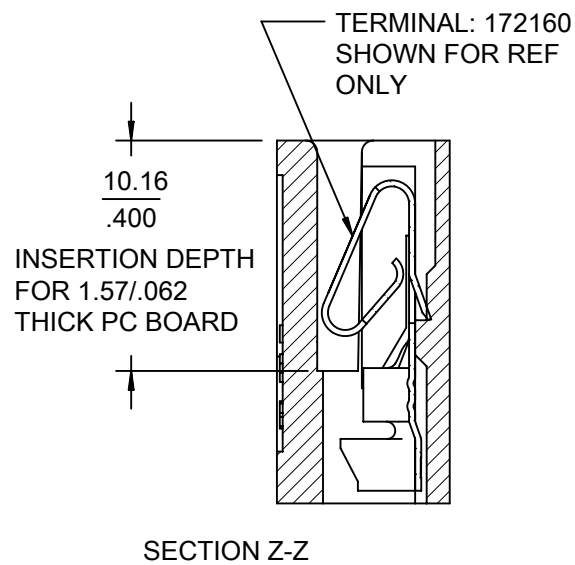
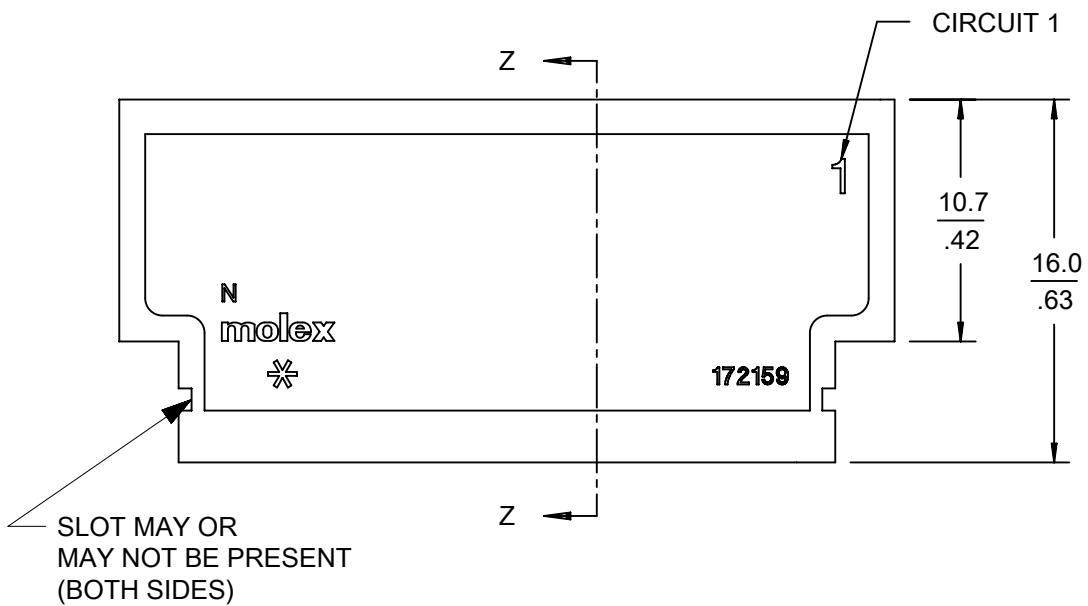
Email & Skype: info@chipsmall.com Web: www.chipsmall.com

Address: A1208, Overseas Decoration Building, #122 Zhenhua RD., Futian, Shenzhen, China

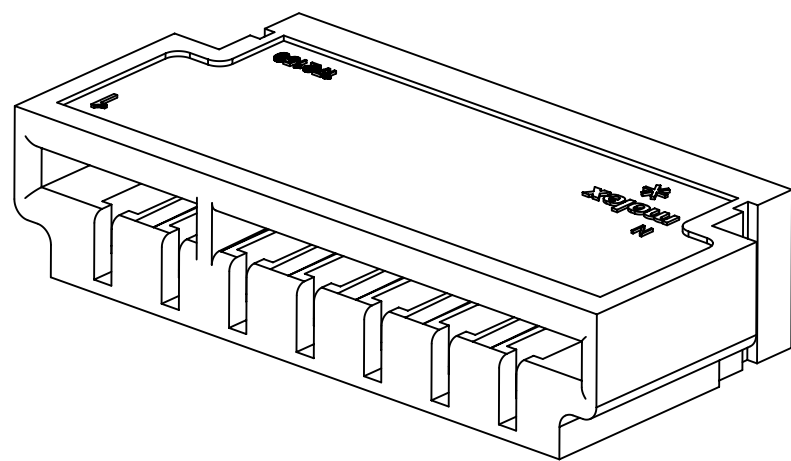




- NOTES:
1. MATERIAL: NYLON 6, 94V-2, GLOW WIRE CAPABLE PER IEC 60335-1, COLOR: BLACK
 2. FINISH: N/A
 3. PRODUCT SPECIFICATION: PS-172160-0001
 4. PACKAGING SPECIFICATION: PK-172159-0001
 5. COSMETIC SPECIFICATION: PS-45499-002 CLASS B
 6. HOUSING ACCEPTS TERMINAL: 172160
 7. DIMENSION TO BE 2.54-2.79 / .100-.110 TO POLARIZE HOUSING AND PCB.



CKTS	MATERIAL NO	POL RIB	DIM A	DIM B	DIM C	DIM E
03	172879-0003	N/A	$\frac{15.71}{.619}$	$\frac{20.24}{.797}$	$\frac{16.07}{.633}$	$\frac{7.92}{.312}$
04	172879-0004	N/A	$\frac{19.71}{.776}$	$\frac{22.30}{.878}$	$\frac{20.06}{.790}$	$\frac{11.89}{.468}$
05	172879-0205	2-3	$\frac{23.50}{.925}$	$\frac{26.26}{1.034}$	$\frac{24.06}{.947}$	$\frac{15.85}{.624}$
06	172879-0206	2-3	$\frac{27.49}{1.082}$	$\frac{30.23}{1.190}$	$\frac{28.05}{1.104}$	$\frac{19.81}{.780}$
07	172879-0207	2-3	$\frac{31.43}{1.238}$	$\frac{34.19}{1.346}$	$\frac{32.04}{1.262}$	$\frac{23.77}{.936}$
08	172879-0208	3-4	$\frac{35.43}{1.395}$	$\frac{38.15}{1.502}$	$\frac{36.03}{1.419}$	$\frac{27.74}{1.092}$
09	172879-0209	3-4, 7-8	$\frac{39.42}{1.552}$	$\frac{42.11}{1.658}$	$\frac{40.03}{1.576}$	$\frac{31.70}{1.248}$
10	172879-0210	3-4, 6-7	$\frac{43.41}{1.709}$	$\frac{46.08}{1.814}$	$\frac{44.02}{1.733}$	$\frac{35.66}{1.404}$
11	172879-0211	3-4, 7-8	$\frac{47.35}{1.864}$	$\frac{50.04}{1.970}$	$\frac{48.01}{1.890}$	$\frac{39.62}{1.560}$
12	172879-0212	3-4, 8-9	$\frac{51.35}{2.022}$	$\frac{54.00}{2.126}$	$\frac{52.01}{2.048}$	$\frac{43.59}{1.716}$



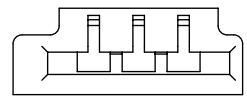
THIS DRAWING CONTAINS INFORMATION THAT IS PROPRIETARY TO MOLEX ELECTRONIC TECHNOLOGIES, LLC AND SHOULD NOT BE USED WITHOUT WRITTEN PERMISSION

QUALITY SYMBOLS ▽ = 0 ▽ = 0 ▽ = 0 ▼ = 0 ▽ = 0 ⊠ = 0 ■ = 0 ▽ = 0	ADD SLOT NOTE EC NO: 101899 DRWN: MKIPPER CHK'D: JBELL APPR: FSMITH	GENERAL TOLERANCES (UNLESS SPECIFIED) ANGULAR TOL ± ° 4 PLACES ± 3 PLACES ± 2 PLACES ± 0.25 1 PLACE ± 0.38 0 PLACES ± DRAFT WHERE APPLICABLE MUST REMAIN WITHIN DIMENSIONS	DIMENSION UNITS MM/IN		SCALE 3:1			
			DRWN BY: MKIPPER		DATE: 2015/02/10			EGDEMATE 3.96/.156 GLOW WIRE HOUSING WITHOUT HOOKS
			CHK'D BY: JBELL		DATE: 2015/02/10			
			APPR BY: FSMITH		DATE: 2015/06/15			
PRODUCT CUSTOMER DRAWING		SERIES: 172879	MATERIAL NUMBER: SEE CHART	CUSTOMER: GENERAL MARKET				
RELEASE STATUS P1		RELEASE DATE 05.02.2016 22:23:33		DOCUMENT NUMBER SD-172879-0000		DOC TYPE PSD	DOC PART 000	SHEET NUMBER 1 OF 2

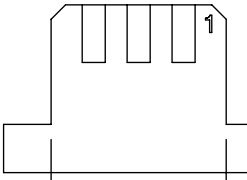
MODEL: TM-172159-0000

RELEASE STATUS P1 RELEASE DATE 05.02.2016 22:23:33

172879-0003



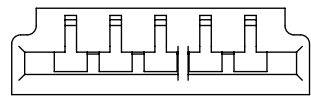
3 2 1 CIRCUITS



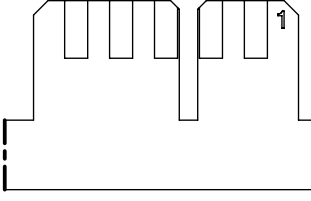
4.19
.165
MIN. THIS SIDE
ONLY ON 3 CKT

2.79
.110
MAX.
3 CKT ONLY
SEE NOTE 7

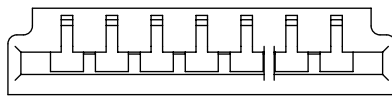
172879-0205



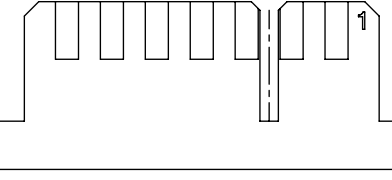
5 4 3 2 1 CIRCUITS



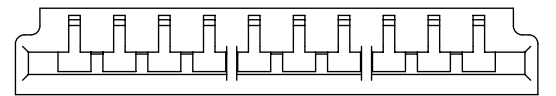
172879-0207



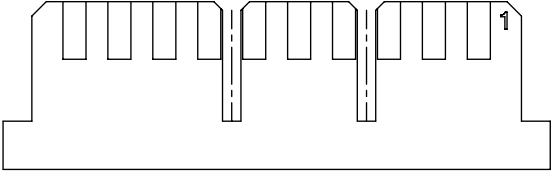
7 6 5 4 3 2 1 CIRCUITS



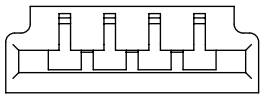
172879-0210



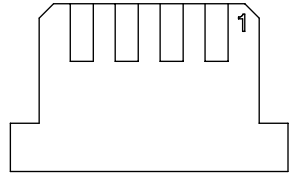
10 9 8 7 6 5 4 3 2 1 CIRCUITS



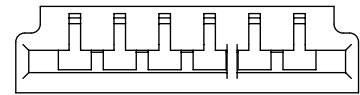
172879-0004



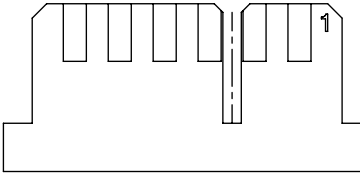
4 3 2 1 CIRCUITS



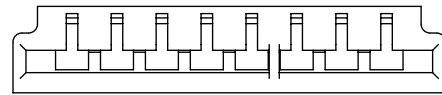
172879-0206



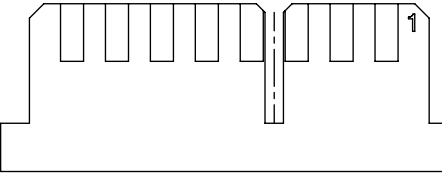
6 5 4 3 2 1 CIRCUITS



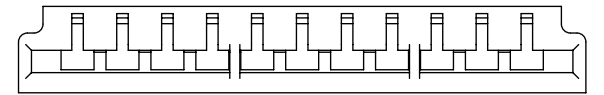
172879-0208



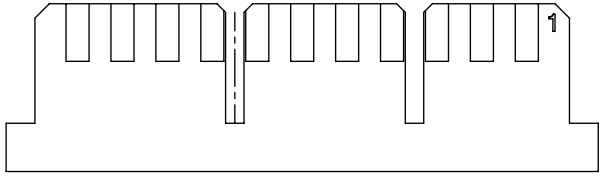
8 7 6 5 4 3 2 1 CIRCUITS



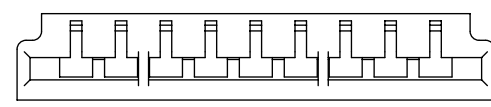
172879-0211



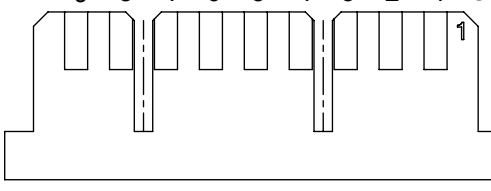
11 10 9 8 7 6 5 4 3 2 1 CIRCUITS



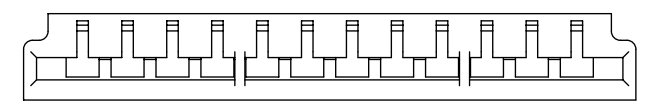
172879-0209



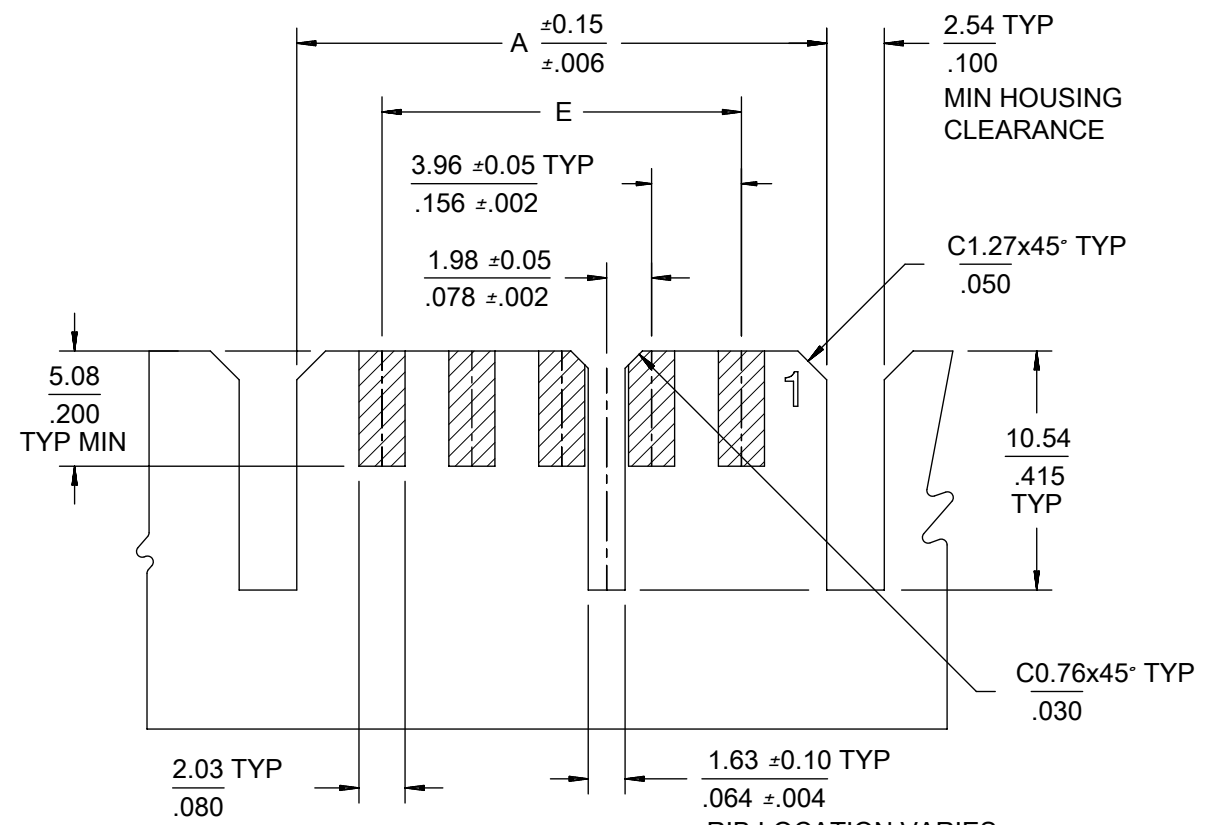
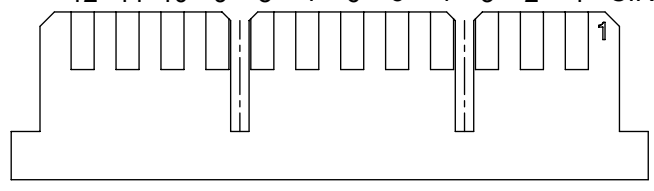
9 8 7 6 5 4 3 2 1 CIRCUITS



172879-0212



12 11 10 9 8 7 6 5 4 3 2 1 CIRCUITS



GENERIC PCB LAYOUT
PCB THICKNESS: 1.57/.062

RIB LOCATION VARIES
BY CKT SIZE SEE
CHART FOR LOCATION

THIS DRAWING CONTAINS INFORMATION THAT IS PROPRIETARY TO MOLEX ELECTRONIC TECHNOLOGIES, LLC AND SHOULD NOT BE USED WITHOUT WRITTEN PERMISSION

QUALITY SYMBOLS	ADD SLOT NOTE	EC NO: 101899 DRWN: MKIPPER CHKD: JBELL APPR: FSMITH	GENERAL TOLERANCES (UNLESS SPECIFIED)		DIMENSION UNITS	SCALE
			ANGULAR TOL ± °		MM/IN	1.5:1
▽ = 0			4 PLACES ±	DRWN BY	DATE	
▽ = 0			3 PLACES ±	MKIPPER	2015/02/10	
▽ = 0			2 PLACES ± 0.25	CHK'D BY	DATE	
▽ = 0			1 PLACE ± 0.38	JBELL	2015/02/10	
▽ = 0			0 PLACES ±	APPR BY	DATE	
▽ = 0			DRAFT WHERE APPLICABLE MUST REMAIN WITHIN DIMENSIONS	FSMITH	2015/06/15	
▽ = 0				DRAWING SIZE	THIRD ANGLE PROJECTION	
				B		

molex		
EGDEMATE 3.96/.156 GLOW WIRE HOUSING WITHOUT HOOKS		
PRODUCT CUSTOMER DRAWING		
SERIES	MATERIAL NUMBER	CUSTOMER
172879	SEE CHART	GENERAL MARKET
DOCUMENT NUMBER	DOC TYPE	DOC PART
SD-172879-0000	PSD	000
SHEET NUMBER		
2 OF 2		